



## LG 34WQ60C-B LED LCD Monitor Instruction Manual

[Home](#) » [LG](#) » LG 34WQ60C-B LED LCD Monitor Instruction Manual 



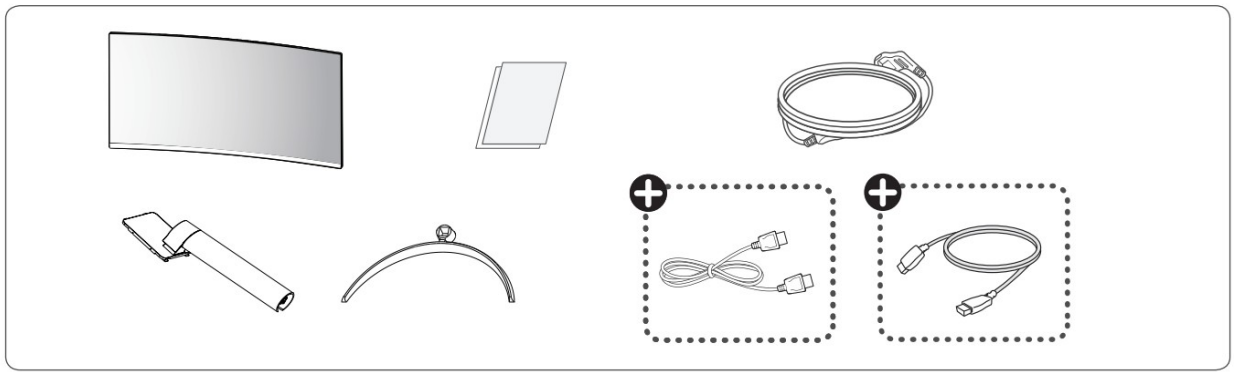
### Contents

- [1 34WQ60C-B LED LCD Monitor](#)
- [2 Documents / Resources](#)
  - [2.1 References](#)
- [3 Related Posts](#)

**34WQ60C-B LED LCD Monitor**



[www.lg.com](http://www.lg.com)



Depending on country



– For EPEAT (EPEAT applied model)

Spare parts are available for 5 years after the end of production.

Spare parts include base assembly, adapter and cables.

It may differ by model, you can get the more information by visiting to this website: <https://lgparts.com/>



### Quick Setup Guide

Please read this manual carefully before operating your set and retain it for future reference.

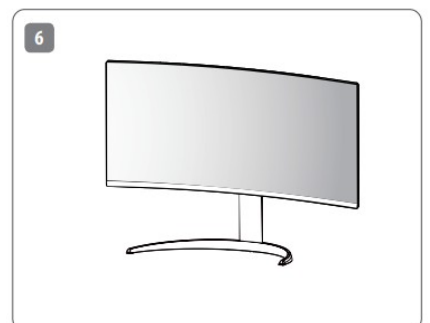
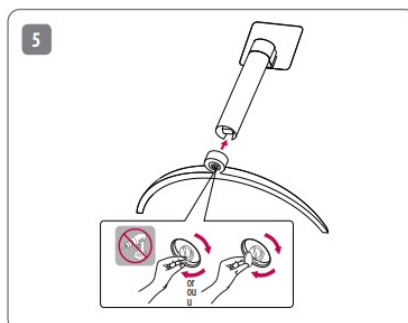
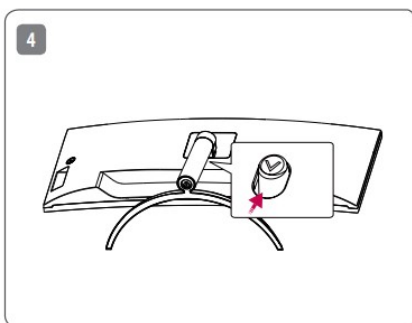
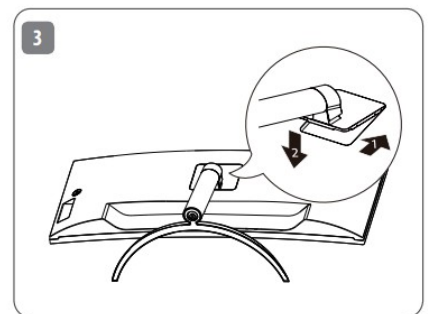
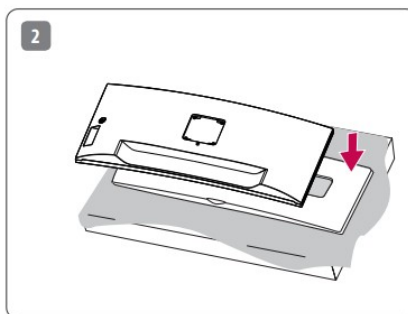
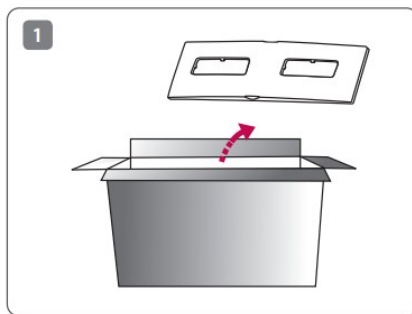
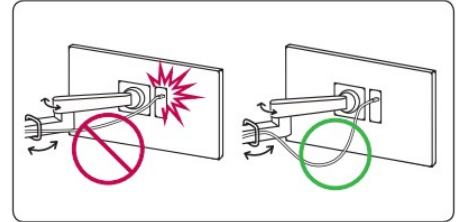
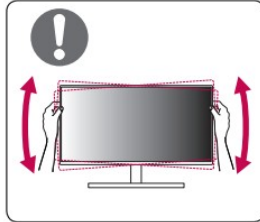
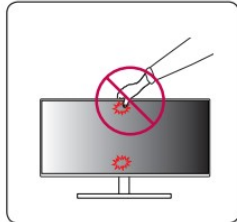


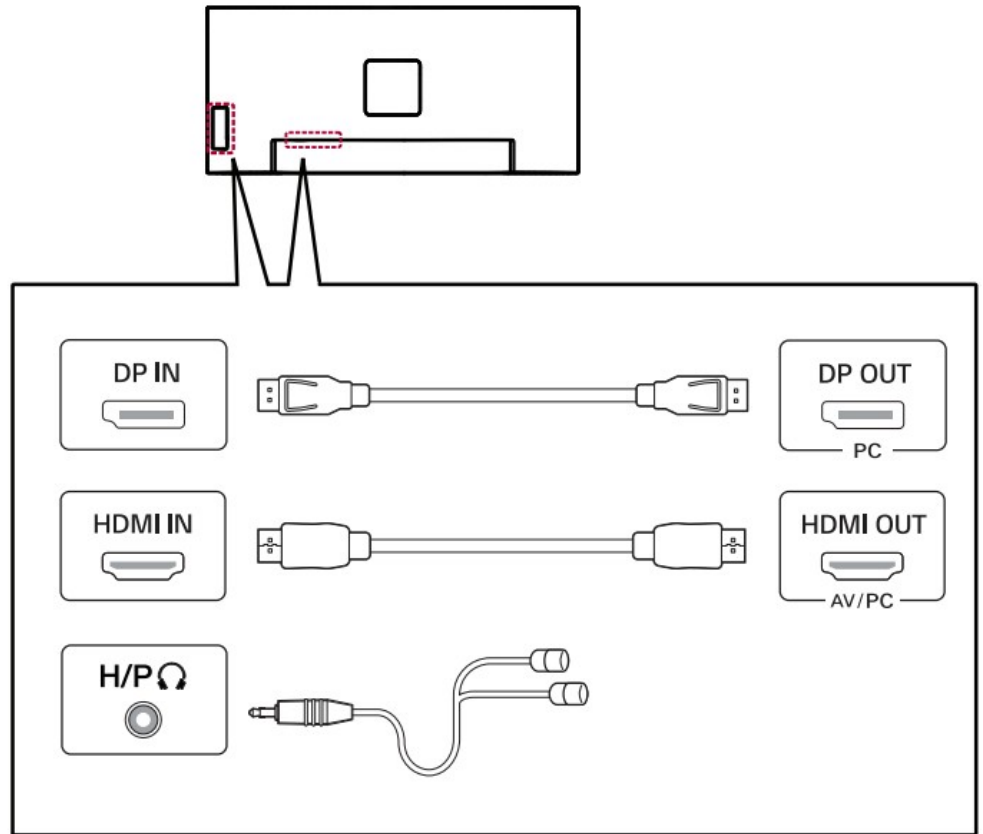
It is recommended that use the supplied components.



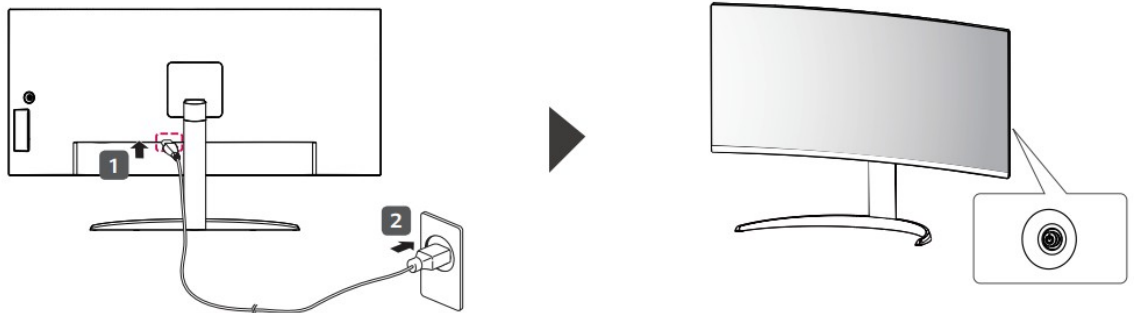
[www.lg.com](http://www.lg.com)

You can download manuals from the LGE website.





- Using a DVI to HDMI / DP (DisplayPort) to HDMI cable may cause compatibility issues.
- Make sure to use the supplied cable. Otherwise, this may cause the device to malfunction.



Dimensions (Width x Height x Depth)		Weight		Recommend Resolution	Vertical Frequency
With Stand	Without Stand	With Stand	Without Stand	3440 x 1440	HDMI 1.4: 50 Hz HDMI 2.0: 60 Hz DisplayPort: 60 Hz
816.7 x 484.6 x 223.3 (mm) 32.1 x 19.0 x 8.7 (inches)	816.7 x 364.4 x 83.6 (mm) 32.1 x 14.3 x 3.2 (inches)	6.9 kg 15.2(lbs)	5.9 kg 13.0(lbs)		



\* M B M 6 7 4 8 9 6 6 2 \*

(2208-REV01)

Printed in China





## Documents / Resources



[LG 34WQ60C-B LED LCD Monitor](#) [pdf] Instruction Manual  
34WQ60C-B LED LCD Monitor, 34WQ60C-B, LED LCD Monitor, LCD Monitor, Monitor

## References

-  [LG Electronics & Home Appliances | Shop Now | LG USA](#)
-  [LG Parts & Accessories](#)