



LG 32MP58HQ-P LED LCD Monitor Instruction Manual

[Home](#) » [LG](#) » LG 32MP58HQ-P LED LCD Monitor Instruction Manual 

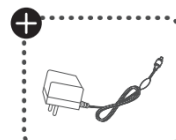
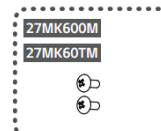
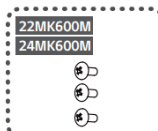
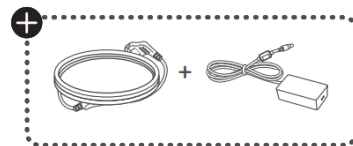
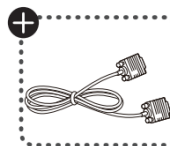
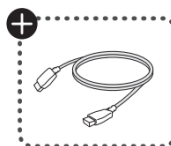


32MP58HQ-P LED LCD Monitor
Instruction Manual
LED LCD Monitor (LED Monitor)



www.lg.com

You can download manuals from the LGE website.



Contents

[1 32MP58HQ-P LED LCD Monitor](#)

[2 Documents / Resources](#)

[2.1 References](#)

[3 Related Posts](#)

32MP58HQ-P LED LCD Monitor

Depending on country

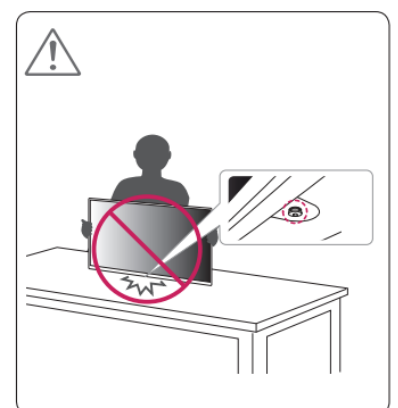
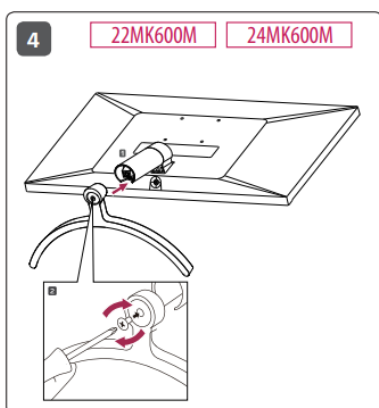
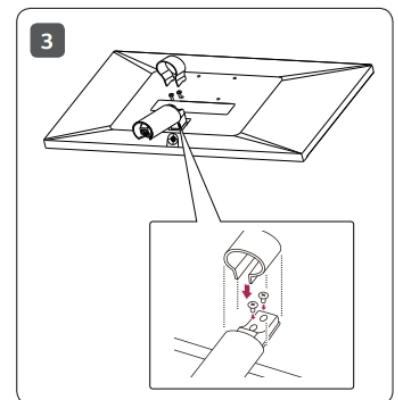
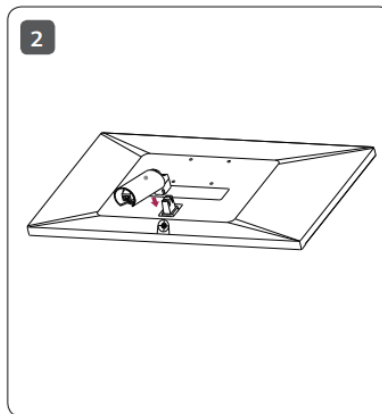
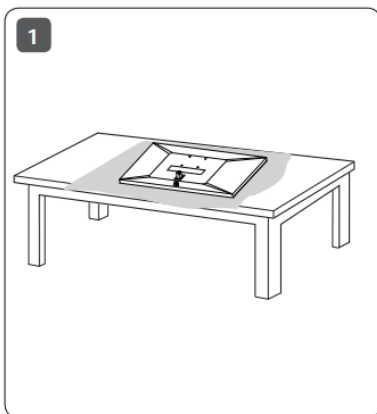


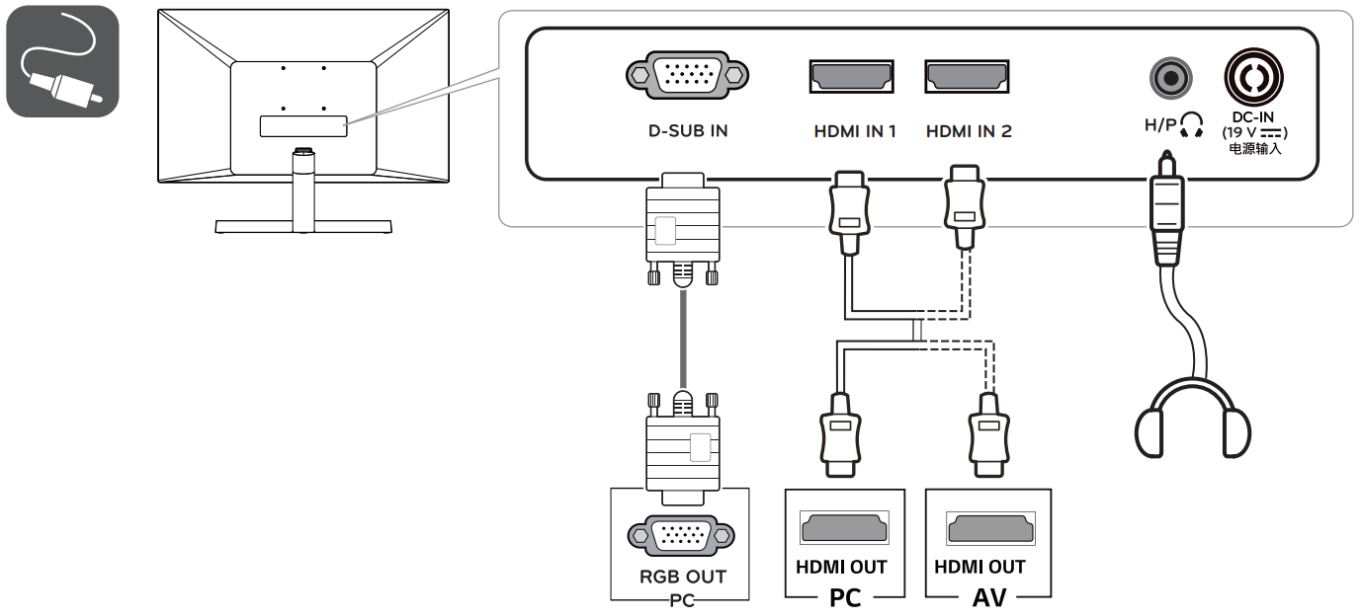
Quick Setup Guide

Please read this manual carefully before operating your set and retain it for future reference.

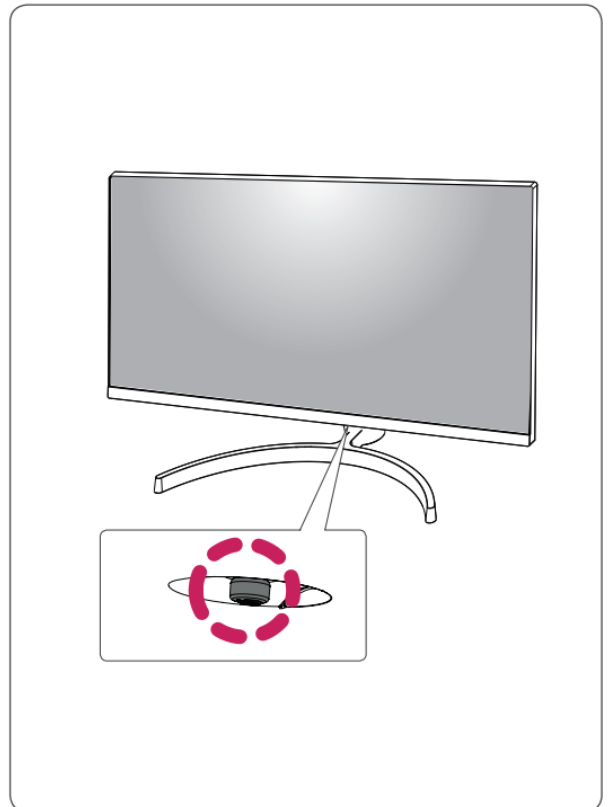
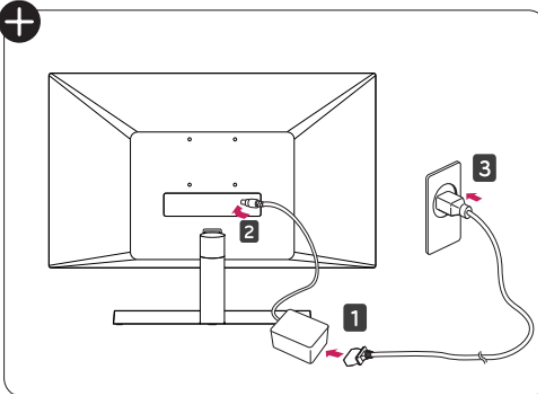
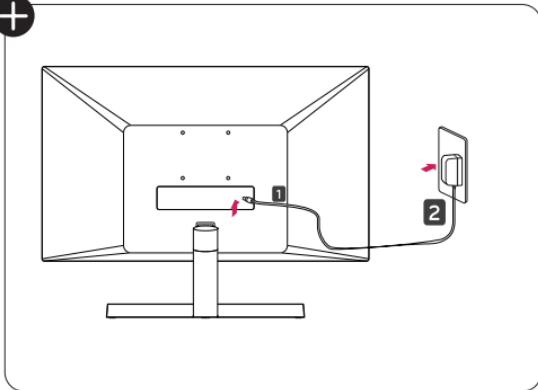


It is recommended that use the supplied components.





- Using a DVI to HDMI / DP (DisplayPort) to HDMI cable may cause compatibility issues.
- Make sure to use the supplied cable. Otherwise, this may cause the device to malfunction.



Dimensions (Width x Height x Depth)			Weight		Recommend Resolution
	With Stand	Without Stand	With Stand	Without Stand	1920 x 1080 @ 60 Hz
22MK600M	488.7 x 386.7 x 182.0 (mm) 19.2 x 15.2 x 7.1 (inches)	488.7 x 293.0 x 66.8 (mm) 19.2 x 11.5 x 2.6 (inches)	2.7 kg (5.9 lb)	2.3 kg (5.0 lb)	
24MK600M	539.1 x 415.3 x 182.0 (mm) 21.2 x 16.3 x 7.1 (inches)	539.1 x 321.5 x 66.5 (mm) 21.2 x 12.6 x 2.6 (inches)	3.5 kg (7.7 lb)	3.1 kg (6.8 lb)	
27MK600M 27MK60TM	611.2 x 453.9 x 209.4 (mm) 24.0 x 17.8 x 8.2 (inches)	611.2 x 362.6 x 72.7 (mm) 24.0 x 14.2 x 2.8 (inches)	4.8 kg (10.5 lb)	4.3 kg (9.4 lb)	



* M B M 6 6 1 8 5 4 3 2 *

(2008-REV04)

Printed in China

Documents / Resources

	<p>LG 32MP58HQ-P LED LCD Monitor [pdf] Instruction Manual</p> <p>32MP58HQ-P, LED LCD Monitor, 32MP58HQ-P LED LCD Monitor, LCD Monitor, Monitor</p>
--	--

References

-  [LG Electronics & Home Appliances](#) | [Shop Now](#) | [LG USA](#)

Manuals+.