



LG 32GP750 LED Computer Monitor User Manual

[Home](#) » [LG](#) » LG 32GP750 LED Computer Monitor User Manual 



32GP750 LED Computer Monitor User Manual

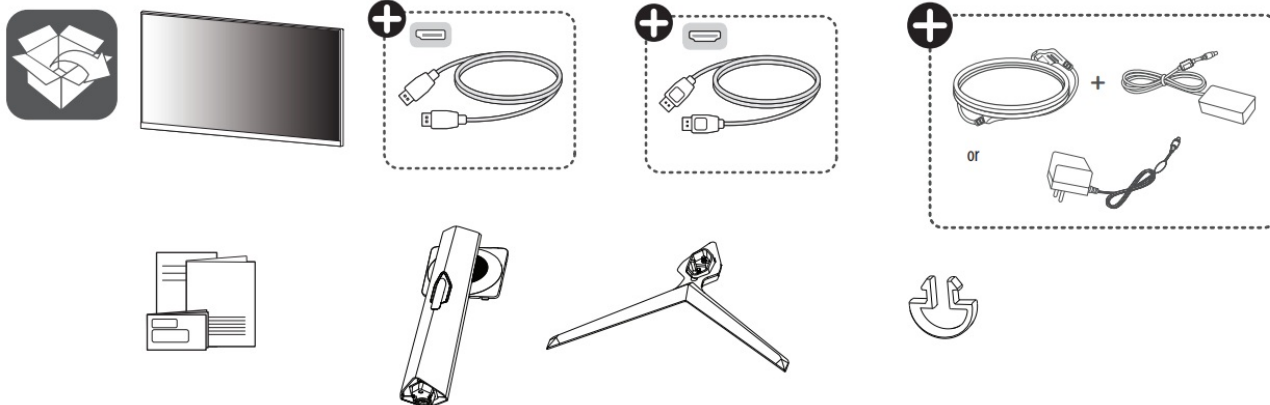
Contents

- [1 32GP750 LED Computer Monitor](#)
- [2 Documents / Resources](#)
 - [2.1 References](#)
- [3 Related Posts](#)

32GP750 LED Computer Monitor



www.lg.com



Depending on country



You can download manuals from the LGE website.

OWNER'S MANUAL AND REGULATORY INFO. are available at

<https://www.lg.com/au/support/manuals>.

PLEASE READ SAFETY INFORMATION BEFORE INSTALLATION AND USE. SCAN QR CODE TO ACCESS.



<https://www.lg.com/au/support/manuals>



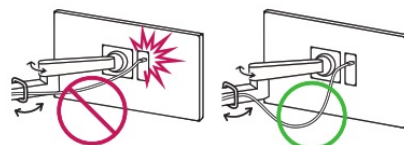
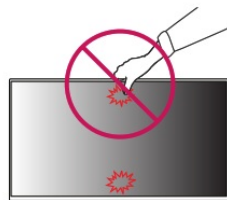
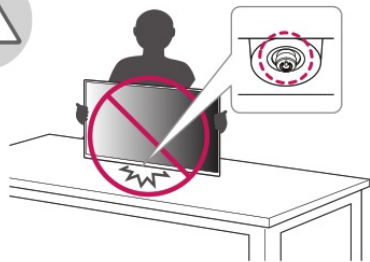
* M B M 6 7 5 1 3 6 0 5 *

(2212-REV00)

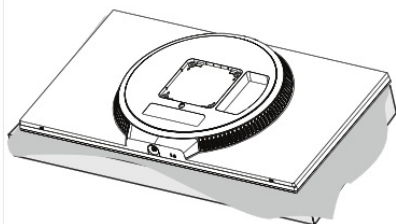
MBM67513605REV00



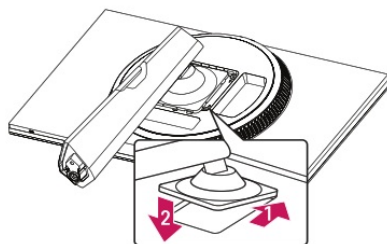
It is recommended that use the supplied components.



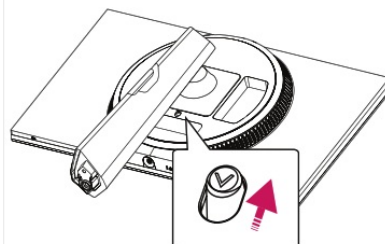
1



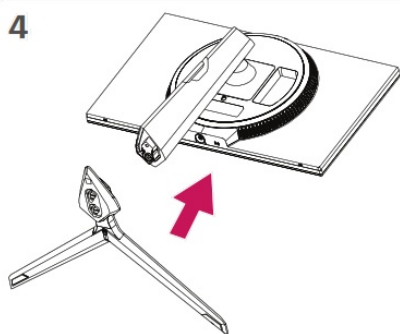
2



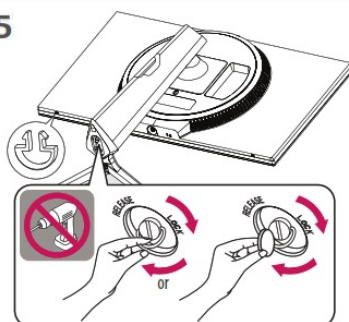
3



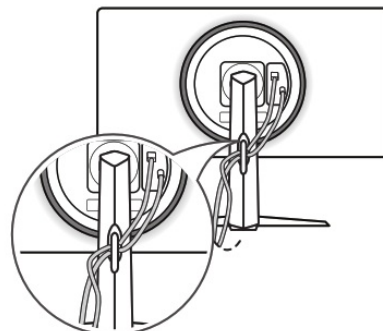
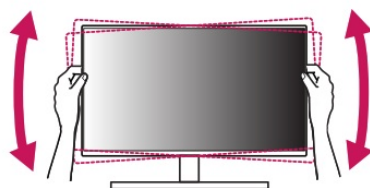
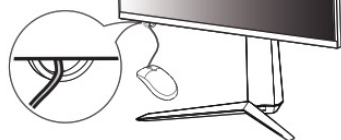
4

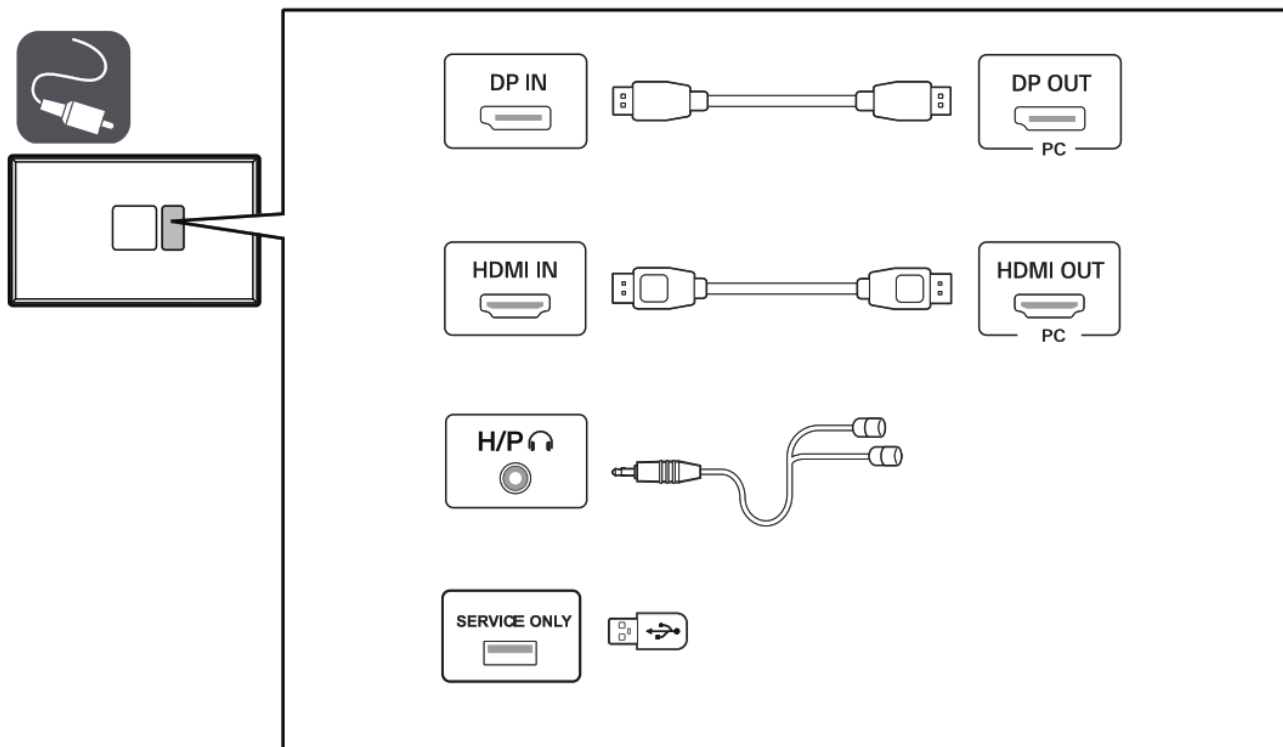



5

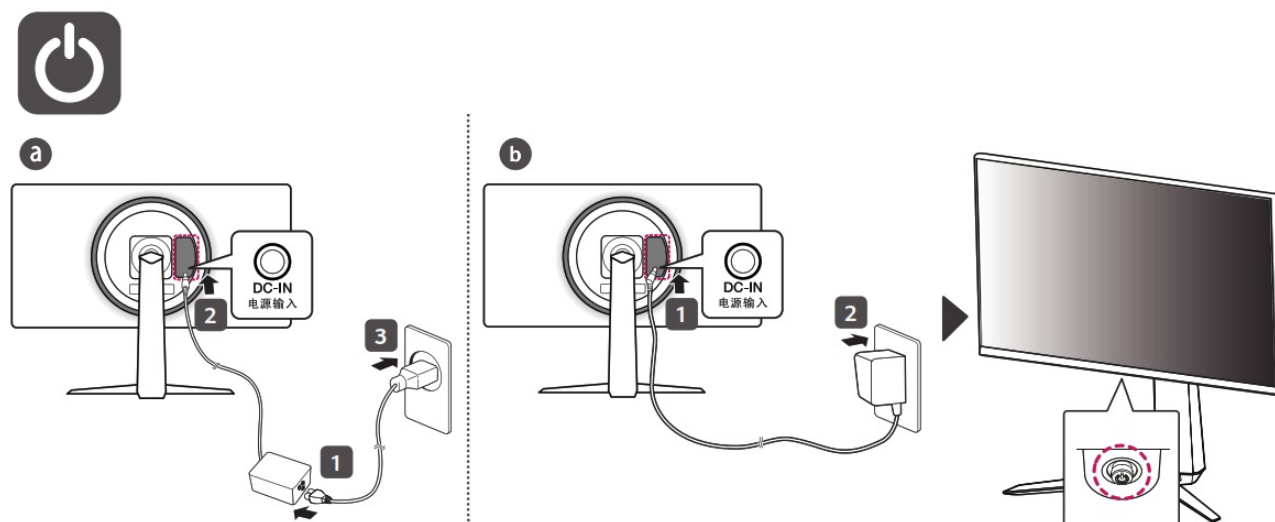


6








-  Using a DVI to HDMI/DP (DisplayPort) to HDMI cable may cause compatibility issues.
- Make sure to use the supplied cable. Otherwise, this may cause the device to malfunction.



Documents / Resources

	<p>LG 32GP750 LED Computer Monitor [pdf] User Manual</p> <p>32GP750 LED Computer Monitor, 32GP750, LED Computer Monitor, Computer Monitor, Monitor</p>
---	--

References

-  [LG Electronics & Home Appliances | Shop Now | LG USA](#)
-  [LG Manuals, Instructions & User Guides | LG Australia](#)