



LG 22MP44B LED LCD Monitor User Manual

[Home](#) » [LG](#) » LG 22MP44B LED LCD Monitor User Manual



LED LCD Monitor (LED Monitor)



www.lg.com

22BP410

22MP44B

22MP41W 24MP44B 27MP40W 27MP400 27MP40A 24MP400 24MP40A 22MP410 22MP400

Contents [[hide](#)]

[1 22MP44B LED LCD Monitor](#)

[2 Depending on country](#)

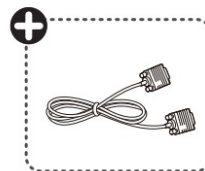
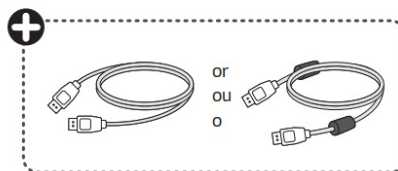
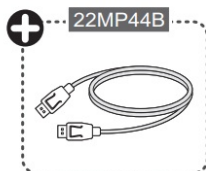
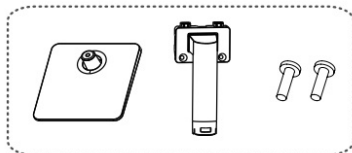
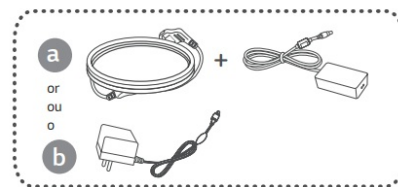
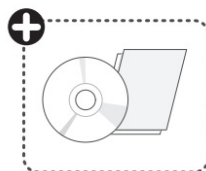
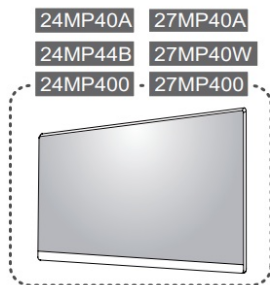
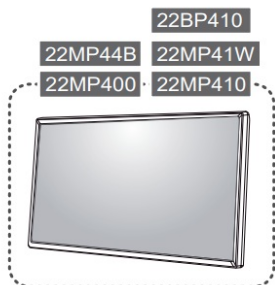
[3 Documents / Resources](#)

[3.1 References](#)

[4 Related Posts](#)

22MP44B LED LCD Monitor





Depending on country

- For EPEAT (EPEAT applied model) Spare parts are available for 5 years after the end of production. Spare parts include base assembly, adapter and cables. It may differ by model, you can get the more information by visiting to this website: <https://aparts.com/>



Quick Setup Guide

Please read this manual carefully before operating your set and retain it for future reference.



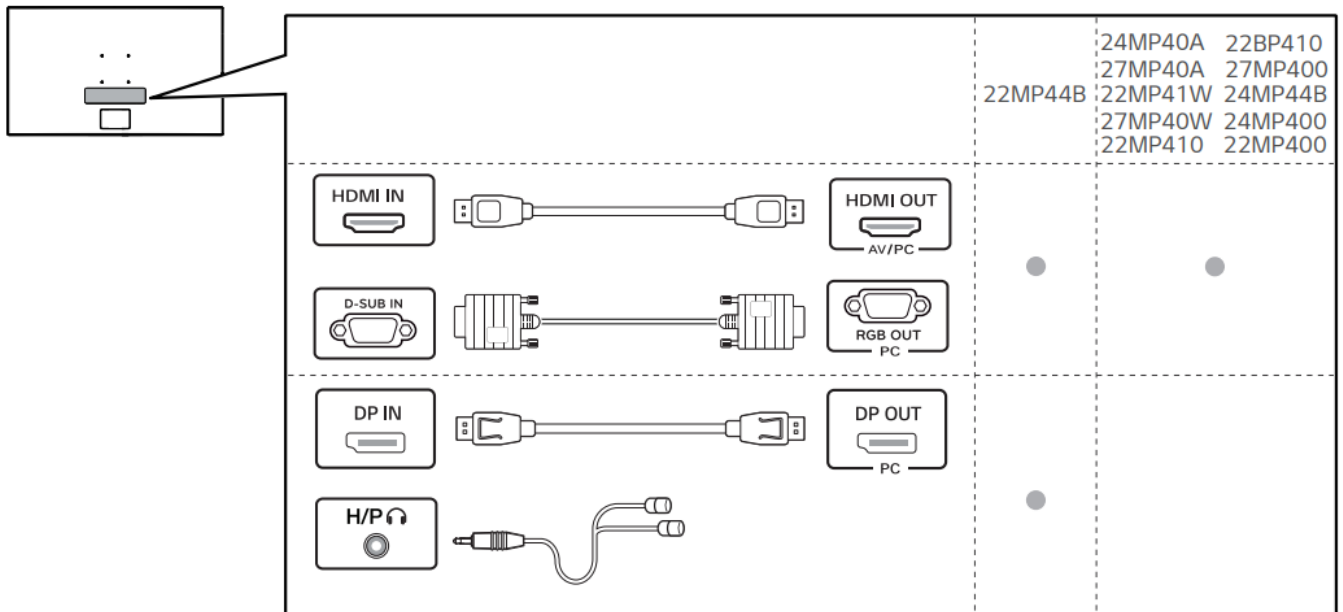
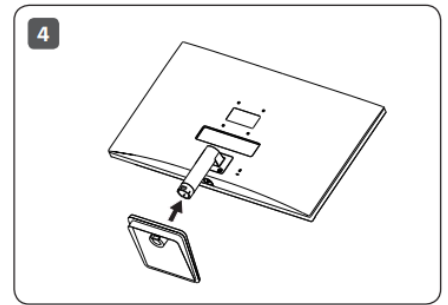
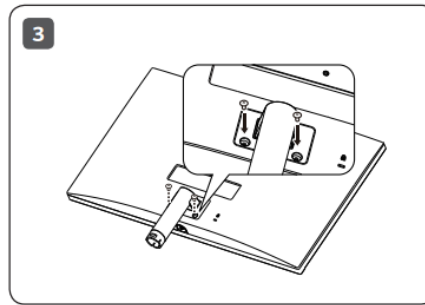
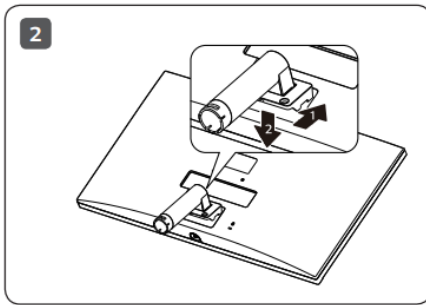
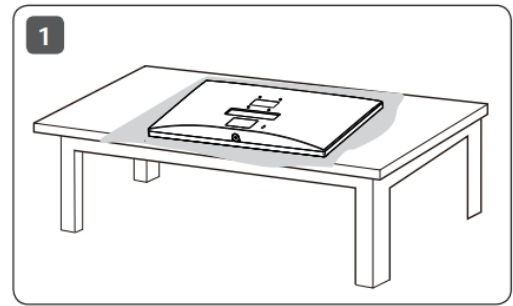
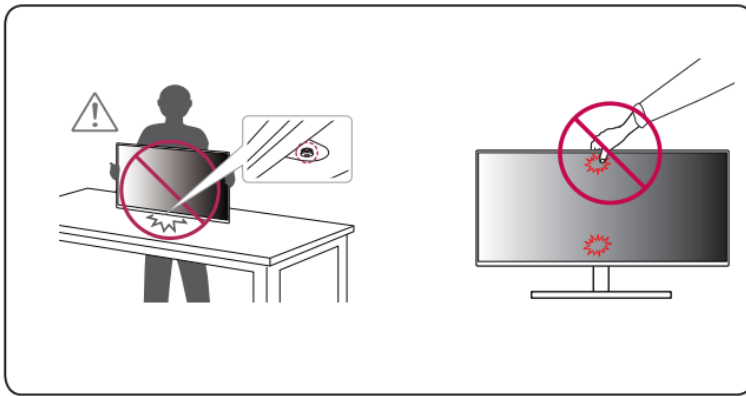
It is recommended that use the supplied components.



www.lg.com

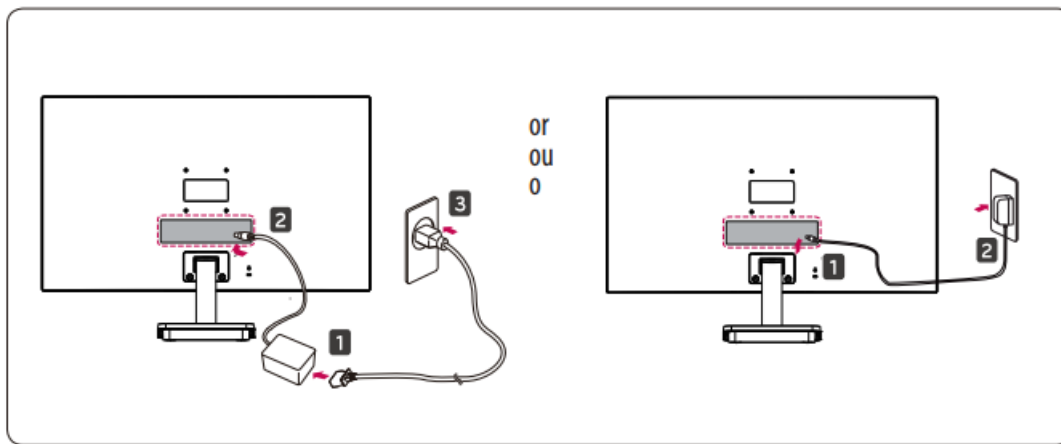
You can download manuals from the LGE website.



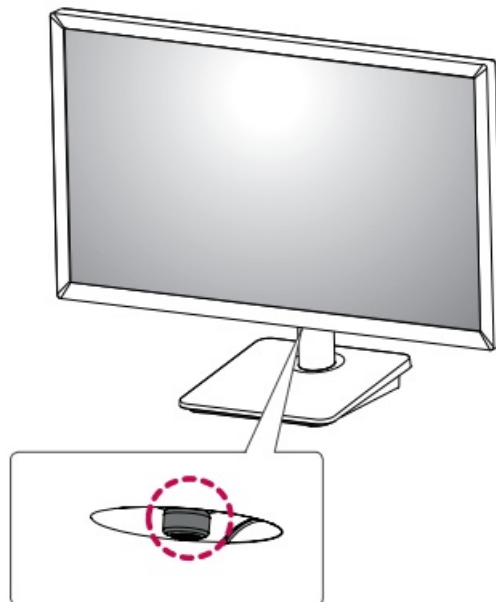


- Using a DVI to HDMI / DP (DisplayPort) to HDMI cable may cause compatibility issues.
- Make sure to use the supplied cable. Otherwise, this may cause the device to malfunction.

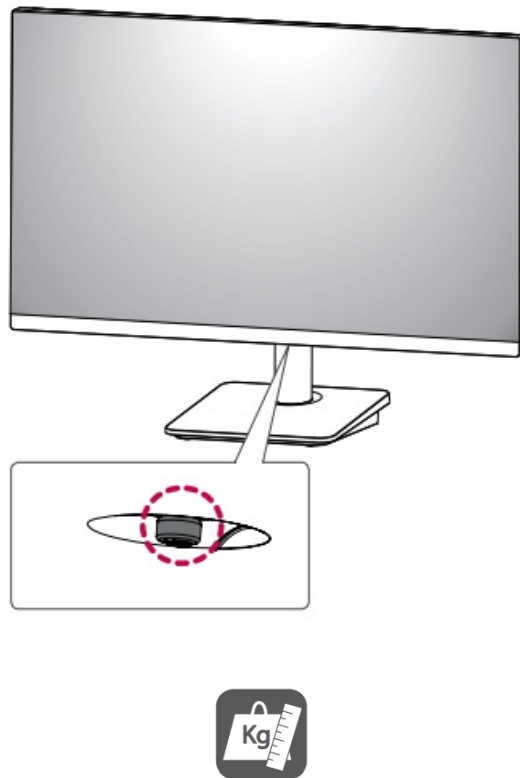




22BP410
22MP44B
22MP400
22MP410
22MP41W



24MP400
24MP44B
27MP400
27MP40W
24MP40A
27MP40A



English	Dimensions (Width x Height x Depth)			Weight		Recommend Resolution	Vertical Frequency
		With Stand	Without Stand	With Stand	Without Stand		
	22MP400	509.6 x 393.2 x 190.0 (mm) 20.0 x 15.4 x 7.4 (inches)	509.6 x 304.6 x 58.0 (mm) 20.0 x 11.9 x 2.2 (inches)	2.4 kg 5.2(lbs)	2.1 kg 4.6(lbs)		
	22MP410 22BP410 22MP41W	511.6 x 383.5 x 190.0 (mm) 20.1 x 15.0 x 7.4 (inches)	511.6 x 295.0 x 40.2 (mm) 20.1 x 11.6 x 1.5 (inches)	2.6 kg 5.7(lbs)	2.2 kg 4.8(lbs)		
	24MP400 24MP40A 24MP44B	539.9 x 414.4 x 190.0 (mm) 21.2 x 16.3 x 7.4 (inches)	539.9 x 321.4 x 56.2 (mm) 21.2 x 12.6 x 2.2 (inches)	2.6 kg 5.7(lbs)	2.3 kg 5.0(lbs)		
	27MP400 27MP40A 27MP40W	612.0 x 454.9 x 190.0 (mm) 24.0 x 17.9 x 7.4 (inches)	612.0 x 362.5 x 56.2 (mm) 24.0 x 14.2 x 2.2 (inches)	3.4 kg 7.4(lbs)	3.1 kg 6.8(lbs)		




English	Dimensions (Width x Height x Depth)			Weight		Recommend Resolution	Vertical Frequency
		With Stand	Without Stand	With Stand	Without Stand		
	22MP44B	511.6 x 383.5 x 190.0 (mm) 20.1 x 15.0 x 7.4 (inches)	511.6 x 295.0 x 40.2 (mm) 20.1 x 11.6 x 1.5 (inches)	2.5 kg 5.5(lbs)	2.1 kg 4.6(lbs)		



Documents / Resources

	LG 22MP44B LED LCD Monitor [pdf] User Manual 22MP44B, 27MP40A, 22MP41W, 24MP44B, 27MP400, 24MP400, 27MP40W, 24MP40A, 22MP410, 22BP410, 22MP400, 22MP44B LED LCD Monitor, 22MP44B, LED LCD Monitor, LCD Monitor, Monitor
--	---

References

-  [LG Parts & Accessories](#)
-  [LG Electronics & Home Appliances | Shop Now | LG USA](#)
-  [LG Parts & Accessories](#)