



LG 22MP400 LED LCD Monitor User Guide

[Home](#) » [LG](#) » LG 22MP400 LED LCD Monitor User Guide 

Contents

- [1 LG 22MP400 LED LCD Monitor](#)
- [2 WHATS IN THE BOX](#)
- [3 CONNECTIONS](#)
- [4 POWER BUTTON](#)
- [5 Documents / Resources](#)
 - [5.1 References](#)
- [6 Related Posts](#)



LG 22MP400 LED LCD Monitor

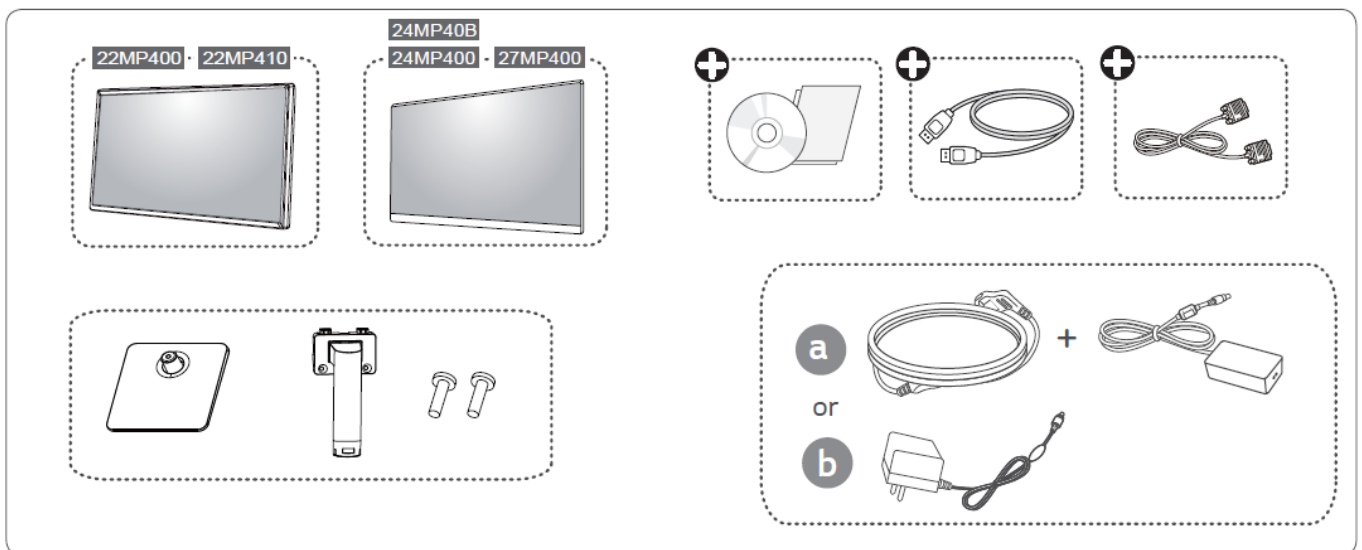


LED LCD Monitor (LED Monitor)

- 22MP400
- 24MP400
- 27MP400
- 22MP410
- 24MP40B

WHATS IN THE BOX

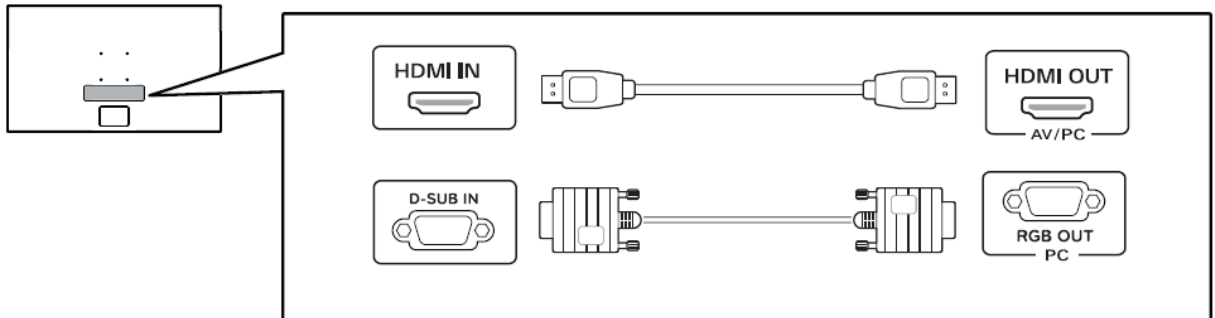
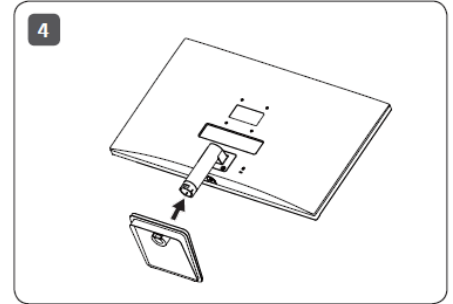
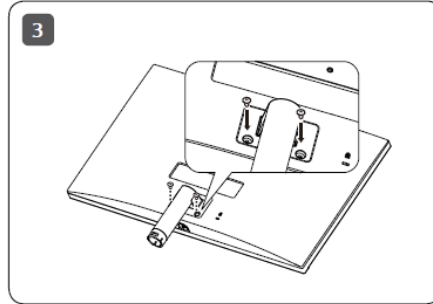
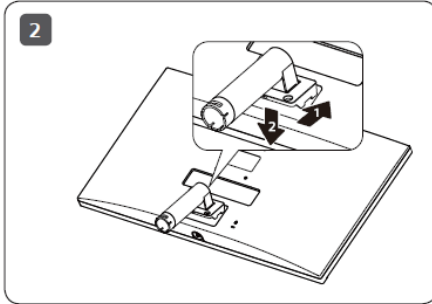
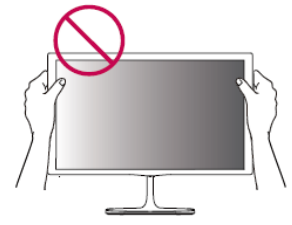
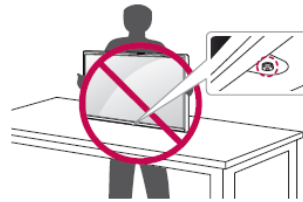
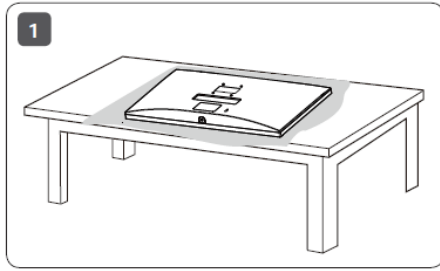
Depending on country



- It is recommended that use the supplied components
- You can download manuals from the LGE website

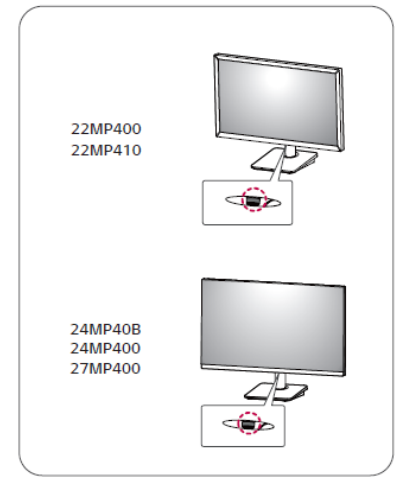
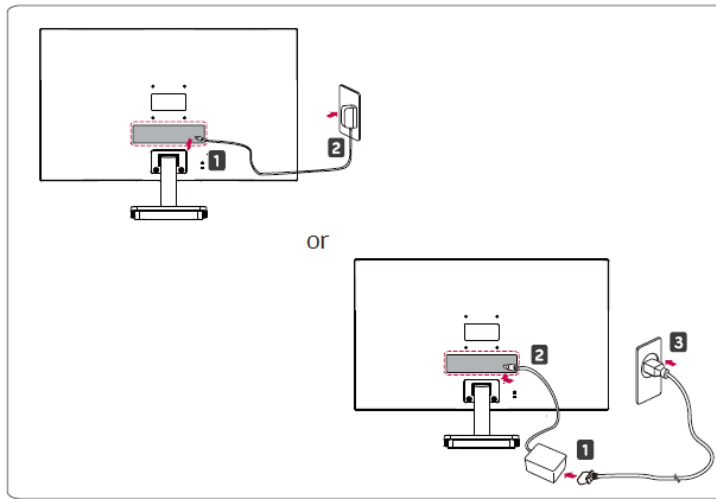
www.lg.com

CONNECTIONS



- Using a DVI to HDMI / DP (DisplayPort) to HDMI cable may cause compatibility issues.
- Make sure to use the supplied cable. Otherwise, this may cause the device to malfunction

POWER BUTTON



Documents / Resources

| | |
|--|--|
| | <p>LG 22MP400 LED LCD Monitor [pdf] User Guide 22MP400, 27MP400, 22MP410, 24MP40B, 22MP400 LED LCD Monitor, 22MP400, LED LCD Monitor, LCD Monitor, Monitor</p> |
|--|--|

References

- [LG Electronics & Home Appliances](#) | [Shop Now](#) | [LG USA](#)