



LG 22MN430H LED LCD Computer Monitor User Manual

[Home](#) » [LG](#) » LG 22MN430H LED LCD Computer Monitor User Manual 



Life's Good

**22MN430H LED LCD Computer Monitor
User Manual**

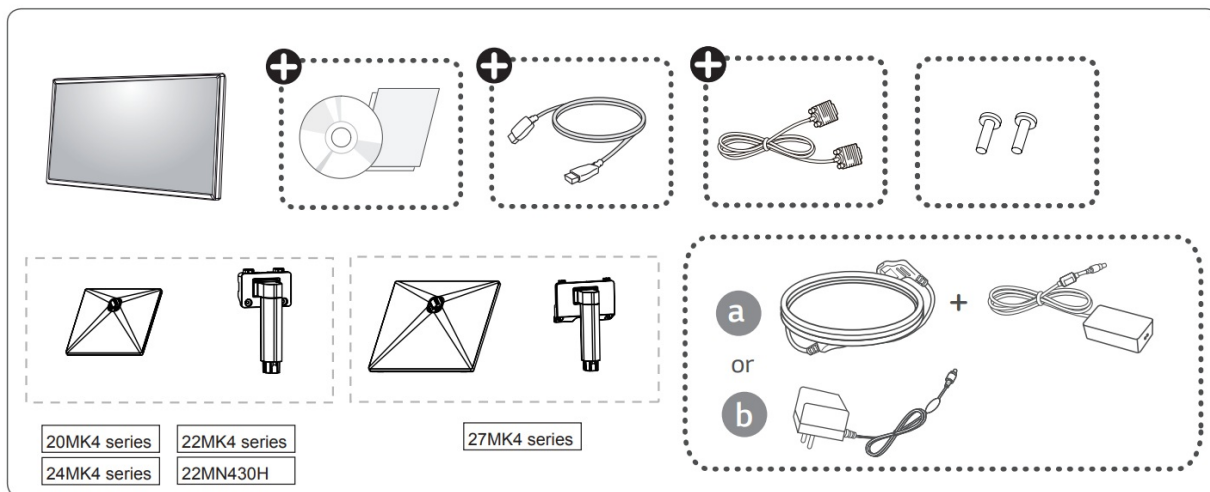
Contents

- [1 22MN430H LED LCD Computer Monitor](#)
- [2 Documents / Resources](#)
 - [2.1 References](#)
- [3 Related Posts](#)

22MN430H LED LCD Computer Monitor



www.lg.com



It is recommended that use the supplied components.

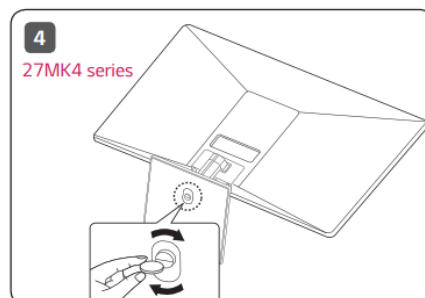
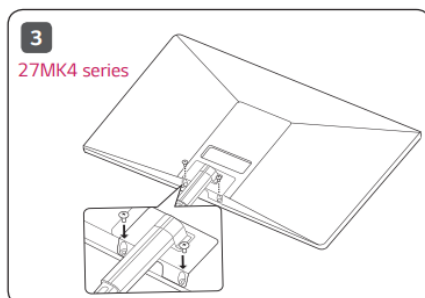
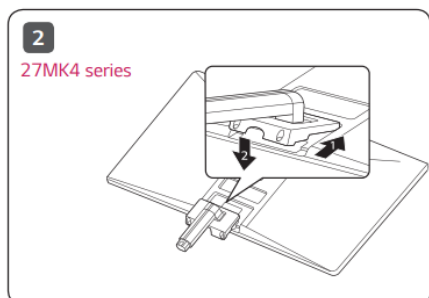
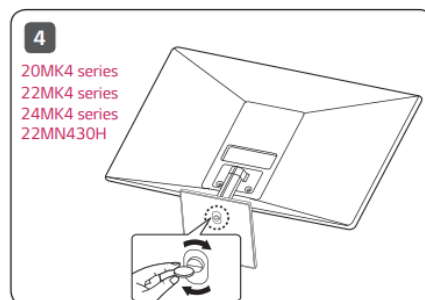
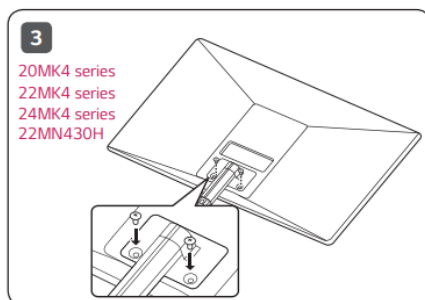
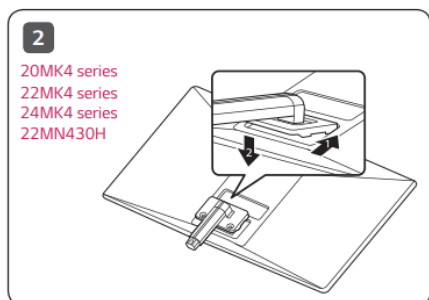
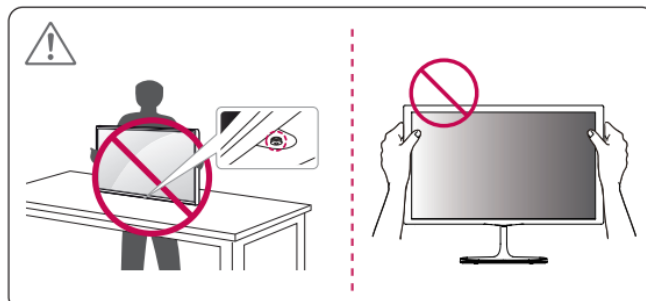
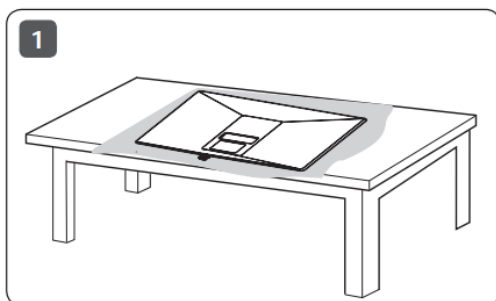
You can download manuals from the LGE website.

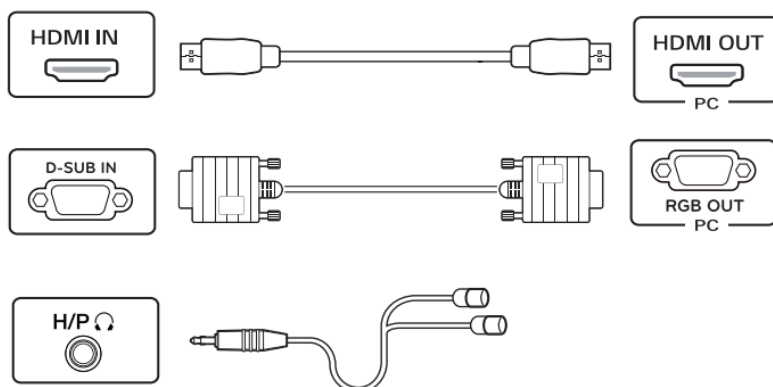
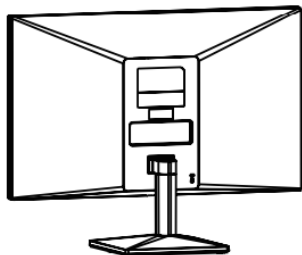
OWNER'S MANUAL AND REGULATORY INFO. are available at <https://www.lg.com/au/support/manuals>.

PLEASE READ SAFETY INFORMATION BEFORE INSTALLATION AND USE. SCAN QR CODE TO ACCESS

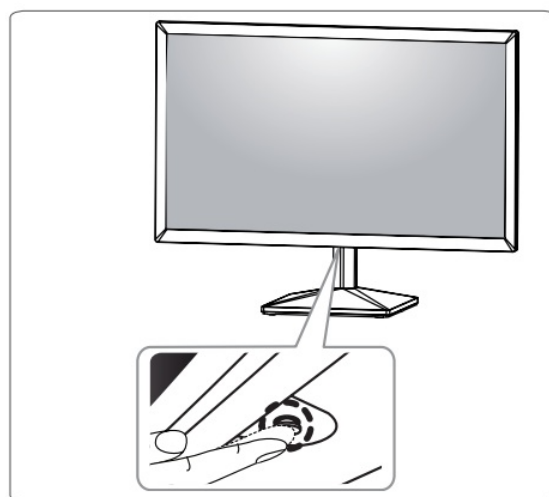
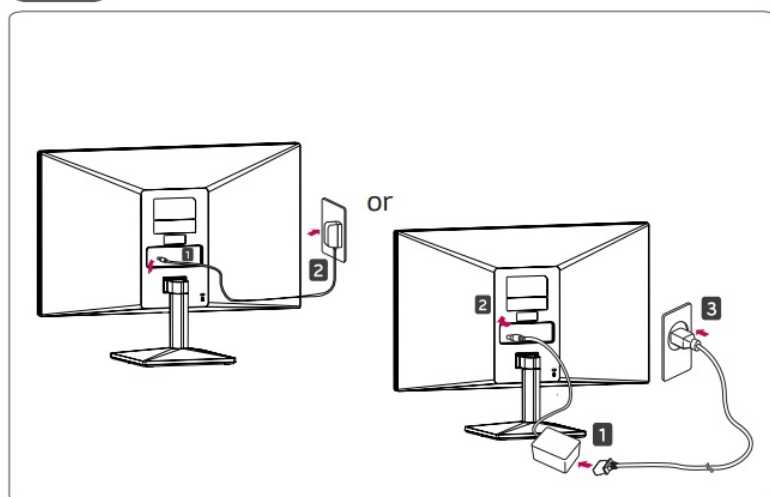


<https://www.lg.com/au/support/manuals>





- Using a DVI to HDMI / DP (DisplayPort) to HDMI cable may cause compatibility issues.
- Make sure to use the supplied cable. Otherwise, this may cause the device to malfunction.





* M B M 6 6 2 0 5 7 3 5 *

(1912-REV02)



[LG 22MN430H LED LCD Computer Monitor](#) [pdf] User Manual
22MN430H, MK4 series, 22MN430H LED LCD Computer Monitor, LED LCD Computer Monitor,
LCD Computer Monitor, Computer Monitor, Monitor

References

-  [LG Electronics & Home Appliances | Shop Now | LG USA](#)
-  [LG Manuals, Instructions & User Guides | LG Australia](#)

Manuals+.