



LG 22EA430V LED LCD Monitor User Manual

[Home](#) » [LG](#) » LG 22EA430V LED LCD Monitor User Manual 

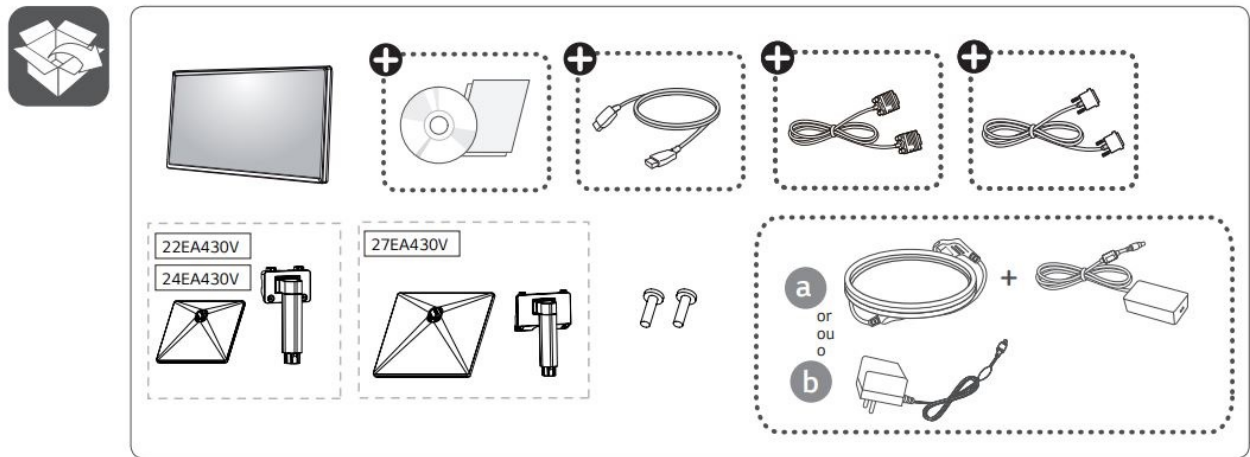
LG 22EA430V LED LCD Monitor User Manual



Easy Setup Guide
Please read this manual carefully before operating your set and retain it for future reference.

LED LCD Monitor (LED Monitor) /

22EA430V
24EA430V
27EA430V



 **English** Depending on country



www.lg.com



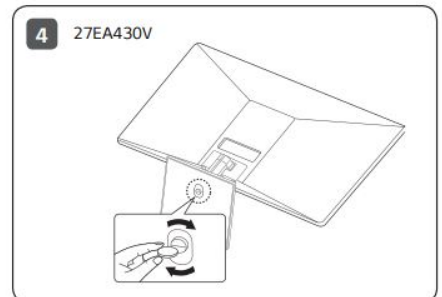
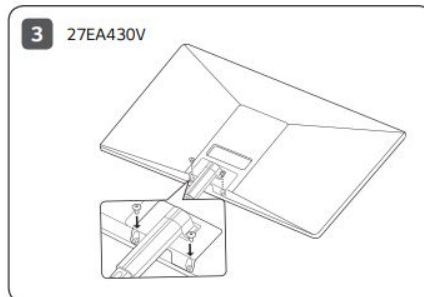
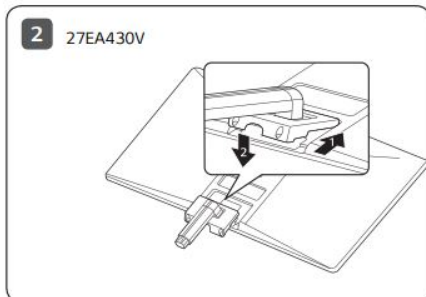
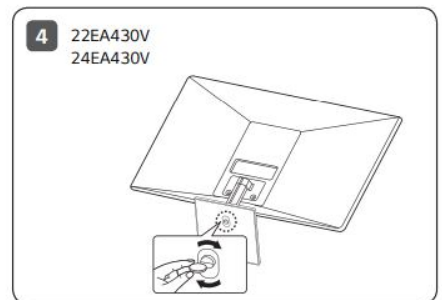
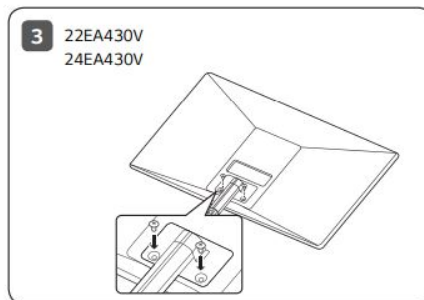
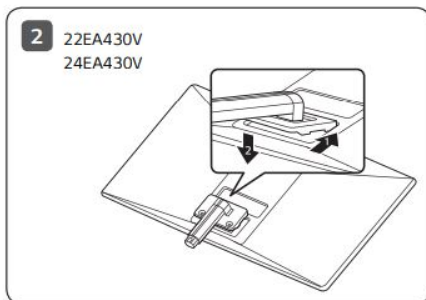
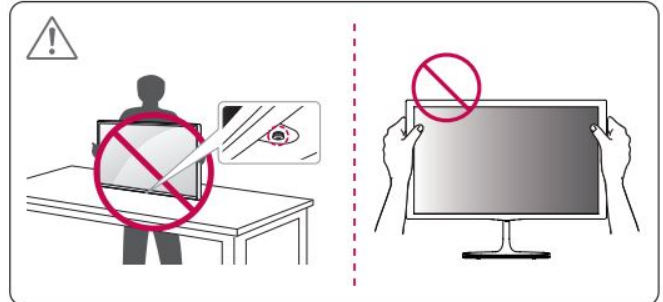
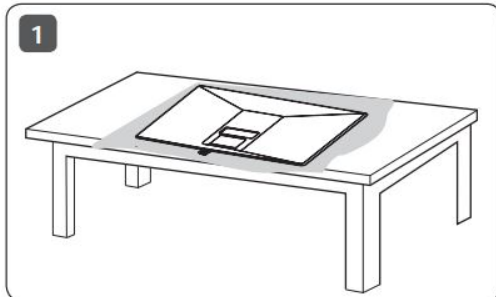
(2208-REV02)
Printed in China / Imprimé en Chine

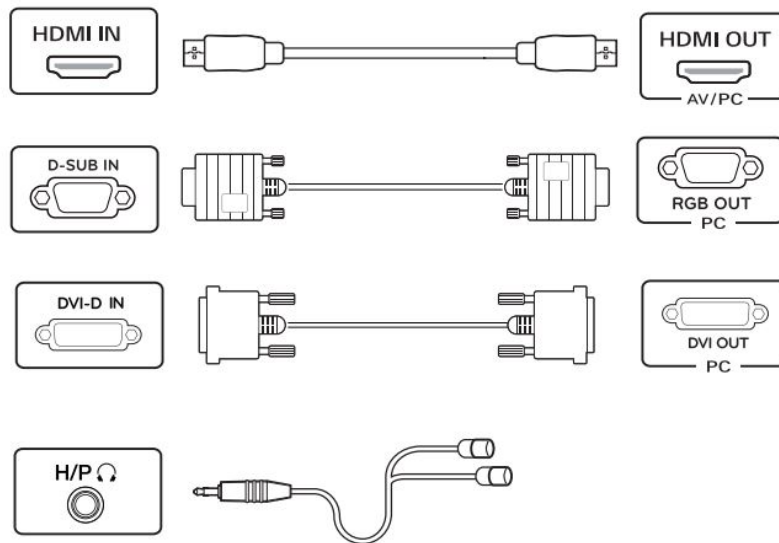
www.lg.com

It is recommended that use the supplied components.

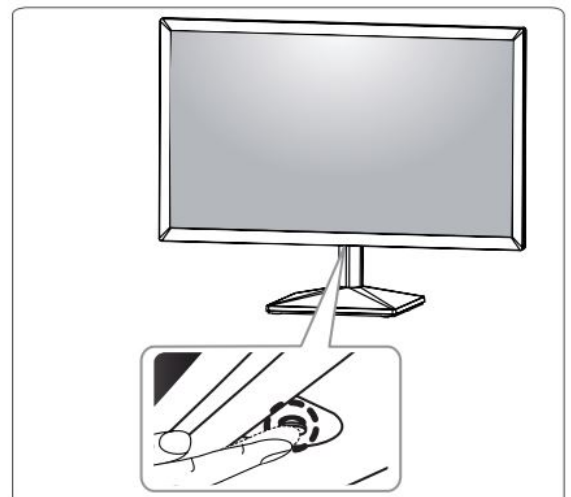
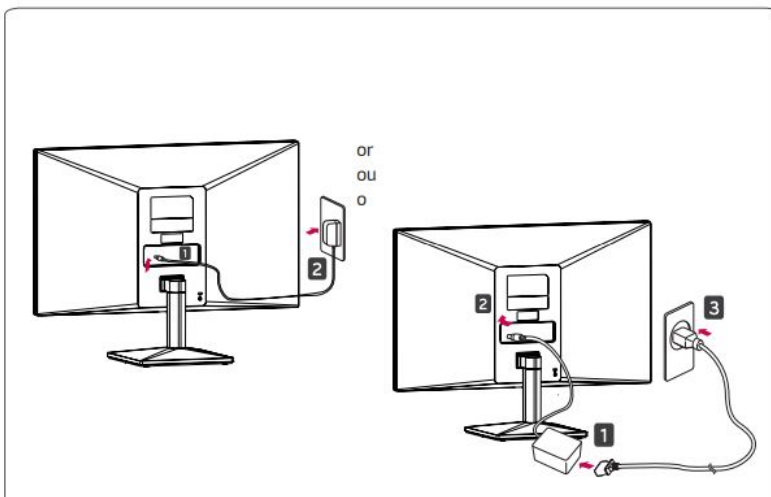
You Can download manuals from the LGE website.

– For EPEAT (EPEAT applied model) Spare parts are available for 5 years after the end of production. Spare parts include base assembly, adapter and cables. It may differ by model, you can get the more information by visiting to this website: <https://lgparts.com/>





- Using a DVI to HDMI / DP (DisplayPort) to HDMI cable may cause compatibility issues.
- Make sure to use the supplied cable. Otherwise, this may cause the device to malfunction.





English	Dimensions (Width x Height x Depth)			Weight		Recommend Resolution
		With Stand	Without Stand	With Stand	Without Stand	1920x1080 @ 60Hz
	22EA430V	509.6 x 395.8 x 181.9 (mm) 20.0 x 15.5 x 7.1 (inches)	509.6 x 305.7 x 38.5 (mm) 20.0 x 12.0 x 1.5 (inches)	2.8 kg (6.1 lbs)	2.5 kg (5.5 lbs)	
	24EA430V	555 x 421 x 181.9 (mm) 21.8 x 16.5 x 7.1 (inches)	555 x 330.9 x 38.4 (mm) 21.8 x 13.0 x 1.5 (inches)	3.1 kg (6.8 lbs)	2.8 kg (6.1 lbs)	
	27EA430V	625.6 x 468.7 x 204.1 (mm) 24.6 x 18.4 x 8.0 (inches)	625.6 x 375.2 x 44 (mm) 24.6 x 14.7 x 1.7 (inches)	4.0 kg (8.8 lbs)	3.6 kg (7.9 lbs)	
Français	Dimensions (largeur x hauteur x profondeur)			Poids		Résolution recommandée
		Socle inclus	Socle non inclus	Socle inclus	Socle non inclus	1 920x1 080 @ 60Hz
	22EA430V	509,6 x 395,8 x 181,9 (mm) 20,0 x 15,5 x 7,1 (po)	509,6 x 305,7 x 38,5 (mm) 20,0 x 12,0 x 1,5 (po)	2,8 kg (6,1 lb)	2,5 kg (5,5 lb)	
	24EA430V	555 x 421 x 181,9 (mm) 21,8 x 16,5 x 7,1 (po)	555 x 330,9 x 38,4 (mm) 21,8 x 13,0 x 1,5 (po)	3,1 kg (6,8 lb)	2,8 kg (6,1 lb)	
	27EA430V	625,6 x 468,7 x 204,1 (mm) 24,6 x 18,4 x 8,0 (po)	625,6 x 375,2 x 44 (mm) 24,6 x 14,7 x 1,7 (po)	4,0 kg (8,8 lb)	3,6 kg (7,9 lb)	
Español	Dimensiones (ancho x alto x profundo)			Peso		Resolución recomendada
		Pie incluido	Pie no incluido	Pie incluido	Pie no incluido	1 920x1 080 píxeles 60Hz
	22EA430V	509,6 x 395,8 x 181,9 (mm)	509,6 x 305,7 x 38,5 (mm)	2,8 kg	2,5 kg	
	24EA430V	555 x 421 x 181,9 (mm)	555 x 330,9 x 38,4 (mm)	3,1 kg	2,8 kg	
	27EA430V	625,6 x 468,7 x 204,1 (mm)	625,6 x 375,2 x 44 (mm)	4,0 kg	3,6 kg	
	Potencia requerida		19 V ~~~ 1,3 A			
	Especificaciones de Adaptador de ca/cc		Salida	19 V ~~~ 1,3 A		
			Entrada	100-240 V - 50/60 Hz 1,0 A 100-127 V - 60 Hz 0,7 A 100-240 V - 50/60 Hz 1,1 A 100-127 V - 50/60 Hz 1,1 A 100-240 V - 50/60 Hz 0,7 A		

Contents

- 1 Documents / Resources
 - 1.1 References
- 2 Related Posts

Documents / Resources



[LG 22EA430V LED LCD Monitor](#) [pdf] User Manual
22EA430V LED LCD Monitor, 22EA430V, LED LCD Monitor, LCD Monitor, Monitor

References

- [LG Electronics & Home Appliances | Shop Now | LG USA](#)
- [LG Parts & Accessories](#)