



# HP MP 100 Mobile Projector User Manual

[Home](#) » [HP](#) » HP MP 100 Mobile Projector User Manual 

## HP MP 100 Mobile Projector User Manual



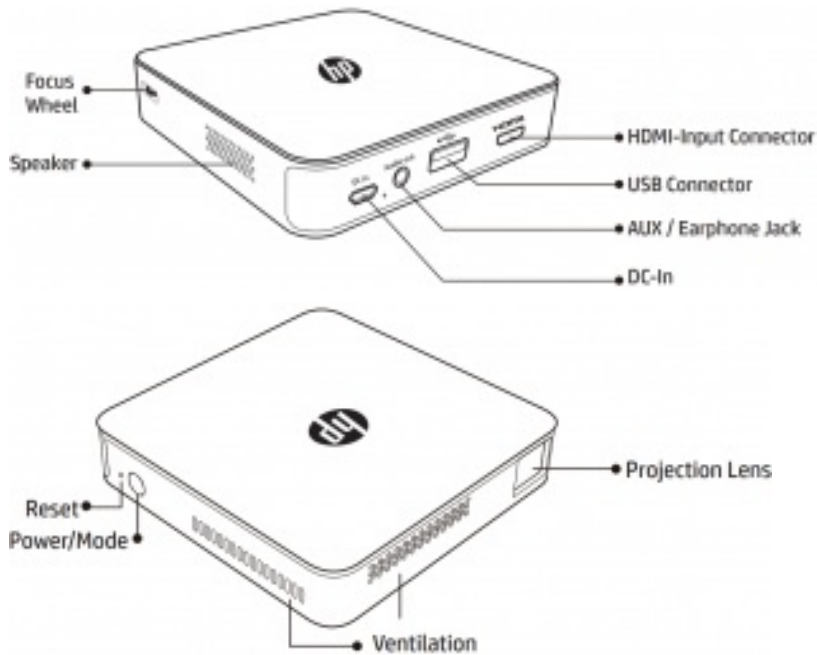
### Contents

- [1 Package content](#)
- [2 Product Overview](#)
- [3 Turning on/off the Projector](#)
- [4 Adjusting the Focus](#)
- [5 Toggling between iOS and Android mode](#)
  - [5.1 iOS Mode](#)
  - [5.2 Android Mode](#)
- [6 USB Projection from iPhone](#)
- [7 Projecting from PC/NB or other media devices](#)
- [8 Troubleshooting](#)
- [9 Specifications](#)
- [10 Documents / Resources](#)
- [11 Related Posts](#)

### Package content

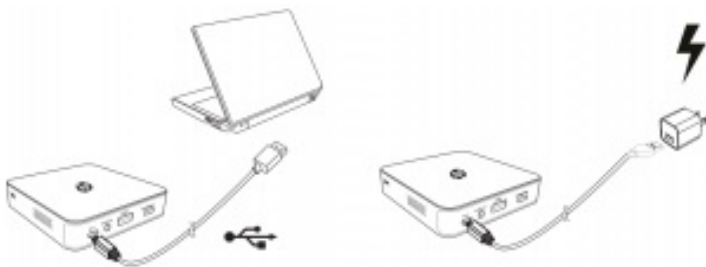
- P100 Projector
- HDMI Cable
- USB Cable
- Carry Pouch
- Tripod
- Power Adapter
- Quick Start Guide
- Warranty Card

## Product Overview





## Charging the product

Connect the USB cable to a Mobile phone power adapter or PC / Notebook to charge.



- The Product will be fully charged after 5 hrs. from zero percent battery capacity.

## Turning on/off the Projector


- Press the power key  for 8 sec., the projector will Power on.
- Long-Press the power key 
- for 8 sec. in operation, the projector will Power off.

## Adjusting the Focus



Adjust the focus by using the focus wheel on the left side to achieve a sharper image.

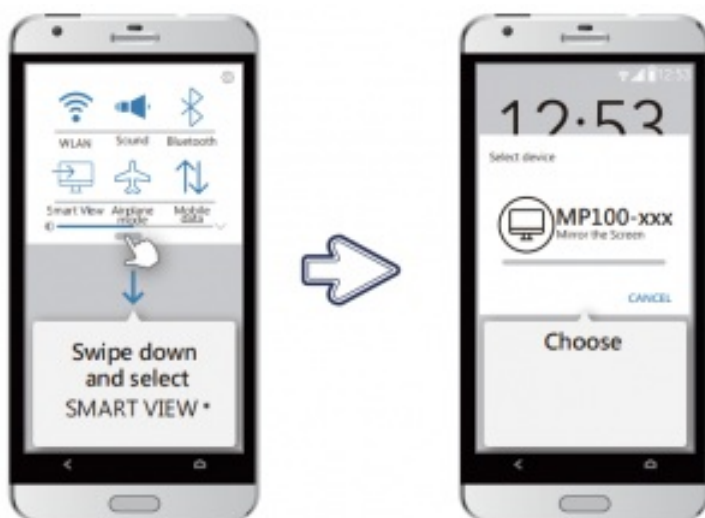
## Toggling between iOS and Android mode

Press the power button  shortly, it will change connection mode between iOS and Android, then follow the screen instructions to connect your phone to project

### iOS Mode



### Android Mode



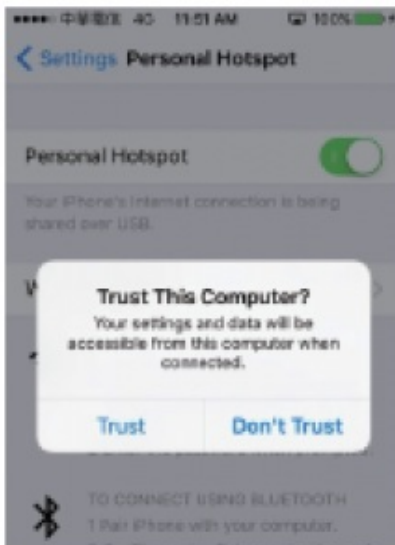
## TIP Wireless Screen Mirroring

Other possible names:

- Miracast
- Smart View
- Screen Sharing
- Screen Projection
- Mirror Share
- Wireless Display
- Wi-Fi Direct

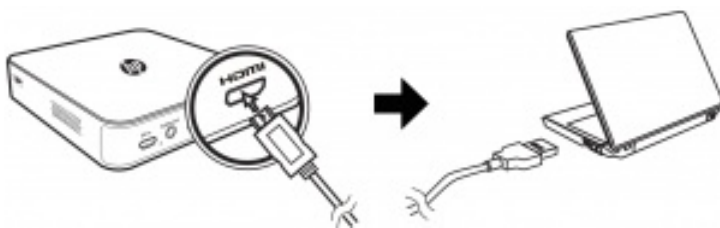
## USB Projection from iPhone

- Make sure the device is set to “iOS” mode.
- Connect your lightning cable (not included) from iPhone to the projector then click “Trust” in iPhone.



- After a few seconds, the screen will be mirror projected.

## Projecting from PC/NB or other media devices



Using A to C type HDMI cable (mini HDMI) to connect the projector from PC/NB or another media device.

## Troubleshooting

If your projector does not seem to be functioning properly, please check the following before you contact an authorized service center.

Symptom	Check Point
The projector does not turn on after pressing the power button for more than 8 seconds.	Ensure the battery is fully charged.
The projected image is blurred.	<ol style="list-style-type: none"> <li>1. Adjust the focus by using focus wheel.</li> <li>2. Check if the projection lens is dirty, clean it if required.</li> </ol>
The surface temperature of the projector is hot .	It is normal for this projector to generate moderate heat during operation.
The projector does not display when connecting to a notebook PC.	<ol style="list-style-type: none"> <li>1. Check if the HDMI cable is plugged correctly.</li> <li>2. Make sure the PC has been switched to projector display.</li> </ol>
Abnormal performance	If the projector is running slow, freezing, crashing or locking up during the operation, you can try to insert a slim, pointy object into the reset hole to trigger a hardware reset.

## Specifications

Item	Description
Optical Technology	DLP
Light Source	RGB LED
Resolution	854 x 480 Pixels (WVGA)
Contrast Ratio	1000:1
Projection Image Size	20" ~100" (51 ~ 255cm)

Projection Distance	21" ~125 " (53 ~ 319cm)
Aspect Ratio	16:9
Throw Ratio (Diagonal: Distance)	1.2
Brightness	Up to 100 lumens
Focus	Manual
Offset	0 %
Connectivity	Wi-Fi, HDMI-IN, USB, Audio-Out-Jack
Wi-Fi	802.11b/g/n
Internal Speaker	YES
Power Input	5V / 3A
Battery Type	Embedded 2400 mAh, Li-polymer rechargeable battery
Battery Power	80 min
Battery Consumption	12W
Dimension (L x W x H)	97.8 x 97.8 x 23mm 3.85" x 3.85 " x 0.90 "
Weight	140 g / 0.30 lb
Operating Temperature	5 °C ~ 35 °C

- All specifications are subject to change without notice.

## Documents / Resources



User  
Manual

Copyright © 2014 Hewlett-Packard Development Company, L.P.  
All rights reserved. HP, the HP logo, and the HP logo with the HP logo are trademarks of Hewlett-Packard Development Company, L.P. All other marks contained herein are the property of their respective owners.

[HP MP 100 Mobile Projector](#) [pdf] User Manual  
MP 100 Mobile Projector, MP 100, Mobile Projector