




## hp jump 2 Mouse User Guide

[Home](#) » [HP](#) » hp jump 2 Mouse User Guide 

jump<sub>2</sub>group

**Color Side 1:**

BLACK

**Color Side 2:**

BLACK

**Flat size:**

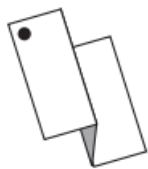
11 x 17 in. (279.4 x 431.8 mm)

**Finished size:**

3.66 x 2.833 in (92.964 x 71.9582 mm)

**Fold 1:**

3-panel Accordion



**Fold 2:**

6-panel Accordion

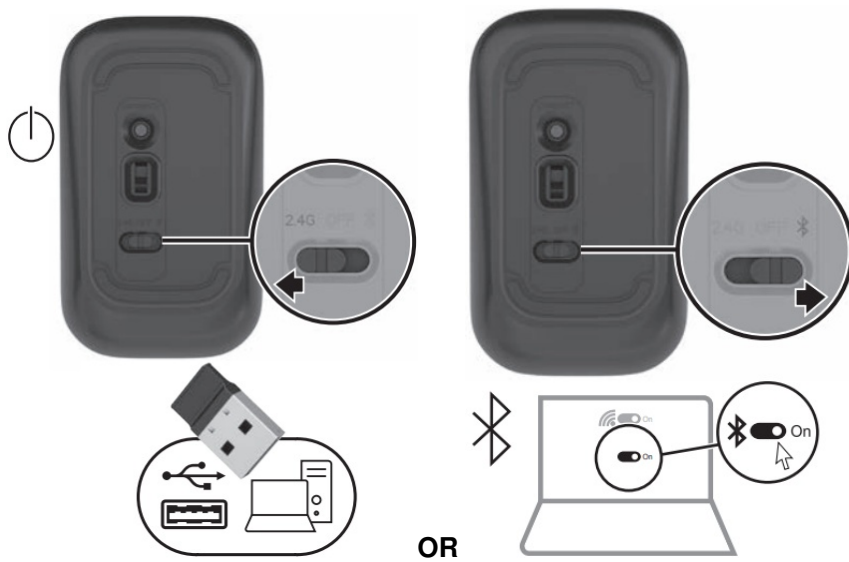




1



2



3



PRINTER: Replace this box with Printed- In (PI) Statement(s) as per spec.

NOTE: This box is simply a placeholder. PI Statement(s) do not have to fit inside the box but should be placed in this area.



N31684-A21

Light Status	Description
Solid white (5 s)	The mouse is on.
Slowly blinking amber	The battery needs to be replaced.
Slowly blinking white (180 s)	The mouse is in pairing mode.
Quickly blinking white (2 s)	The mouse is paired.



For regulatory, certification, and environmental information, including Restriction of Hazardous Substances (RoHS), scan the QR code, or go to [www.hp.com/go/regulatory](http://www.hp.com/go/regulatory).

**RMN: TPA-A003M + TPA-A001D**

© Copyright 2023 HP Development Company, L.P.  
The Bluetooth trademarks are owned by their proprietor and used by HP Inc. under license.  
The information contained herein is subject to change without notice. The only warranties for HP products and services are set forth in the express warranty statements accompanying such products and services. Nothing herein should be construed as constituting an additional warranty. HP shall not be liable for technical or editorial errors or omissions contained herein.

First Edition: January 2023

NB\_OPT\_QSP\_Gadget\_Dual\_Con\_N31684-A21\_v2.indd 10/5/2022 1:20:13 PM


Contents

1 Documents / Resources

1.1 References

2 Related Posts

Documents / Resources



[hp jump 2 Mouse](#) [pdf] User Guide

MU112, PRDMU112, jump 2 Mouse, jump 2, jump Mouse, Mouse

References

- [HP Regulatory, Safety, and Compliance Information | HP® Customer Support](#)