



HP 975 Dual-Mode Wireless keyboard User Guide

[Home](#) » [HP](#) » HP 975 Dual-Mode Wireless keyboard User Guide 

Contents

- [1 HP 975 Dual-Mode Wireless keyboard](#)
- [2 What's in the box](#)
- [3 Description](#)
- [4 Features](#)
- [5 How to use](#)
- [6 Components description](#)
- [7 Detailed Overview of key functions](#)
- [8 User Support](#)
- [9 FAQ's](#)
- [10 Related Posts](#)



HP 975 Dual-Mode Wireless keyboard



What's in the box

1. Wireless Keyboard
2. Type-C Cable
3. Dongle



Description

Now that you can customize your keyboard completely, typing will be a more enjoyable experience. This is due to the fact that you can use Bluetooth® or USB-A to connect up to three devices. Many other essential features have also been added, such as long-lasting, rechargeable batteries, and pleasant, quiet, soft return keys, 20+ of which may be programmed with shortcuts.

Features

Connection and Flexibility

Flexible connectivity choices increase options. One button may select between up to three connected devices, two via Bluetooth® and one via a 2.4 GHz USB-A adapter. Additionally, Microsoft Swift Link makes it simple to pair devices with a Windows 10 PC in just two steps.

Smart Elements. better experience when typing

This keyboard's raised key height, finger-shaped keys with a little dip, and soft return technology silently provide consistent, comfortable typing. Additionally, programmable smart sensors regulate the brightness of the keys based on the lighting in the area and turn them on when you approach or off when not in use to conserve energy.

Extended-Life Rechargeable Battery

Battery changes that happen frequently are more than annoying. The solution is a battery that can be recharged with a standard USB-C connection that lasts for more than six months.

Adapt for Control

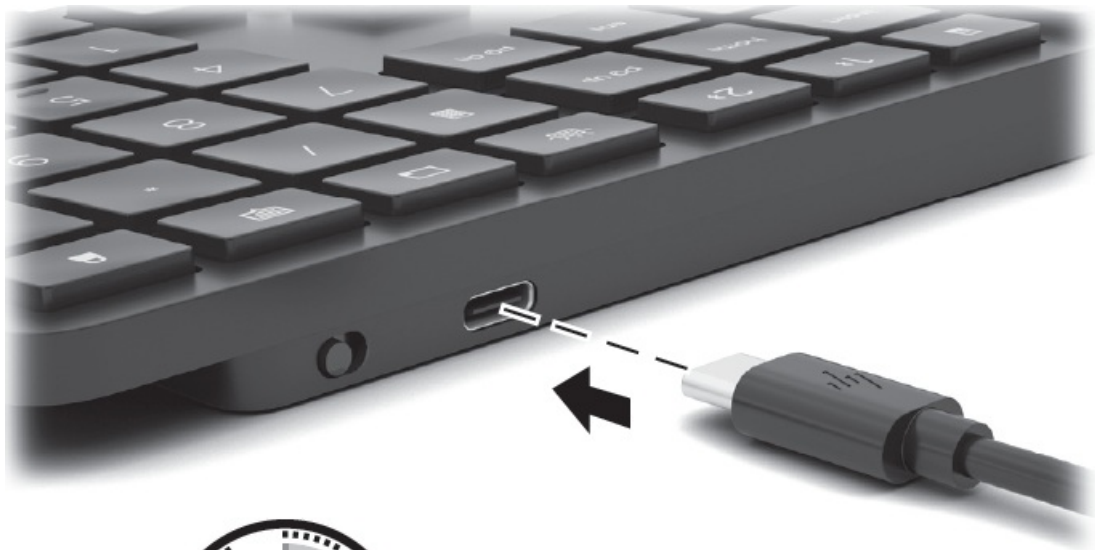
By configuring 20+ keys with shortcuts for your most frequently used programs, HPAC allows you to customize your keyboard and cut down on unnecessary keystrokes. Additionally, you may configure the backlighting feature by turning it on or off, modifying the light's brightness, and setting a schedule for the sleep mode.

How to use

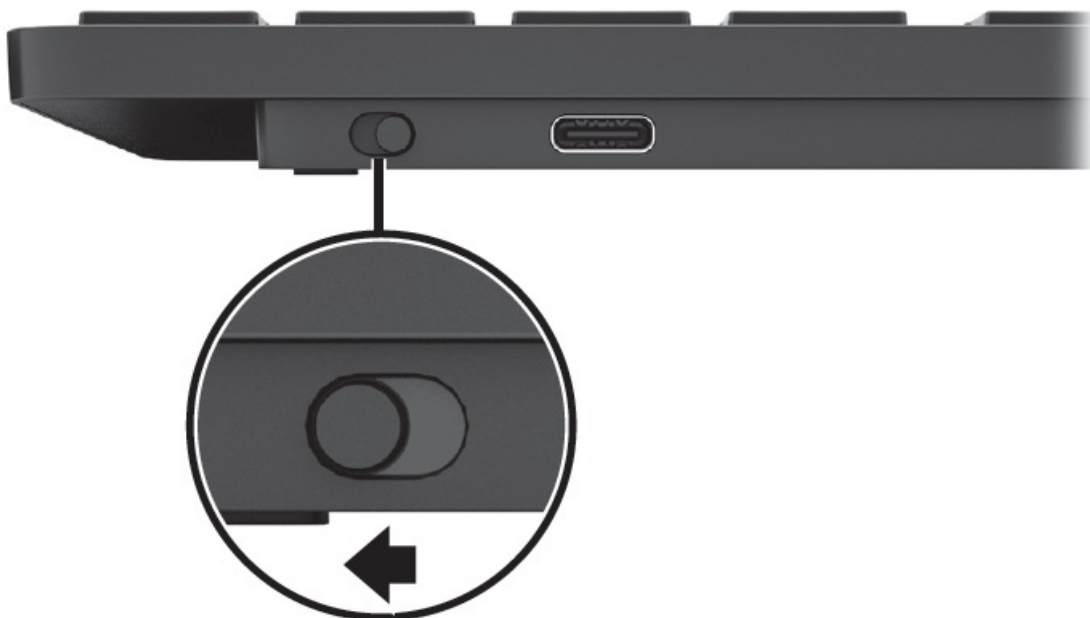
Connect the keyboard to one computer using the receiver and up to two computers via Bluetooth®. To program the keyboard keys, use the software. If the software does not download automatically, on your computer, open Microsoft Store or Apple Store®. Search for HP Accessory Center, and then download the app.

Components description

1. **Programmable keys** to change the default functions, use HP Accessory Center.

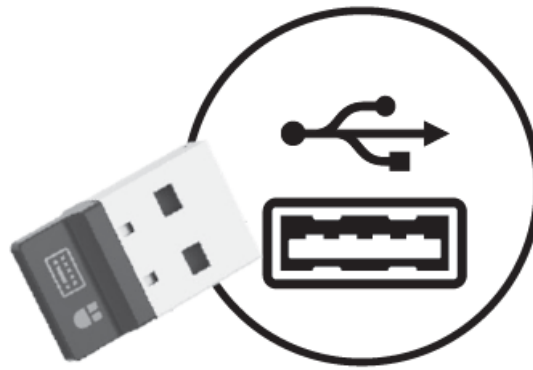


2. **Receiver key and light** Press to select the receiver channel.

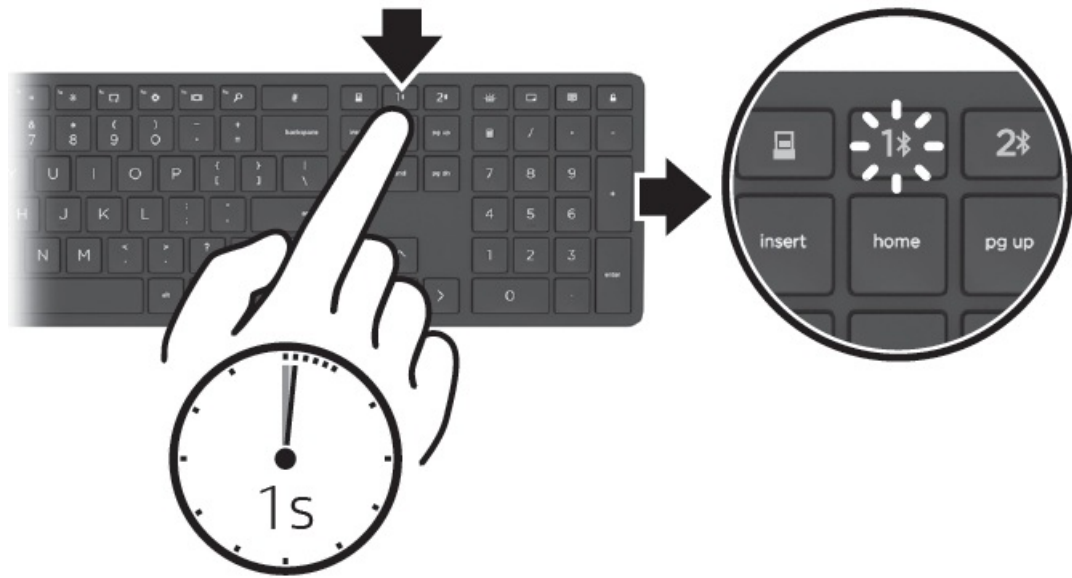


- **Quickly blinking white (5s):** The receiver channel is currently selected, and the receiver is not connected to a computer.
- **Solid white (5s):** The keyboard is connected to the computer to which the receiver is connected.

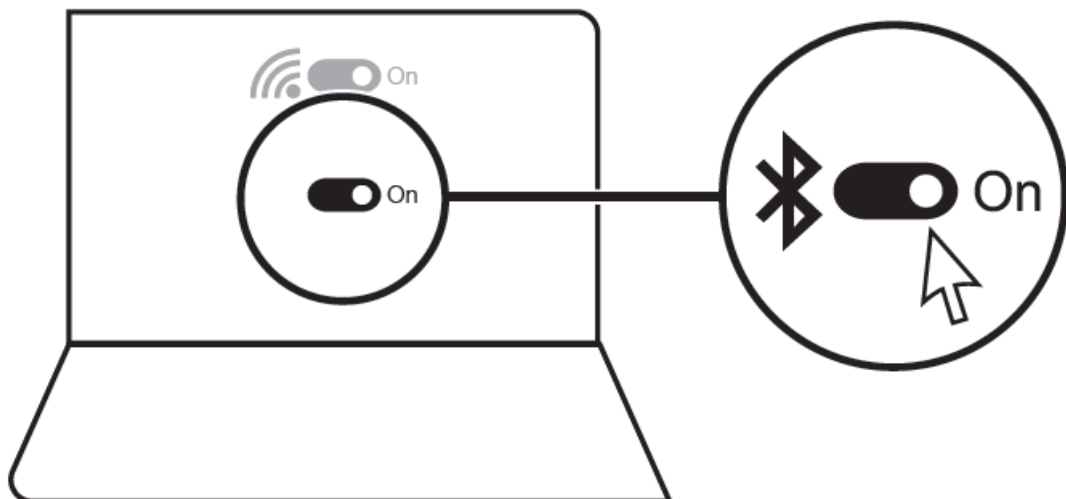
3. **Bluetooth keys and lights** Press to select the first or second Bluetooth channel.



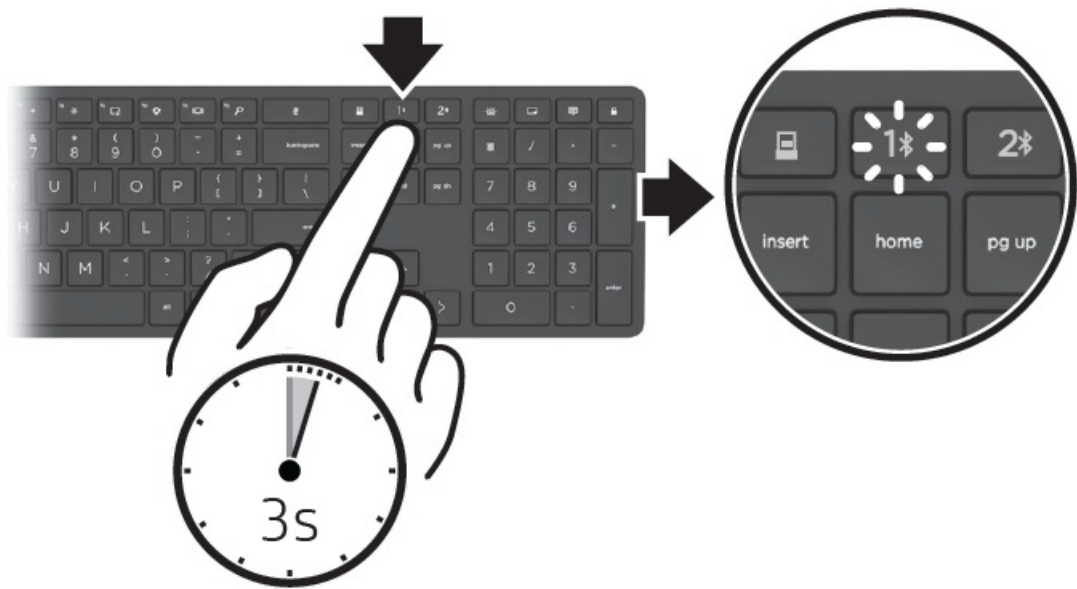
- **Quickly blinking white (5s):** The illuminated Bluetooth channel is currently selected. If you attempted to pair the keyboard to a computer, the pairing was not successful.



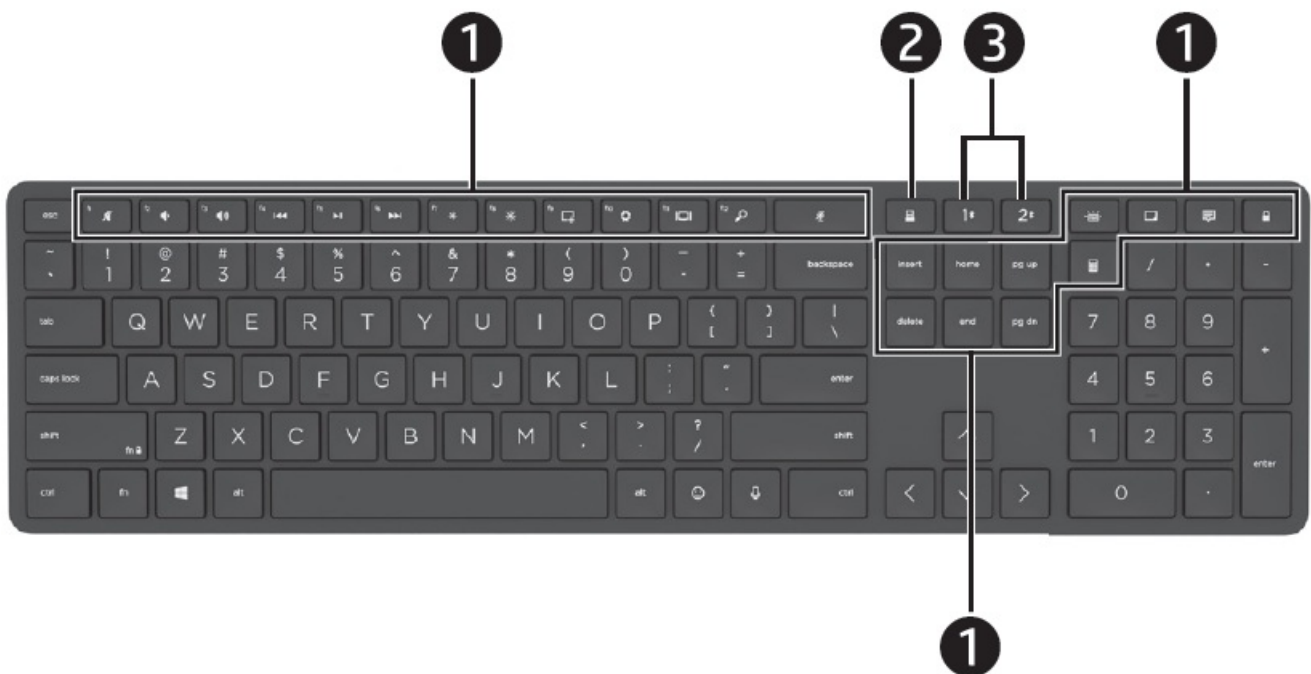
- **Solid white (5s):** The keyboard is connected to the computer that is paired to the illuminated Bluetooth channel.



- **Slowly blinking white (180s):** The illuminated Bluetooth channel is in pairing mode.



Detailed Overview of key functions



User Support

[http:// www.hp.com/support](http://www.hp.com/support)

To download the Bluetooth Pairing User Guide, go to <http://www.hp.com/support>.

FAQ's

How many keys on the 975 dual-mode wireless keyboard can be programmed?

By programming the 20+ keys on your HPAC keyboard with shortcuts for your most frequently used programs, you can personalize it and cut down on unnecessary keystrokes. Additionally, you may switch the backlighting feature on or off, alter the light's brightness, and set a timeframe for the sleep mode.

What does the HP wireless keyboard's pairing button do?

The Connect button is red and may be found on the back corner of the keyboard, underneath the plastic tab

Is there a switch to turn the HP wireless keyboard on and off?

The wireless keyboard and mouse have a switch on the bottom.

What renders a wireless keyboard inoperable?

The batteries you are using don't have much power.

How many buttons can I press at once with my keyboard?

Most keyboards can only accommodate six simultaneous inputs.

Can one PC support two wireless keyboards?

The Simple Way: Directly Connect Both Keyboards or Mice, To view all of your connected Bluetooth and other devices on Windows 10, go to Settings > Devices > Bluetooth & other devices. Under the Mouse section, you can modify how your mice behave, however, these changes will be made for all connected mice.

What does the wireless keyboard's function key do?

Simply put, the Fn key, when combined with the F keys located across the top of the keyboard, offers shortcuts for carrying out tasks like adjusting the screen's brightness, turning on/off Bluetooth, and turning on/off WiFi.

Wireless keyboards connect in what way?

Like a wireless mouse, a wireless keyboard operates by having a receiver plugged into a USB port on your computer.

What is the wireless keyboard's range?

While a Bluetooth keyboard's typical range can go up to about 30 feet.

How do I operate my computer's keyboard?

When you type, you press each key on the keyboard separately.

Are all Bluetooth wireless keyboards the same?

It's crucial to start by determining the kind of connection you require. Some less expensive models solely use Bluetooth, whereas many higher-end keyboards can connect wirelessly using either a USB receiver or Bluetooth. Similarly, battery life is still another factor.

On a wireless keyboard from HP, where are the batteries?

To add two AA batteries, there is a sliding battery cover on the bottom side of the keyboard that is simple to slip off and on.

Does a wireless keyboard have an automatic off switch?

Because it knows to turn back on the moment you hit the keyboard, it is not in auto-OFF but rather an auto sleep mode. To maintain such mode, not much power is required. By leaving the on/off switch in the ON position rather than switching between the OFF and ON positions, you will likely extend its lifespan.

Can a wireless keyboard be connected without a USB?

No USB port is necessary when using Bluetooth to connect straight to your computer.

Which HP keyboard should I use next?

Locate and open Language settings to alter the keyboard layout. Select Options after choosing a language on the Time & Language window. Select a keyboard layout from the list by clicking Add a keyboard under Keyboards. Press the Windows + SPACE BAR keys to change keyboard layouts.

Download this PDF Link: [HP 975 Dual-Mode Wireless keyboard Quick User Guide](#)

Manuals+