



# hp 9020e Series All-In-One Printer User Guide

[Home](#) » [HP](#) » hp 9020e Series All-In-One Printer User Guide 

## Contents

- [1 hp 9020e Series All-In-One Printer](#)
- [2 INSTALLATION](#)
- [3 DOWNLOAD APP](#)
- [4 CONNECT](#)
- [5 Documents / Resources](#)
  - [5.1 References](#)
- [6 Related Posts](#)

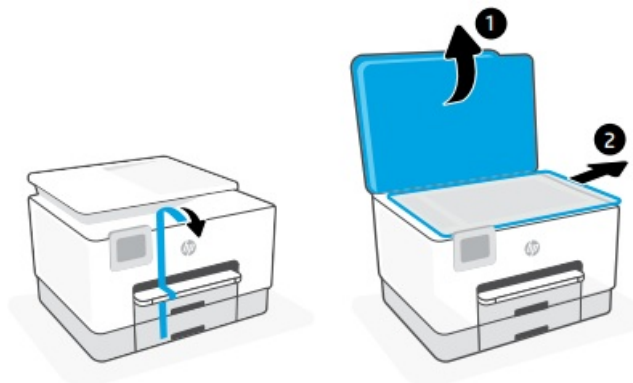


**hp 9020e Series All-In-One Printer**



## INSTALLATION

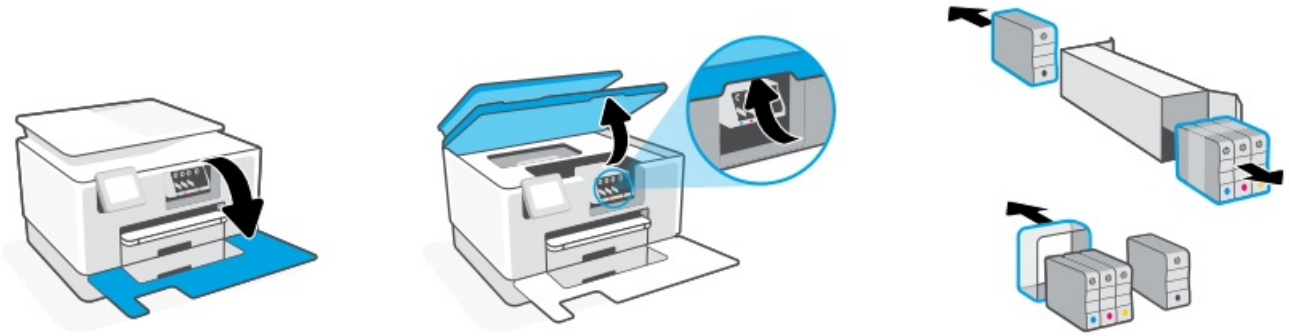
1. Remove all tape and packaging material.



2. Plug in to automatically power on. Select language and country/region.

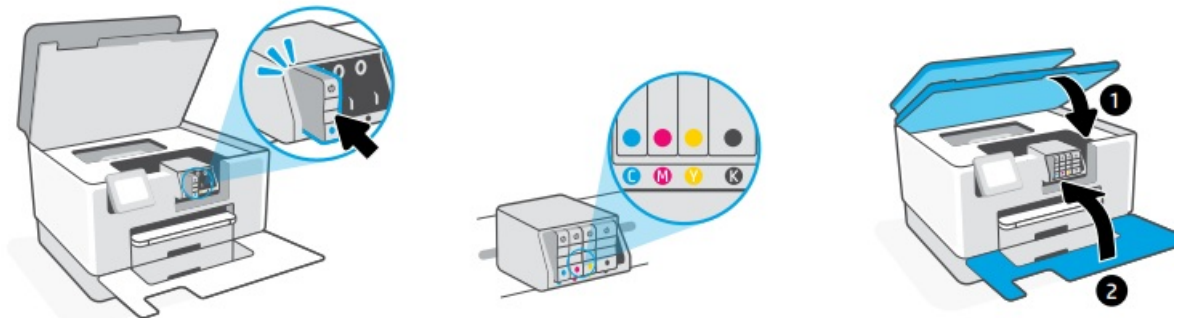


3. Open the front door and then lift the carriage access door by the scanner lid. Unpack cartridges.



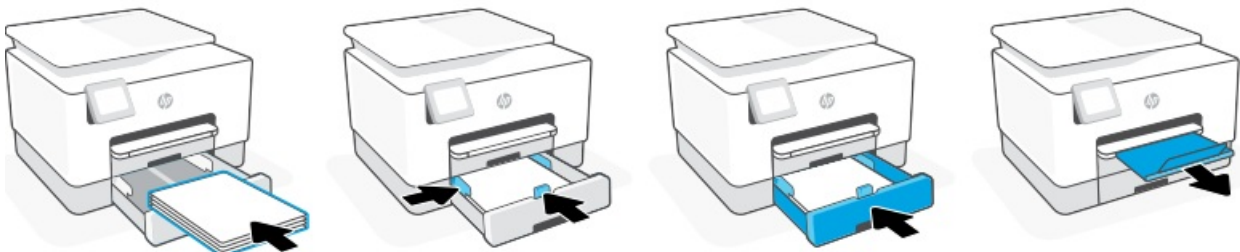
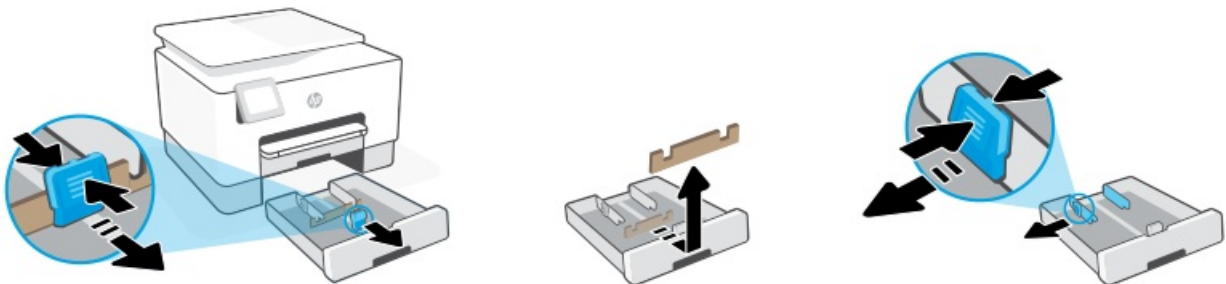
4. Insert each cartridge securely into the indicated slot. Close both doors.

**Note:** Make sure to use the cartridges provided with the printer for setup.

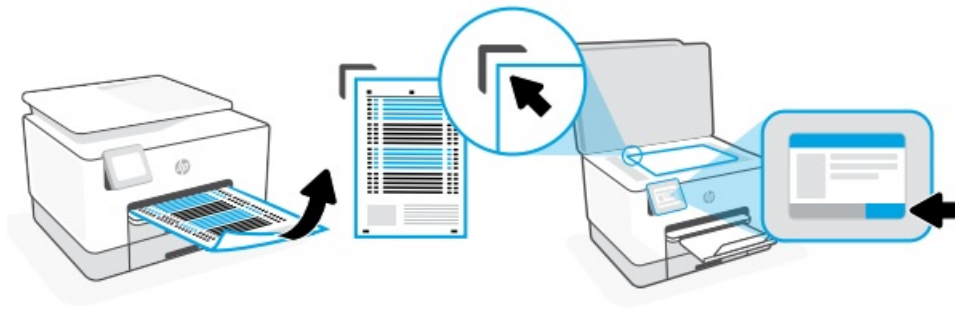


5. Open the paper tray. Slide out the front length guide, remove the cardboard, and slide out the width guides.

Load a Letter or A4 paper and adjust the guides. Close the tray and pull open the output tray extender.

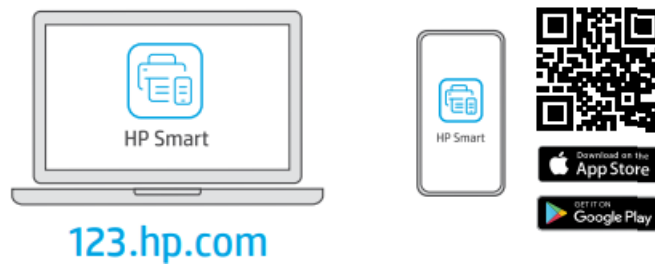


6. Use the control panel to print and scan the alignment page.



## DOWNLOAD APP

- Install the required HP Smart software from [123.hp.com](https://123.hp.com) or your app store on a computer or mobile device.



## CONNECT

- Follow the instructions in HP Smart to connect the printer to a network and activate HP+ features.



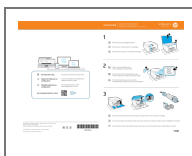
If connecting the printer to Wi-Fi, your computer or mobile device must be near the printer during the setup. See Reference Guide for Wi-Fi troubleshooting and tips.

### Get help with setup

Find setup information and videos online.

[hp.com/support/printer-setup](https://hp.com/support/printer-setup)

## Documents / Resources



[hp 9020e Series All-In-One Printer](#) [pdf] User Guide  
9020e Series All-In-One Printer, 9020e Series, All-In-One Printer, Printer

## References

- [123.hp.com](https://123.hp.com) - HP Smart
- [hp.com/support/printer-setup](https://hp.com/support/printer-setup)

