



hp 8020e Series All-in-One Printer User Guide

[Home](#) » [HP](#) » [hp 8020e Series All-in-One Printer User Guide](#) 

Contents

- [1 hp 8020e Series All-in-One Printer](#)
- [2 Prepare printer](#)
 - [2.1 Scan alignment page](#)
- [3 Documents / Resources](#)
 - [3.1 References](#)
- [4 Related Posts](#)



hp 8020e Series All-in-One Printer

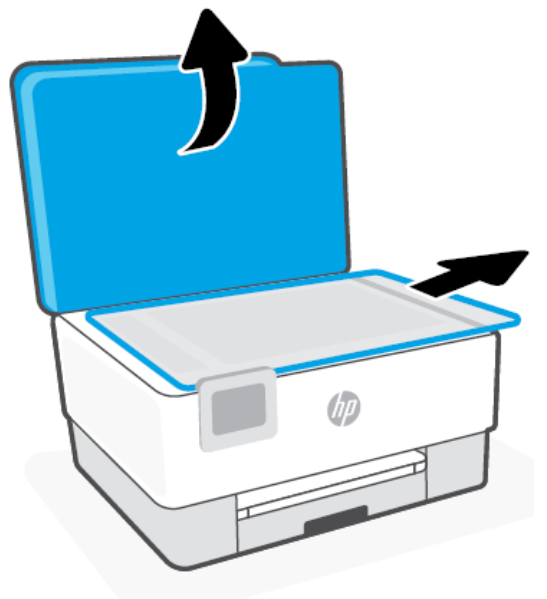
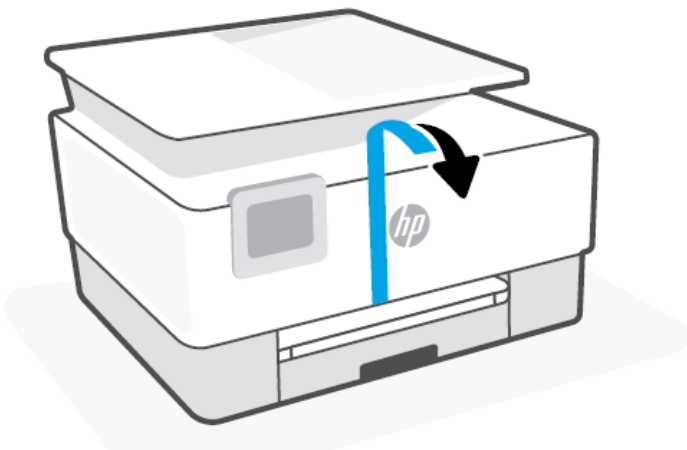


Find setup information and videos online

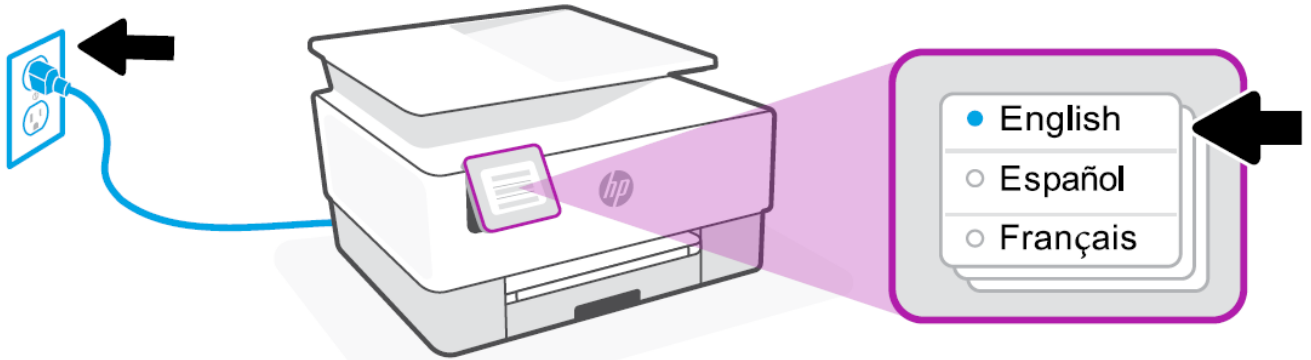
hp.com/support/printer-setup



Prepare printer

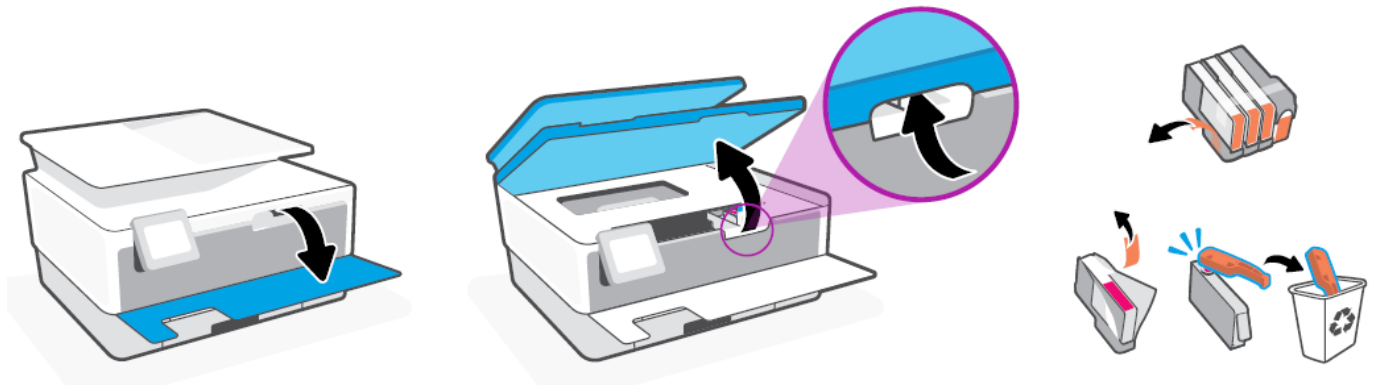


Remove all tape and packaging material.



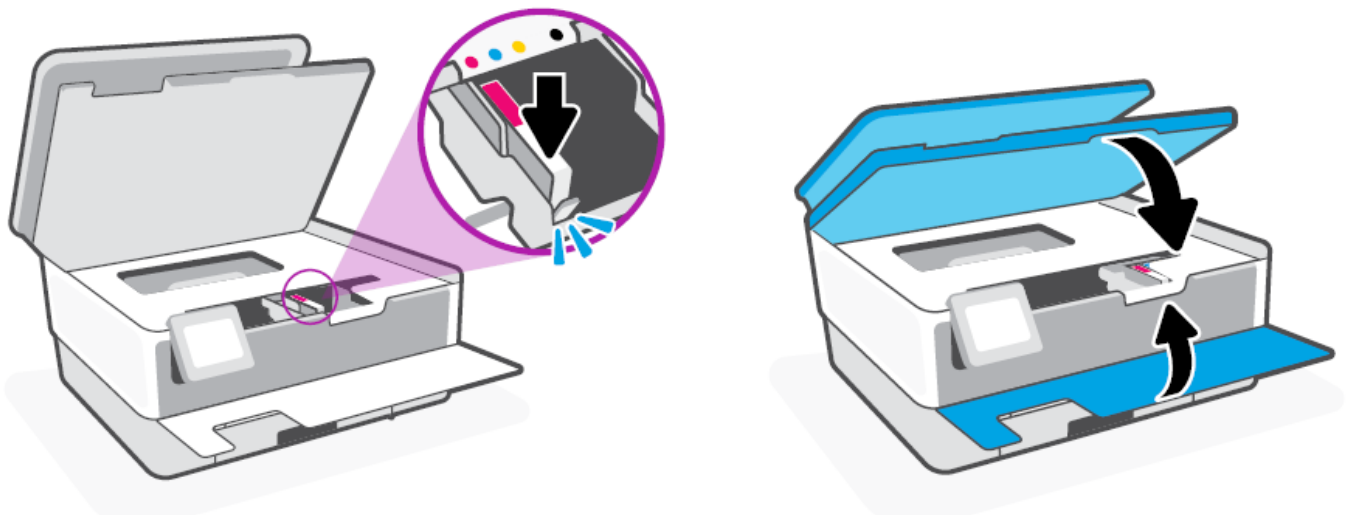
Plug in to automatically power on. Select language and country/region.

Cartridge access



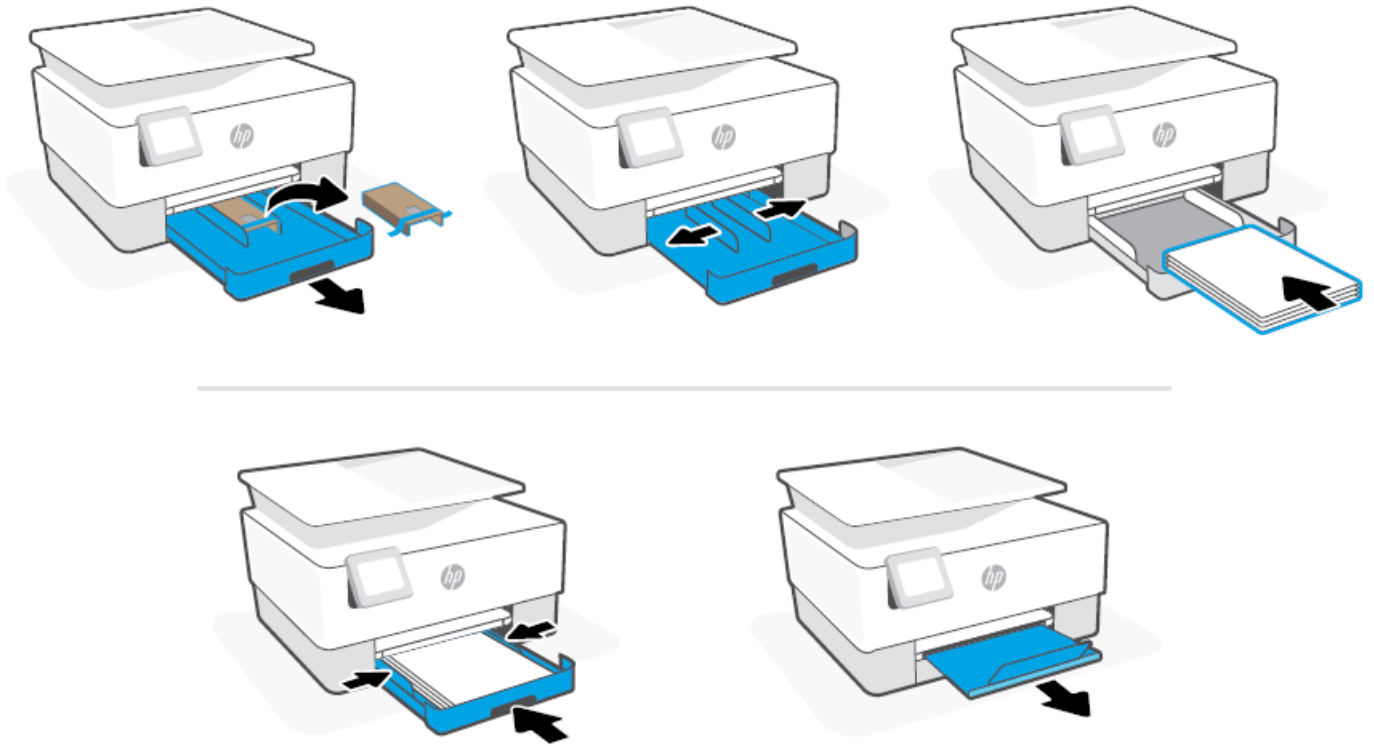
Open the front door and then lift the cartridge access door by the scanner lid. Remove the plastic guard. Remove cartridge packaging, tape, and orange guards.

Insert cartridges



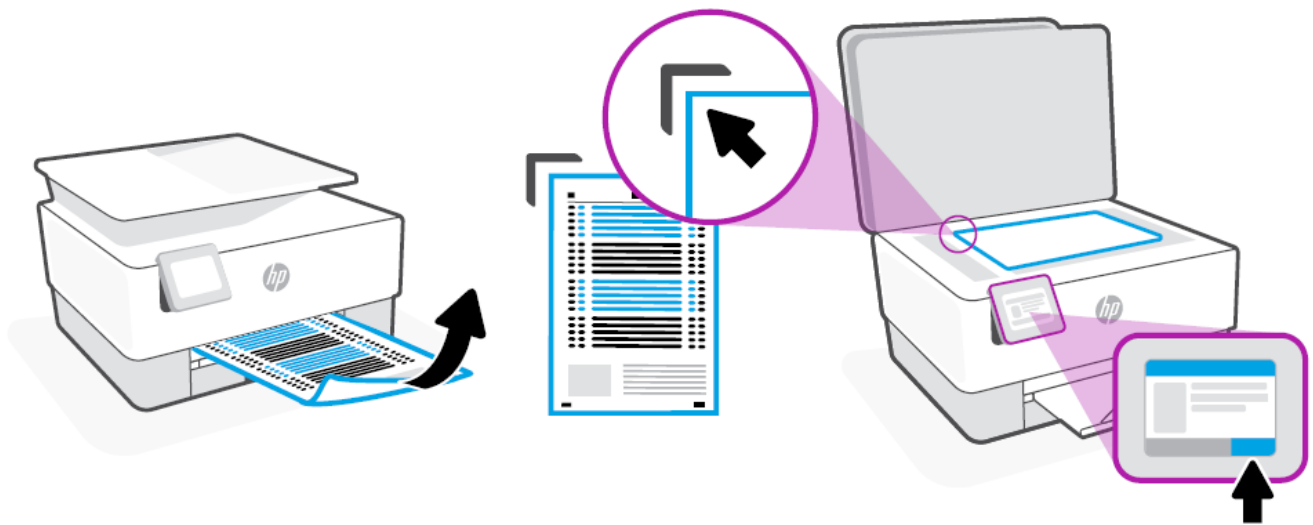
Insert each cartridge securely into the indicated slot. Close both doors

Prepare paper tray



Open the paper tray, remove the cardboard, and slide out the guides. Load Letter or A4 paper and adjust the guides. Close the tray. Pull open the output tray extender.

Scan alignment page



Use the control panel to print and scan the alignment page.

Install HP Smart software (required)



View instructions to connect to Wi-Fi and finish setup in the HP Smart software.
Go to 123.hp.com on a mobile device or computer to install.

Continue printer setup in HP Smart



*HP account required

© Copyright 2021 HP Development Company, L.P.

The Apple logo is a trademark of Apple Inc., registered in the U.S. and other countries.

App Store is a service mark of Apple Inc.

Android, Google Play, and the Google Play logo are trademarks of Google Inc.

Documents / Resources



[hp 8020e Series All-in-One Printer \[pdf\] User Guide](#)
8020e Series All-in-One Printer, 8020e Series, All-in-One Printer, Printer

References

- [123.hp.com - HP Smart](#)
- [hp.com/support/printer-setup](#)

Manuals+.