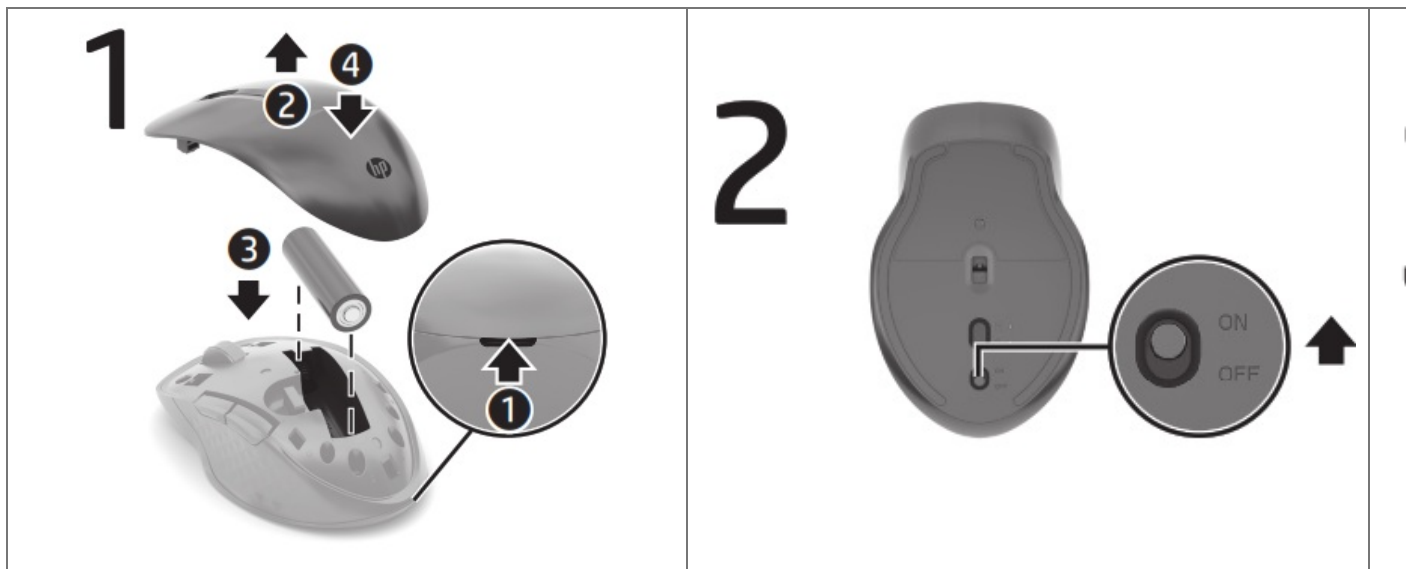




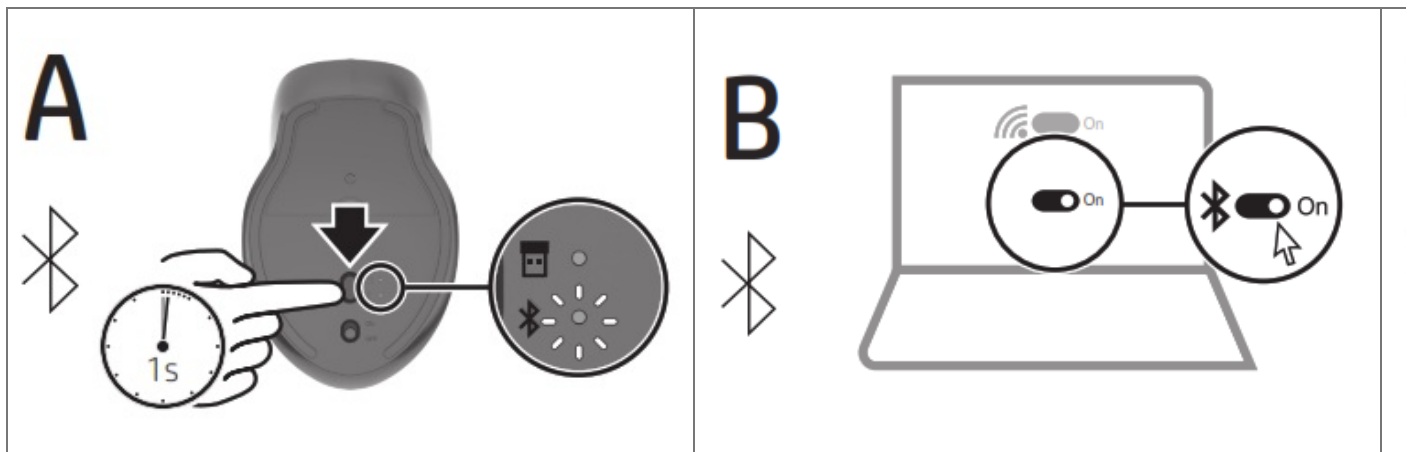
hp 435 Multi-Device Wireless Mouse User Guide

[Home](#) » [HP](#) » hp 435 Multi-Device Wireless Mouse User Guide





OR



D www.hp.com/support



To download the Bluetooth Pairing User Guide, go to <http://www.hp.com/support>.



PRINTER: Replace this box with Printed- In (PI) Statement(s) as per spec.

NOTE: This box is simply a placeholder. PI Statement(s) do not have to fit inside the box but should be placed in this area.



M54394-B21



Connect the mouse to one computer using the receiver or one computer via Bluetooth®.

To program the mouse buttons or change the DPI setting from 800 to 4000 DPI (default 1200 DPI), use the software. If the software does not download automatically, on your computer, open **Microsoft Store** or **Apple Store**. Search for **HP Accessory Center**, and then download the app.

Contents [[hide](#)

[1 Components description](#)

[2 Documents / Resources](#)

[3 Related Posts](#)

Components description

1. Programmable forward button

By default, press to display the next page in your application history.

2. Programmable back button

By default, press to display the previous page in your application history.

3. Programmable scroll wheel

Scroll up and down or press and hold to pan across the display. To change the scrolling speed, use the software.

4. Pairing button

Press to switch between channels. Press and hold to enter pairing mode.

5. Receiver light

Solid (5 s): The mouse and receiver are connected to the same computer.

6. Bluetooth pairing light Two blinks and a pause (180 s):

The mouse is reconnecting to a previously paired device.

Solid (5 s): The Bluetooth connection or reconnection was successful.

Slowly blinking (180 s): The Bluetooth channel is currently selected, and the mouse is in pairing mode.



<http://www.hp.com/go/regulatory>

For regulatory information, scan the QR code or go to

© Copyright 2021 HP Development Company, L.P.

The Bluetooth trademarks are owned by their proprietor and used by HP Inc. under license.

The information contained herein is subject to change without notice. The only warranties for HP products and services are set forth in the express warranty statements accompanying such products and services. Nothing herein should be construed as constituting an additional warranty. HP shall not be liable for technical or editorial errors or omissions contained herein.

First Edition: June 2021

Documents / Resources



[hp 435 Multi-Device Wireless Mouse](#) [pdf] User Guide
435 Multi-Device Wireless Mouse, HSA-P012M, HSA-P012D