

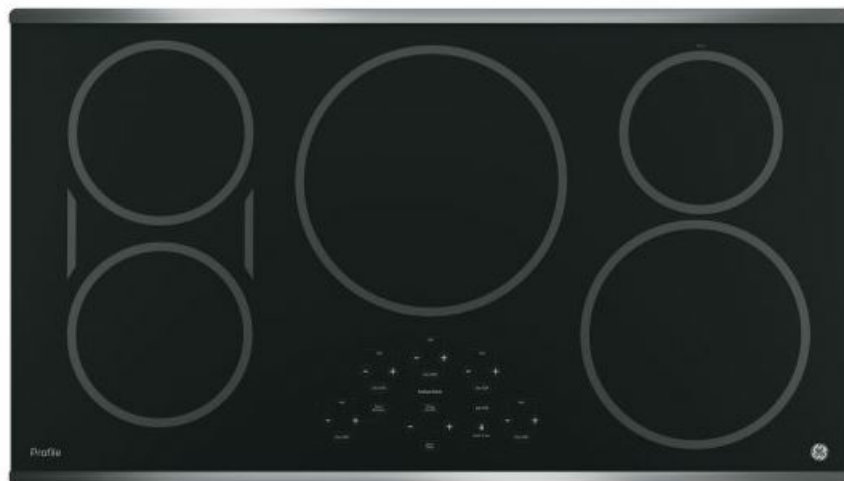


GE PHP9036ST Profile Built In Touch Control Induction Cooktop Installation Guide

[Home](#) » [GE](#) » GE PHP9036ST Profile Built In Touch Control Induction Cooktop Installation Guide 



GE PHP9036ST Profile Built-In Touch Control Induction Cooktop



Product Information

The GE Profile™ 36 Built-In Touch-Control Induction Cooktop is a high-quality kitchen appliance that provides precise temperature control and cooking flexibility. The cooktop has a KW rating of 240V 11.1 and 208V 9.6 with amperage of 240V 50 Amps and 208V 50 Amps, making it energy-efficient and cost-effective. It comes with a smart cookware rebate, which allows for easy pairing with smart pans for perfect cooking results. The cooktop is also ADA-compliant and listed by Underwriters Laboratories.

Dimensions and Installation Information (in inches)

It is important to note that the cooktop requires a 3-inch free area between the bottom of the cooktop and any combustible material, such as shelving. However, a free area is not required when installing a wall oven underneath the cooktop. The unit comes furnished with a 48-inch flexible armored cable.

The approximate cooking dimensions are as follows:

- 13 inches maximum depth of unprotected overhead cabinets
- 4-5/8 inches at the baffle near the center of the unit (except when installed above an approved wall oven) and 3-1/4 inches at the rear of air intake
- 36-1/8 inches Cooktop
- 20-1/2 inches
- 18-7/8 inches
- 33-3/4 inches
- 19-1/8 to 19-1/4 inches
- 1-3/4 inches minimum to the rear wall
- 33-7/8 to 34 inches
- 2-1/2 inches minimum required

It is best to make a template when cutting the opening in the counter to ensure accuracy.

Installation Above a Wall Oven

When installing above a wall oven, there should be a 2-1/2 inches minimum from the front edge of the countertop to the front edge of the cooktop cutout and a 31-1/4 inches minimum from the top surface of the countertop to the top surface of the wall oven support platform. There should also be a 30 inches minimum clearance from the countertop to an unprotected overhead surface. The cooktop requires a 2 inches minimum clearance to the side wall from the cut-out on the left of the unit and a 15 inches minimum height from the countertop to the nearest cabinet (including light rails) on both sides of the cooktop. Check local codes for the required breaker size.

Product Usage Instructions

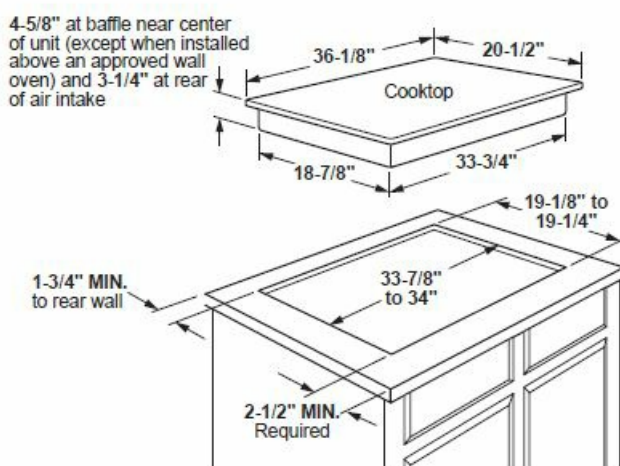
1. Ensure that there is a 3-inch free area between the bottom of the cooktop and any combustible material, such as shelving.
2. Make a template when cutting the opening on the counter to ensure accuracy.
3. When installing above a wall oven, ensure that there is a 2-1/2 inches minimum from the front edge of the countertop to the front edge of the cooktop cutout and a 31-1/4 inches minimum from the top surface of the countertop to the top surface of the wall oven support platform.
4. Ensure there is a 30 inches minimum clearance from the countertop to an unprotected overhead surface.
5. Ensure there is a 2 inches minimum clearance to the side wall from the cut-out on the left of the unit and a 15 inches minimum height from the countertop to the nearest cabinet (including light rails) on both sides of the cooktop.
6. Check local codes for the required breaker size.
7. The cooktop comes furnished with a 48-inch flexible armored cable.
8. Use smart pans that easily pair with this smart cooktop to ensure you get the perfect cooking results and earn a rebate for a free 11 Hestan Cue Smart Pan.
9. The cooktop also comes with an optional Sous Vide Probe, which lets you achieve great results on the stove.

DIMENSIONS AND INSTALLATION INFORMATION (IN INCHES)

IMPORTANT: Requires a 3" free area between the bottom of the cooktop to any combustible material, i.e., shelving. Free area not required when installing wall oven underneath the cooktop. Refer to installation instructions. Requires a 15" minimum from cooktop to adjacent overhead cabinets. Units are furnished with a 48" flexible armored cable.

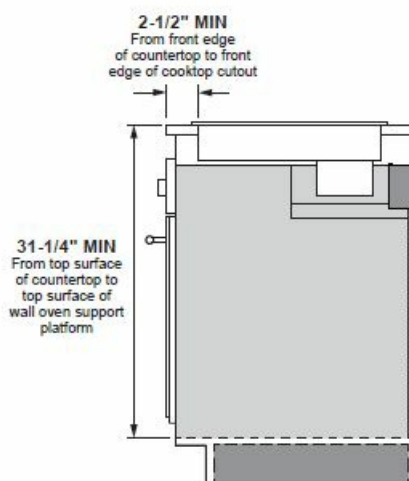
NOTE: 36" induction cooktops are approved for use over select GE 30" Single Wall Ovens and Warming Drawers. Refer to the cooktop and wall oven/warming drawer installation instructions packed with product for current dimensional data. If installed with a GE Telescopic Downdraft System, consult both the cooktop and downdraft installation instructions packed with the product before installing. The cooktop gas/electric supply may need to be re-routed to install the downdraft. The countertop cutout requires a 23-1/2" minimum flat countertop surface and a 25" minimum total countertop depth. In addition, other clearances to the front edge of the countertop must be considered.

APPROXIMATE COOKING DIMENSIONS

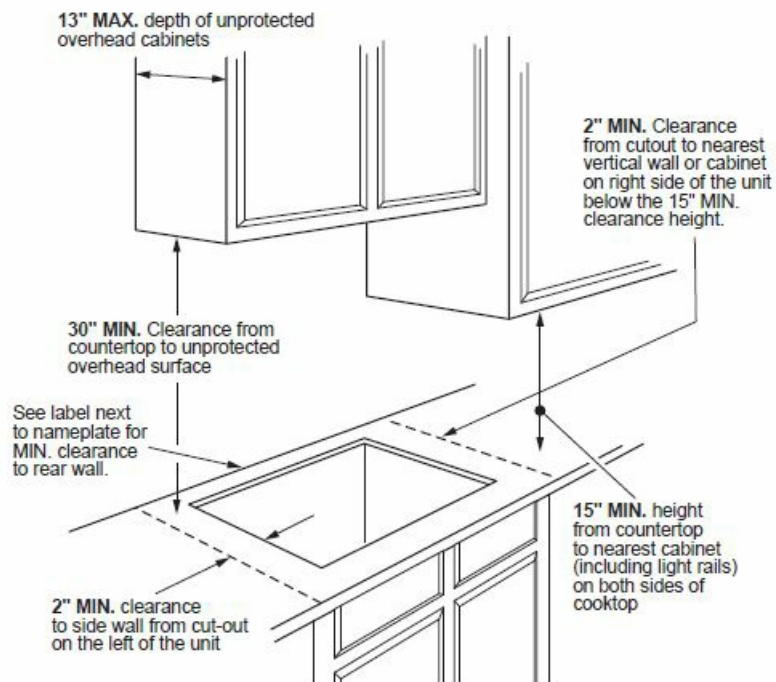


To insure accuracy, it is best to make a template when cutting the opening in the counter

INSTALLATION INFORMATION



For answers to your Monogram, GE Café™, GE Profile™ or GE Appliances product questions, visit our website at geappliances.com or call GE Answer Center® Service, at 800.626.2000.

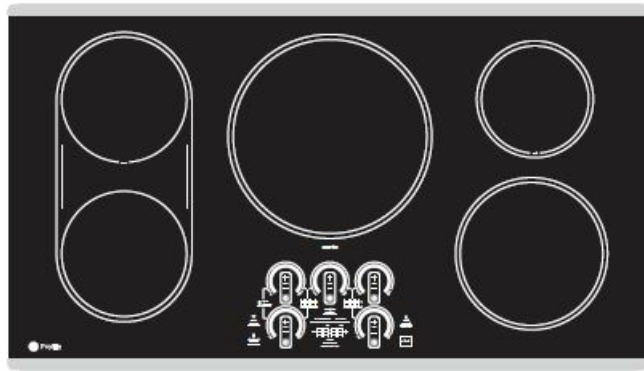


KW RATING	
240V	11.1
208V	9.6
AMPERAGE	
240V	50 Amps†
208V	50 Amps†

NOTE: Check local codes for the required breaker size.

FEATURES AND BENEFITS

- Maximum Responsiveness – 19 Control Levels
- Power Boil
- Precision Temperature Control
- Guided Cooking
- Easy Clean Surface
- Safe Surface
- Most Efficient Heating
- Synchronized Elements
- Chef Connect
- Smart Cookware Rebate for 11" Smart Pan
- Timer
- Built-in WiFi
- Control Lock
- Fit Guarantee
- Model PHP9036STSS – Stainless steel



SMART COOKWARE REBATE

Smart pans easily pair with this smart cooktop to ensure you get the perfect cooking results. Earn a rebate for a free 11" Hestan Cue Smart Pan.

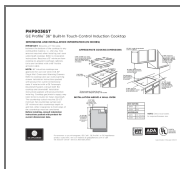
OPTIONAL SOUS VIDE PROBE

A Sous Vide Probe lets you achieve great results on the stove. Order part number JXPROBE1.

GUARANTEED FIT

Replacing a similar cooktop from GE Appliances or another brand? GE cooktops are guaranteed for an exact fit or GE Appliances will pay up to \$100 toward modifications. Visit geappliances.com for more info.

Documents / Resources



[GE PHP9036ST Profile Built In Touch Control Induction Cooktop](#) [pdf] Installation Guide
PHP9036ST Profile Built In Touch Control Induction Cooktop, PHP9036ST, Profile Built In Touch Control Induction Cooktop, Touch Control Induction Cooktop, Control Induction Cooktop, Induction Cooktop

References

- [🌐 GE Appliances: Shop for Home, Kitchen, & Laundry Appliances](#)