



# GE ALB064 Albeo LED Luminaire Retrofit Kit Installation Guide

[Home](#) » [GE](#) » GE ALB064 Albeo LED Luminaire Retrofit Kit Installation Guide 

## Contents

- [1 GE ALB064 Albeo LED Luminaire Retrofit Kit](#)
- [2 BEFORE YOU BEGIN](#)
- [3 LED Retrofit Compatibility](#)
- [4 Tools Required](#)
- [5 Retrofit Kit Includes](#)
- [6 Installation Guide](#)
- [7 Alignment and Final Closure](#)
- [8 Maintenance and Security](#)
- [9 FCC NOTES](#)
- [10 Documents / Resources](#)
  - [10.1 References](#)
- [11 Related Posts](#)

# Albeo®

**GE ALB064 Albeo LED Luminaire Retrofit Kit**



## **BEFORE YOU BEGIN**

Read these instructions completely and carefully. Save these instructions for future use.

### **WARNING**

**RISK OF FIRE OR ELECTRIC SHOCK**

- Turn power off before inspection, installation or removal.
- LED Retrofit Kit installation requires knowledge of luminaires electrical systems. If not qualified, do not attempt installation. Contact a qualified electrician.
- Install this kit only in specified CURRENT mounting covers.
- To prevent wiring damage or abrasion, do not expose wiring to edges of sheet metal or other sharp objects.

### **Save These Instructions**

Use only in the manner intended by the manufacturer. If you have any questions, contact the manufacturer.

## **Prepare Electrical Wiring**

### **Electrical Requirements**

The LED luminaire must be connected to the mains supply according to its ratings on the retrofit kit label.

### **Grounding Instructions**

The grounding and bonding of the overall system shall be done in accordance with National Electric Code (NEC), CEC, and local codes.

## **LED Retrofit Compatibility**

The AH2A LED Luminaire Retrofit Kit will retrofit to CURRENT H2 Filtr-Gard HID luminaires with the following hazardous locations Listed mounting covers:

PENDANT	FLEXIBLE PENDANT	WALL	CEILING	STRAIGHT STANCHION	ANGLE STANCHION	LOW PROFILE
H2000-3P	H2000-3F	H2000-3W	H2000-3C	H2000-5S	H2000-5J	H2000-3L
H2000-4P	H2000-4F	H2000-4W	H2000-4C	H2000-6S	H2000-6J	H2000-4L
H2000-6P						

## Tools Required



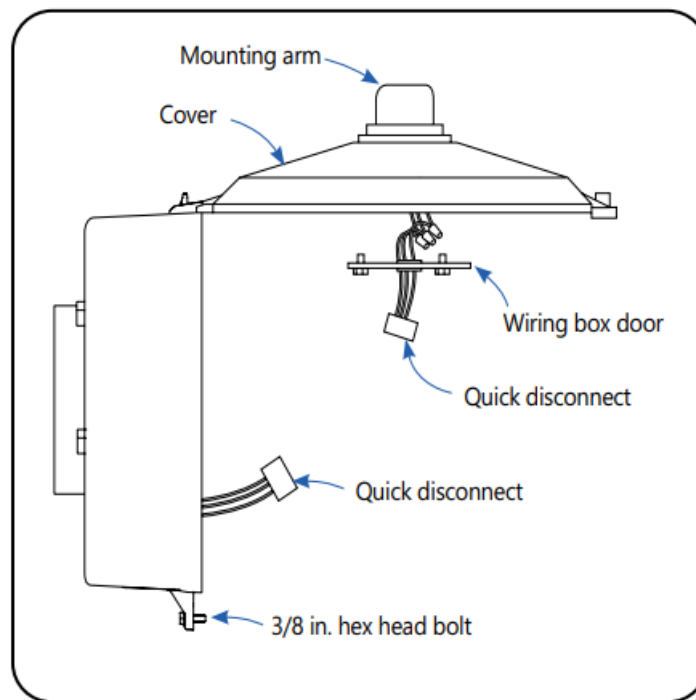
- 3/8 in. hex driver
- 5/16 in. hex driver

## Retrofit Kit Includes

- LED Luminaire Housing with Gasket
- Quick Disconnect Connector (attached to luminaire housing)
- PTFE Tape Kit\*: 93132526
- 3 – 14 in. x 1/2 in.
- 3 – 8 3/8 in. x 1/2 in.

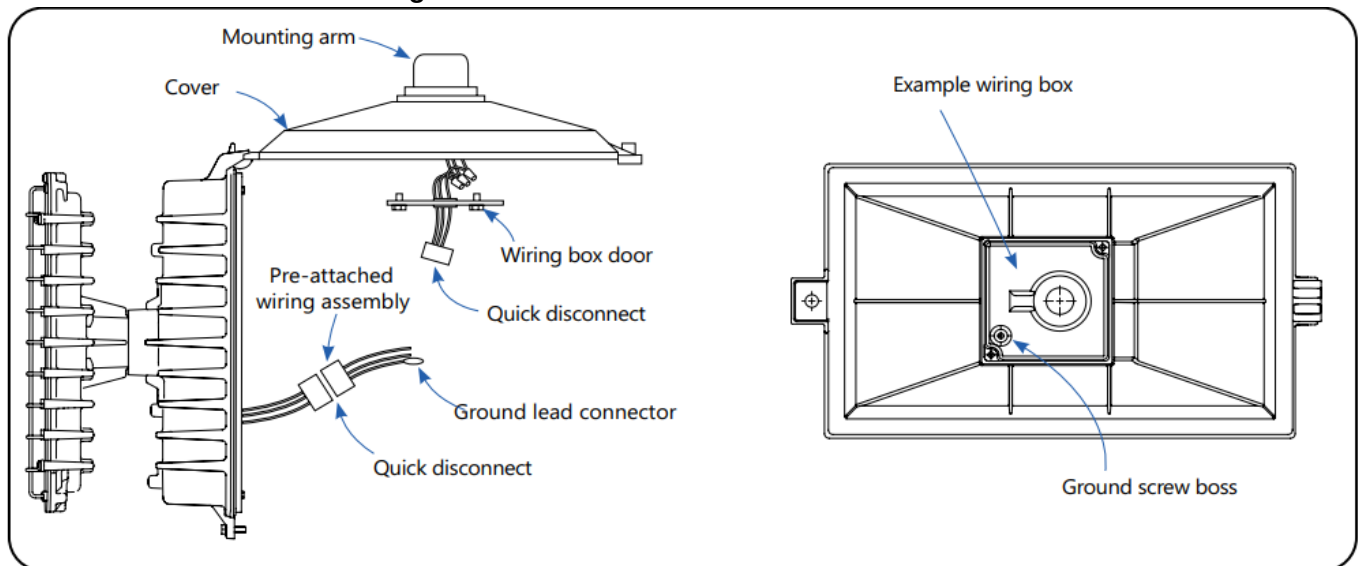
## Installation Guide

### HID / LED Luminaire Fitting Removal



1. With the old luminaire already installed, loosen one (1) captive 3/8 in. hex head bolt on side of ballast housing. Luminaire housing will swing open and hinge as shown above.
2. Disconnect quick disconnect connector.
3. Unhinge unit and discard ballast housing.
4. Inspect mounting cover and wiring assembly for damage before proceeding

### LED Retrofit Installation – Wiring



Separate pre-attached wiring assembly from the luminaire housing. If the connectors in the new luminaire housing and mounting covers are a match, dispose the pre-attached wiring assembly and proceed to Step 8 on next page. If connectors are not matching, follow all steps below:

1. Remove wiring box door by loosening two (2) 5/16 in. hex head bolts.
2. Remove the one (1) 5/16 in. hex head screw connected to the ground wire inside of mounting cover wiring box.
3. Remove the strain relief from the wiring box plate with pliers. Discard existing wiring assembly with the connector and three wires.
4. Route the three wires of the new quick disconnect wiring assembly through wiring box door. Install existing

strain relief in wiring box door with pliers.

5. Attach green ground wire with crimped on closed loop wire connector to terminal on the mounting cover with existing 5/16 in. hex head ground screw.
6. Connect branch circuit leads and field wiring leads inside of the mounting cover wiring box.
7. Re-attach wiring box door and tighten two (2) 5/16 in hex head bolts.

### Wire Colors for Quick Disconnect

**BLACK** -> Live

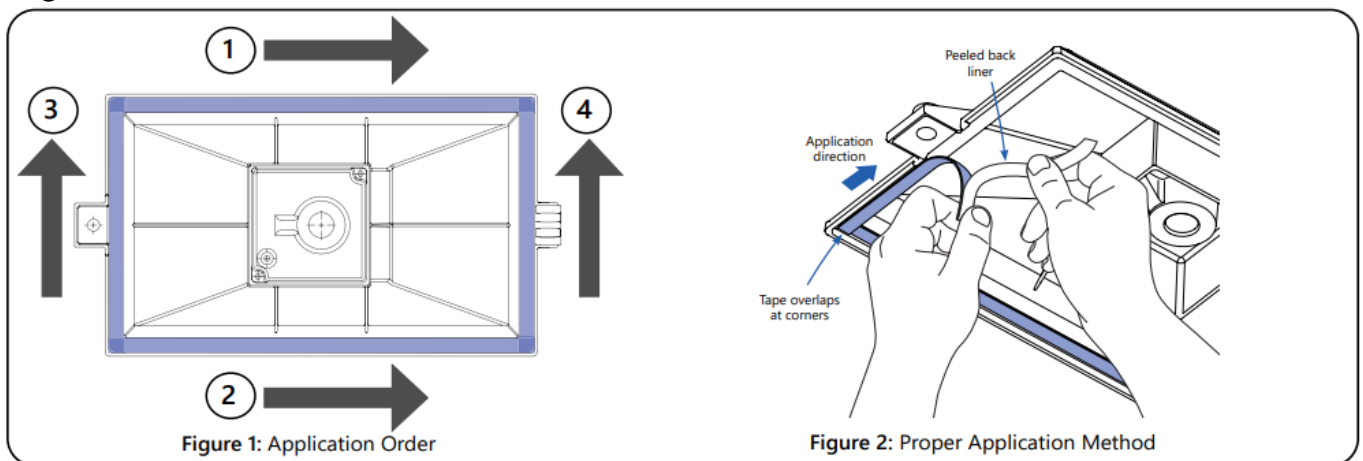
**WHITE** -> Neutral for single phase systems / Live for 2-phase systems

**GREEN** -> Safety Ground

### LED Retrofit Installation

8. For Polycarbonate lens retrofit, proceed to step 11. For Glass lens, Class II Division 1, follow all steps
9. Wipe the gasket interface of the mounting cover clean (blue area in Fig. 1). Ensure it is free of dust and debris.
10. Apply the supplied tape in the following order, starting with a long piece (14") of tape:
  1. Peel the liner back to expose about 2" of tape
  2. Starting at a corner (see application order in Fig.1 above), apply the tape, adhesive side down, along the inside edge of the mounting cover, peeling it slowly off the liner as it is applied to ensure smooth and straight adhesion (Fig. 2).
  3. At corners where tape has already been applied in another direction, ensure that the tape pieces overlap one another (see Fig. 2)
  4. Inspect tape for wrinkles or tears.
    1. If wrinkled, carefully peel back the tape and re-apply.
    2. If torn, remove the tape and re-apply with a new piece. If no more tape is available, please contact Production Support at GE Current.
    3. Repeat steps 10.1 – 10.4 with the remaining edges in the order as described in Fig. 1, using a long piece of tape (14") for side 2, and short pieces (8 3/8") for sides 3 and 4.
11. Hang luminaire housing on hinge on mounting cover.
12. Connect both sides of quick disconnect connector.

### Alignment and Final Closure



**Optical Orientation** – LED reflectors will have arrows indicating the directionality of the light. If the optics are not in the desired orientation, the LED module can be rotated to accommodate.

Loosen two (2) 3/8 in. hex head bolts in electrical cavity indicated by blue circles. Rotate LED module to desired

orientation. Retighten the bolts.

**Final Closure** – Swing unit closed onto mounting cover and install one (1) captive 3/8 in. hex head screw to seal unit closed.

**Note:** Safety chains can be used in mounting hole near captive screw.

## Maintenance and Security

### Maintenance

- Product should not be disassembled during installation process and/or while installed.
- Lens should be cleaned periodically for maximum lumen output.
- Inspect and clear any build-up on cooling fins periodically for maximum

## FCC NOTES

This device complies with Part 15 of the FCC Rules. Operation is subject to the following two conditions: (1) This device may not cause harmful interference, and (2) this device must accept any interference received, including interference that may cause undesired operation. CAN ICES-005 (A) / NMB-005 (A).

**Note:** This equipment has been tested and found to comply with the limits for a Class A digital device, pursuant to part 15 of the

**FCC Rules.** These limits are designed to provide reasonable protection against harmful interference when the equipment is operated in a commercial environment. This equipment generates, uses, and can radiate radio frequency energy and, if not installed and used in accordance with the instruction manual, may cause harmful interference to radio communications. Operation of this equipment in a residential area is likely to cause harmful interference in which case the user will be required to correct the interference at his own expense. The retrofit kit is accepted as a component of a luminaire where the suitability of the combination shall be determined by authorities having jurisdiction. product must be installed by a qualified electrician in accordance with the applicable and appropriate electrical codes. the installation guide does not supersede local or national regulations for electrical installations. Do not make or alter any open holes in an enclosure of wiring or electrical components during kit installation.

**Note:** All configurations are Class II Division 2 groups F & G rated. Only the glass lens option is Class II Division 1 groups E, F, & G rated.

**Note:** Not UL Certified.

© 2020 Current Lighting Solutions, LLC. All rights reserved. GE and the GE monogram are trademarks of the General Electric Company and are used under license. Information provided is subject to change without notice. All values are design or typical values when measured under laboratory conditions.

## Documents / Resources

	<p><a href="#">GE ALB064 Albeo LED Luminaire Retrofit Kit [pdf] Installation Guide</a> ALB064 Albeo LED Luminaire Retrofit Kit, ALB064, Albeo LED, LED, LED Luminaire Retrofit Kit , Luminaire Retrofit Kit, Retrofit Kit, LED Kit</p>
---	--

## References

- [C Commercial Lighting and Lighting Controls | Current - GLI Brands](#)

Manuals+.