



## FS v1.0 Bullet Network Cameras User Guide

[Home](#) » [FS](#) » FS v1.0 Bullet Network Cameras User Guide 

### Contents

- [1 FS v1.0 Bullet Network Cameras](#)
- [2 Introduction](#)
- [3 Accessories](#)
- [4 Hardware Overview](#)
- [5 Installation Requirements](#)
  - [5.1 Precautions](#)
- [6 Installation](#)
- [7 Wall Mounting](#)
- [8 Connecting the Power](#)
- [9 Log in Camera](#)
- [10 Online Resources](#)
- [11 Product Warranty](#)
- [12 Compliance Information](#)
  - [12.1 FCC](#)
- [13 Documents / Resources](#)
- [14 Related Posts](#)

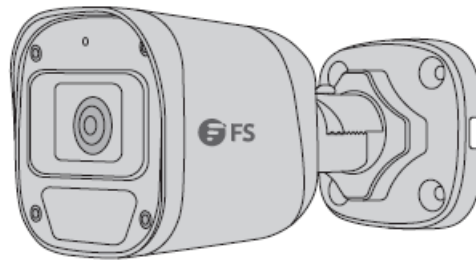


**FS v1.0 Bullet Network Cameras**

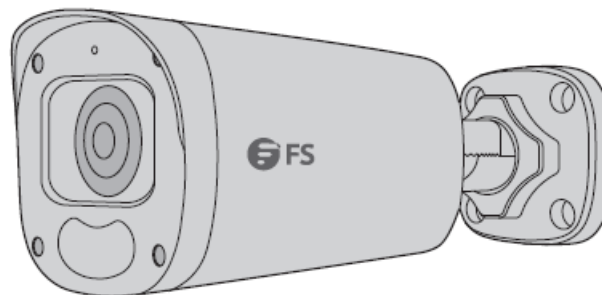


## Introduction

Thank you for choosing the Bullet Network Cameras. This guide is designed to familiarize you with the structure of the cameras and describes how to deploy them in your network.



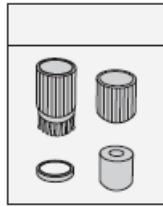
IPC101-2M-B/IPC101-5M-B



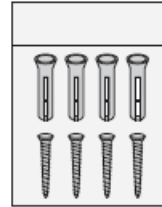
IPC104-2M-B/IPC104-5M-B

## Accessories

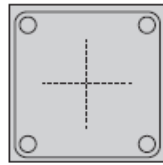
IPC101-2M-B/IPC101-SM-B/IPC104-2M-B/IPC104-SM-B



Waterproof Kit x1



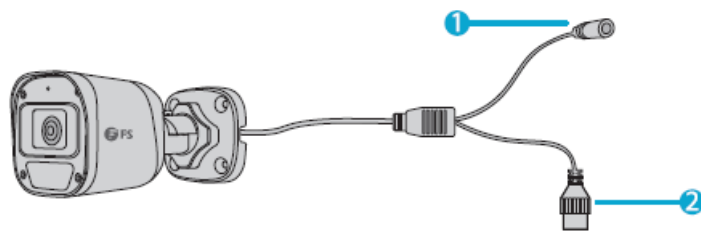
Screw Kit x1



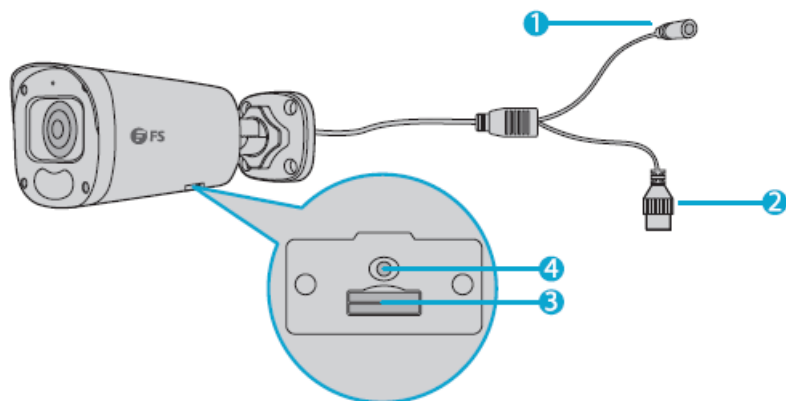
Drill Template Sticker x1

## Hardware Overview

### IPC1 01-2M-B/IPC101-SM-B



### IPC1 04-2M-B/IPC104-SM-B



No.	Name	Description
1	Power Interface	Connect to the DC 12V power
2	Network Interface	Connect to the Ethernet cable
3	Micro SD Card Slot	Insert the Micro SD card (purchased separately) to get local storage
4	Reset Button	Press it for at least 15 seconds to restore the factory default settings. Perform this within 10 minutes after the device is powered on. Otherwise, the reset will fail.

## Installation Requirements

### Precautions

- Make sure the working temperature is maintained at -30°C~60°C, and the relative humidity is ≤95%.
- Keep the camera with good ventilation from excessive pressure, vibration, dust, corrosive gases and intensive electromagnetic radiation.
- Keep the device placed on a flat surface. Unless otherwise specified, do not stack devices.
- Ensure that the cable is not tense. Lengthen the cable between the power adapter and mains if necessary.
- Do not overbend the cables or hold the tail cable by hand for weight bearing.
- The connectors of the tail cable, waterproof box, corrugated pipe and PVC pipe must be fully protected.
- Do not remove the protective film on the cover during mounting. And remove it before the device is powered on.
- Contact professionals for maintenance. Do not dismantle the device by yourself. We shall not assume any responsibility for problems caused by unauthorized repair or maintenance.
- Using the device may involve the collection of personal information such as the face, fingerprint, license plate number, email, phone number, or GPS.

### Maintenance

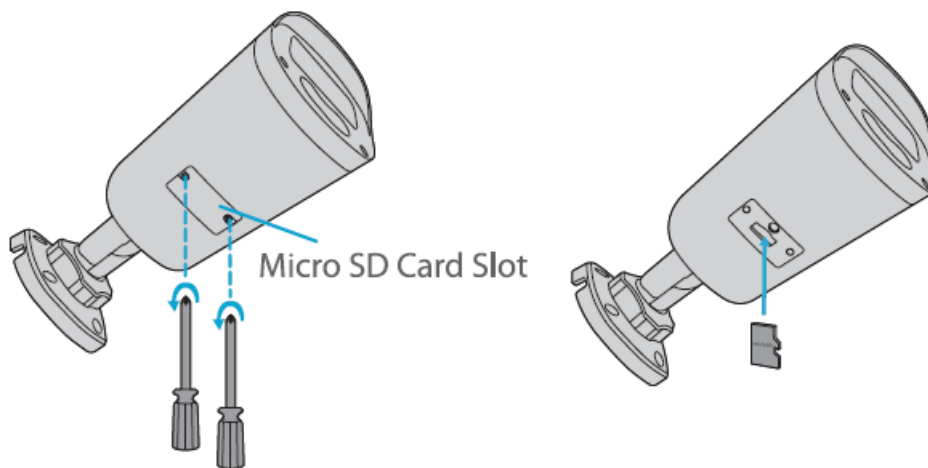
- Remove the dust on the front glass surface gently using an oil-free brush or a rubber dust blowing ball.
- Clean the glass surface gently from the center outward using a lens cleaning cloth. If necessary, use the cloth dipped with detergent.

**CAUTION:** Never look at the laser, fiber ports and cable ends while the power is on.

## Installation

### Installing Micro SD Card (Optional)

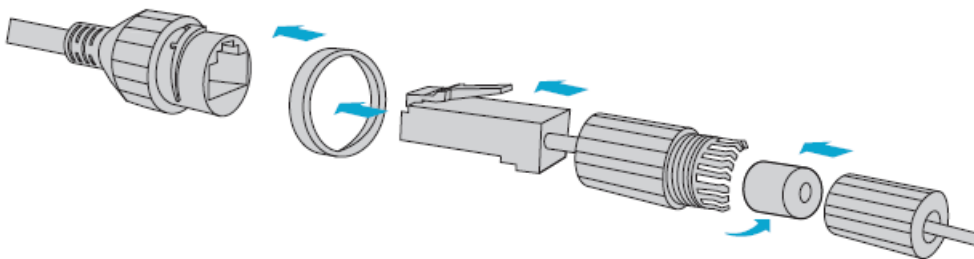
IPCI 04-2M-B/IPC104-SM-B



1. Open the bottom cover by loosening the screws.
2. Insert the Micro SD card (purchased separately) into the camera.

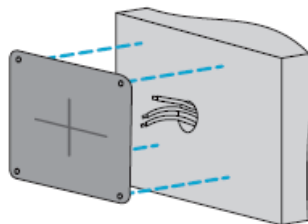
**NOTE:** The Micro SD card doesn't support hot plug operation.

### Installing the Waterproof Kit (Optional)



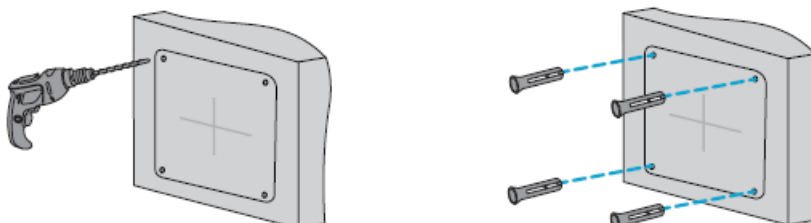
Install the supplied waterproof components to the network cable in sequence.

### Wall Mounting

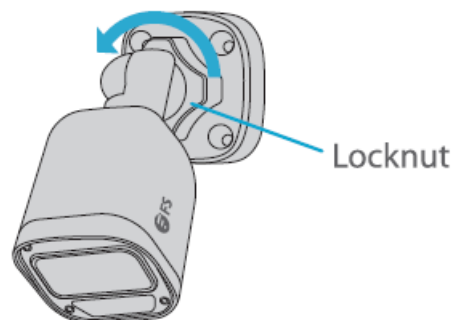


1. Paste the drill template sticker on the wall and align the cross center to the hole. Lead the cables across the hole.

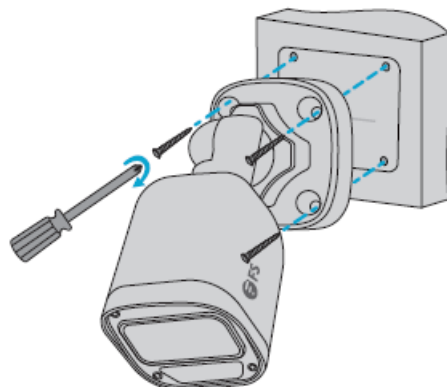
**NOTE:** The ceiling mounting is similar to the wall mounting. The part takes V the latter as an example.



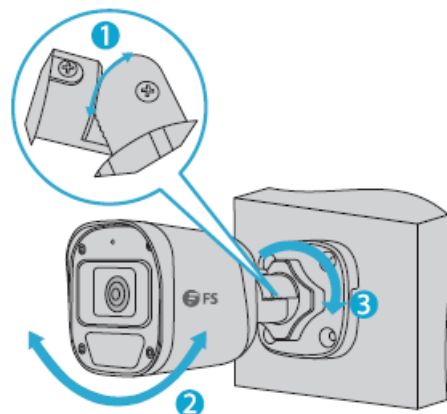
2. Drill 30mm-depth guide holes on the wall with a  $\phi 6.5$ mm drill bit.
3. Knock the wall plugs of supplied self-tapping screws into the guide holes and tighten the plugs.



4. Unscrew the locknut to loosen the universal joint.



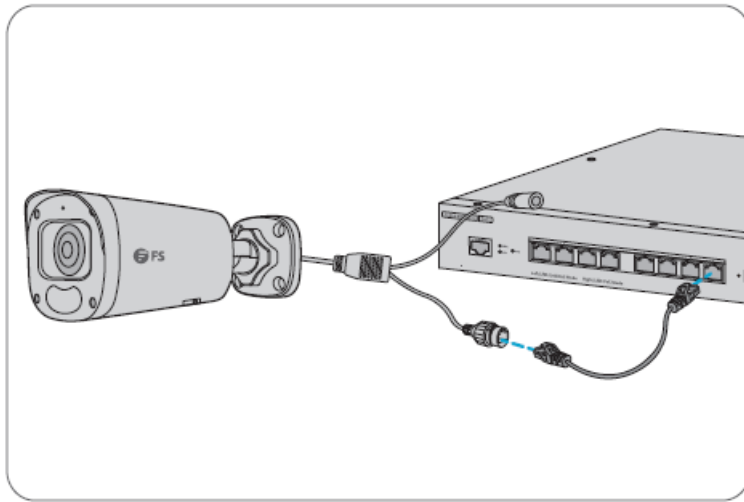
5. Connect the cables. Lead the screws through the guide holes in the base and fix the screws on the wall.



6. Adjust the opening of the universal joints. Rotate the spherical hinge of the camera to get the desired monitoring direction. Tighten the locknut.

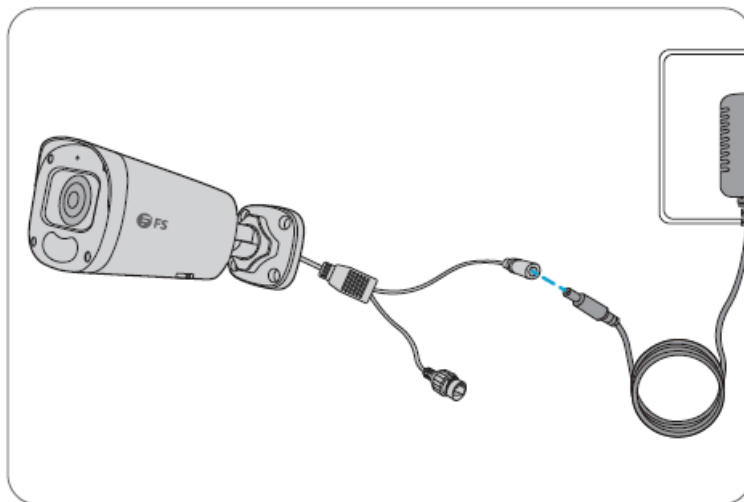
## Connecting the Power

### PoE Device



Use an Ethernet cable to connect the Ethernet interface of the camera to the PoE port on a PoE device, such as a PoE switch or a PoE NVR.

### **Power Adapter**



Connect the power interface of the camera to the local power supply with the power adapter (purchased separately).

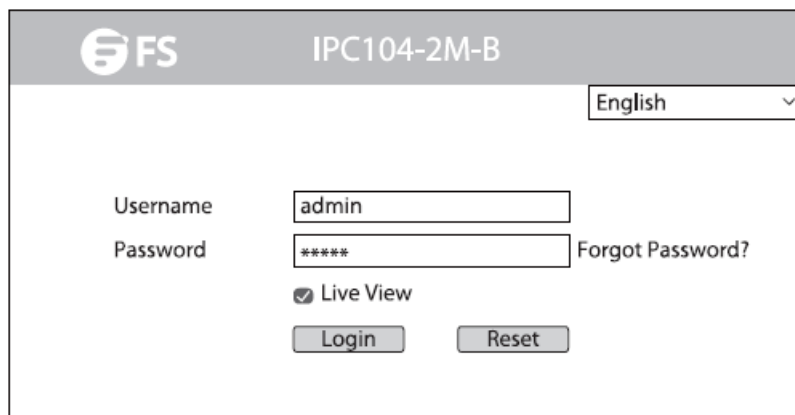
### **Log in Camera**

#### **Before you begin, check that:**

- Your camera is operating properly and connected to the network.
- The PC you are using is installed with Chrome 45 or later.

#### **Follow these steps to log in your camera through the Web:**

1. Open your browser, input the IP address of your camera in the address bar, and then press Enter to open the login page. The default IP is 192.168. 1 .13.
2. Enter the default username and password (admin/admin) and then click login.

The image shows a web-based login interface for the FS IPC104-2M-B device. At the top, there is a header bar with the FS logo on the left and the model number 'IPC104-2M-B' in the center. On the right side of the header, there is a language selection dropdown menu currently set to 'English'. Below the header, the main content area contains a login form. The form has two input fields: 'Username' with the text 'admin' and 'Password' with masked characters '\*\*\*\*\*'. To the right of the password field is a link that says 'Forgot Password?'. Below the password field, there is a checkbox labeled 'Live View' which is checked. At the bottom of the form, there are two buttons: 'Login' and 'Reset'.

#### NOTE:

1. DHCP is enabled by default. If a DHCP server is used in your network, your camera may be assigned an IP address, and you need to use the assigned IP address to log in.
2. You may need to install a plug-in at your first login. Please follow the on-screen instructions to complete the installation and then open the browser again to log in.
3. The default password is intended only for your first login. To ensure security, please change the password after your first login. You are strongly recommended to set a strong password of at least nine characters including all three elements: digits, letters, and special characters.
4. If the password has been changed, please use the new password to log in.

#### Online Resources

- Download [https://www.fs.com/products\\_support.html](https://www.fs.com/products_support.html).
- Help Center [https://www.fs.com/service/fs\\_support.html](https://www.fs.com/service/fs_support.html).
- Contact Us [https://www.fs.com/contact\\_us.html](https://www.fs.com/contact_us.html).

#### Product Warranty

FS ensures our customers that for any damaged or faulty items due to our workmanship, we will offer a free return within 30 days from the day you receive your goods. This excludes any custom-made items or tailored solutions.

- **Warranty:** The products enjoy a 2-year limited warranty against defects in materials or workmanship. For more details about the warranty, please check at <https://www.fs.com/policies/warranty.html>.
- **Return:** If you want to return the item(s), information on how to return can be found at [https://www.fs.com/policies/day\\_return\\_policy.html](https://www.fs.com/policies/day_return_policy.html).

#### Compliance Information

##### FCC

##### Note:

This equipment has been tested and found to comply with the limits for a Class A digital device, pursuant to part 15 of the FCC Rules. These limits are designed to provide reasonable protection against harmful interference when the equipment is operated in a commercial environment. This equipment generates, uses, and can radiate radio frequency energy and, if not installed and used in accordance with the instruction manual, may cause



harmful interference to radio communications. Operation of this equipment in a residential area is likely to cause harmful interference in which case the user will be required to correct the interference at his own expense.

This device complies with part 15 of the FCC Rules. Operation is subject to the following two conditions: (1) This device may not cause harmful interference, and (2) this device must accept any interference received, including interference that may cause undesired operation.

#### **UKCA**

Hereby, FS.COM Innovation Ltd declares that this device is in compliance with Directive 512016 No. 1091 and SI 2016 No. 1101.

#### **FS.COM LIMITED**

24F, enforce Center, No.19, Haitian 2nd Rd, Binhai Community, Yuehai Street Nanshan District, Shenzhen City

#### **FS.COM Innovation Ltd**

4th Floor Imperial House, 8 Kean Street, London, England, WC 2B 4AS.

**FS.COM** GmbH hereby declares that this device is in compliance with the Directive 2014/30/EU and 2014/35/EU. A copy of the EU Declaration of Conformity is available at [www.fs.com/company/quality\\_control.html](http://www.fs.com/company/quality_control.html).

#### **FS.COM LIMITED**

24F, enforce Center, No.19, Haitian 2nd Rd, Binhai Community, Yuehai Street, Nanshan District, Shenzhen City

#### **FS.COM GmbH**

NOVA Gewerbepark Building 7, Am Gfild 7, 85375 Neufahrn bei Munich, Germany.

#### **CAN ICES-003(A)/NMB-003(A)**

This device contains license-exempt transmitter(s)/receiver(s) that comply with Innovation, Science and Economic Development Canada's license-exempt RSS(s). Operation is subject to the following two conditions:

1. This device may not cause interference.
2. This device must accept any interference, including interference that may cause undesired operation of the device.

The digital apparatus complies with Canadian CAN ICES-3 (A)/NMB-3(A).

Copyright e 2023 FS.COM All Rights Reserved.



BULLET NETWORK CAMERAS  
BULLET NETWORK CAMERAS  
CAMÉRA RÉSEAU BULLET  
Quick Start Guide   
Quick Start Guide  
Guide de démarrage rapide

[FS v1.0 Bullet Network Cameras](#) [pdf] User Guide  
v1.0 Bullet Network Cameras, v1.0, Bullet Network Cameras, Network Cameras, Cameras