



FS S5800 Series Switches Enable Web Management Configuration User Guide

[Home](#) » [FS](#) » FS S5800 Series Switches Enable Web Management Configuration User Guide 

Contents

- [1 FS S5800 Series Switches Enable Web Management Configuration](#)
- [2 Configuration Steps](#)
- [3 Documents / Resources](#)
 - [3.1 References](#)



FS S5800 Series Switches Enable Web Management Configuration



S5800 SERIES SWITCHES ENABLE WEB MANAGEMENT CONFIGURATION GUIDE

The S5800 Series Switches Enable Web Management Configuration Guide provides step-by-step instructions on how to turn on the relevant content of the Web and is only available for Web management with version numbers V7.2.4.r1 or V5.3.10 and below.

Models:

- S5800-8TF12S
- S5800-48T4S
- S5800-48F4SR

Configuration Steps

1. Connection equipment

Connect your PC and S5850-48T4Q switch to the network according to the way of networking topo. One end of the RJ-45 cable should be connected to the PC's network port, and the other end should be connected to the Manage interface of S5850-48T4Q. At the same time, one end of console line USB should be connected to PC's USB interface, and the other end of RJ-45 connector should be connected to console interface of front panel of switch.

According to the way of networking topo to connect PC and S5850-48T4Q switch to network. One end of the RJ-45 cable is connected to the PC's network port, and the other end is connected to the Manage interface of S5850-48T4Q. At the same time, one end of console line USB is connected to PC's USB interface, and the other end of RJ-45 connector is connected to console interface of front panel of switch.

2. Download related software

Search and install SecureCRT debugging software and Tftpd32 file transfer software through Google.

3. Configure software parameters

1. Energize the switch.
2. Right-click "My Computer" on PC and click "Management" to view the com port corresponding to console cable from device manager. (If it displays an unrecognized USB device, please download and install the corresponding driver).
3. Open SecureCRT, select the serial login mode, and select the serial number from the device manager. Baud rate is 115200, no flow control is selected. As the picture shows.



4. After a successful connection, tap the Enter key on the keyboard to jump out of the prompt to enter the account password.
5. Enter the default username and password admin/admin to log in to the switch.
6. Use "cd flash:/" command to see if a Web Image file exists in the system directory of the switch. As the picture shows, if this file exists, skip to Step 7.

4. Login switch

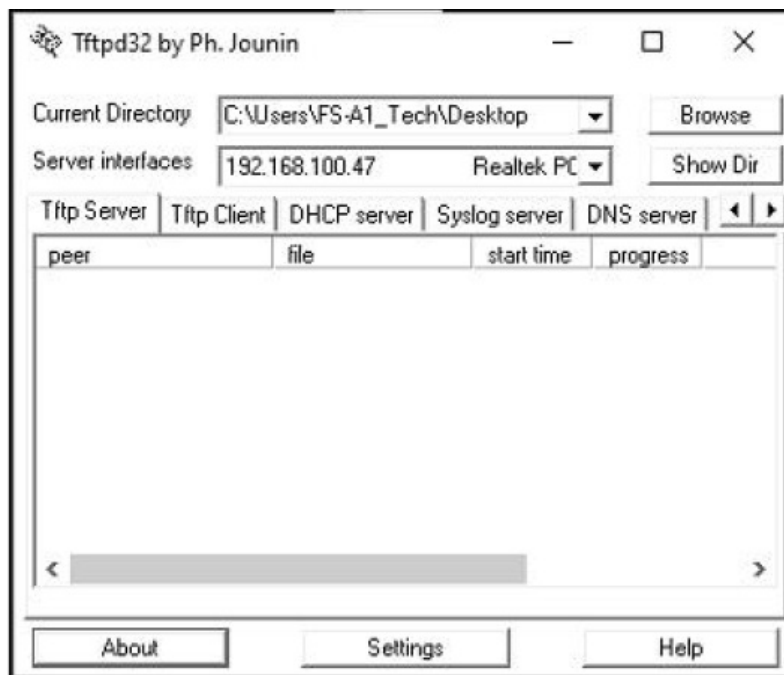
After a successful connection, tapping the Enter key on the keyboard will jump out of the prompt to enter the account password. At this point, enter the default user name and password admin/admin, you can log in to the switch. Then use cd flash:/? command to see if a Web Image file exists in the system directory of the switch.

As the picture shows, if this file exists, skip to Step 7.

```
S5850-48T4Q# cd flash/?
flash:/log                               Directory
flash:/startup-config.conf               File
flash:/boot                             Directory
flash:/cold                             Directory
flash:/conf                             Directory
flash:/info                             Directory
flash:/syslogfile                        Directory
flash:/dhcp Snooping                    File
flash:/ldp.pcap                          File
flash:/factory-config.bin                File
flash:/mirror                           Directory
flash:/sys-diag                          Directory
flash:/reboot-info                       Directory
flash:/startup-config.config.backup      File
flash:/0102-config                       File
flash:/syslog                            File
flash:/ldp.pcap                          File
flash:/001E080D0F65.4.lic               File
flash:/monitor                           Directory
```

5. Configure Tftpd32 software

Open Tftpd32 software and set Server interfaces as the local IP address of the computer. Current Directory fills in the file path where the upgrade package is located. As the picture shows.



6. Download Web Image

Through Tftpd32 software, download Web Image to the root directory of the switch, flash:/ . S5850-48T4Q# copy mgmt-if tftp://192.168.100.47/ FSOS-weblmage-v7.2.3.bin flash:/

7. Configuration switch management IP

Configure management IP for Management interface of switch under CLI interface:

```
S5850-48T4Q# configure terminal
```

```
S5850-48T4Q(config)# management ip address 192.168.100.6/24
```

```
S5850-48T4Q(config)# management route add gateway 192.168.100.1
```

```
S5850-48T4Q(config)#exit
```

8. Enable Http services

```
S5850-48T4Q# configure terminal
```

```
S5850-48T4Q(config)# http server load flash:/FSOS-weblmage-v7.2.3.bin
```

```
S5850-48T4Q(config)# service http enable
```

9. Enter Web interface

After completing all the above steps, you can enter the Web interface of the switch to manage and configure it. Enter the Administrator IP address:192.168.100.6 in the URL bar of Google Browser, then enter the default username and password admin/admin.As the picture shows.

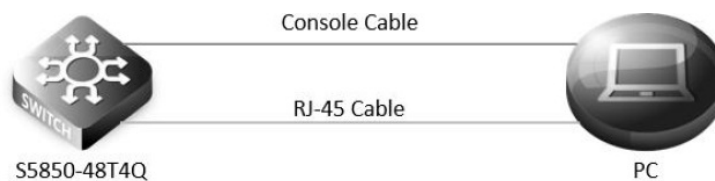


NOTE: Recommended use of the latest version of Web Image files.

Introduction

This document explains in detail how to turn on the relevant content of the Web, and it is only available for Web management with version numbers V7.2.4.r1 or V5.3.10 and below.

Topology



Documents / Resources

	<p>FS S5800 Series Switches Enable Web Management Configuration [pdf] User Guide S5800-8TF12S, S5800-48T4S, S5800-48F4SR, S5800 Series Switches Enable Web Management Configuration, S5800 Series, Switches Enable Web Management Configuration</p>
--	---

References

- [FS.com - Data Center, Enterprise, Telecom](#)