



FS S5500 Series Switches Software User Guide

[Home](#) » [FS](#) » FS S5500 Series Switches Software User Guide 

Contents

- [1 FS S5500 Series Switches Software](#)
- [2 Product Information](#)
- [3 Product Usage Instructions](#)
- [4 CLI Upgrade](#)
- [5 Web Upgrade](#)
- [6 Introduction to Version Upgrade](#)
- [7 Documents / Resources](#)
 - [7.1 References](#)



FS S5500 Series Switches Software



Product Information

The S5800/S8050/S5850 Series Switches are high-performance Ethernet switches designed for data center networks. These switches offer a range of advanced features including high-speed connectivity, low latency, and high reliability, making them ideal for mission-critical applications. The switches come in different models including S3150-8T2FP, S3260-8T2FP, S3260-16T4FP, S3400-24T4FP, S3400-48T4SP, S3700-24T4F, S3900-24T4S-R, S3900-24F4S-R, S3900-48T6S-R, S5500-48T6SP-R and S5500-48T8SP.

Product Usage Instructions

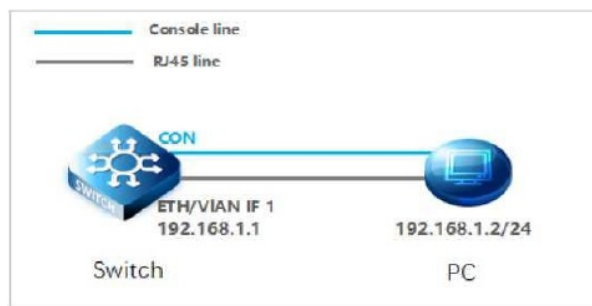
When new features are added or the original performance needs to be optimized and the current running version is out of date, the device needs to be upgraded. In such cases, you need to load a high version of the system software, upgrade through the CLI interface, WEB interface, and restart the device.

CLI Upgrade

Follow the below steps to upgrade the software using CLI:

1. Connect your PC to the switch using a console cable.
2. Configure the IP address of the terminal emulation software on your PC.
3. Configure the switch's IP address.
4. Login to the switch using the default username and password: admin/admin.
5. Open the installed TFTP upload software and specify the server root directory in its options.
6. Put the files to be uploaded into this directory.
7. Upgrade the image switch by copying the TFTP file to the flash using the command: copy tftp: flash: Source file name[S3900-48T6S-R-Switch-2.2.0E-97109-08018.bin Remote-server ip address[192.168.1.2 Destination file name[Switch.bin](Just type enter)
8. If it is a stack switch group upgrade, you need to use the command update switch to synchronize the firmware to the member switches of the stack group before proceeding to the next step.

Network Topology



PC connection switch page

Configuration Steps

1. connection Equipment

#Connect the PC and the switch to the network cable and the console port. Connect one end of the RJ-45 network cable to the network card interface of the PC and the other end to the network port of the SW. Connect one end of the console cable USB to the USB port of the PC. One end of the RJ-45 is connected to the console port on the front panel of the switch.

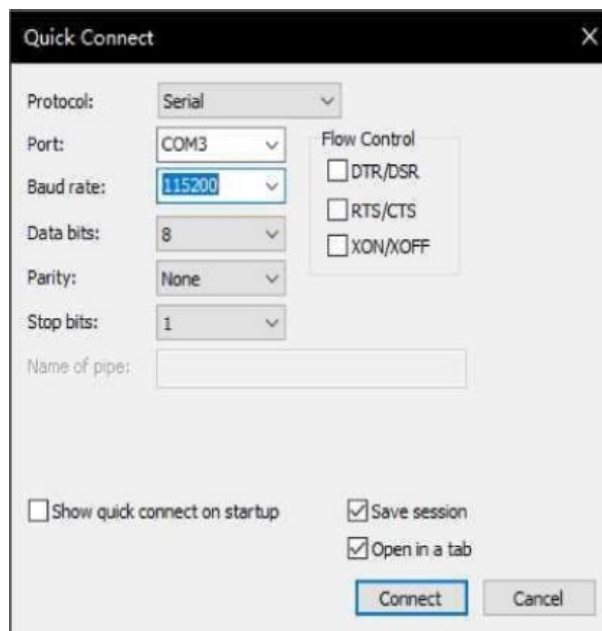
2. Download Configuration Software

After the connection is completed, there we recommend the super terminal, putty or Secure CRT tool to configure the switch.

3. Switch on and Use Login Software

#Energizing the switch, then open the installed login software, select the serial port of login mode, port through the device manager to determine. Baud rate :115200, Data bits: 8, Parity: None, Stop bits: 1. (Reference below)

NOTE: COM Number can be viewed through device manager. (right click on my computer.>manage>device manager>port (COM and LPT) If it displays an unrecognized USB device, please download and install the corresponding driver.



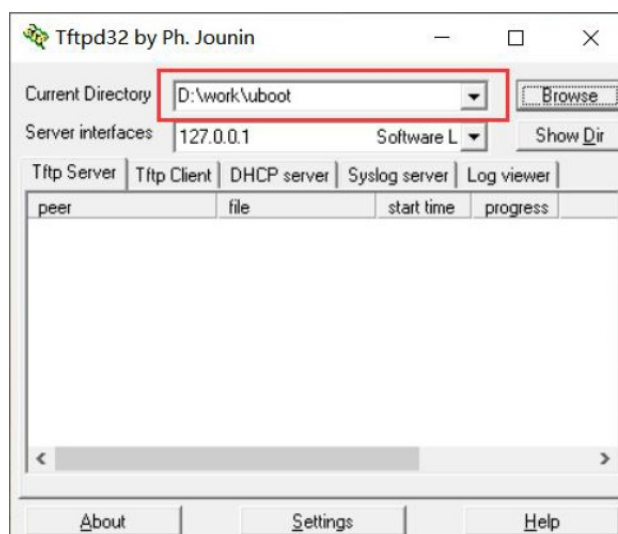
Login cli configuration page

4. Login Switch

After completing the above steps, hitting the Enter key of the keyboard will prompt you to enter the account password. At this time, enter the default username and password admin/admin to log in to the switch.

5. Upgrade Software

After logging in to the switch, open the installed TFTP upload software, specify the server root directory in its options, and put the files to be uploaded into this directory.



TFTP server configuration page

6. Upgrade Image

Switch# copy tftp: flash:

Source file name[?]S3900-48T6S-R-Switch-2.2.0E-97109-08018.bin Remote-server ip address[?]192.168.1.2

Destination file name[Switch.bin]?(Just type enter)

NOTE: If it is a stack switch group upgrade, you need to use the command “update switch” to synchronize the firmware to the member switches of the stack group before proceeding to the next step.

7. Reboot the device

Switch#reboot

Do you want to reboot the Switch(y/n)?y

8. Upgrade web Software Version

Switch# copy tftp:web-v2.2.0.wrp flash:web.wrp 192.168.1.2

9. Enable web services

```
Switch#config
```

```
Switch_config# no ip http server
```

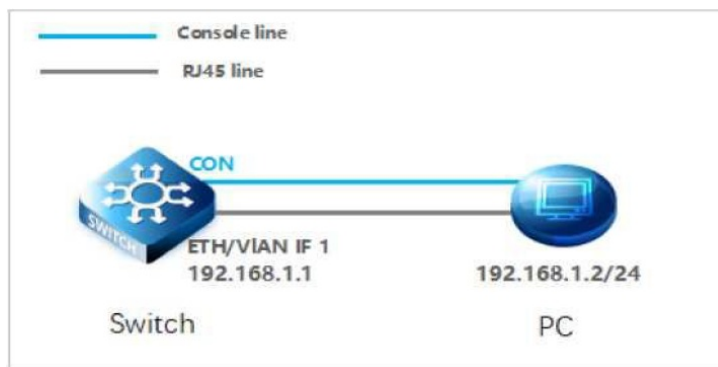
```
Switch_config# ip http server
```

Web Upgrade

Follow the below steps to upgrade the software using web:

1. Connect your PC to the switch using a web browser.
2. Login to the switch using the default username and password: admin/admin.
3. Click on System Maintenance > Firmware Management > Upgrade Firmware.
4. Select the firmware file and click on Upgrade.
5. The switch will reboot after the upgrade process is complete.

Network Topology



PC connection switch page

Configuration Steps

1. Login WEB

#Enter the IP address of the management interface in the URL field of the browser, and then enter the default username and password: admin/admin

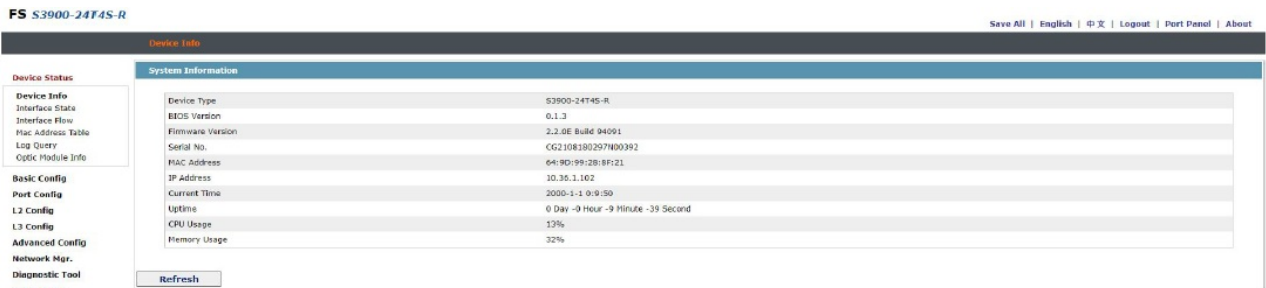
FS S3900-24T4S-R

Username *

Password *

Login web page

After successful login, the monitor page will appear , as shown



2. Upgrade Image

After entering the WEB interface of the switch, click “System Mgr. > System Software” to select the Image file to be upgraded on web. During the upgrade process, do not close the upgrade page and power off the device.



Upgrade Image page

Note: The device web supports only the image upgrade. Currently, the device does not support the upgrade of the web software version

Introduction to Version Upgrade

When new features are added or the original performance needs to be optimized and the current running version is out of date, the device needs to be upgraded. In this case, you need to load a high version of the system software, upgrade through the CLI interface, WEB interface, and restart the device.

Documents / Resources

FS S5500 Series Switches Software [pdf] User Guide

S3150-8T2FP, S3260-8T2FP, S3260-16T4FP, S3400-24T4FP, S3400-48T4SP, S3700-24T4F, S3900-24T4S-R, S3900-24F4S-R, S3900-48T6S-R, S5500-48T6SP-R, S5500-48T8SP, S5500 Series Switches Software, Switches Software, Software

References

- [FS.com - Data Center, Enterprise, Telecom](#)
- [FS.com - Data Center, Enterprise, Telecom](#)