

# FS S3950 Series Switches Enable Web Management Configuration User Guide

[Home](#) » [FS](#) » FS S3950 Series Switches Enable Web Management Configuration User Guide 

## Contents

- [1 FS S3950 Series Switches Enable Web Management Configuration](#)
- [2 Product Information](#)
- [3 Product Usage Instructions](#)
- [4 Product Configuration Steps](#)
- [5 Introduction](#)
- [6 Topology](#)
- [7 Configuration Steps](#)
- [8 Documents / Resources](#)
  - [8.1 References](#)
- [9 Related Posts](#)



**FS S3950 Series Switches Enable Web Management Configuration**

S3950-4T12S					
<div>Monitor</div> <div>Configuration</div> <div>Maintenance</div> <div>Network</div> <div>Save</div> <div>admin</div> <div>Logout</div>					
<div>Ethernet Status</div> <div>Ethernet Stats</div>					
<div>Ethernet Stats</div> <div>Clear Stats</div> <div>Refresh</div>					
Interface Name	Output Packets	Output Bytes	Input Packets	Input Bytes	Operation
eth-0-1	0	0	0	0	<a href="#">Edit</a>
eth-0-2	0	0	0	0	<a href="#">Edit</a>
eth-0-3	0	0	0	0	<a href="#">Edit</a>
eth-0-4	0	0	0	0	<a href="#">Edit</a>
eth-0-5	0	0	0	0	<a href="#">Edit</a>
eth-0-6	0	0	0	0	<a href="#">Edit</a>
eth-0-7	0	0	0	0	<a href="#">Edit</a>
eth-0-8	0	0	0	0	<a href="#">Edit</a>
eth-0-9	0	0	0	0	<a href="#">Edit</a>
eth-0-10	0	0	0	0	<a href="#">Edit</a>
eth-0-11	0	0	0	0	<a href="#">Edit</a>
eth-0-12	0	0	0	0	<a href="#">Edit</a>
eth-0-13	0	0	0	0	<a href="#">Edit</a>
eth-0-14	0	0	0	0	<a href="#">Edit</a>
eth-0-15	0	0	0	0	<a href="#">Edit</a>

## Product Information

### S3950&S5800&S5850&S8050 Series Switches

- The S3950&S5800&S5850&S8050 Series Switches are a range of network switches that enable web management configuration.
- They are available in multiple models, including the S5850-48T4Q, S5850-48S6Q, S5850-32S2Q, S585048S2Q4C, S8050-20Q4C, and more.

## Product Usage Instructions

### Introduction

- This document provides instructions on how to turn on the relevant content of the web for web management with version numbers V7.4.3.r3 and below.

### Topology

- Refer to the network topology diagram for guidance.

## Product Configuration Steps

1. **Login switch:** After a successful connection, enter the default user name and password admin/admin to log in to the switch.
2. **Check for Weblmage file:** Use the command `cd flash:/?` to see if a Weblmage file exists in the system directory of the switch. If this file exists, skip to step 7.
3. **Configure Tftpd32 software:** Open Tftpd32 software and set Server interfaces as the local IP address of the computer. Fill in the Current Directory field with the file path where the upgrade package is located.
4. **Download Weblmage:** Use Tftpd32 software to download Weblmage to the root directory of the switch,

flash:/.

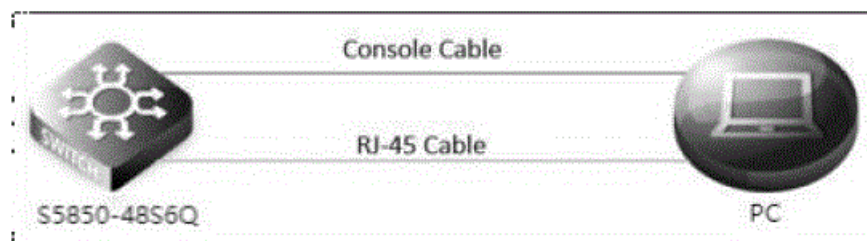
5. **Configure switch management IP:** Configure management IP for Management interface of switch under CLI interface.
6. **Enable Http services:** Enable Http services and load the WebImage file.
7. **Enter Web interface:** Enter the Administrator IP address in the URL bar of Google Browser, then enter the default username and password admin/admin.

**Note:** It is recommended to use the latest version of WebImage files.

## Introduction

- This document explains in detail how to turn on the relevant content of the Web, and it is only available for Web management with version numbers V7.4.3.r3 and below.

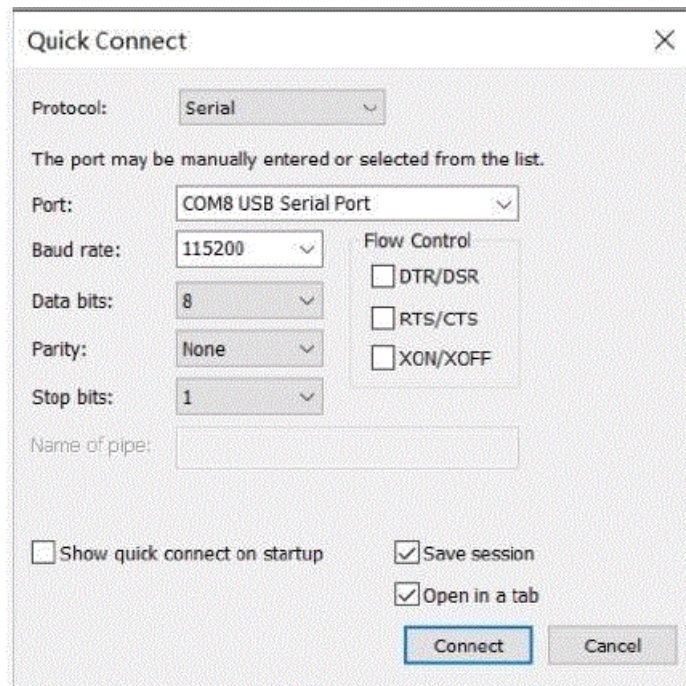
## Topology



## Configuration Steps

1. Connection equipment
  - According to the way of networking topo to connect PC and S5850-48S6Q switch to network. One end of the RJ-45 cable is connected to the PC's network port, and the other end is connected to the Manage interface of S5850-48S6Q.
  - At the same time, one end of console line USB is connected to PC's USB interface, and the other end of RJ-45 connector is connected to console interface of front panel of switch.
2. Download related software
  - Search and install SecureCRT debugging software and Tftpd32 file transfer software through Google.
3. Configure software parameters





- Energizing the switch. Then right-click “my computer” on PC, click management, and view the com port corresponding to console cable from device manager. (If it display an unrecognized USB device, please download and install the corresponding driver). Then open SecureCRT, select the serial login mode, and select the serial number from the device manager. Baud rate is 115200, no flow control is selected. As the picture shows.

#### 4. Login switch

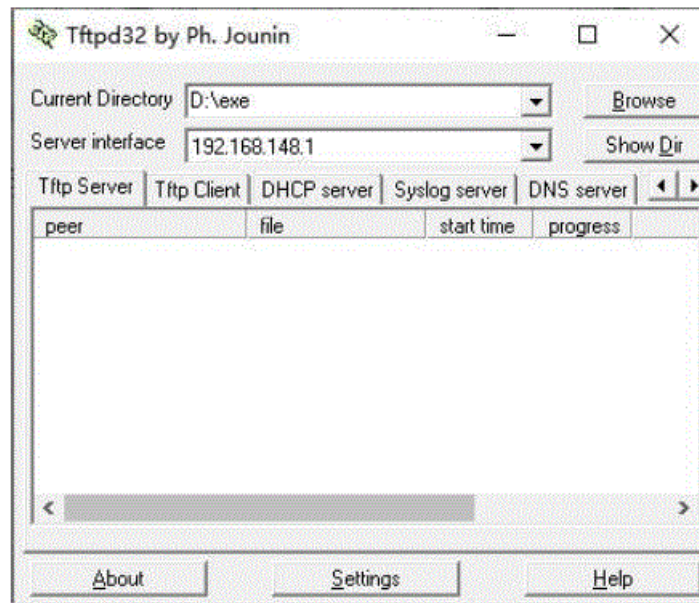
```
S5850-48S6Q# cd flash:/?
flash:/log                               Directory
flash:/startup-config.conf               File
flash:/boot                             Directory
flash:/cold                             Directory
flash:/conf                             Directory
flash:/info                             Directory
flash:/syslogfile                        Directory
flash:/dhcpsnooping                     File
flash:/ldp3.pcap                         File
flash:/factory-config.bin                File
flash:/mirror                            Directory
flash:/sys-diag                          Directory
flash:/reboot-info                       Directory
flash:/startup-config.config.backup      File
flash:/O102-config                       File
flash:/syslog                            File
flash:/ldp.pcap                           File
flash:/001E080D0F65.4.lic                File
flash:/monitor                           Directory
```

- After a successful connection, tapping the Enter key on the keyboard will jump out of the prompt to enter the account password. At this point, enter the default user name and password admin/admin, you can log in to the switch. Then use cd flash:/? command to see if a WebImage file exists in the system directory of



the switch. As the picture shows, if this file exists, skip to Step 7.

#### 5. Configure Tftpd32 software



- Open Tftpd32 software and set Server interfaces as the local IP address of the computer. Current Directory fills in the file path where the upgrade package is located. As the picture shows.

#### 6. Download WebImage

- Through Tftpd32 software, download WebImage to the root directory of the switch, flash:/.
- S5850-48S6Q# copy mgmt-if tftp://192.168.148.1/ FSOS-webImage-v7.4.3.bin flash:/
- **Note:** The webImage version downloaded for S3950-4T12S and S5800-8TF12S is v5.3.11.
- S3950-4T12S# copy mgmt-if tftp://192.168.148.1/ FSOS-webImage-v5.3.12.bin flash:/

#### 7. Configuration switch management IP

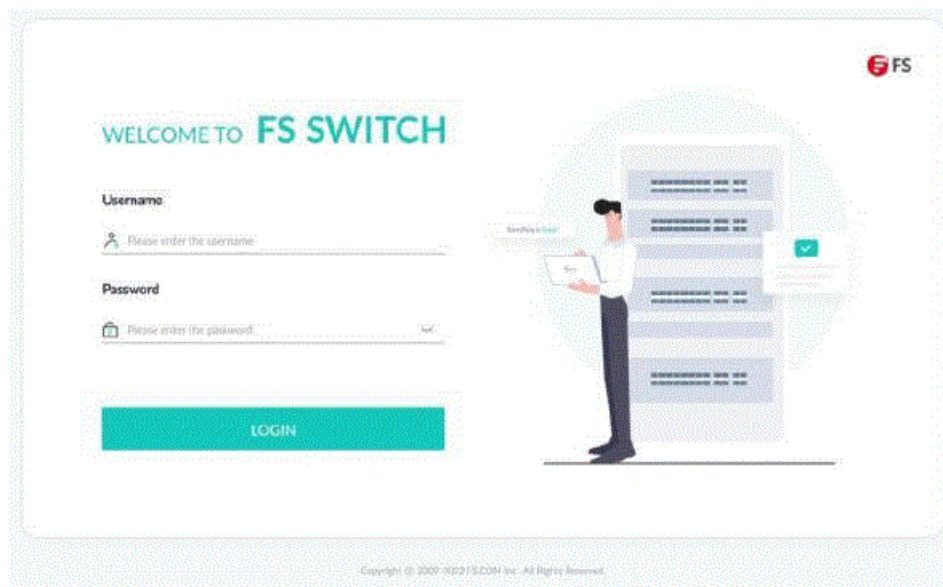
##### 1. Configuration management IP for Management interface of switch under CLI interface

- S5850-48S6Q# configure terminal
- S5850-48S6Q(config)# management ip address 192. 168.100.6/24
- S5850-48S6Q(config)# management route add gateway 192.168.100.1
- S5850-48S6Q(config)#exit

#### 8. Enable Http services

- S5850-48S6Q# configure terminal
- S5850-48S6Q(config)# http server load flash:/FSOS-webImage-v7.4.3.bin
- S5850-48S6Q(config)# service http enable
- **Note:** The webImage version downloaded for S3950-4T12S and S5800-8TF12S is v5.3.12.
- S3950-4T12S# configure terminal
- S3950-4T12S(config)# http server load flash:/FSOS-webImage-v5.3.12.bin
- S3950-4T12S(config)# service http enable

#### 9. Enter Web interface




- **Enter the Administrator IP address:** 192.168.100.6 in the URL bar of Google Browser, then enter the default username and password admin/admin. As the picture shows.

**NOTE:** Recommended use of the latest version of WebImage files.

[www.fs.com](http://www.fs.com)

## Documents / Resources

	<p><b><a href="#">FS S3950 Series Switches Enable Web Management Configuration</a></b> [pdf] User Guide  S3950 Series, S5800 Series, S5850 Series, S8050 Series, S8550 Series, S5850-48T4Q, S5850-48S6Q, S5850-32S2Q, S5850-48S2Q4C, S8050-20Q4C, S5850-24T16S, S5850-24T16B, S5800-48F4SR, S5800-48T4S, S5850-24S2Q, S5850-24S2C, S5800-8TF12S, S3950-4T12S, S5850-24XMG, S5850-24XMGU, S8550-6Q2C, S5800-48MBQ, S5850-48T4Q-PE, S3950 Series Switches Enable Web Management Configuration, Switches Enable Web Management Configuration</p>
---	---

## References

- [FS.com - Data Center, Enterprise, Telecom](#)
- [FS.com - Data Center, Enterprise, Telecom](#)

Manuals+