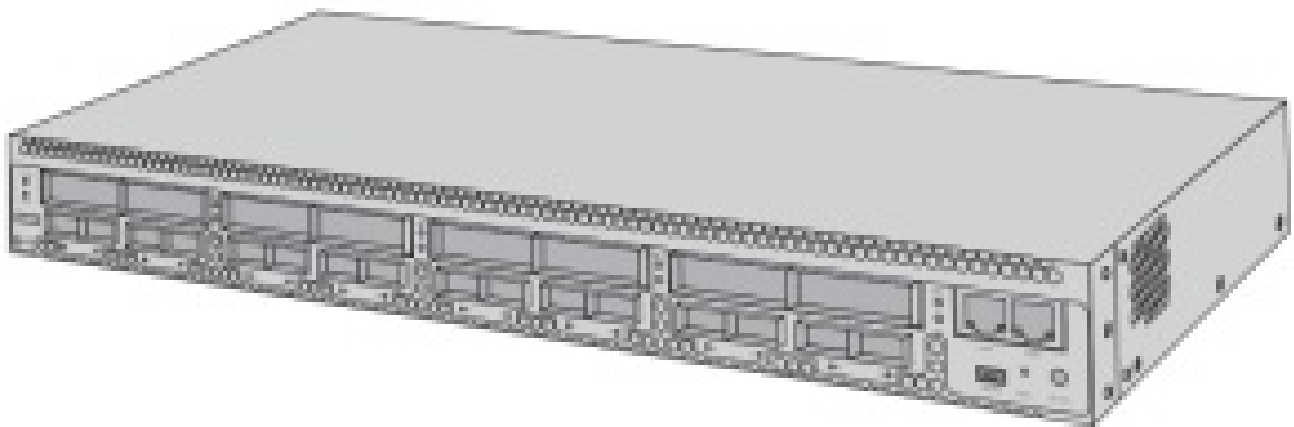




## FS M6800 Series OTN Transmission Platform User Guide

[Home](#) » [FS](#) » FS M6800 Series OTN Transmission Platform User Guide 



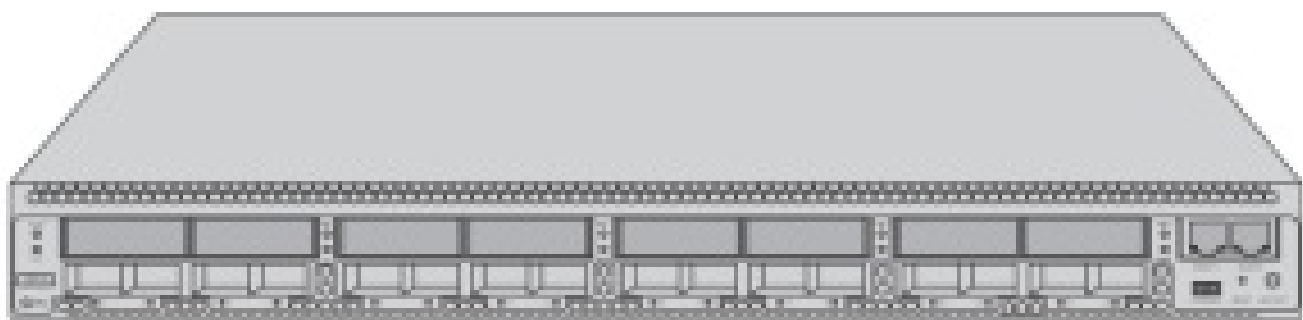
**M Series**  
**M6800 SERIES OTN PLATFORM**  
**Quick Start Guide**  
**V1.0**

**Contents**

- [1 Introduction](#)
- [2 Accessories](#)
- [3 Hardware Overview](#)
- [4 Site Environment](#)
- [5 Installing](#)
- [6 Connecting Power Cord](#)
- [7 Configuring the M Series Platform](#)
- [8 Troubleshooting](#)
- [9 Online Resources](#)
- [10 Product Warranty](#)
- [11 Documents / Resources](#)
- [12 Related Posts](#)


**Introduction**

M6800-TSP16 is an OTN transmission platform customized for Data Center Interconnect (DCI) applications. It's up to eight single wavelengths 200G channels, with 8x 200G CFP2 coherent optics uplinks on the line side, and 16x 100G QSFP28 on the client-side.



M6800-TSP16

**Accessories**

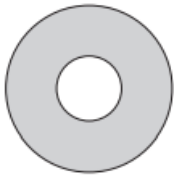
	Power Cord x2
---	---------------



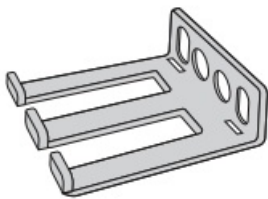
Console Cable x1



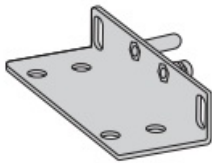
Ethernet Cable x1



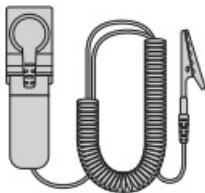
CD x1



Cable Manager x1





Mounting Bracket x2



ESD Wrist Strap x1

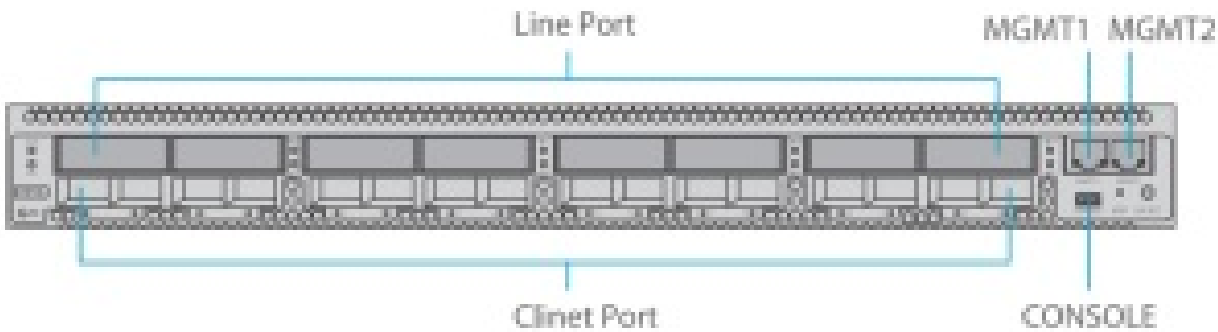


Grounding Cable x1

	M6 Screw Set x4
	M4 Screw x8

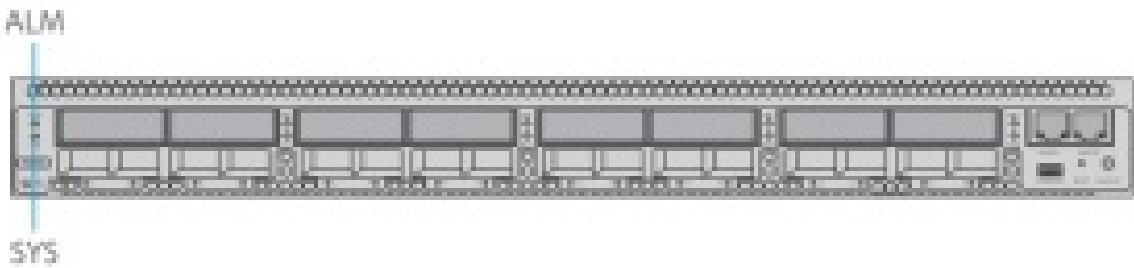
Hardware Overview

Front Panel Ports



Port	Port Type	Description
Client Port	QSFP28	Support 16x 100G QSFP28
Line Port	CFP2	Support 8x coherent
MGMT1-2	RJ45 ETH	Connect to the local network
CONSOLE	Micro USB	Debugging & Upgrading port

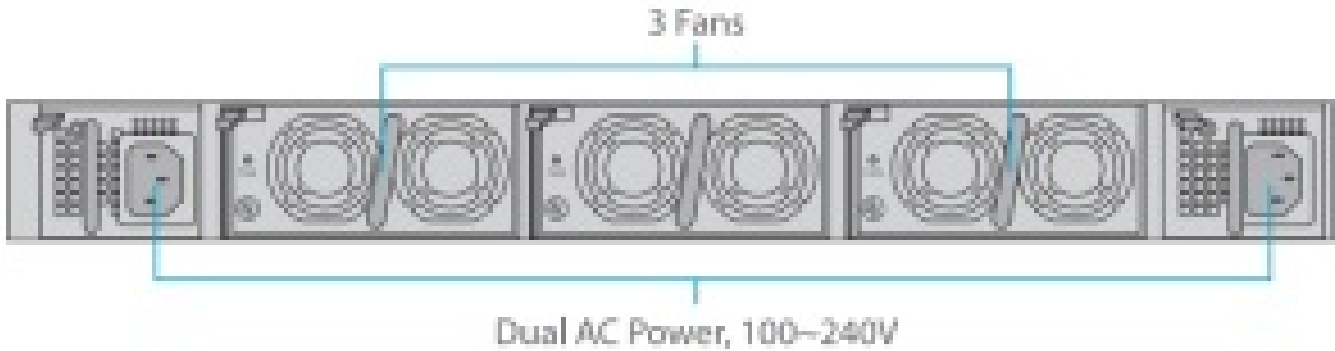
Front Panel LED



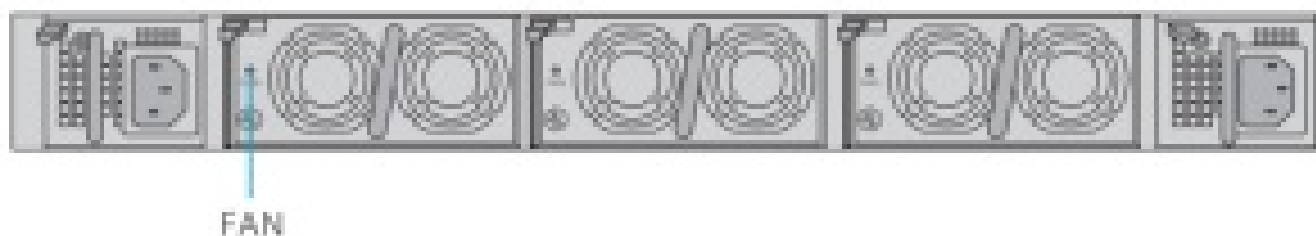
LED	Status	Description
SYS	Slow Flash of Green Light	The system works normally.
	Always OFF	The system is not normally enabled .
ALM	Quick Flash of Red Light	There is a critical alarm of the device.
	Slow Flash of Red Light	There is a major alarm of the device.
	Always Red	There is a minor alarm on the device.
	Always OFF	There is no alarm for the device.

LED	Status	Description
Port Indicator	<b>Always OFF</b>	<b>The port is disabled</b>
	Quick Flash of Red Light	There is a mismatch <b>alarm of the port.</b>
	Always Red	There is a los alarm of the port.
	<b>Always Green</b>	<b>There is no los and mismatch alarm of the port.</b>

### Back Panels



### Back Panel LED



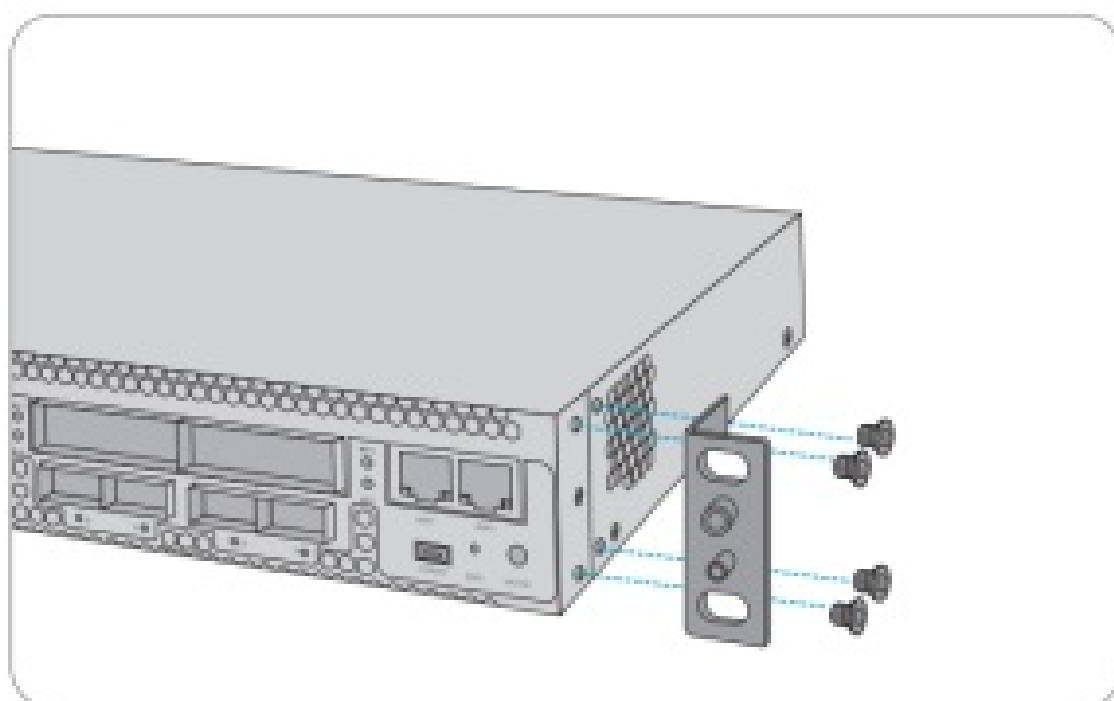
LED	Status	Description
FAN	Always Green	There is no alarm of those fans.
	Always Red	There is alarm of those fans.

## Site Environment

- Keep the equipment indoors. If it is in the rainy season or in a humid environment, dehumidification measures must be taken.
- Ensure there is no water on the storage floor and no leakage to the packing box of the equipment.
- Avoid automatic fire fighting facilities, heating systems,s and other places where leakage may occur.

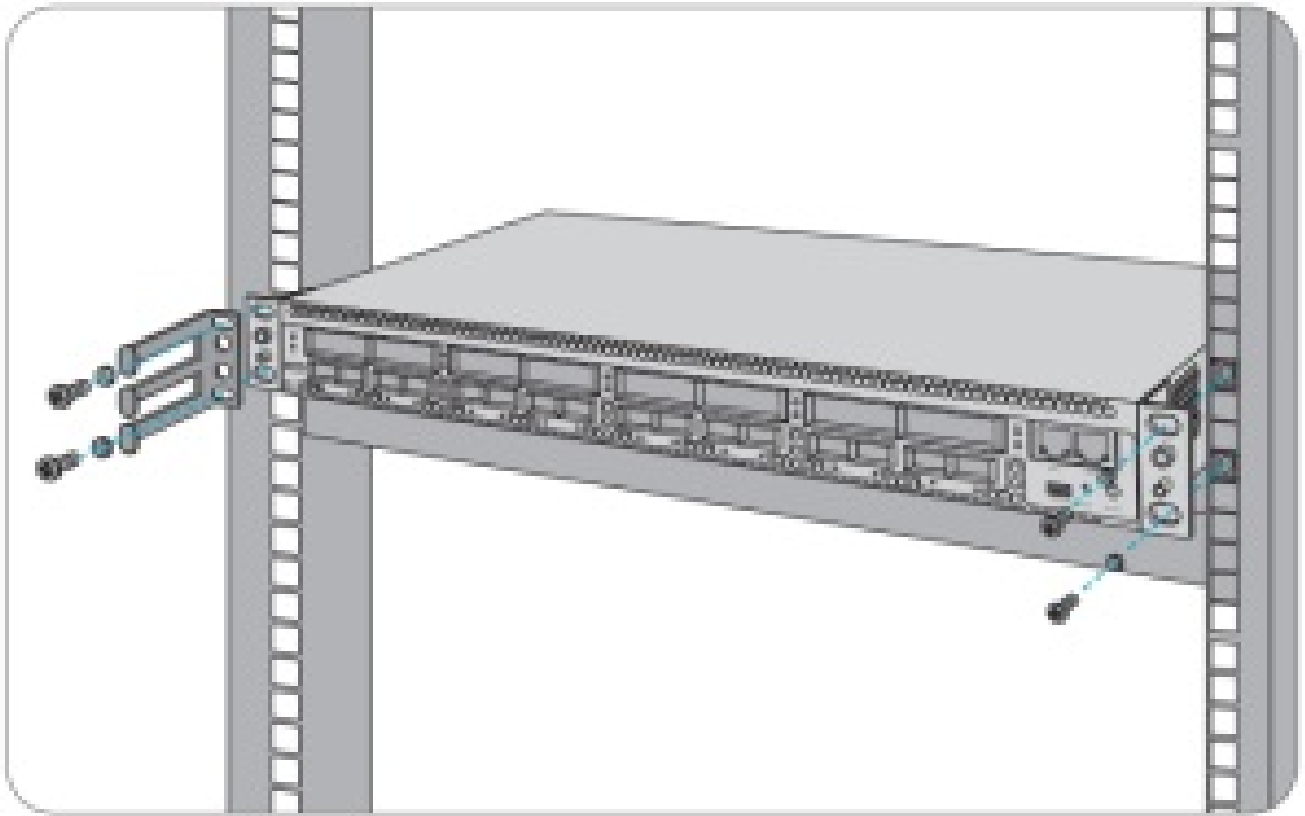
## Installing

### Installing Mounting Brackets



1. Secure the mounting brackets to the two sides of the 2006 transponder with 8x M4 screws.

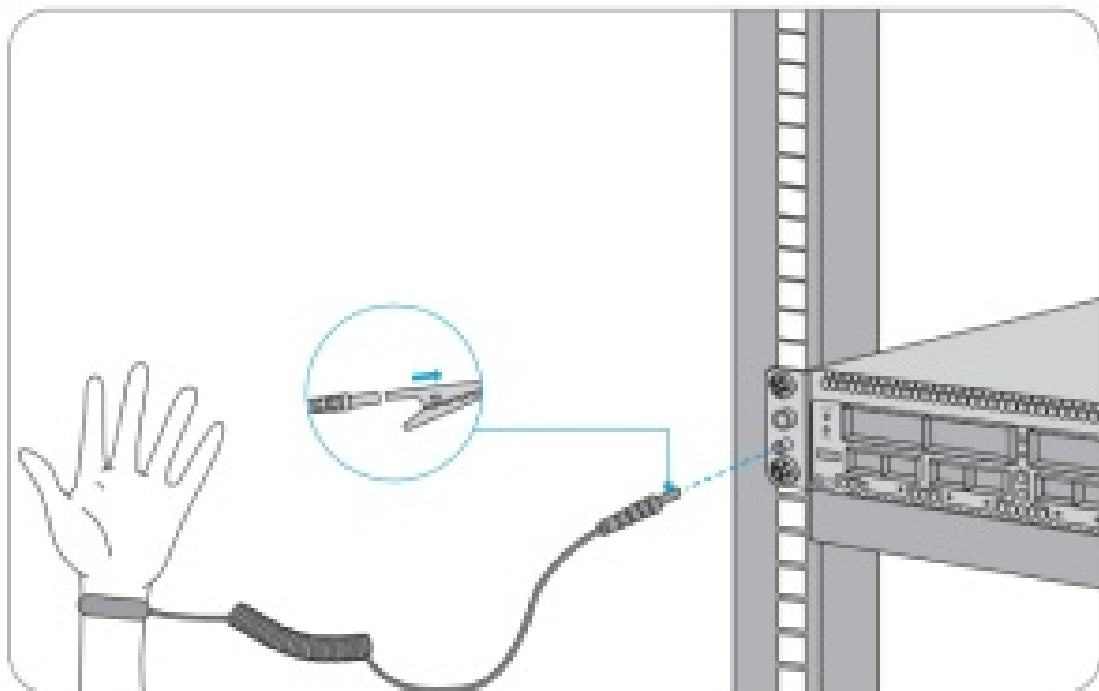
### Rack Mounting



1. Put the 200G transponder on the shelf in the cabinet.
2. Install and tighten the panel with 4 sets of M6 screws.
3. Cable manager can be installed together with mounting brackets to the cabinet.

## Wearing ESD Wrist Strap

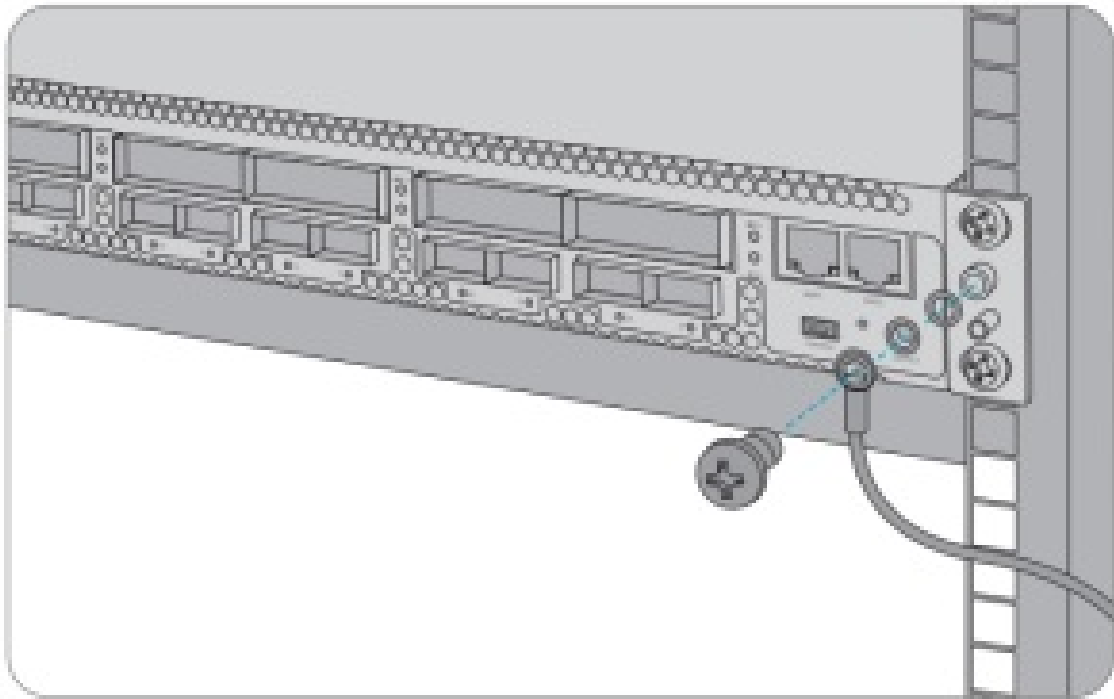
- 1.



Before touching any device or module, wear an ESD wrist strap or ESD gloves to protect sensitive components against electrostatic discharge from the human body.

2. Connect another end of the ESD wrist strap to the PGND point on the device.

## Grounding the 200G Transponder

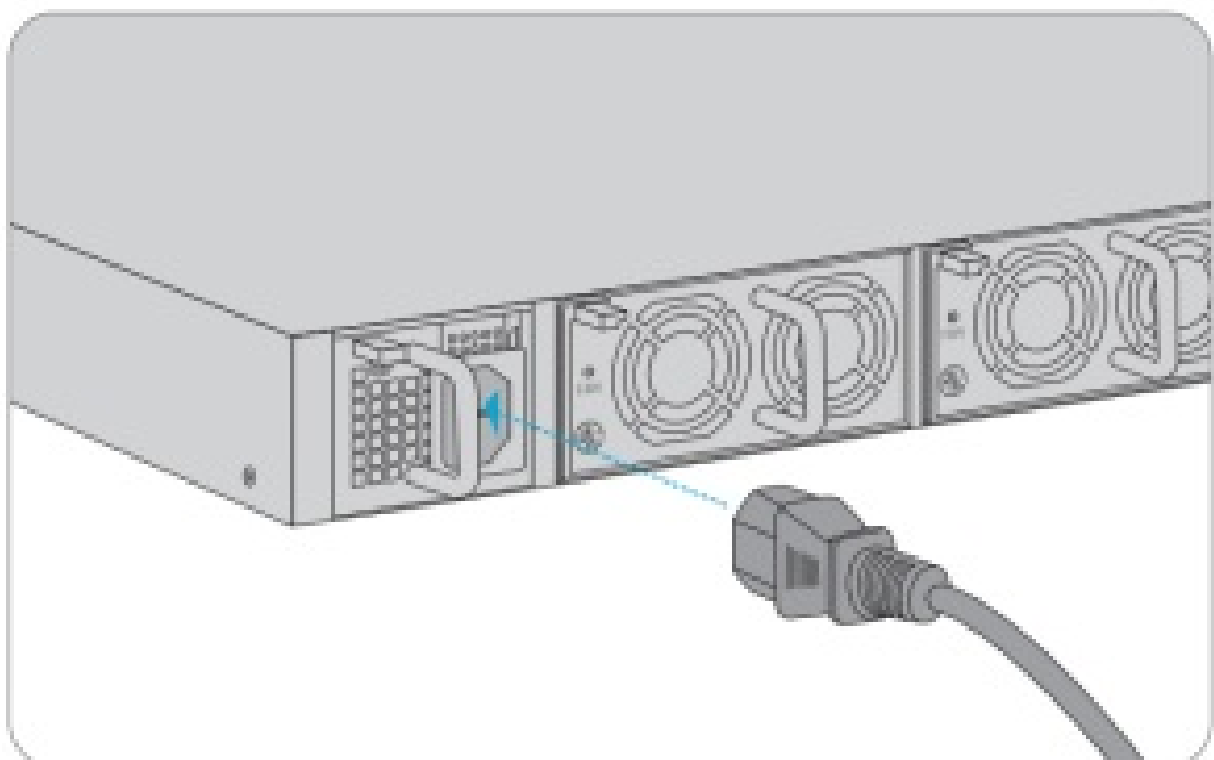


1. Secure the grounding lug to the grounding point on the chassis front panel with the washers and screws.
2. Connect the other end of the cable to a proper earth ground, such as the rack in which the 2006 transponder is mounted.



**CAUTION:** The earth connection must not be removed unless all supply connections have been disconnected.

## Connecting Power Cord



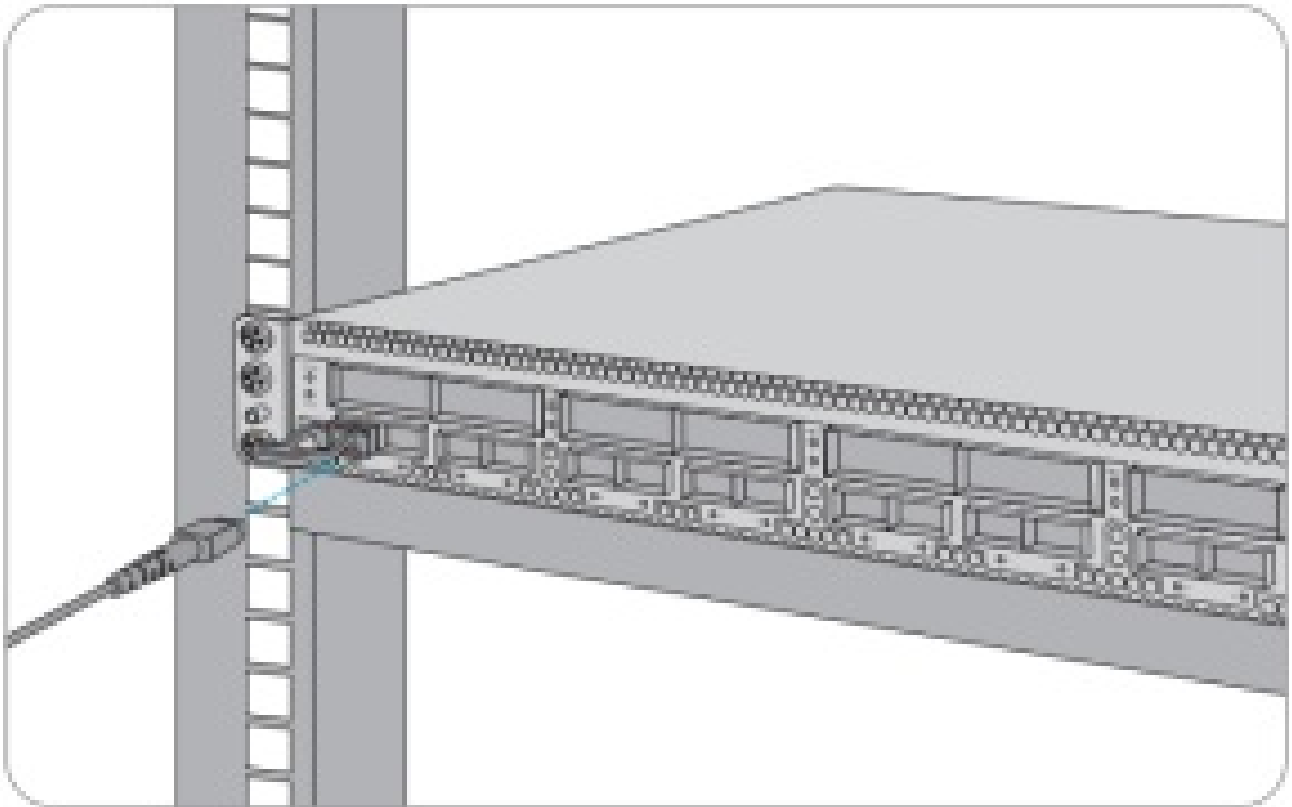


1. Plug the AC power cord into the power port on the front panel of the AC power module.
2. Connect the other end of the power cord to an AC power source.



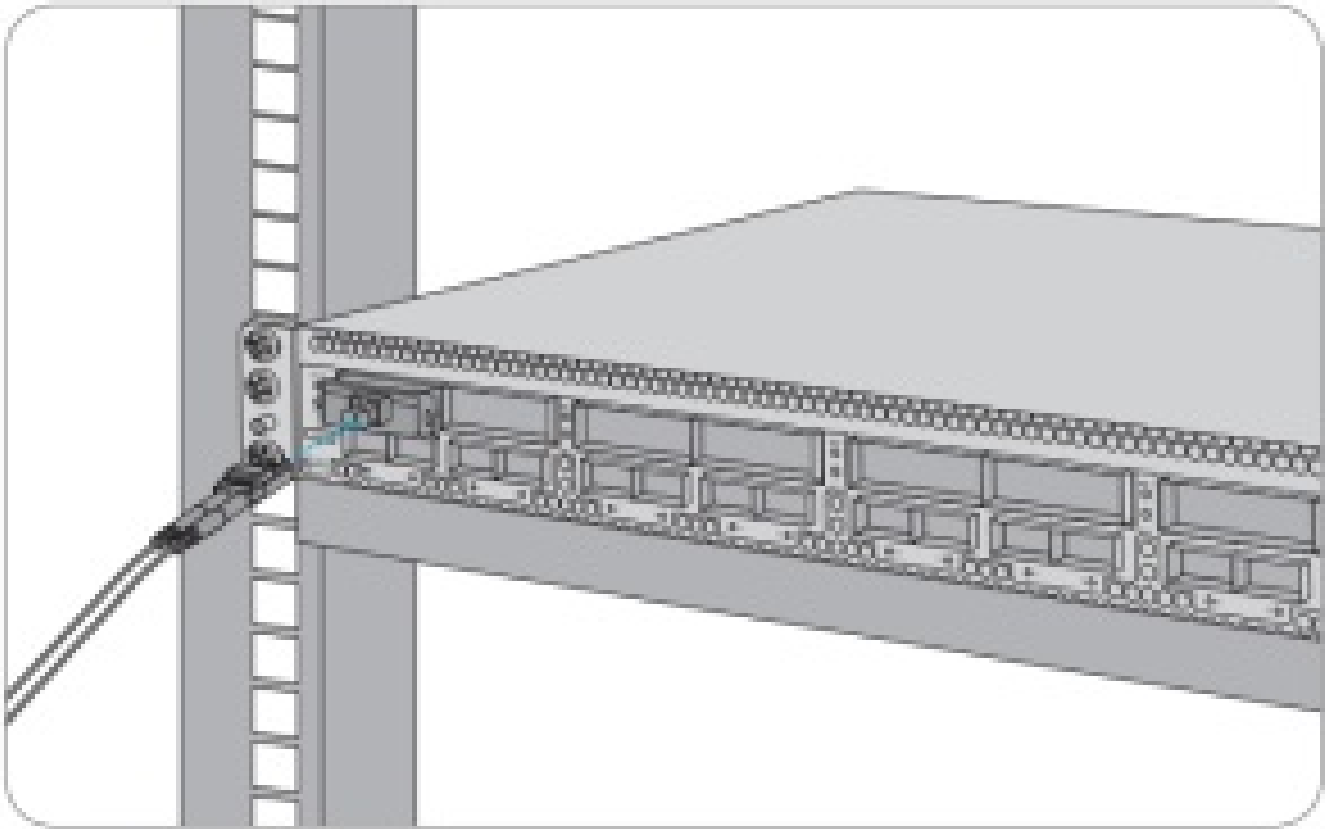
**WARNING:** Do not install power cables while the power is on.

### Connecting QSFP28 Transceiver



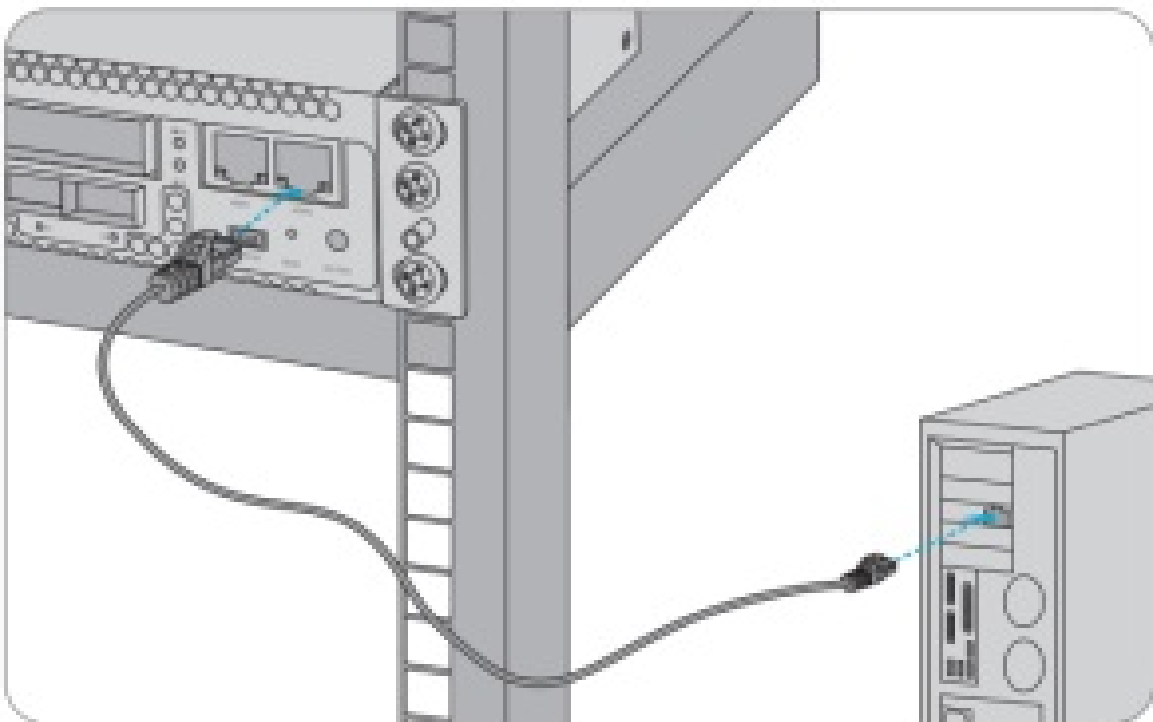
1. Plug the QSFP28 transceiver into the QSFP28 slot on the transponder.
2. Connect one end of fiber cable to the QSFP28 transceiver.
3. Connect the other end of the fiber cable to switch.

### Connecting Coherent CFP2 Transceiver



1. Plug the CFP2 transceiver into the CFP2 slot on the transponder.
2. Connect one end of fiber cable to the CFP2 transceiver.
3. Connect the other end of the fiber cable to the mux demux or optical amplifier module.

### **Connecting to the Management Ports**



1. Connect one end of the standard RJ45 Ethernet cable to the MGMT1 & 2 port on the 200G transponder.

2. Connect the other end of the cable to a computer.

## Configuring the M Series Platform

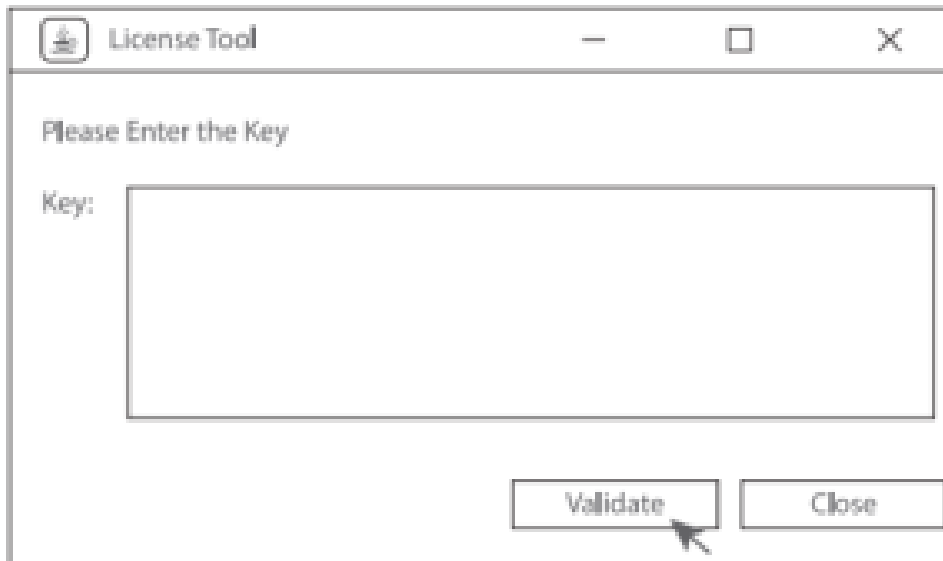
### Configuring the M Series Platform Using the Web-based Interface

**Step 1:** Connect your computer with the network cable to any Ethernet MGMT port of the NMU module.

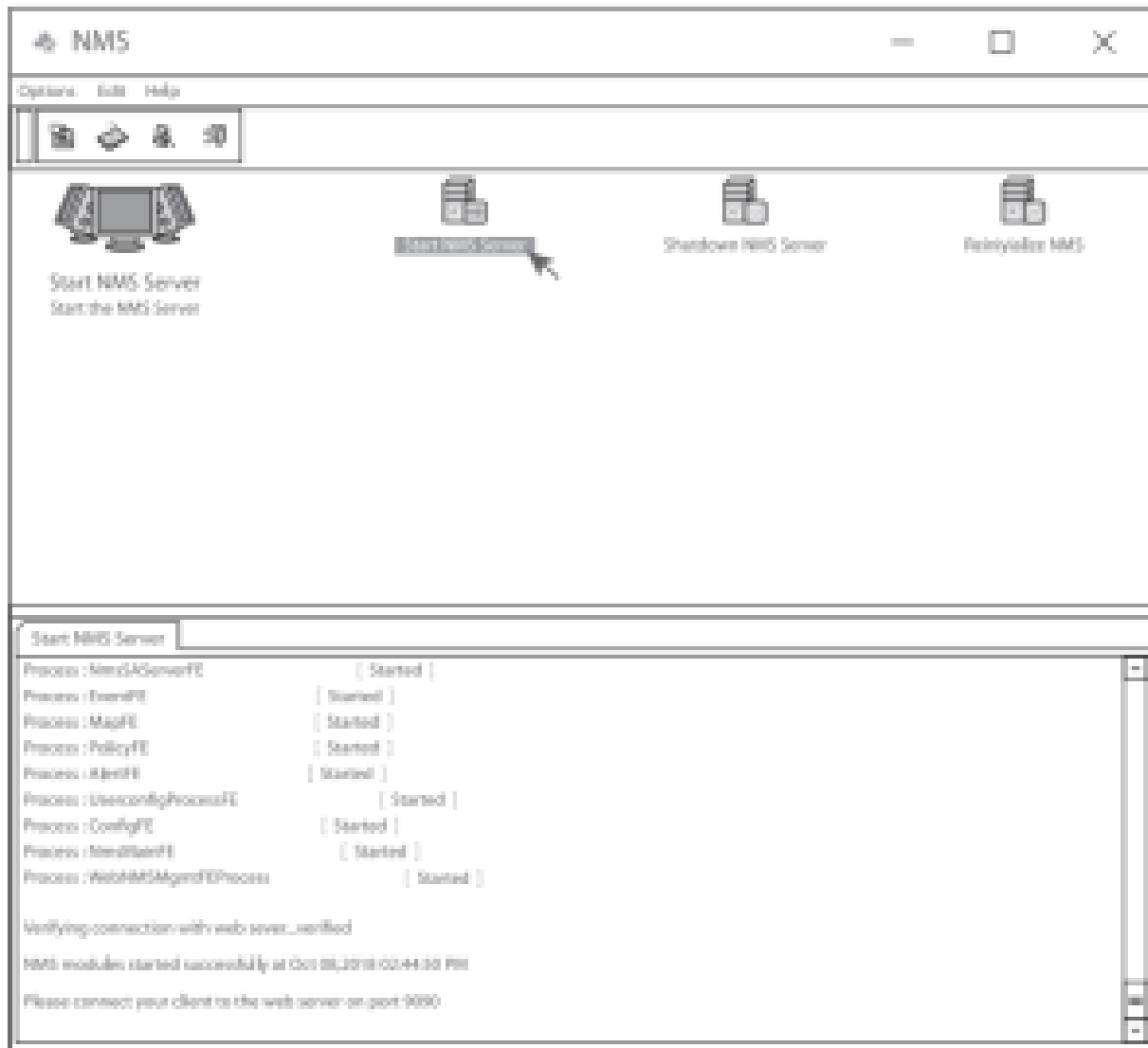
**Step 2:** Get the NMS software from the CD of chassis accessories or download the file “NMS software” online, and then install it.



**Step 3:** Double Click the “NMS Server” icon on the desktop and the dialogue box of license validation will pop up. Enter the license key(included in the CD) to finish validation. (If you can’t find the license key, please contact FS sales manager for help.)

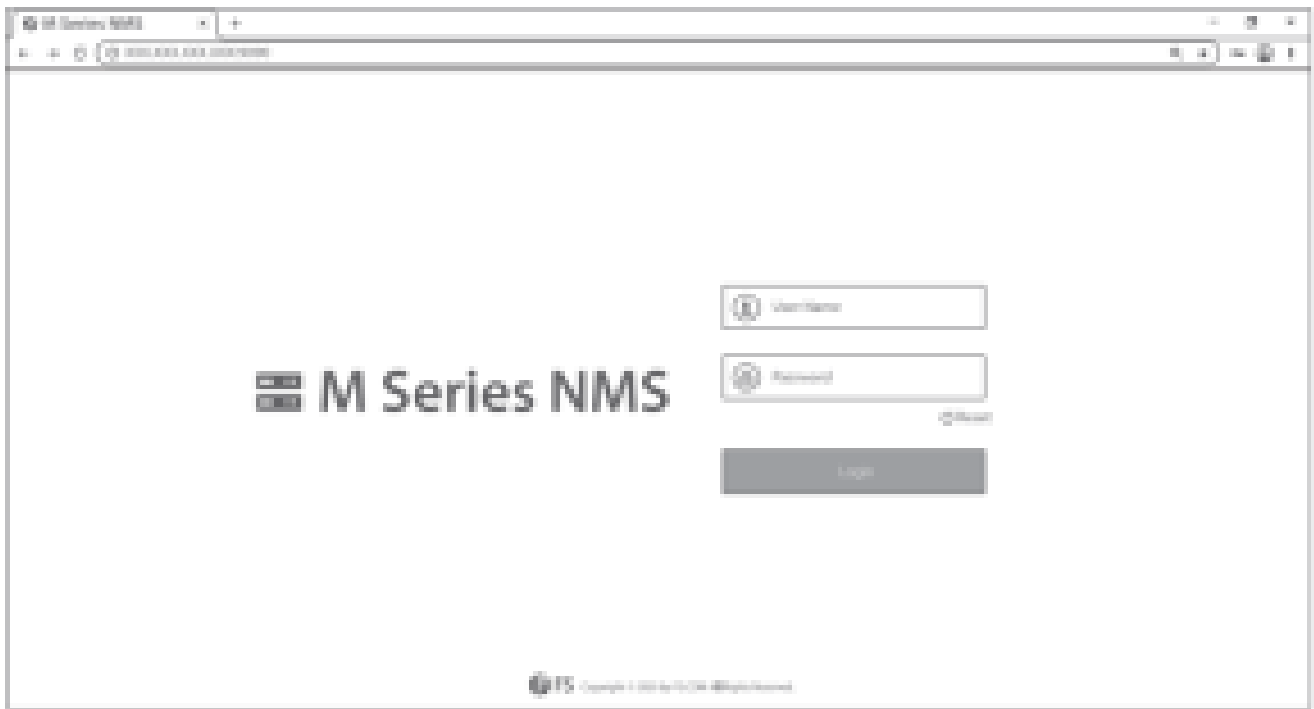


**Step 4:** Then the NMS server interface pops up. Double click “Start NMS Server” to run the server, when it prompts “Please connect your client to the webserver on port: 9090”, it means that you have successfully started the NMS server. And then you can close the NMS Server window, the server is still running in the background.



**Step 5:** Open a browser window. (Recommend IE11.0 and above version or Google Chrome browser). **(1)** If you log in from the local NMS host, enter localhost:9090 in the address bar to open the login interface. **(2)** If you log in from another remote host, enter the server IP address XXX.XXX.XXX.XXX:9090 (IP address of NMS server) to open the login interface.

**Step 6:** Enter correct user name and password (For the administrator, the default login user name is “root”, and the default password is “public”), as shown in the figure below:



**Step 7:** Click login, you are now ready to configure M series platform.



**NOTE:** Refer to the **M SERIES NETWORK MANAGEMENT USER MANUAL** online for further iter information.

## Troubleshooting

### Module LEDs Working Abnormally

1. Check the power cable connections at the 200G transponder and the power source.
2. Make sure that all cables are used correctly and comply with the power specifications.

### Accessing the Web-based Configuration Page Unsuccessfully

1. Check MGMT ports LED on the 200G transponder and make sure the Ethernet cable is connected properly.
2. Try another port on the 200G transponder and make sure the Ethernet cable is suitable and works normally.
3. Power of the 200G transponder. After a while, power it on again.
4. Make sure the IP address of your NMS server is correctly configured.
5. If you still cannot access the configuration page, please reinitialize NMS server to its factory defaults.

### Business Module Cannot Be Added



1. Enter through CMD.
2. Ping business module IP to check whether it can communicate.
3. Check whether normal communication can be made between the business module and NMU module.
4. Change another business module.

## Online Resources

•	Download	<a href="https://www.fs.com/download.html">https://www.fs.com/download.html</a>
•	Help Center	<a href="https://www.fs.com/service/help_center.html">https://www.fs.com/service/help_center.html</a>
•	Contact Us	<a href="https://www.fs.com/contact_us.html">https://www.fs.com/contact_us.html</a>

## Product Warranty



F5 ensures our customers that any damage or faulty items are due to our workmanship, we will offer a free return within 30 Days from the day you receive your goods. This excludes any custom-made items or tailored solutions.

	Warranty: M6800 series enjoys 2 years limited warranty against defects in materials or workmanship. For more details about the warranty, please check at: <a href="https://www.fs.com/policies/warranty.html">https://www.fs.com/policies/warranty.html</a>
	Return: If you want to return item(s), information on how to return can be found at: <a href="https://www.fs.com/policies/day_return_policy.html">https://www.fs.com/policies/day_return_policy.html</a>

**Q.C. PASSED**

**Copyright © 2020 FS.COM All Rights Reserved.**

## Documents / Resources

  <small>M Series M6800 SERIES OTN PLATFORM Quick Start Guide</small>	<a href="#">FS M6800 Series OTN Transmission Platform</a> [pdf] User Guide FS, M6800 Series, OTN, Transmission, Platform
---	---