

FS IPC501-FC-4M-T Turret Series Network Cameras



FS IPC501-FC-4M-T Turret Series Network Cameras User Guide

[Home](#) » [FS](#) » FS IPC501-FC-4M-T Turret Series Network Cameras User Guide 

Contents

- 1 FS IPC501-FC-4M-T Turret Series Network Cameras
- 2 Product Usage Instructions:
- 3 Introduction
- 4 Accessories
- 5 Hardware Overview
- 6 Installation Requirements
- 7 Maintenance
- 8 Mounting the Camera
- 9 Connecting the Power
- 10 Log in Camera
- 11 Product Warranty
- 12 Compliance Information
- 13 Documents / Resources
 - 13.1 References
- 14 Related Posts



FS IPC501-FC-4M-T Turret Series Network Cameras



Specifications:

- **Model:** Turret Series Network Cameras IPC501-FC-4M-T/IPC501-FC-8M-T
- **Resolution:** 4MP or 8MP (depending on model)
- **Power Interface:** 12V DC
- **Interfaces:** Ethernet, Audio, Alarm
- **Storage:** SD Card Slot

Product Usage Instructions:

Installation Requirements:

Ensure the wall or ceiling can support the camera's weight. Seek professional help for maintenance. Do not attempt unauthorized repairs.

Maintenance:

Clean the camera gently using an oil-free brush or dust blowing ball. Use a lens cleaning cloth with detergent if necessary.

Installing Micro SD Card (Optional):

Remove the housing to insert a Micro SD card. Do not hot plug the card after insertion.

Installing the Waterproof Kit (Optional):

Attach the waterproof kit to the Ethernet/DC cable using self-adhesive waterproof tape for protection.

Mounting the Camera:

1. Attach the sticker to the ceiling and drill guide holes.
2. Drill a hole for cables and secure the base plate with screws.
3. Connect and protect cables with waterproof tape, then mount the housing.
4. Rotate the camera to desired direction and tighten screws.

NOTE: For open installation, lead the tail cable out first before fastening screws.

Connecting the Power:

Use an Ethernet cable to connect the camera's Ethernet interface to a PoE port on a PoE device.

Frequently Asked Questions (FAQ):

- **Q: How do I reset the camera to factory settings?**

A: Use a pin to press and hold the reset button for about 15 seconds within 10 minutes of powering on the device.

- **Q: Can I clean the camera lens with any type of cloth?**

A: It is recommended to use a lens cleaning cloth with detergent for cleaning purposes.

TURRET SERIES NETWORK CAMERAS

Quick Start Guide V1.0

Introduction

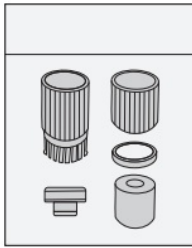
Thank you for choosing the Turret Series Network Cameras. This guide is designed to familiarize you with the structure of the cameras and describes how to deploy them in your network.



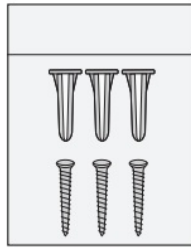
IPC501-FC-4M-T/IPC501-FC-8M-T

Accessories

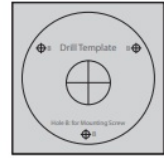
IPC501-FC-4M-T/IPC501-FC-8M-T



Waterproof Kit x1



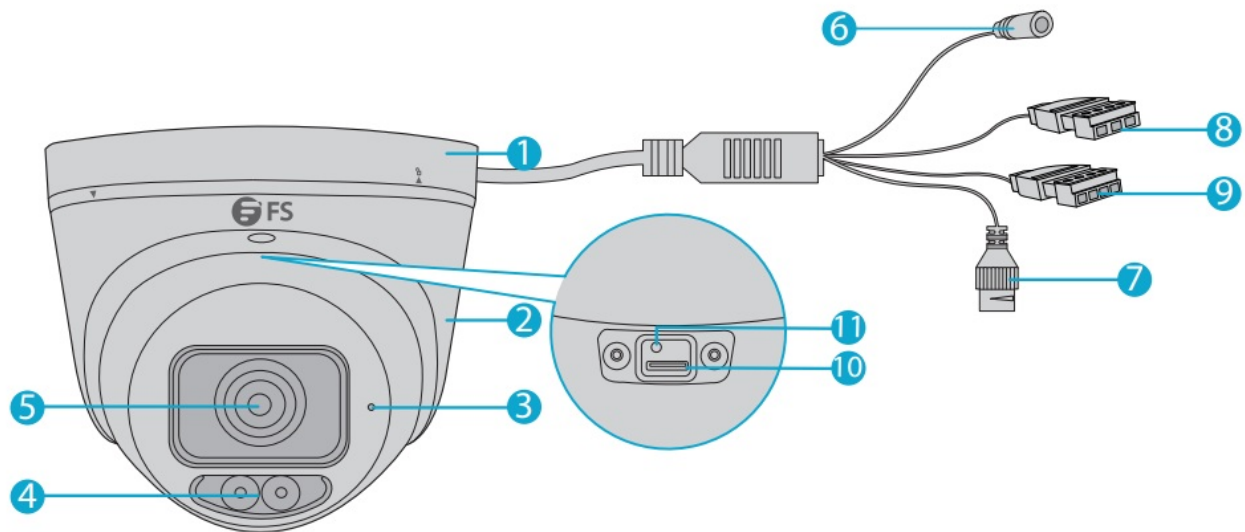
Screw Kit x1



Drill Template Sticker x1

Hardware Overview

IPC501-FC-4M-T/IPC501-FC-8M-T



No.	Description
1	Base Plate
2	Housing
3	Mic
4	Infrared LEDs
5	Lens
6	Power Interface (12V DC)
7	Ethernet Interface
8	Audio Interface
9	Alarm Interface
10	SD Card Slot
11	Reset Button

NOTE: Use a pin to press and hold the reset button for about 15 seconds to restore factory default settings. Perform this operation within 10 minutes after the device is powered on or the reset will fail otherwise.

Installation Requirements

Precautions

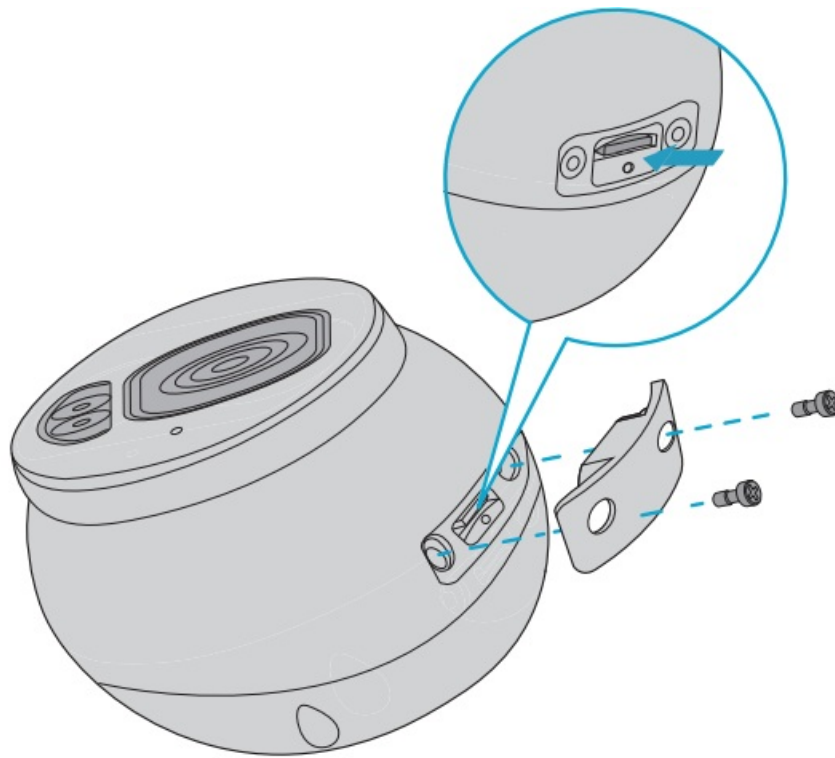
- Make sure the working temperature is maintained at -30°C~60°C, and the relative humidity is ≤95%. Keep the camera from excessive pressure, vibration, moisture, dust, and intensive electromagnetic radiation.
- Use a power adapter or a PoE device that meets the requirements. Otherwise, the device may be damaged.
- Make sure the length of the power cable between the power adapter and the camera is not too long, otherwise the camera might work abnormally because of the lowered voltage. If necessary, lengthen the cable between the power adapter and the mains.
- Do not overbend the cables during the installation, otherwise, poor cable contact may cause malfunction.
- Do not hold the tail cable by hand for weight bearing. Otherwise, the cable connector of the camera could be loosened.
- When connecting to an external interface, use an existing connection terminal, and ensure that the cable terminal (latch or clamp) is in good condition and properly fastened.
- Ensure that the cable is not tense during mounting, with a proper margin reserved to avoid poor port contact or loosening caused by shock or shake.
- Do not remove the protective film on the device until mounting is finished. Remove it before powering on the device.
- Make sure the wall or ceiling is strong enough to support the weight of the camera.
- Contact professionals for maintenance information. Do not attempt to dismantle the device by yourself. We shall not assume any responsibility for problems caused by unauthorized repair or maintenance.

Maintenance

- If there is dust on the front glass surface, remove the dust gently using an oil-free brush or a dust blowing ball.
- Clean the glass surface gently from the center outward using the lens cleaning cloth. If necessary, use the cloth dipped with detergent.

Installation

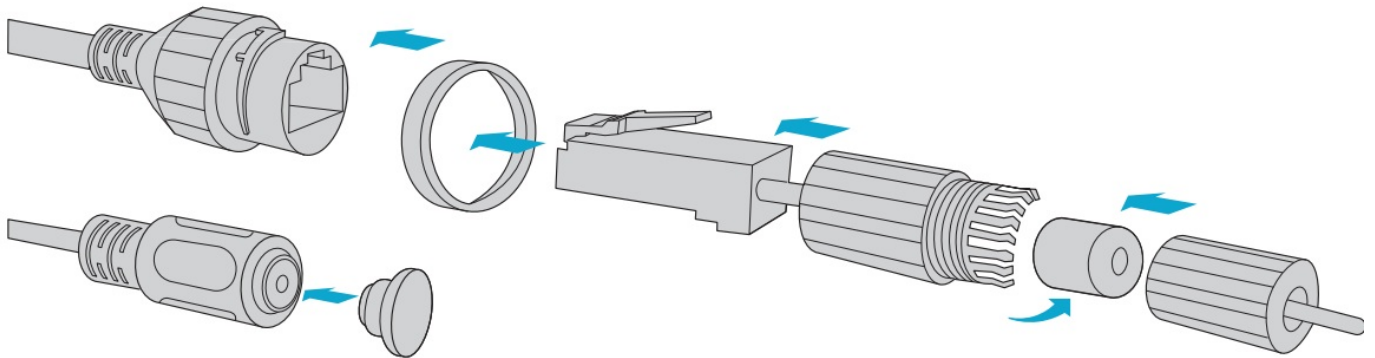
Installing Micro SD Card (Optional)



Remove the housing of the camera to insert the Micro SD card (purchased separately).

NOTE: Do not hot plug the Micro SD card after it is inserted.

Installing the Waterproof Kit (Optional)

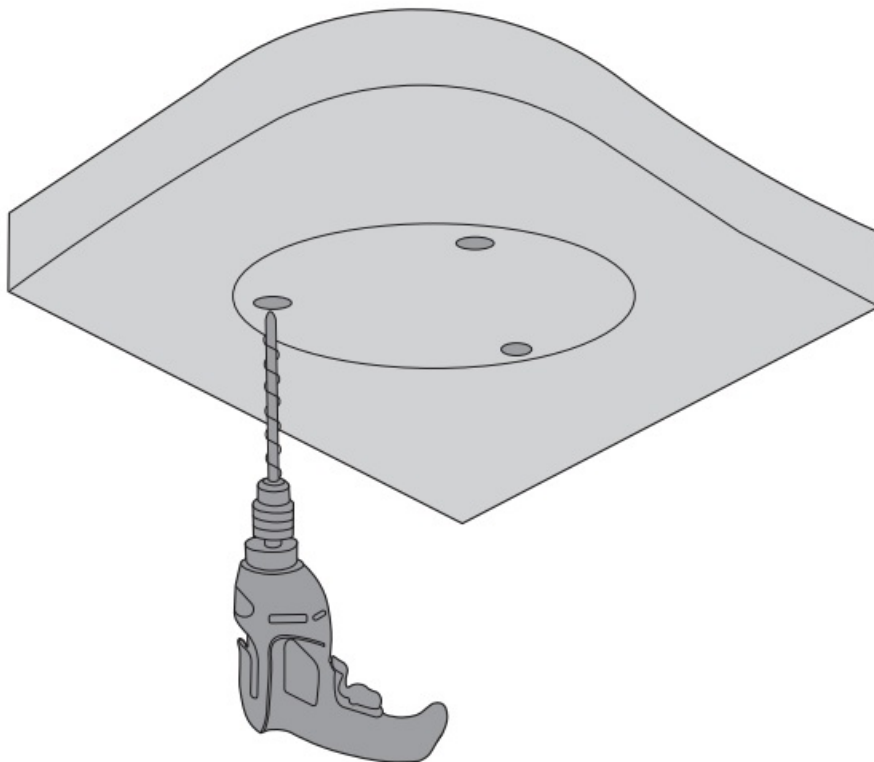


Install the supplied waterproof kit to the Ethernet cable/DC cable.

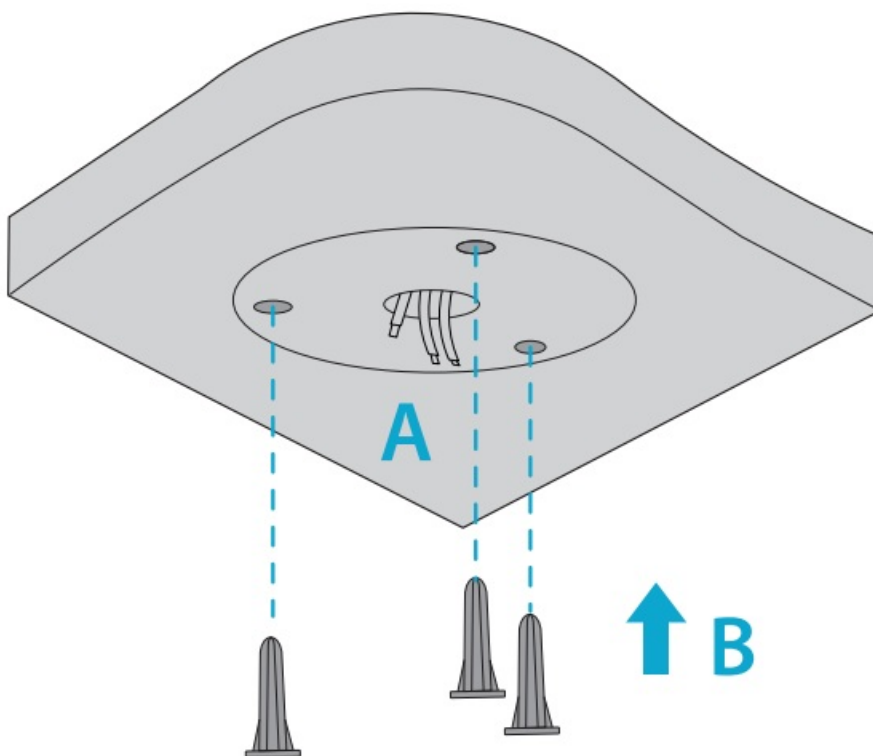
NOTE: Please use the self-adhesive waterproof tape (purchased separately) to protect the cable.

Mounting the Camera

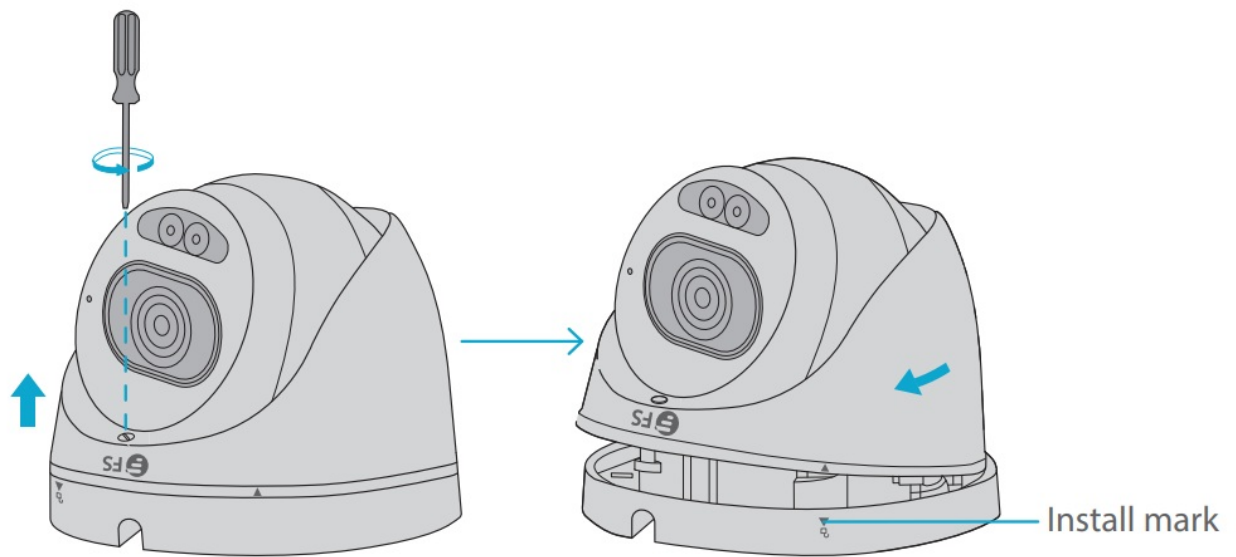
1. Attach the sticker to the ceiling, and then drill three guide holes (diameter: 6mm~6.5mm, depth: 30mm) in the marked locations.



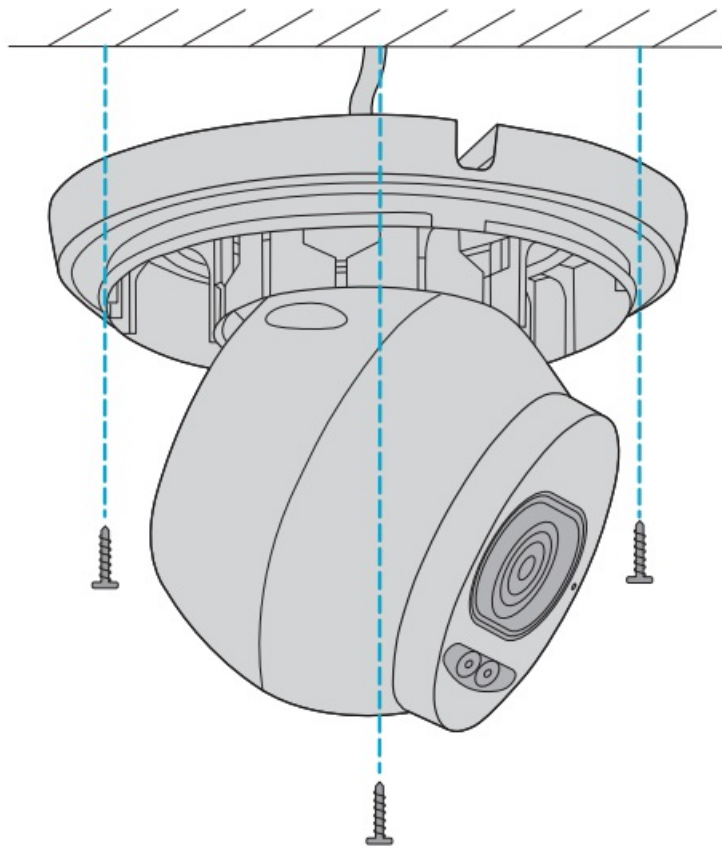
2. Drill a hole to lead cables out of the ceiling (A) and knock the wall plugs into the guide holes (B).



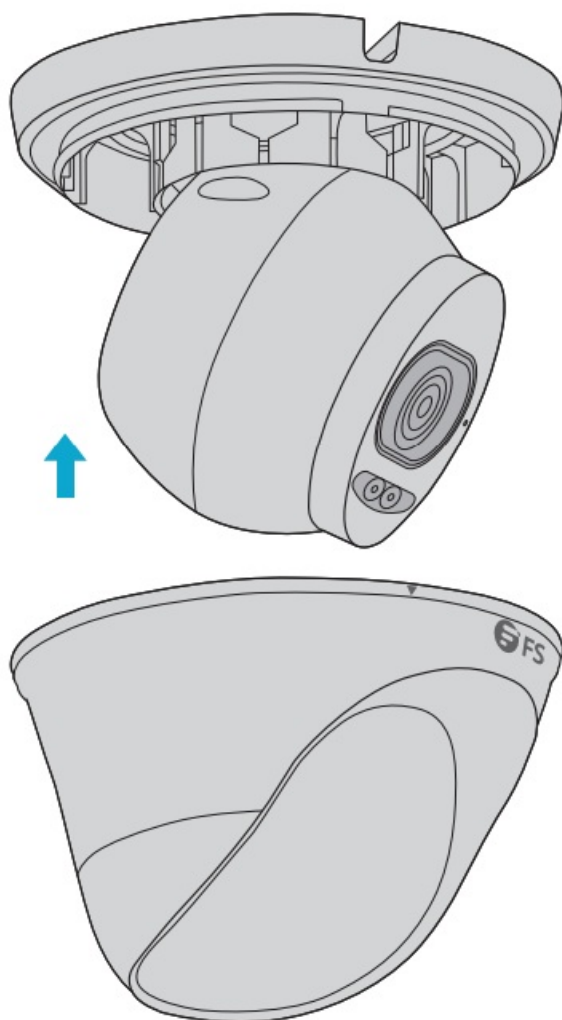
3. Loosen the screw and remove the housing from the base plate with the marks aligned.



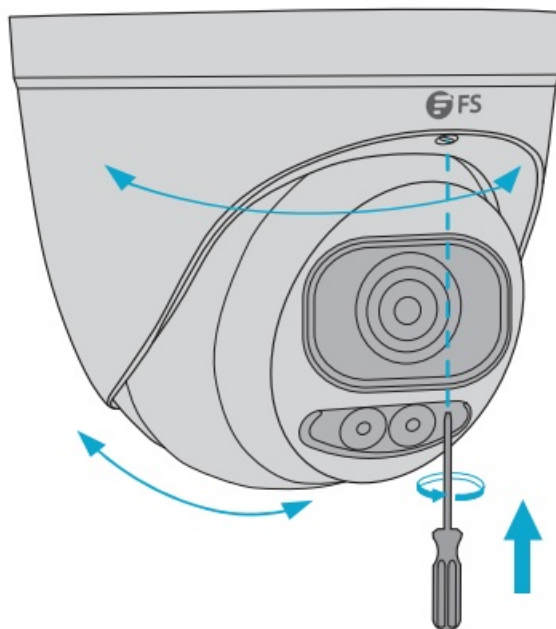
4. Connect the cable and protect it with waterproof tape, then secure the base plate to the ceiling with the supplied screws.



5. Mount the housing with the marks aligned.



6. Rotate the camera to the desired monitoring direction and tighten the screw.

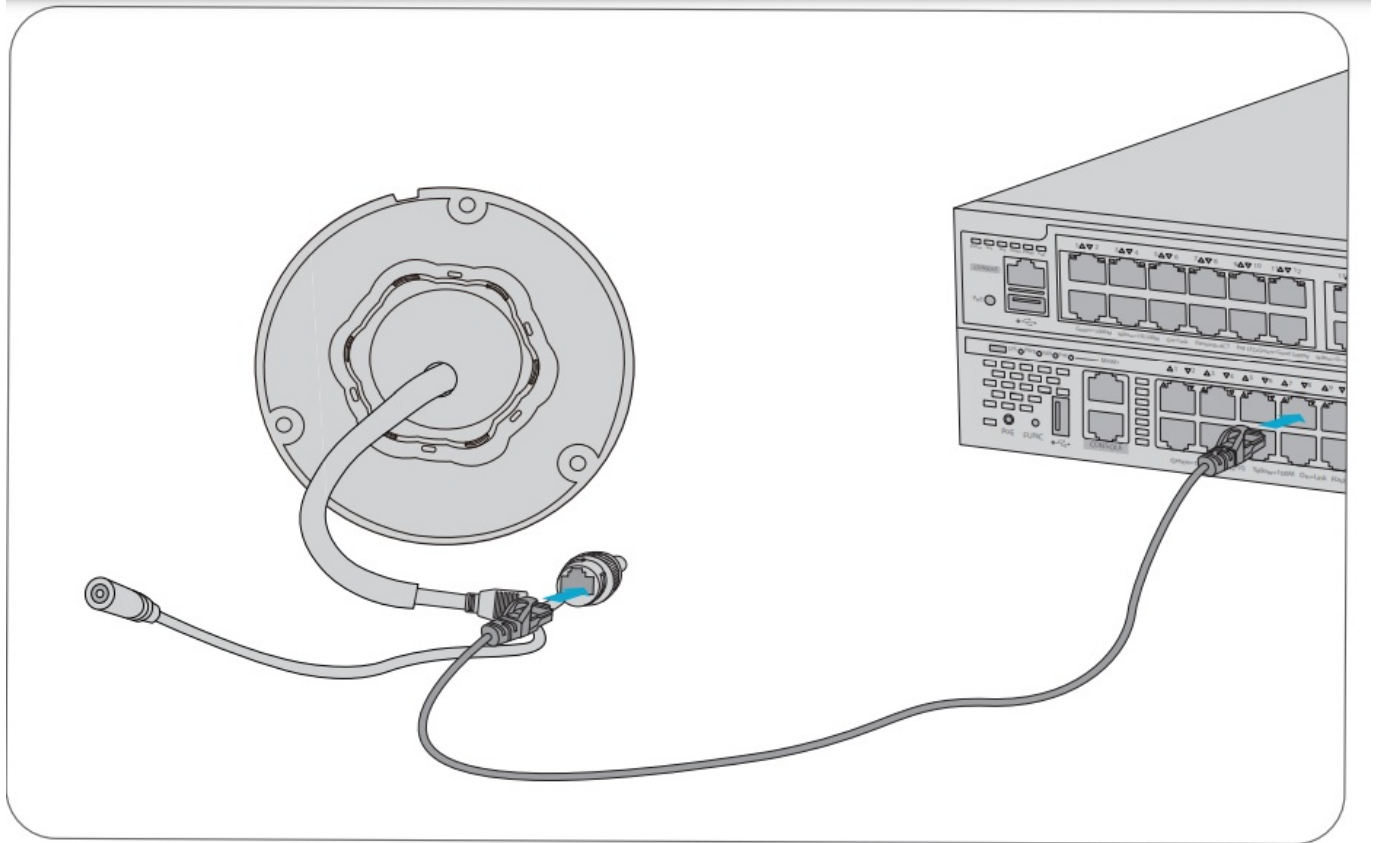


NOTE:

1. Do not adjust the monitoring direction by force with the screw fully tightened.
2. The above steps are for concealed installation. For open installation, lead the tail cable out of the open slot on the base plate first and then fasten the screw.

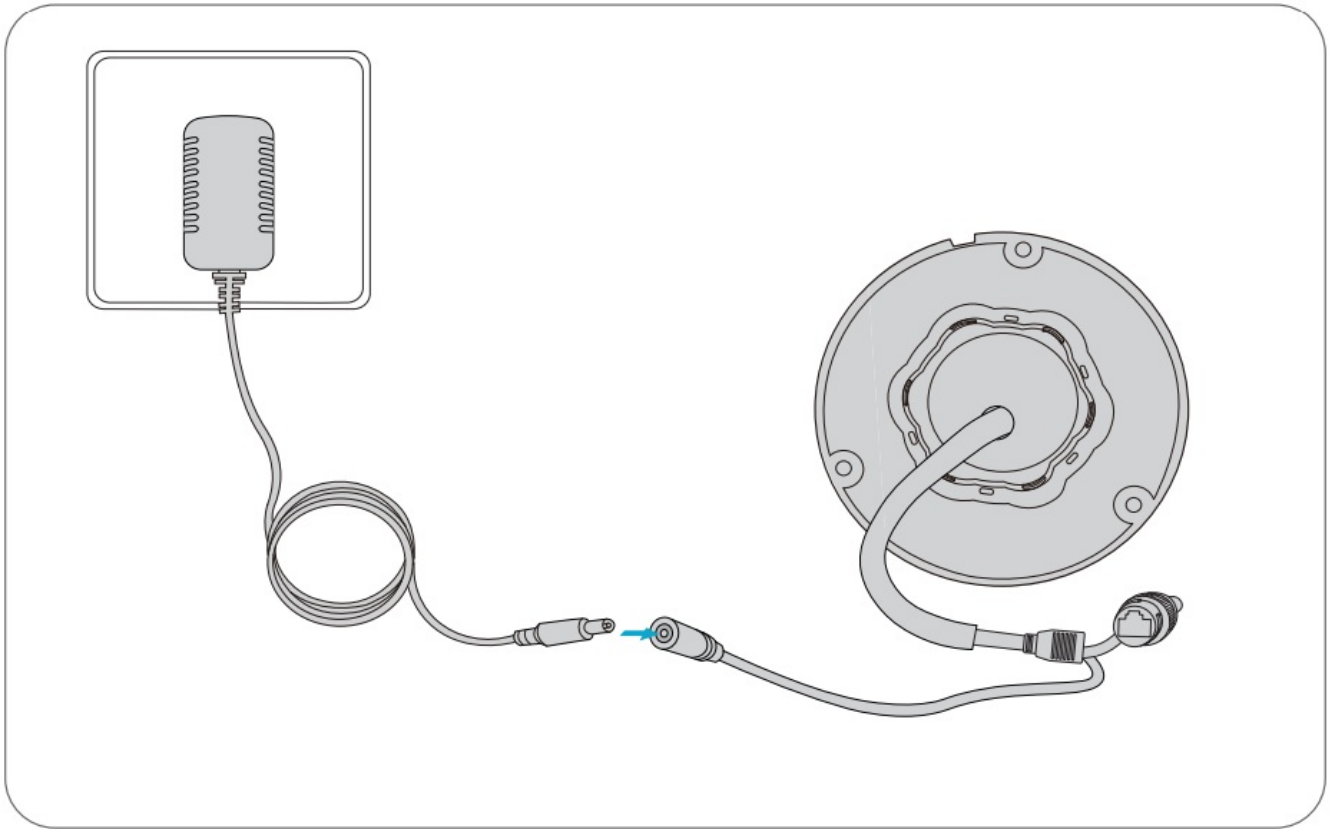
Connecting the Power

PoE Device



Use an Ethernet cable to connect the Ethernet interface of the camera to the PoE port on a PoE device, such as a PoE switch or a PoE NVR.

Power Adapter



Use the power adapter (purchased separately) to connect the power interface of the camera to the local power source.


Log in Camera

Before you begin, check that:

- Your camera is operating properly and connected to the network.
- The PC you are using is installed with Chrome 45 or later.

Follow these steps to log in your camera through the Web:

1. Open your browser, input the IP address of your camera in the address bar and then press Enter to open the login page. The default IP is 192.168.1.13.
2. Enter the default username and password (admin/admin) and then click Login.

IPC501-FC-4M-T

English ▼

Username

admin

Password

Forgot Password?

☒ Live View

Login

Reset

NOTE:

1. DHCP is enabled by default. If a DHCP server is used in your network, your camera may be assigned an IP address, and you need to use the assigned IP address to log in.
2. You may need to install a plug-in at your first login. Please follow the on-screen instructions to complete the installation and then open the browser again to log in.
3. The default password is intended only for your first login. To ensure security, please change the password after your first login. You are strongly recommended to set a strong password of at least nine characters including all three elements: digits, letters and special characters.
4. If the password has been changed, please use the new password to log in.

Online Resources

Download https://www.fs.com/products_support.html
Help Center https://www.fs.com/service/fs_support.html
Contact Us https://www.fs.com/contact_us.html

Product Warranty

FS ensures our customers that for any damage or faulty items due to our workmanship, we will offer a free return within 30 days from the day you receive your goods. This excludes any custom-made items or tailored solutions.



Warranty: The products enjoy a 3-year limited warranty against defects in materials or workmanship. For more details about the warranty, please check at <https://www.fs.com/policies/warranty.html>



Return: If you want to return the item(s), information on how to return can be found at https://www.fs.com/policies/day_return_policy.html

Compliance Information

FCC

Note: This equipment has been tested and found to comply with the limits for a Class A digital device, pursuant to part 15 of the FCC Rules. These limits are designed to provide reasonable protection against harmful interference when the equipment is operated in a commercial environment. This equipment generates, uses, and can radiate radio frequency energy and, if not installed and used in accordance with the instruction manual, may cause harmful interference to radio communications. Operation of this equipment in a residential area is likely to cause harmful interference in which case the user will be required to correct the interference at his own expense. This device complies with part 15 of the FCC Rules. Operation is subject to the following two conditions:

1. This device may not cause harmful interference, and
2. this device must accept any interference received, including interference that may cause undesired operation.

CE

FS.COM GmbH hereby declares that this device is in compliance with the Directive 2014/30/EU and 2014/35/EU . A copy of the EU Declaration of Conformity is available at www.fs.com/company/quality_control.html . Die **FS.COM** GmbH erklärt hiermit, dass dieses Gerät mit der Richtlinie 2014/30/EU und 2014/35/EU konform ist. Eine Kopie der EU-Konformitätserklärung finden Sie unter www.fs.com/de/company/quality_control.html **FS.COM** GmbH déclare par la présente que cet appareil est conforme à la Directive 2014/30/UE et 2014/35/UE . Une copie de la Déclaration UE de Conformité est disponible sur https://www.fs.com/fr/company/quality_control.html

FS.COM LIMITED

24F, Infore Center, No.19, Haitian 2nd Rd, Binhai Community, Yuehai Street, Nanshan District, Shenzhen City

FS.COM GmbH

NOVA Gewerbepark Building 7,
Am Gfild 7, 85375 Neufahrn bei Munich, Germany

UKCA

Hereby, **FS.COM** Innovation Ltd declares that this device is in compliance with the Directive SI 2016 No. 1091 and SI 2016 No. 1101.

FS.COM LIMITED

24F, Infore Center, No.19, Haitian 2nd Rd, Binhai Community, Yuehai Street, Nanshan District, Shenzhen City

FS.COM Innovation Ltd

4th Floor Imperial House, 8 Kean Street, London, England, WC 2B 4AS

IC

CAN ICES-003(A)/NMB-003(A)


This device contains licence-exempt transmitter(s)/receiver(s) that comply with Innovation, Science and Economic Development Canada's licence-exempt RSS(s). Operation is subject to the following two conditions:

1. This device may not cause interference.
2. This device must accept any interference, including interference that may cause undesired operation of the device.

The digital apparatus complies with Canadian CAN ICES-003(A)/NMB-003(A).

Q.C. PASSED

Documents / Resources

 <small>TURRET SERIES NETWORK CAMERAS IPC501-FC-4M-T Turret Series Network Camera Quick Start Guide</small>	FS IPC501-FC-4M-T Turret Series Network Cameras [pdf] User Guide IPC501-FC-4M-T Turret Series Network Cameras, IPC501-FC-4M-T, Turret Series Network Cameras, Series Network Cameras, Network Cameras, Cameras
---	---

References

- [FS.com - HPC, Data Center, Enterprise, Telecom](#)
- [HPC, Data Centre, Enterprise, Telecom - FS.com United Kingdom](#)
- [HPC, Rechenzentrum, Unternehmen, Telekom - FS.com Deutschland](#)
- [Contact Us - FS.com](#)
- [Kontakt - FS.com Deutschland](#)
- [Rückgaberecht - FS.com Deutschland](#)
- [HPC, Rechenzentrum, Unternehmen, Telekom - FS.com Deutschland](#)
- [Technische Dokumente - FS.com Deutschland](#)
- [Hilfezentrum - FS.com Deutschland](#)
- [HPC, Datacenter, Enterprise, Télécom - FS.com France](#)
- [Comment Nous Contacter - FS.com France](#)
- [Politique de retour - FS.com France](#)
- [HPC, Datacenter, Enterprise, Télécom - FS.com France](#)
- [Documents techniques - FS.com France](#)
- [Centre d'aide - FS.com France](#)
- [Return Policy - FS.com](#)
- [HPC, Data Centre, Enterprise, Telecom - FS.com Australia](#)
- [Technical Documents - FS.com](#)
- [Help Center - FS.com](#)
- [User Manual](#)

[Manuals+](#), [Privacy Policy](#)

This website is an independent publication and is neither affiliated with nor endorsed by any of the trademark owners. The "Bluetooth®" word mark and logos are registered trademarks owned by Bluetooth SIG, Inc. The "Wi-Fi®" word mark and logos are registered trademarks owned by the Wi-Fi Alliance. Any use of these marks on this website does not imply any affiliation with or endorsement.