



FS IPC201-2M-B Bullet Network Camera User Guide

[Home](#) » [FS](#) » FS IPC201-2M-B Bullet Network Camera User Guide 

Contents

- [1 FS IPC201-2M-B Bullet Network Camera](#)
- [2 Introduction](#)
- [3 Accessories](#)
- [4 Hardware Overview](#)
- [5 Buttons](#)
- [6 Installation Requirements](#)
- [7 Mounting the Camera Installing Micro SD Card \(Optional\)](#)
- [8 Wall Mounting](#)
- [9 Connecting the Power](#)
- [10 Configuring the Camera](#)
- [11 Support and Other Resources](#)
- [12 Product Warranty](#)
- [13 Documents / Resources](#)
 - [13.1 References](#)
- [14 Related Posts](#)

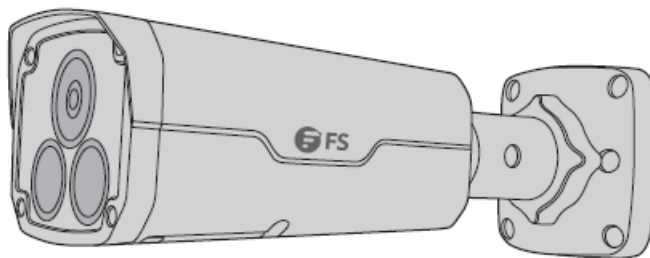


FS IPC201-2M-B Bullet Network Camera



Introduction

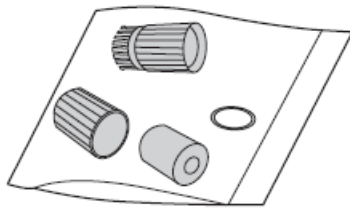
Thank you for choosing bullet network cameras. This guide is designed to familiarize you with the structure of the camera and describes how to deploy the camera in your network.



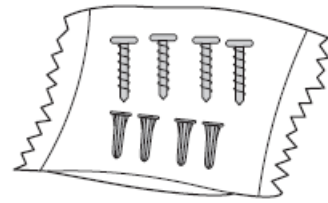
Bullet Network Cameras

Accessories

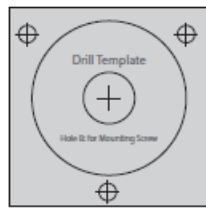
IPC204-2M-B



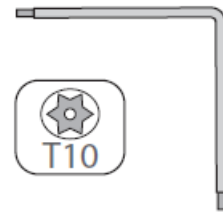
Waterproof Components ×1



Screw Components ×1



Installation Position Map x1



Wrench x1

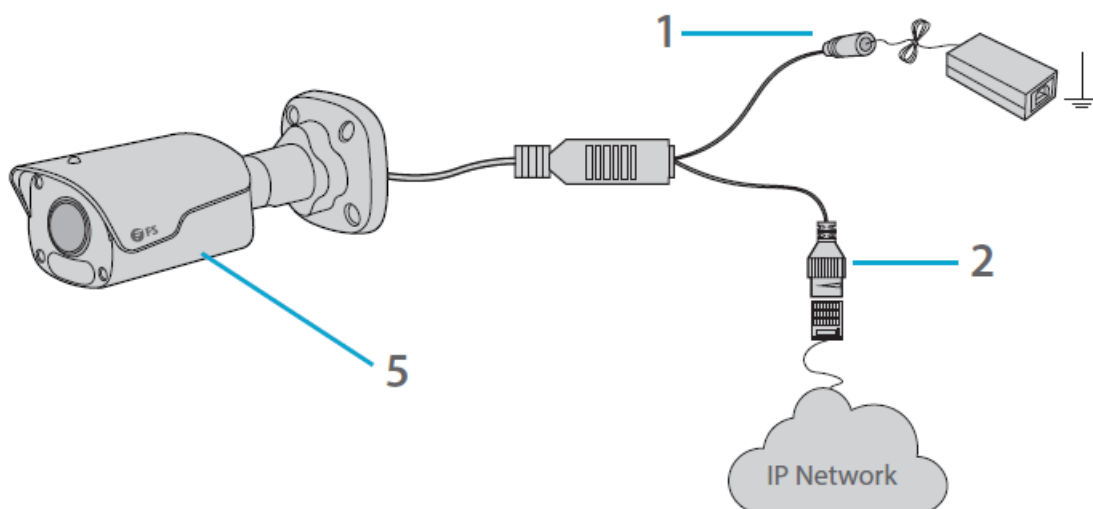
NOTE:

The installation position map varies according to the different models of cameras.

Hardware Overview

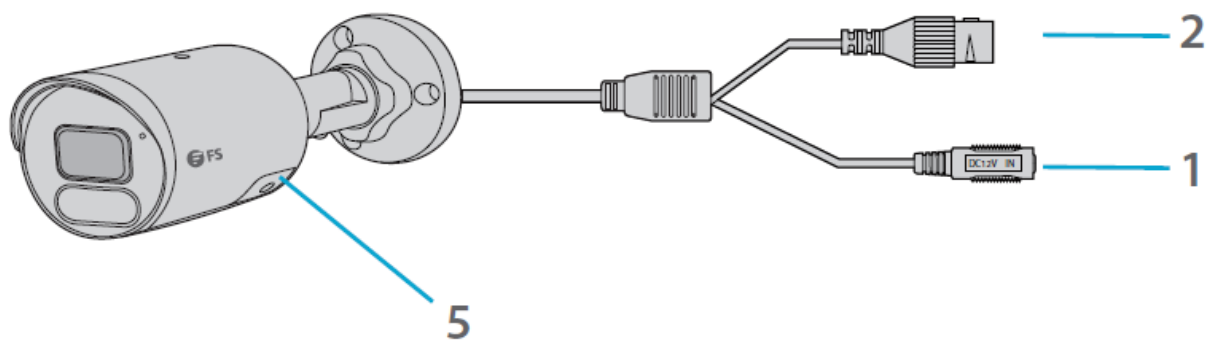
Ports

IPC201-2M-B

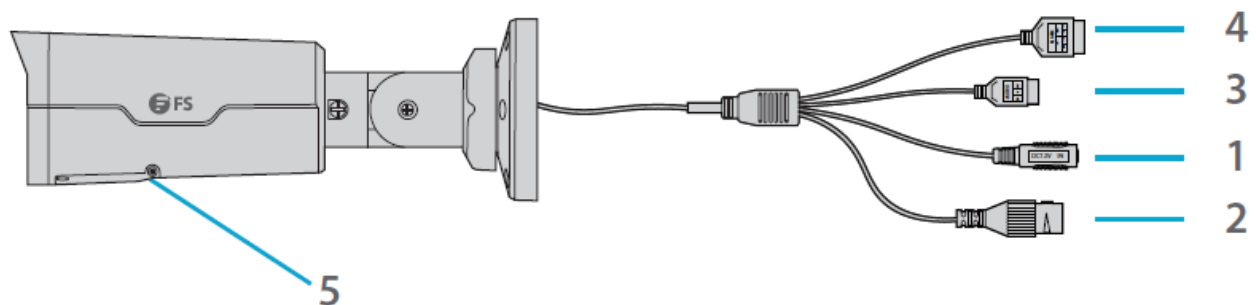


IPC204-2M-B / IPC301-8M-B

IPC204-2M-B / IPC301-8M-B



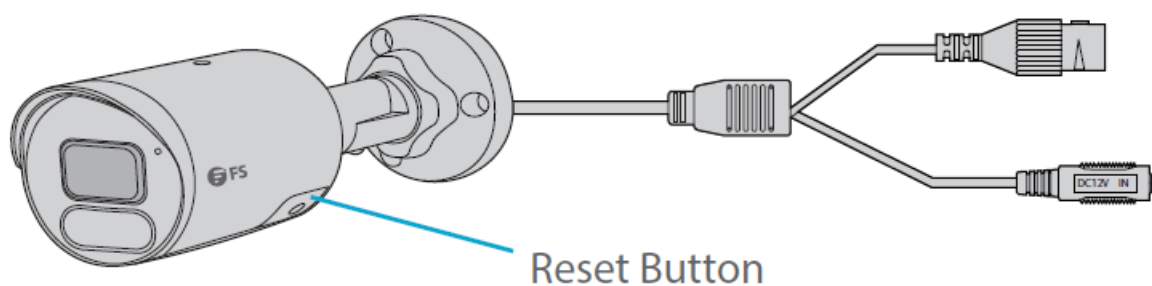
IPC501-5M-B / IPC305-5M-B / IPC304-8M-B



NO	Ports	Description
1	Power Interface	Connect DC 12V power
2	Ethernet Interface	Connect to Ethernet cable
3	Audio Interface	Input/output audio signal
4	Alarm Interface	Input/output alarm signal
5	Micro SD Card Slot	Insert the Micro SD card (purchased separately) to get a local storage

Buttons

IPC204-2M-B / IPC301-8M-B

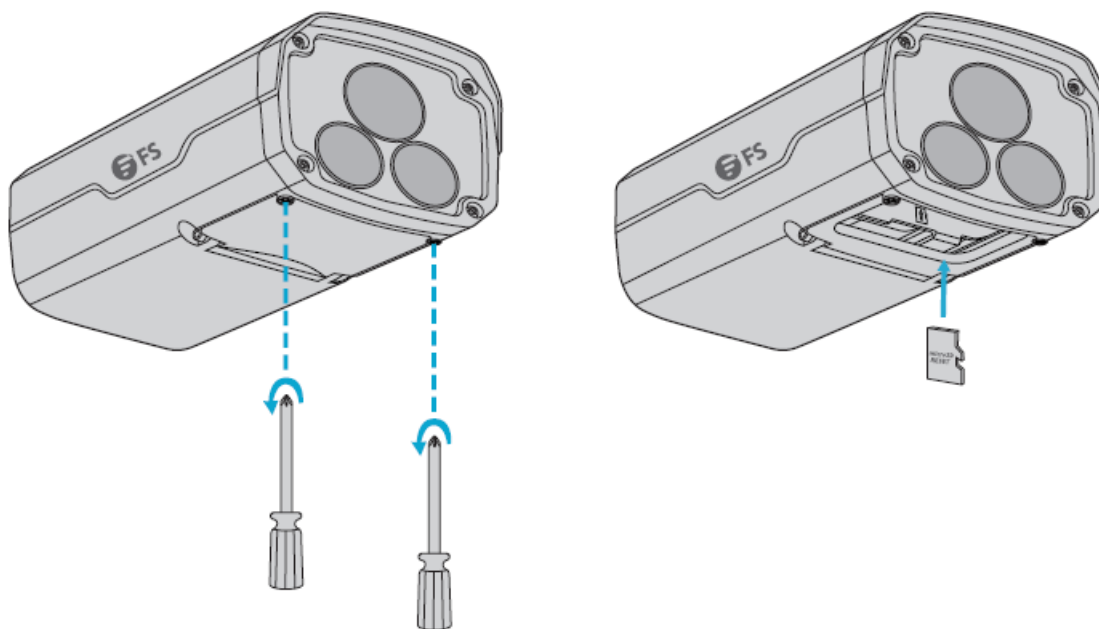


Buttons	Description
Reset Button	Press and hold the reset button for more than 15 seconds to restore factory default settings. Perform this operation within 10 minutes after the device is powered on or the reset will fail otherwise.

Installation Requirements

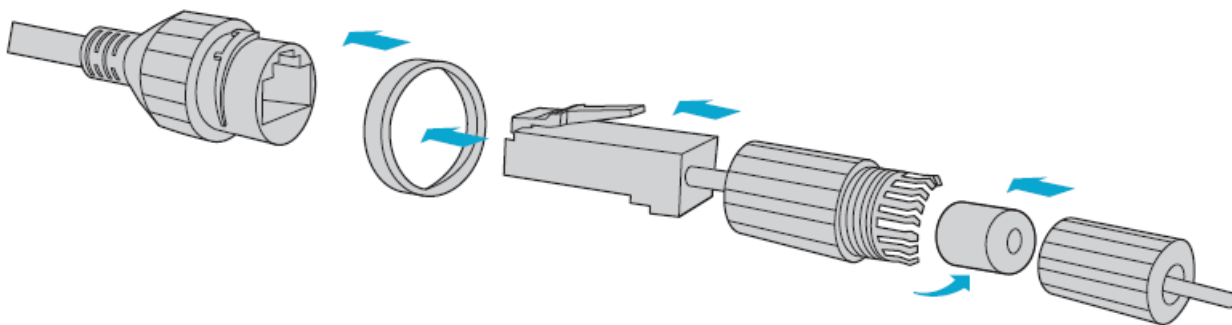
- Installation and removal of the device and its accessories must be carried out by qualified personnel.
- Store or use the device in a proper environment that meets environmental requirements, including and not limited to, temperature, humidity, dust, corrosive gases, electromagnetic radiation, etc.
- Make sure the device is securely installed or placed on a flat surface to prevent falling.
- Unless otherwise specified, do not stack devices.
- Ensure good ventilation in the operating environment. Do not cover the vents on the device. Allow adequate space for ventilation.
- Protect the device from liquid of any kind.
- Make sure the power supply provides a stable voltage that meets the power requirements of the device. Make sure the power supply's output power exceeds the total maximum power of all the connected devices.
- Take proper waterproof measures in accordance with requirements before using the device outdoors.
- Using the device may involve the collection of personal information such as face, fingerprint, license plate number, email, phone number, GPS. Please abide by your local laws and regulations while using the device.

Mounting the Camera Installing Micro SD Card (Optional)



1. Open the bottom cover by loosening screws.
2. Insert the Micro SD card (purchased separately) into the camera.
3. Do not hot plug the Micro SD card after it is inserted. Otherwise, the camera or the Micro SD card might be damaged.

Installing Waterproof Connector (Optional)

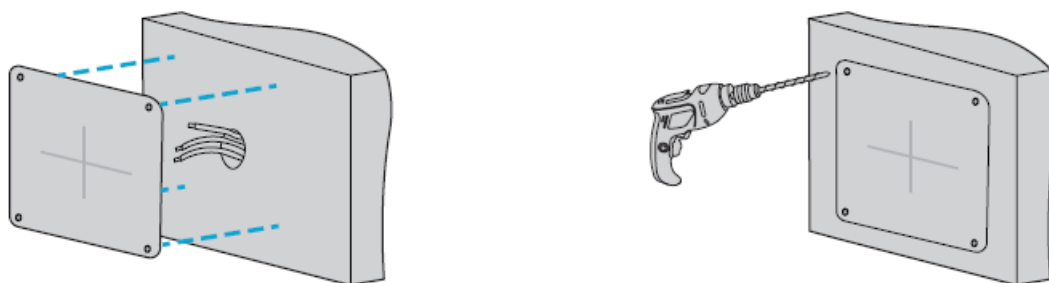


Install the supplied waterproof components to the Ethernet cable in sequence.

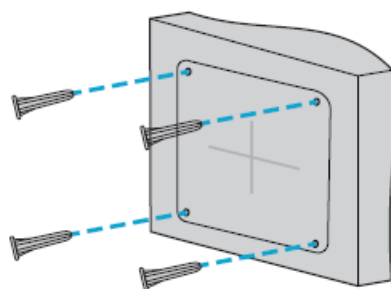
NOTE:

Please use self-adhesive waterproof tape (purchased separately) to protect the cables.

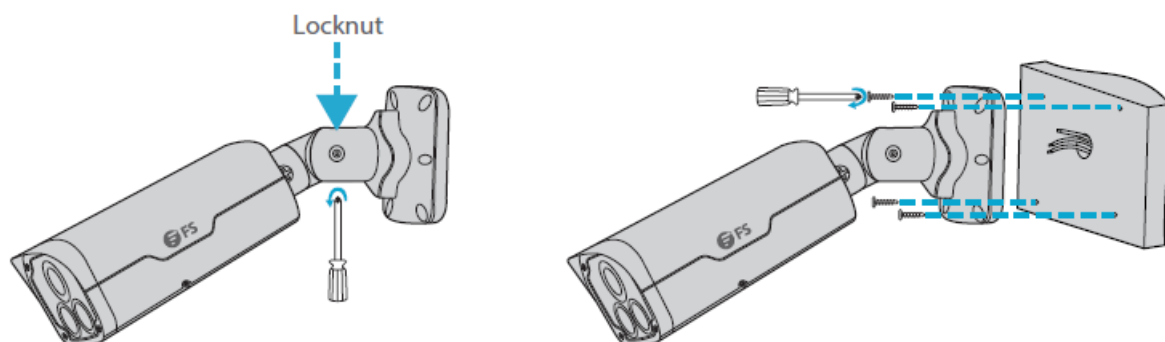
Wall Mounting



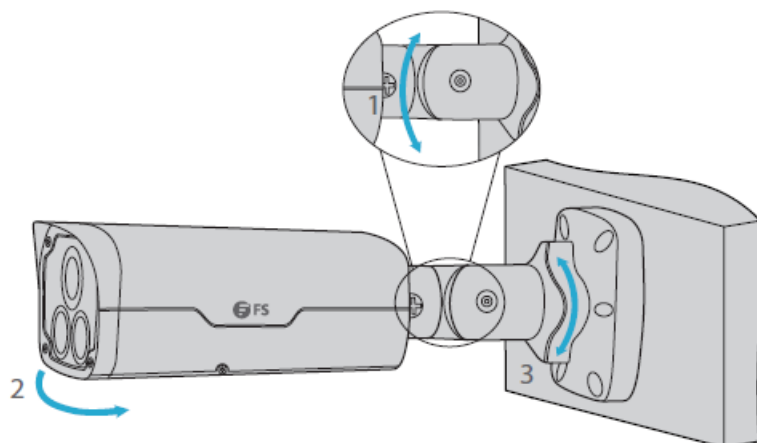
1. Locate the positions of the holes by pasting the installation position map on the wall and aligning the cross center to the hole in the wall.
2. Drill holes with a diameter of 6 – 6.5 mm and a depth of 30 mm in the marked locations.



3. Knock the plastic rivets of self-tapping screws into the guide holes and ensure that they are tightened up.



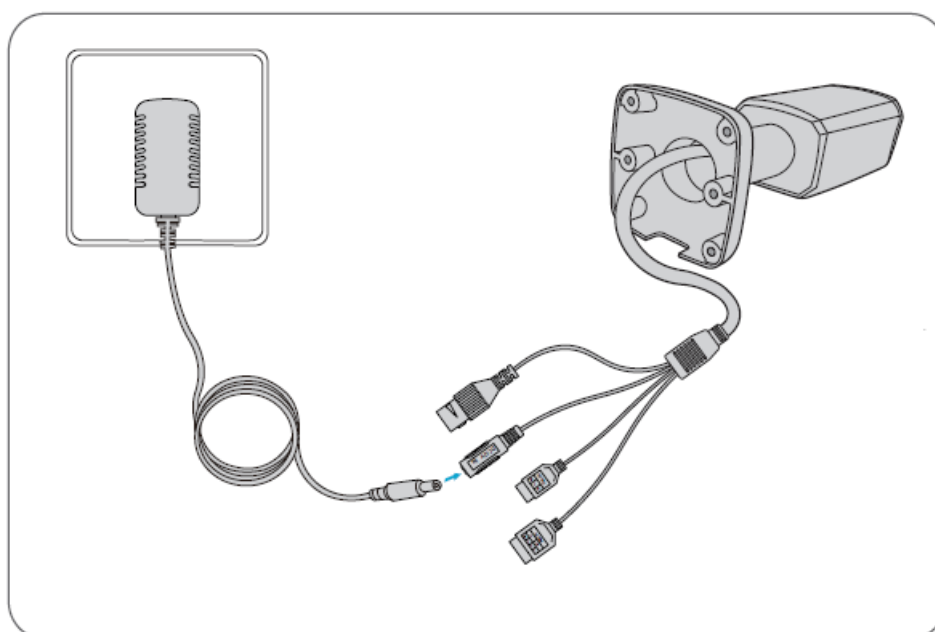
4. Screw the locknut to loosen the universal joint, then secure the camera to the wall by leading the self-tapping screws through the guide holes in the base and fix them to the wall by using a screwdriver.



5. Adjust the opening of the universal joints to get the desired monitoring direction, then tighten the locknut.

Connecting the Power

PoE Device



Use an Ethernet cable to connect the network interface of the camera to the PoE port on a PoE device, such as a PoE switch. Use the power adapter (purchased separately) to connect the power interface of the camera to the local power source.

Configuring the Camera

Step 1: Connect the computer to the camera on the same LAN. Step 2: Set the IP address of the computer to 192.168.1.x. ("x" is any number from 2 to 254.)

Internet Protocol Version 4 (TCP/IPv4) Properties

General

You can get IP settings assigned automatically if your network supports this capability. Otherwise, you need to ask your network administrator for the appropriate IP settings.

☐ Obtain an IP address automatically
☒ Use the following IP address:

IP address: 192 . 168 . 1 . 2
 Subnet mask: 255 . 255 . 255 . 0
 Default gateway: . . .

☐ Obtain DNS server address automatically
☒ Use the following DNS server addresses:

Preferred DNS server: . . .
 Alternate DNS server: . . .

☐ Validate settings upon exit

Advanced...

OK Cancel

Step 3: Open a browser, type `http://192.168.1.13`, and enter the default username and password, `admin/admin`.

IPC501-5M-B

Username: admin

Password: *****

☒ Live View

Login Reset

Step 4: Click Login to display the web-based configuration page

Note

You may need to install a plug-in at your first login. Please follow the on-screen instructions to complete the installation and then open the browser again to log in.

Support and Other Resources


- Download <https://www.fs.com/download.html>
- Help Center https://www.fs.com/service/help_center.html
- Contact Us https://www.fs.com/contact_us.html

Product Warranty

FS ensures our customers that any damage or faulty items due to our workmanship, we will offer a free return within 30 Days from the day you receive your goods. This excludes any custom-made items or tailored solutions.




- Warranty: Bullet network cameras enjoy 2 years limited warranty against defects in materials or workmanship. For more details about the warranty, please check at <https://www.fs.com/policies/warranty.html>
- Return: If you want to return item(s), information on how to return can be found at https://www.fs.com/policies/day_return_policy.html

Documents / Resources

 <small>Bullet Network Camera IPC201-2M-B, IPC501-5M-B, IPC305-5M-B Quality Standard Certificate</small>	FS IPC201-2M-B Bullet Network Camera [pdf] User Guide IPC201-2M-B, IPC501-5M-B, IPC305-5M-B, Bullet Network Camera
---	---

References

-  [FS.com - Data Center, Enterprise, Telecom](#)
-  [Quality Certification - FS.com](#)
-  [Ein weltweit führender Anbieter von Hochgeschwindigkeits-Konnektivitätsgeräten und -lösungen. - FS.com Deutschland](#)
-  [Fournisseur leader de solutions et matériels de connectivité à haut débit - FS France](#)
-  [FS.com - Data Center, Enterprise, Telecom](#)
-  [Contact Us - FS.com](#)
-  [Kontakt - FS.com Deutschland](#)
-  [Technische Dokumente - FS.com Deutschland](#)
-  [Rückgaberecht - FS.com Deutschland](#)
-  [Ein weltweit führender Anbieter von Hochgeschwindigkeits-Konnektivitätsgeräten und -lösungen. - FS.com Deutschland](#)
-  [Hilfezentrum - FS.com Deutschland](#)
-  [Technical Documents - FS.com](#)
-  [Comment Nous Contacter - FS.com France](#)
-  [Documents techniques - FS.com France](#)
-  [Fournisseur leader de solutions et matériels de connectivité à haut débit - FS.com France](#)
-  [Centre d'aide - FS.com France](#)

-  [Return Policy - FS.com](#)
-  [Products Warranty - FS.com](#)
-  [Help Center - FS.com](#)

Manuals+