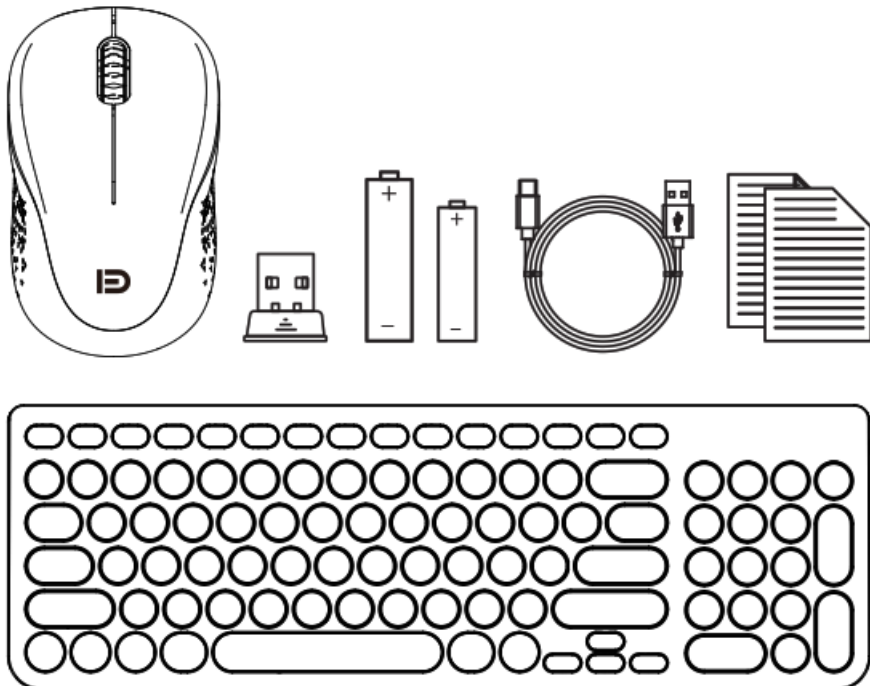




FD iK6630M 24Ghz Wireless Keyboard and Mouse Combo User Guide

[Home](#) » [FD](#) » FD iK6630M 24Ghz Wireless Keyboard and Mouse Combo User Guide 

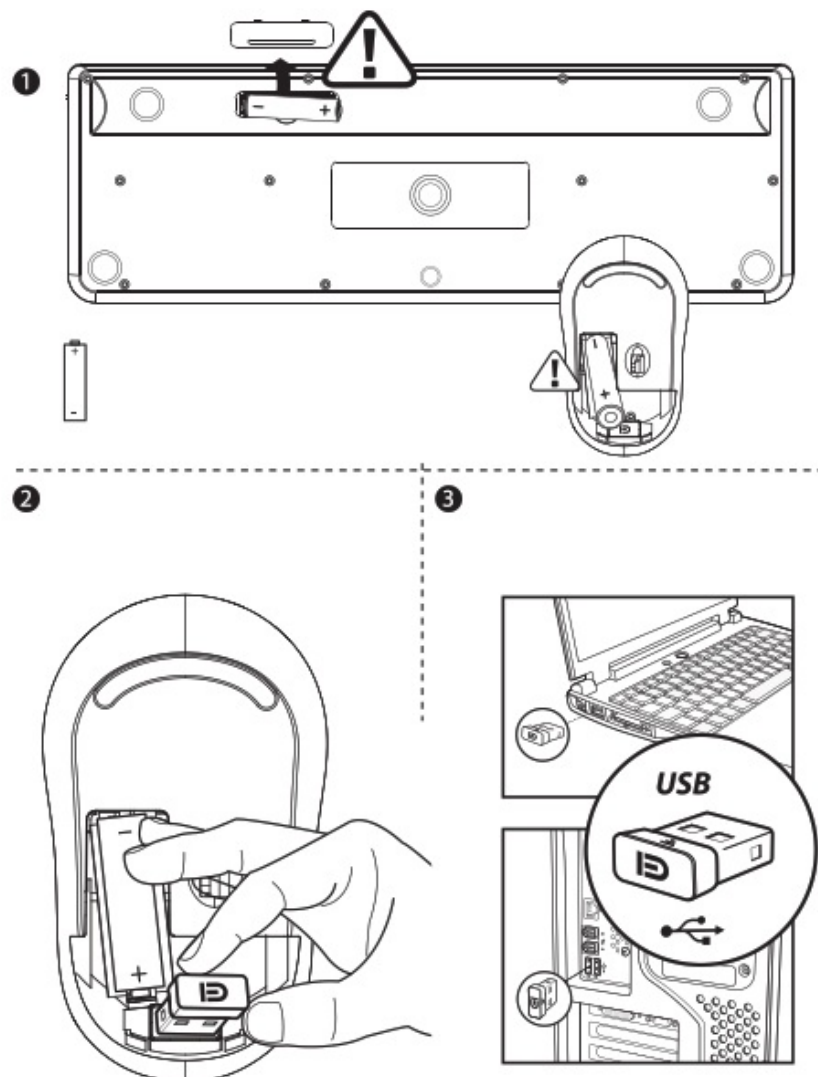


Contents

- 1 Package desktop:
- 2 Charging function guidance
- 3 Data parameter
- 4 System requirements
- 5 Warranty term
- 6 Security reminder
- 7 Warranty restrictions
- 8 Compensation,
- 9 FCC Statement
- 10 Documents / Resources
- 11 Related Posts

Package desktop:

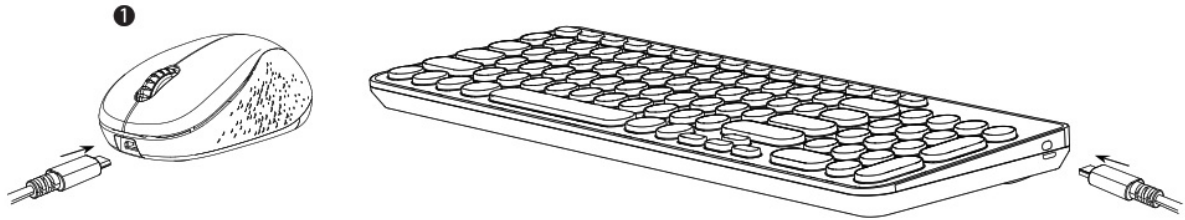
- FD Wireless package
- Nano Receiver
- 1 AA alkaline batteries
- Quick start guide
- USB charging line



1. Open the battery cover, insert the battery (positive and negative correct).
2. Remove the receiver.
3. Insert the computer USB interface

Charging function guidance

1. When the power is low, use the USB cable delivered to connect the mouse or keyboard charging interface.



2. The charging cable is connected to the USB of the computer. When charging, the red light of the mouse wheel and keyboard charging low voltage indicator light will light up, and the charging process will be about 4-5 hours (because of different charging environments, the charging time will be different), and the red light will go out after charging.

Data parameter

Mouse basic parameters:

Wireless data transmission: 1Mbps

Frequency: 2405MHz-2476MHz

Channel 16

Engine: Optical

Distance: 20m

Working voltage: 1.5V

Working current 11 mA

Key life of the mouse: Over 3 million times

Mouse size: 94x57x38.5mm

Mouse tracking performance:

Mouse resolution: 1500DPI

Rate of return of mouse: 250Hz

Current of mouse step work:

Working current = 11 mA

Standby current = 3mA

Sleep current = 50uA

State of no receiving < 30uA

Keyboard basic parameters:

Wireless data transmission: 1Mbps

Frequency: 2405MHz-2476MHz

Channel 16 Distance: 20m

Working voltage: 1.5V

Working current 3mA

Key life of the keyboard: Cover 5 million times

Keyboard size: 381 x126x31mm

Current of Keyboard step work:

Working current = 1.5mA
Standby current = 6uA
Sleep current = 6uA
State of no receiving = 6uA

System combination :

IBM or compatible calculator
Windows: 2000/ME/XP(X-64)/Vista/7/8/10 Mac OS X(More than V10.4)
Workable USB port
Windows:2000/ME/XP (X64)/Vista/7/8/10
Mac OS X (V10.41j,_h)

System requirements**System combination**

IBM or compatible calculator
Windows:2000/XP(X64)/Vista/7/8/10
Mac OS X(More than V10.4)
A workable USB interface

IBM

Windows:2000/XP(X64)/Vista/7/8/10
Mac OS X(More than V10.4)

IBM

Windows:2000/XP(X64)/Vista/7/8/10
Mac OS X(More than V10.4) USB

IBM

Windows:2000/XP(X64)/Vista/7/8/10
Mac OS X(More than V10.4)

Warranty term

The equipment is provided with a limited product hardware warranty service for 1 year from the date of purchase.

Security reminder

Please do not open or repair the equipment. Please do not use the equipment in a wet environment. Please wipe the equipment using a dry cloth.

Warranty restrictions

The limited warranty doesn't cover the problems or damages due to the following causes: (1) Accidents, misuse, improper operation, or any unauthorized maintenance, modification, or dismantling; (2) Improper operation or maintenance, violation of the product description during the application or improper connection of voltage source;

Compensation,

1. In case of quality problems within 7 days, according to the "three guarantees" stipulated by the country, the hardware will be returned to the purchase place under the intact appearance and packaging of the product, and the payment for the bought hardware will be returned when presenting the valid voucher for a purchase.
2. In case of quality problems within 60 days, the hardware product can be replaced at the purchase place or

repaired at the specified repairing block, and the expiration date of the replaced hardware is the remaining days.

3. In case of quality problems within 1 year, the product can be repaired at the specified repairing block.

warranty period	
Date of purchase	
Where to buy	
Product Serial Number	
Product Number	
stamp	

date	Maintenance situation

FCC Statement

This equipment has been tested and found to comply with the limits for a Class B digital device, pursuant to part 15 of the FCC Rules. These limits are designed to provide reasonable protection against harmful interference in a residential installation. This equipment generates, uses and can radiate radio frequency energy and, if not installed and used in accordance with the instructions, may cause harmful interference to radio communications. However, there is no guarantee that interference will not occur in a particular installation. If this equipment does cause harmful interference to radio or television reception, which can be determined by turning the equipment off and on, the user is encouraged to try to correct the interference by one or more of the following measures:

- Reorient or relocate the receiving antenna.
- Increase the separation between the equipment and receiver.
- Connect the equipment into an outlet on a circuit different from that to which the receiver is connected.
- Consult the dealer or an experienced radio/TV technician for help.

Caution: Any changes or modifications to this device not explicitly approved by the manufacturer could void your authority to operate this equipment. This device complies with part 15 of the FCC Rules. Operation is subject to the following two conditions: (1) This device may not cause harmful interference, and (2) this device must accept any interference received, including interference that may cause undesired operation.

RF Exposure Information

The device has been evaluated to meet general RF exposure requirements. The device can be used in portable exposure conditions without restriction.



iK6630M
FD Product user guide



Company website

<http://www.szforter.com>

Operator: Dongguan Zhenghao Electronic Technology Co. LTD

Address: Room 401, Building 966, Zhenxing Avenue, XieGang Town, Dongguan, Guangdong, China Service


Tel: +86-400-915-2528 Web: www.szforter.com

Mouse Executive Standards: GUT 26245-2010

Keyboard Executive Standards: GUT 14081-2010

MADE IN CHINA

Documents / Resources

	<p>FD iK6630M 24Ghz Wireless Keyboard and Mouse Combo [pdf] User Guide IK6630M, 2A5VJ-IK6630M, 2A5VJIK6630M, iK6630M 24Ghz Wireless Keyboard and Mouse Combo, 24Ghz Wireless Keyboard and Mouse Combo</p>
---	---