



## Do SLASH3, SLASH6 Quad DAC Wireless Receiver User Manual

[Home](#) » [DO](#) » Do SLASH3, SLASH6 Quad DAC Wireless Receiver User Manual 



SLASH3, SLASH6 Quad DAC Wireless Receiver  
User Manual



QUAD DAC  
Wireless Receiver



made in Korea DO-Inc. #701, 81. Sambong-to. Jongno-gu. Seoul, Republic of Korea do-bluetooth.com

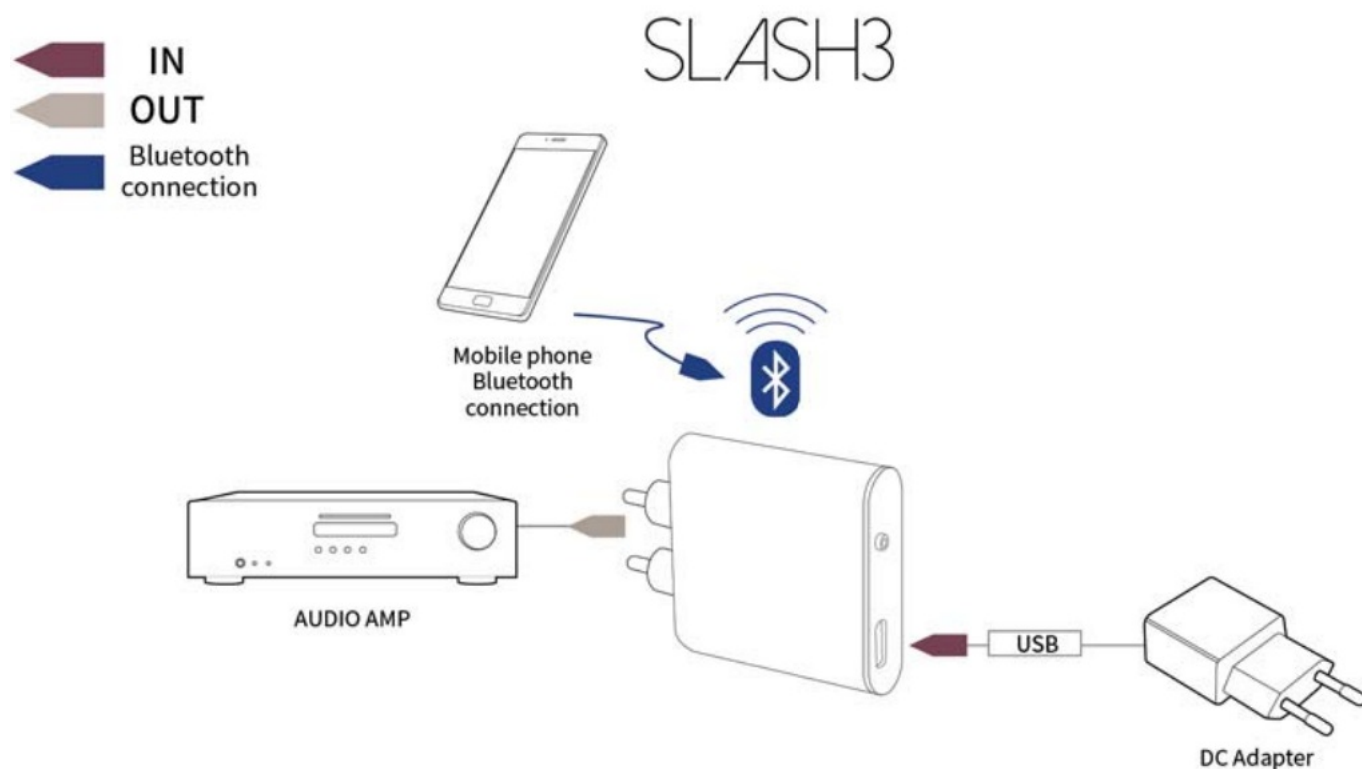
### Caution

Any changes or modifications (including the antenna) made to this device that are not expressly approved by the manufacturer may void the user's authority to operate the equipment.

### RF exposure

To comply with FCC RF exposure compliance requirements, a separation distance of at least 20 cm must be maintained between the antenna of this device and all persons

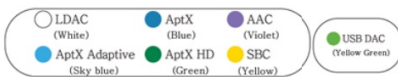
This device must not be co-located operation in conjunction with any other antenna or transmitter This equipment complies with FCC



### Contents

- [1 SPEC & FEATURE](#)
- [2 CABLES](#)
- [3 USAGE](#)
- [4 Documents / Resources](#)
- [5 Related Posts](#)

## SPEC & FEATURE

Purpose of Use	(Hi-Fi Audio) (Hi-Fi Audio USB DAC (PC F )
Bluetooth Chipset	Qualcomm QC 5125
Bluetooth Version	5.1
Bluetooth profile	A2DP,AVRCP
Codec	LDAC, ADtX Adaptive, AptX HD, AptX LL, AptX, AAC, SBC
Working Range	Within 10 meter
Quad DACES9219	Quad DAC ES9219
SNR	130db
THD+N	-112db
Frequency Response	20 – 20,000Hz
OP Amp(LPF)	0
Isolator	—
USB DAC	-96Khz, 24Bit
Audio Out put	RCA2 7Vrms) RGAG2.7Vims)
Headphone Output	3.5mm(1.0Vrms)
Optical Input	— 3.5mm(1.0Vrms)
Optical Input	— 3.5mm
Optical Output	— 3.5mm
power	US8 Tye-¢
Bluetooth Codec LED	
Components	SLASH BODY, ADAPTOR, US8 (TYPE C CABLE

This equipment has been tested and found to comply with the limits for a Class B digital device, pursuant to part 15 of the FCC Rules, These limits are designed to provide reasonable protection against harmful interference in a residential installation.

This equipment generates uses and can radiate radio frequency energy and. if not installed and used in accordance with the instructions, may cause harmful interference to radio communications. However, there is no guarantee that interference will not occur in a particular installation. If this equipment does cause harmful interference to radio or television reception, which can be determined by turning the equipment off and on, the user is encouraged to try to correct the interference by one or more of the following measures;

- Current or relocate the receiving antenna
- Increase the separation between the equipment and receiver,
- Connect the equipment to an outlet on a circuit different from that to which the receiver is connected.

- Consult the dealer or an experienced radio/TV technician for help.

## CABLES

**1** USB Type A

USB Type C



**2** DC Adapter

USB Type C



**3** Aux, Line IN, CD, Tuner, Tape

SLASH 3,5,6 (RCA output)



**4** Headphone output (3.5mm)

Headphone



**5** Optical input/output

TV, CD Optical Output/DAC,  
Audio Amplifier Optical Input



**6** Audio cable (3.5mm)



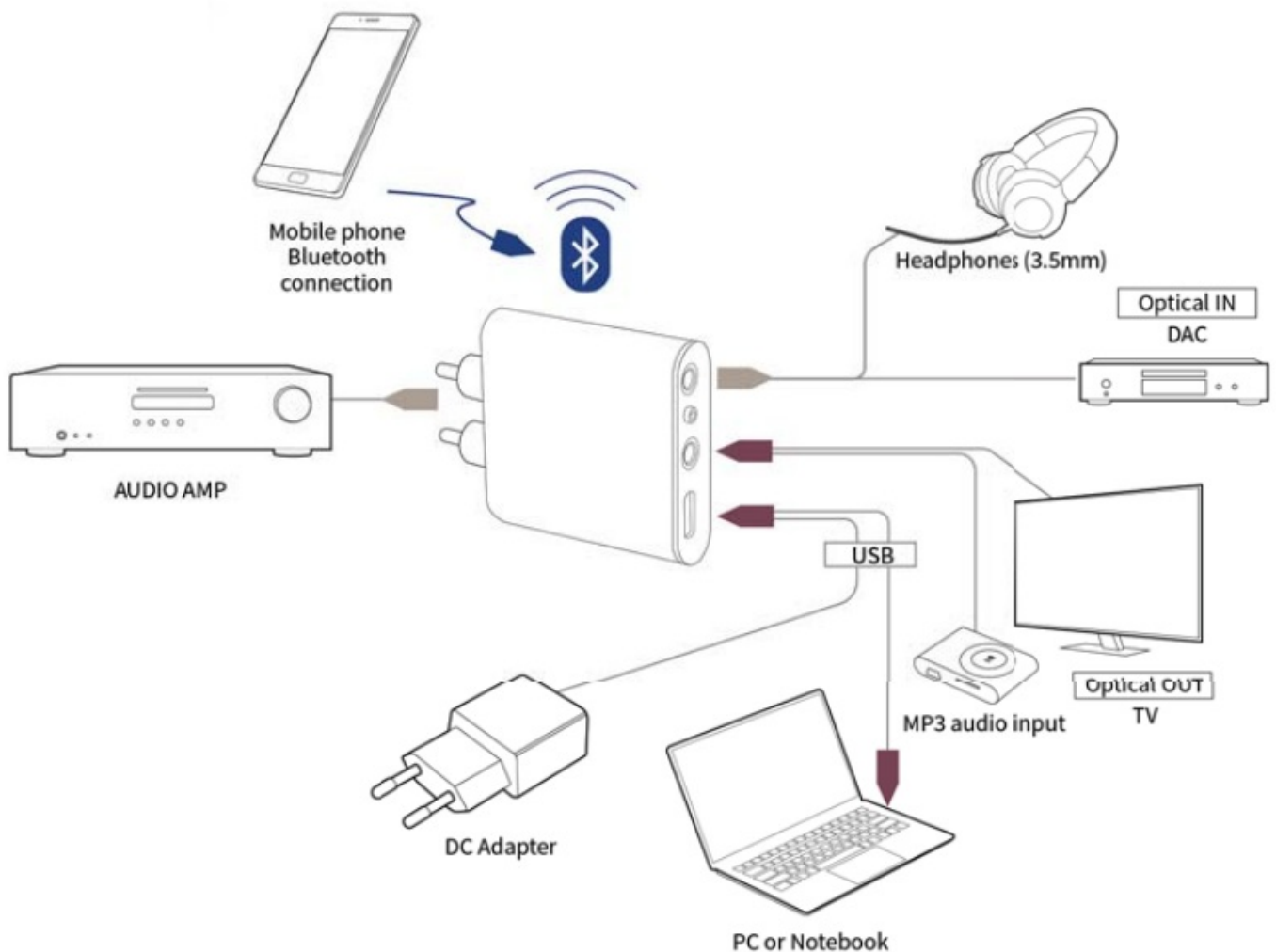
### Compliance Statement Part 15.19

This device complies with Part 15 of the FCC Rules. Operation is subject to the following two conditions.

1. This device may not cause harmful interference, and
2. This device must accept any interference received, including interference that may cause undesired operation.

### Warning (Part 15.21)

Changes or modifications not expressly approved by the party responsible for compliance could void the user's authority to operate the equipment.



## USAGE

Using other products instead of genuine DO USB Cables and DC Adapters may cause malfunction.

### Power Supply at Home

1. To supply power to SLASH, connect the DC Adapter and USB cable included in the product box to the SLASH.  
[2]
2. Connect the RCA output of SLASH to the external input (AUX, Line in, CD, Tuner, Tape) of the audio amplifier.  
[Audio amplifier must be turned off when you connect the SLASH][3/

### Listening to music through Bluetooth connection with your smartphone

1. Search for a Bluetooth device in the settings window of your smartphone and click [SLASH X] to connect. [(x refers to SLASH series 4.6]
2. If you play music on your smartphone, you can listen to the music from the audio amplifier.

### **Listening to music with headphones (SLASH6)**

1. You can connect headphones to listen to music at the same time. [4]

### **Listening to audio externally with optical output (SLASH6)**

1. If you connect the optical output of SLASH and an external device (integrated amplifier, DAC, and a device capable of optical input), you can listen to music at the same time. [4]
2. You can listen to music simultaneously with the audio amplifier, headphones, and optical output

### **Listening to audio with optical input (SLASH6)**

1. Connect the optical output of the TV or CD player to the optical input of the SLASH [5]
2. Turn on the TV or click the play button on the CD Player.
3. You can listen to music on TV or a CD Player
4. The digital output format of the TV or CD Player must be set to PCM

### **Listening to the audio through an analog connection (SLASH6)**

1. Connect the analog output terminal of an external device such as an MP3 or CD player to the analog input terminal of the SLASH[6]
2. If you click the play button of the MP3 or CD Player, you can listen to music from the audio amplifier.

### **Listening to high-quality music with USB-DAC [PC-Fi] (SLASH6)**

1. Connect the computer's USB Port to the SLASH6.[I]
2. When you start audio playback on your computer, you can listen to music from the audio amplifier connected to the SLASH 6,
3. If SLASH is connected to a Bluetooth device, you need to stop playing the Bluetooth device.

### **Priority of audio devices connected to SLASH6**


1. Priority of Audio devices connected to Slash 6 is D) Bluetooth 2) USB DAC (PC-Fi) 3) Analog input 4) Optical connection
2. You can not listen to music played on devices connected to the USB DAC or Optical connection while being played on the Bluetooth of the smartphone.
3. Optical connection output is available for audio output simultaneously with RCA

### **Warranty**

All Do products are warranted by to the original purchaser against defects in workmanship and material for a period of 12 months from the date of delivery. This warranty is void for parts damaged from mishandling faulty

installation or adjustment, improper use, accident, negligence, and natural disaster.

**Documents / Resources**

	<p><a href="#">Do SLASH3, SLASH6 Quad DAC Wireless Receiver</a> [pdf] User Manual</p> <p>SLASH, 2A8R2-SLASH, 2A8R2SLASH, SLASH3 SLASH6 Quad DAC Wireless Receiver, SLASH3, SLASH6, SLASH6 Quad DAC Wireless Receiver, Quad DAC Wireless Receiver, DAC Wireless Receiver, Quad Wireless Receiver, Wireless Receiver, DAC Quad Receiver, Quad Receiver, DAC Receiver, Receiver</p>
---	--