



CGPTC20A PTC Fan Heater User Manual

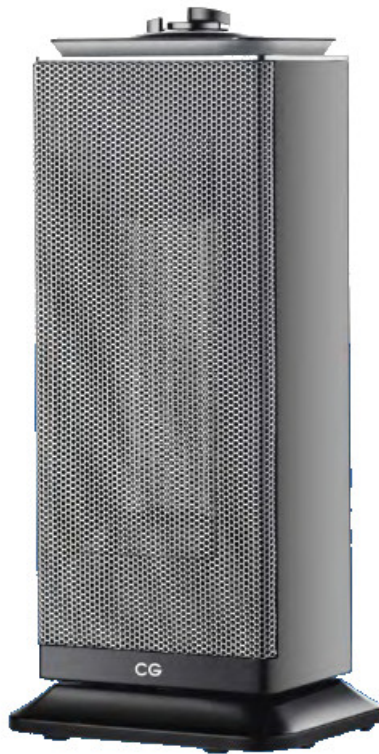
[Home](#) » [CG](#) » CGPTC20A PTC Fan Heater User Manual 



PTC Heater INSTRUCTION MANUAL

Read this manual carefully before operation

Pictures in this manual are for reference only, the product in kind prevail.



Model: CGPTC20A

This instruction manual contains important information & recommendations that we would ask you to comply With to obtain best results from your products.

Contents

- 1 INTRODUCTION**
- 2 IMPORTANT SAFETY INFORMATION**
- 3 FEATURES**
- 4 OPERATION**
- 5 OVERHEAT PROTECTION**
- 6 CLEANING & MAINTENANCE**
- 7 SPECIFICATIONS**
- 8 Documents / Resources**
 - 8.1 References**

INTRODUCTION

- Before using your new heater, please carefully read through the following instructions. KEEP THIS BOOKLET IN A SAFE PLACE SO THAT YOU MAY CONSULT IT LATER.
- After removing the packaging, make sure that the appliance is in good condition.
- The packaging materials may contain plastic, nails etc., which may be hazardous and therefore should not be left within the reach of children.

IMPORTANT SAFETY INFORMATION

1. Check whether or not the local power supply mains match the appliance electric rating printed on the label before operation.

2. Children should be supervised to ensure that they do not play with the appliance.
3. If the appliance is damaged, do not use it any more.
4. Ensure the power supply to the socket into which the heater is plugged is in accordance with the rating label on the heater.
5. When the appliance is not in operation, please remove plug from supply mains.
6. The plug must be removed from the socket-outlet before cleaning or maintaining the appliance
7. Don't remove the plug by pulling the power cord.
8. Avoid the use of an extension cord as this may overheat and cause a risk of fire.
9. Keep the mains lead away from the hot body of the heater.
10. WARNING: In order to avoid overheating, do not cover heater.
11. Don't use this heater in the immediate surroundings of a bath, a shower or a swimming pool. Never locate the heater where it may fall into bathtub or other water container.
12. The device is intended for household use. Do not use outdoors.
13. Do not cover or obstruct any of the heat outlet grilles or the air intake openings of the heater.
14. Always ensure that the heater is not positioned close to curtains or furniture as this could create a fire hazard.
15. The heater must not be located immediately below an electrical socket-outlet.
16. Do not insert any object through the heat outlet or air intake grilles of the heater.
17. Do not place this heater near flammable materials, surfaces or substances, as there may be a risk of fire.
18. Particular care should be taken when the heater is situated in areas occupied by children or invalids.
19. Always unplug the heater when moving it.
20. The room which is to be heated should not contain any easy inflammable materials (e.g., petrol, solvents, spray canisters etc.) or other easy combustible materials (e.g., wood or paper). Keep such materials away from equipment. Risk of fire!!
21. Do not operate the heater with a damaged cord or plug, or after the heater malfunctions, has been dropped, or damaged in any manner.
22. If the supply cord is damaged, it must be replaced by the manufacturer or its service agent or a similarly qualified person in order to avoid a hazard.
23. This appliance is not intended for use by persons (including children) with reduced physical, sensory or mental capabilities, or lack of experience and knowledge, unless they have been given supervision or instruction concerning use of the appliance by a person responsible for their safety.
24. Children should be supervised to ensure that they do not play with the appliance

FEATURES



1. Heating Power Switch
2. Adjustable Thermostat
3. Handle
4. Oscillation Switch

OPERATION

1. Before inserting the plug into an electrical outlet, make sure that the electrical supply in your area matches that on the rating label on the unit.
2. Carefully remove the heater from the plastic bag and the carton.
3. Place the heater on a firm level surface
4. Set the Heating power switch to "0". Plug the cord set into a 220-240V~ 50/60Hz, AC source.
5. This appliance is equipped with a 4-position Heating power switch

| SYMBOL | FUNCTION |
|--------|------------------|
| 0 | OFF |
| ⋈ | BLOW COOLING AIR |
| I | HALF HEAT OUTPUT |
| II | FULL HEAT OUTPUT |

6. Set the rotary switch to maximum for fast warm up of a room. Once The room is comfortable, select a lower setting to reduce electrical consumption and to prevent the room from becoming too warm.
Adjust the thermostat to maximum and select the desired power setting. Once the room is comfortable, rotate the thermostat counterclockwise, until the heater shuts off. The thermostat will now maintain the temperature by cycling the heater on or off. During particularly cold weather, the low power setting may be insufficient to satisfy the thermostat. Select a higher setting for these periods.

Before switching off and better work for 5-10 second in cool condition.

7. Adjust the thermostat to maximum and select the desired power setting. Once the room is comfortable, rotate the thermostat counterclockwise, until the heater shuts off. The thermostat will now maintain the temperature by cycling the heater on or off. During particularly cold weather, the low power setting may be insufficient to satisfy the thermostat. Select a higher setting for these periods.
8. Before switching off, wait for 5-10 second in cool condition.

SAFETY TIP-OVER SWITCH

The appliance has safety tip-over switch for safe protected. Make the user away from fire and other damage.

OVERHEAT PROTECTION

This heater is protected with an overheat protection that switches off the appliance automatically in case of overheating. For example: due to the total or partial obstruction of the vents. In this case, unplug the appliance, wait about 30 minutes for it to cool and remove the object which is obstructing the vents. Then switch it back on as described above. The appliance should now operate normally. If the problem persists, please contact Customer Service for assistance.

CLEANING & MAINTENANCE

- Before undertaking any cleaning or maintenance on the appliance, disconnect it from the power supply.
- For cleaning it is recommended to use a soft moist rag and neutral detergent. Do not use an abrasive cloth or devices which could affect the appearance of the appliance. Check that the hot air outlet and the ventilation Inlet are free of dust and dirt.

During cleaning, be careful not to touch the heating elements.

- To open the filter on the back for cleaning, press the top of plastic net at back.
- In case of breakdown and/or poor functioning of the appliance, disconnect the appliance from the power supply and contact an authorised repairer.

SPECIFICATIONS

Power Supply: AC 220-240V ~ 50/60Hz

Power Consumption: 2000W

NOTE: As a result of continual improvements, the design and specifications of the product within may differ slightly to the unit illustrated on the packaging.

Environment

Meaning of the crossed-out wheeled dustbin:



Do not dispose of electrical appliances as unsorted municipal waste, use separate collection facilities. Contact your local council for information regarding the collection systems available.

If electrical appliances are disposed of in landfills or dumps, hazardous substances can leak into the ground and get into the food chain, damaging your health and well-being.

A Quality Product Of

CG CHAUDHARY®
Touching life everyday



<https://www.cginspiringlife.com/>



IMPORTANT INFORMATION FOR CORRECT DISPOSAL OF THE PRODUCT IN ACCORDANCE WITH EC DIRECTIVE 2002/96/EC.


At the end of its working life, the product must not be disposed of as urban waste.

It must be taken to a special local authority differentiated waste collection centre or to a dealer providing this service.

Disposing of a household appliance separately avoids possible negative consequences for the environment and health deriving from inappropriate disposal and enables the constituent materials to be recovered to obtain significant savings in energy and resources. As a reminder of the need to dispose of household appliances separately, the product is marked with a crossed-out wheeled dustbin.

Visit us at: www.cginspiringlife.com

Documents / Resources

| | |
|---|---|
|  | <p>CG CGPTC20A PTC Fan Heater [pdf] User Manual CGPTC20A PTC Fan Heater, CGPTC20A, PTC Fan Heater, Fan Heater, Heater</p> |
|---|---|

References

- [User Manual](#)