

AMP RF2W15 Channel Remote Control



AMP RF2W15 Channel Remote Control User Guide

[Home](#) » [AMP](#) » AMP RF2W15 Channel Remote Control User Guide 

Contents

- [1 AMP RF2W15 Channel Remote Control](#)
- [2 Product Usage Instructions](#)
- [3 FAQs](#)
- [4 Specifications](#)
- [5 Declarations](#)
- [6 Safety Instructions](#)
- [7 Important Safety Instructions](#)
- [8 Remote Overview](#)
- [9 Remote Function](#)
- [10 Initial Set-up](#)
- [11 Adjust Limits](#)
- [12 Quick Index](#)
- [13 Troubleshooting](#)
- [14 Documents / Resources](#)
 - [14.1 References](#)

AMP

AMP RF2W15 Channel Remote Control



Product Usage Instructions

- **Initial Set-up**
 - Follow the manufacturer's instructions to set up the motorization system. Ensure the motor is mounted in a horizontal position.
- **Adjust Limits**
 - Use the remote control to adjust the upper and lower limits of the motorized system for optimal operation.
- **Favorite Position**
 - Program the remote to save your favourite position for easy access.
- **Add or Remove Additional Remote**
 - Follow the programming guide to add or remove additional remotes for controlling the motorization system.
- **Adjust Motor Speed**
 - Use the remote functions to adjust the speed of the motor as needed.
- **Roller or Sheer Mode**
 - Select between roller or sheer mode depending on your preferences using the remote control.

FAQs

- **Q: Can children play with the device?**
 - **A:** No, children should not play with the device for safety reasons.
- **Q: What should I do if the power cable is damaged?**
 - **A:** Do not use the device if the power cable or connector is damaged. Contact a professional for repair.

Specifications

- Up to 15 channels with 3V (CR2450) battery, magnetic holder included
- Channel 0 controls all shades assigned to remote; ability to hide extra channels
- Favorite position activated by quick touch of a button
- Locking feature prevent unwanted configuration changes

Declarations

U.S. Radio Frequency FCC Compliance

This device complies with Part 15 of the FCC Rules.

Operation is subject to the following two conditions:

1. This device may not cause harmful interference, and
2. This device must accept any interference received, including interference that may cause undesired operation.

This equipment has been tested and found to comply with the limits for a Class B digital device, under Part 15 of the FCC Rules. These limits are designed to provide reasonable protection against harmful interference in a residential installation. This equipment generates, uses, and can radiate radio frequency energy and, if not installed and used by the instructions, may cause harmful interference to radio communications. However, there is no guarantee that interference will not occur in a particular installation. If this equipment does cause harmful interference to radio or television reception, which can be determined by turning the equipment off and on, the user is encouraged to try to correct the interference by one or more of the following measures:

- Reorient or relocate the receiving antenna.
- Increase the separation between the equipment and the receiver.
- Connect the equipment to an outlet on a circuit different from that to which the receiver is connected.
- Consult the dealer or an experienced radio/TV technician for help.

Any Changes or modifications not expressly approved by the party responsible for compliance could void the user's authority to operate the equipment.

ISED RSS Warning:

This device complies with the Innovation, Science and Economic Development Canada licence-exempt RSS standard(s).

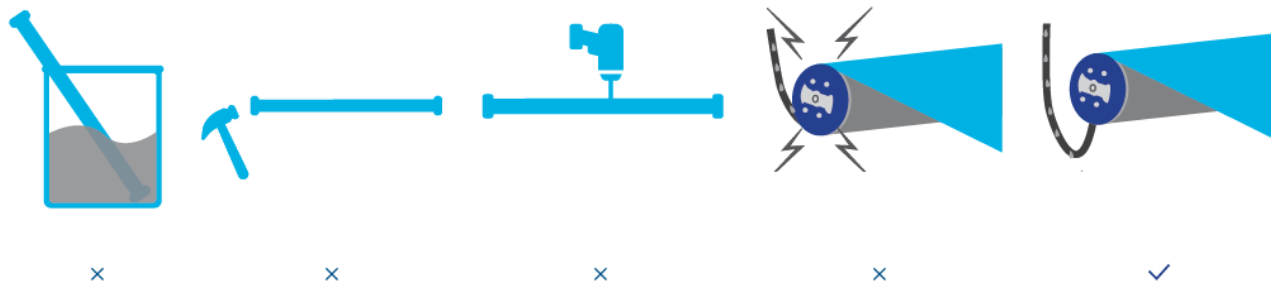
Operation is subject to the following two conditions:

1. this device may not cause interference, and
2. this device must accept any interference, including interference that may cause undesired operation of the device.

Safety Instructions

Attention

- Never drop, knock, drill or submerge the motor. Keep the power cable in the proper position as shown below.
- Read all safety instructions before installation.
- Incorrect installation can lead to serious injury and will void the manufacturer's liability and warranty.



Important Safety Instructions

1. Do not expose the motor to humid, damp, or extreme temperature conditions.
2. Do not drill into the motor.
3. Do not cut the antenna. Keep it clear from metal objects.
4. Do not allow children to play with this device.
5. If the power cable or connector is damaged, do not use it.
6. Ensure the correct crown and drive adaptor are used.
7. Ensure the power cable and aerial are clear and protected from moving parts.
8. Cable routed through walls should be properly isolated.
9. The motor is to be mounted in a horizontal position only.
10. Before installation, remove unnecessary cords and disable equipment not needed for powered operation.
11. Installation and programming should be performed by a qualified professional. Use or modification outside the scope of these instructions may void the warranty.



- Do not dispose of general waste. Please recycle batteries and damaged electrical products appropriately.

Remote Overview

1. Fields of Application



Roller



Sheer



Banded



Roman



Cellular/Honeycomb
Standard



Cellular/Honeycomb
Skylight



Tilt-Only
Horizontal

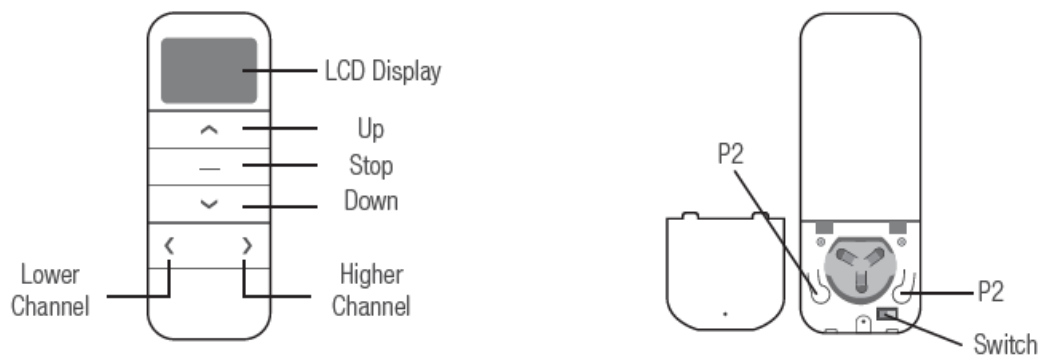


Narrow
Shade

2. Specification

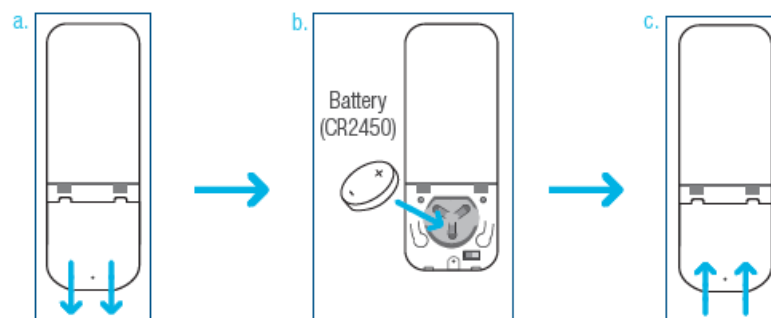
Voltage	3V (CR2450)
Radio Frequency	433.92 MHz Bi-directional
Transmitting Power	10 milliwatt
Operating Temperature	14°F to 122°F (-10°C to 50°C)
RF Modulation	FSK
Lock Function	Yes
IP Rating	IP20
Transmission Distance	up to 200m (outdoor)

3. Remote Button Instructions



4. Replace/Install CR2450 Battery

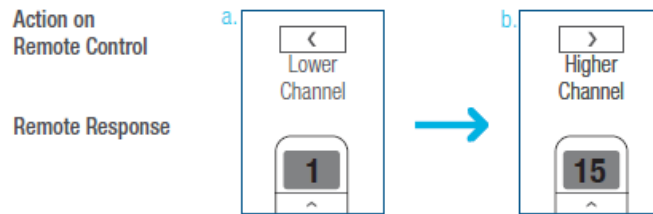
- **a.** Unscrew with the screwdriver then gently press down the cover.
- **b.** Install battery (CR2450) with positive (+) side facing up.
- **c.** Gently assemble the cover back and replace the screw with a screwdriver.



Remote Function

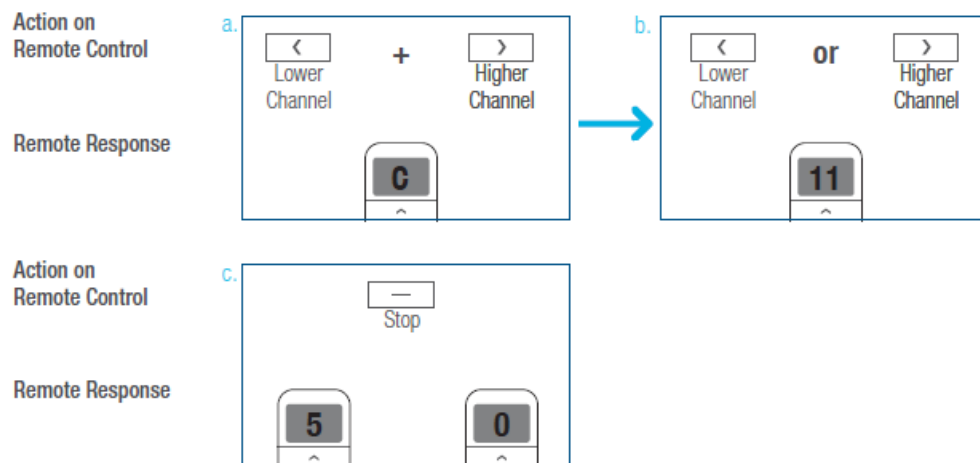
1. Channel Options

- **Select A Channel**
 - **a.** Press "<" button on the remote to select a lower channel.
 - **b.** Press ">" button on the remote to select a higher channel.



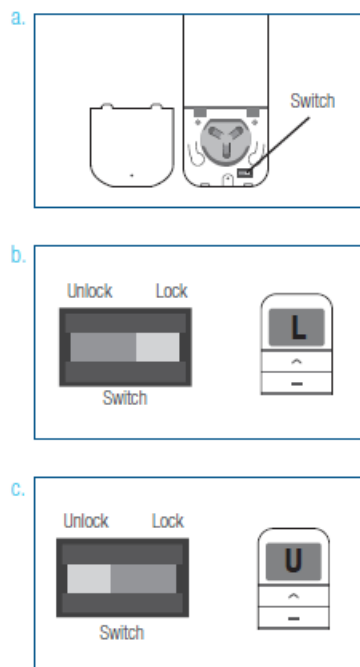
• Hide Unused Channels

- **a.** Press and Hold (about 3 sec) the “<” and “>” buttons simultaneously until the remote control displays “C” (channel).
- **b.** Press the “<” or “>” button to select the required quantity of channels (between 1 to 15).
- **c.** Press the “Stop” button to confirm the selection (the example shows a 5-channel selection). The LED will display “O” (OK) once to confirm selection.



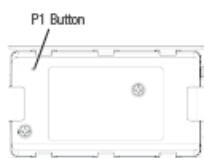
2. Advanced Setting – Disable Limit Setting

- **a.** Remove the cover from the backside of the remote, the lock switch is in the right corner.
- **b.** Move the switch to the “Lock” position to disable the following commands, remote will show “L” (lock):
 - Change Motor Direction
 - Setting the Upper and Lower Limit
 - Adjust Limit
 - Roller Mode or Sheer Mode
- **c.** Move the switch to the “Unlock” position to assess all remote functions, remote will show “U” (unlock).
 - This advanced feature is intended to be used after all shade programming is completed. User Mode will prevent accidental or unintended changing of limits.

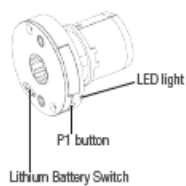


Button Instructions

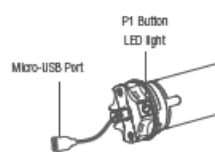
- P1 Button Location



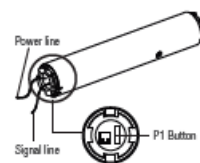
TILT



25B / 28B / 25BDC



35B



CEL

CEL and TILT motors DO NOT BEEP

- Button Instruction

① Test Motor

Happening as you press for 1 second



Press P1
Less than 1 sec.

when released

Motor Response: Wakes & Runs

② Activate Pairing Mode

Happening as you press for 2 seconds



Press P1
Approx. 2 sec.

Until Shade: Jog x1

when released

Motor Response: Beep x1

③ Sleep Mode

Happening as you press for 6 seconds



Press P1
Approx. 6 sec.

Until Shade: Jog x2

when released

Motor Response: Beep x2

④ Reverse Direction

Happening as you press for 10 seconds



Press P1
Approx. 10 sec.

Until Shade: Jog x3

when released

Motor Response: Beep x3

⑤ Reset To Factory Settings

Happening as you press for 14 seconds



Press P1
Approx. 14 sec.

Until Shade: Jog x4

when released

Motor Response: Beep x4

Initial Set-up

1. Pair / Unpair Remote Control

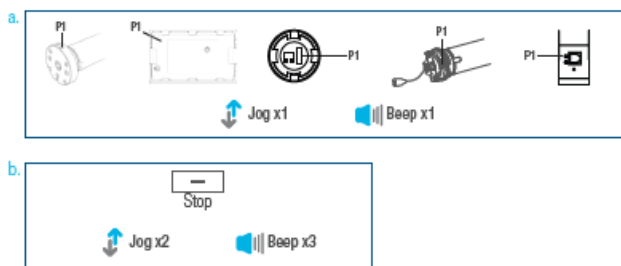
- **a.** Press “P1” button (about 2 sec) on the motor head until motor jogs x1 and beeps x1.
- **b.** In the next 10 secs, press and hold “Stop” button on the remote control until the motor jogs x2 and beep x3.
- Repeat the same procedure to unpair remote control.
 - **CEL and TILT motors DO NOT BEEP**

Action on
Motor

Motor Response

Action on
Remote Control

Motor Response



2. Change Motor Direction (if necessary)

- Press “Up” or “Down” button to check if the shade moves in the desired direction.
- If you need to reverse the direction, press and hold (about 2 sec) “Up” and “Down” buttons

simultaneously until motor jog x1 and beep x1.

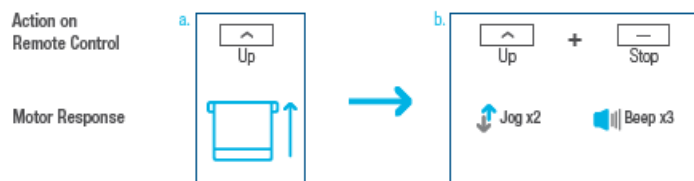
- The operation is only valid when there are no limits. If the motor has already set the upper and lower limit, then you can only switch direction by pressing P1 button (See P1 button instructions).



3. Setting the Upper and Lower Limits

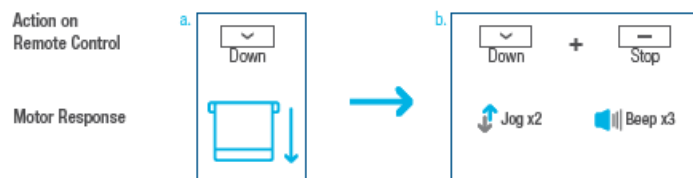
• Set Upper Limit

- a. Press “Up” button to raise the shade, then press “Stop” button when it is in the desired upper limit.
- b. Press and hold (about 5 sec) “Up” and “Stop” buttons simultaneously until motor jog x2 and beep x3.



• Set Lower Limit

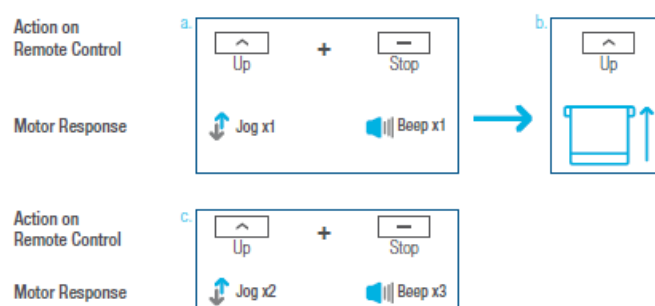
- a. Press “Down” button to lower the shade, then press “Stop” button when it is in the desired lower limit.
- b. Press and hold (about 5 sec) “Down” and “Stop” buttons simultaneously until motor jog x2 and beep x3.
- If you exit the limit setting status before you finish the limit settings, the motor will take the previous existing limits.



Adjust Limits

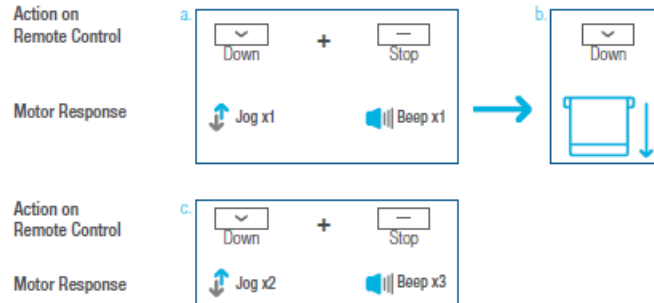
1. Adjust the Upper Limit

- a. Press and hold (about 5 sec) the “Up” and “Stop” buttons simultaneously until the motor jogs x1 and beep x1.
- b. Use the “Up” button to raise the shade to the desired highest position, and use the “Up” or “Down” button to do the final adjustment if necessary.
- c. Press and hold (about 5 sec) the “Up” and “Stop” buttons simultaneously until motor jog x2 and beep x3.



2. Adjust the Lower Limit

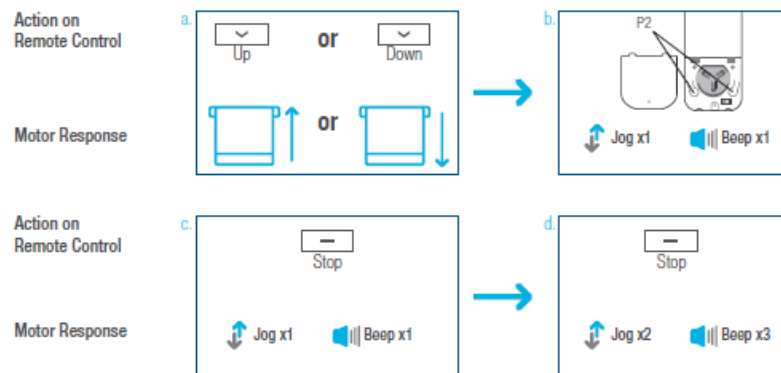
- **a.** Press and hold (about 5 sec) the “Down” and “Stop” buttons simultaneously until the motor jog x1 and beep x1.
- **b.** Use the “Down” button to lower the shade to the desired lowest position, and use the “Up” or “Down” button to do the final adjustment if necessary.
- **c.** Press and hold (about 5 sec) the “Down” and “Stop” buttons simultaneously until the motor jogs x2 and beeps x3.



Favorite Position

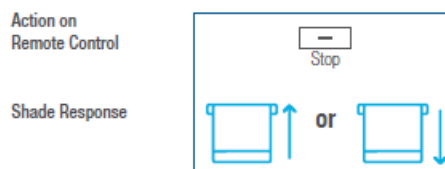
1. Set Favorite Position

- **a.** Use “Up” or “Down” button to move the shade to desired Favorite position.
- **b.** Press one “P2” button on the back of remote control until motor jog x1 and beep x1.
- **c.** Press “Stop” button until motor jog x1 and beep x1.
- **d.** Once more, press “Stop” button until motor jog x2 and beep x3.



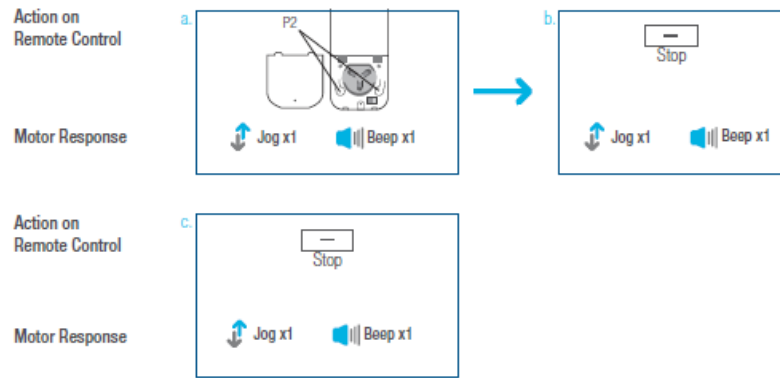
2. Send Shade to Favorite Position

- Press and hold (about 2 sec) “Stop” button, motor will move to Favorite position.



3. Delete Favorite Position

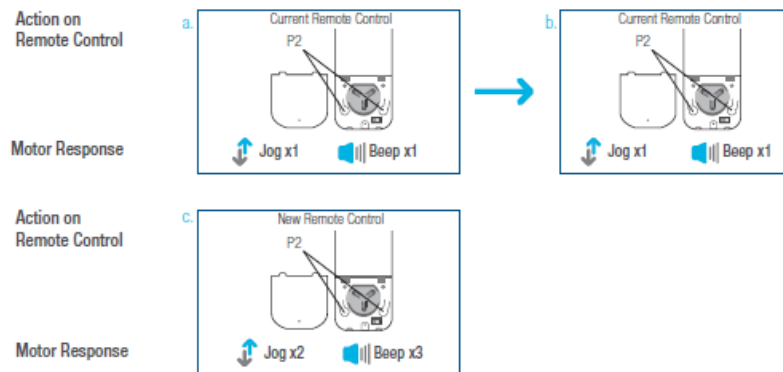
- **a.** Press one “P2” button until motor jog and beep x1.
- **b.** Press “Stop” button until motor jog and beep x1.
- **c.** Once more, press “Stop” button until motor jog x1 and long beep x1.



Add or Remove Additional Remote

1. Using Current Remote Control

- **a.** On the current remote control, press one “P2” button until motor jog x1 and beep x1.
- **b.** Once more, on the current remote control, press one “P2” button until motor jog x1 and beep x1.
- **c.** On the New remote control, press one “P2” button until motor jog x2 and beep x3.
 - Repeat the same procedure to remove additional remote control.



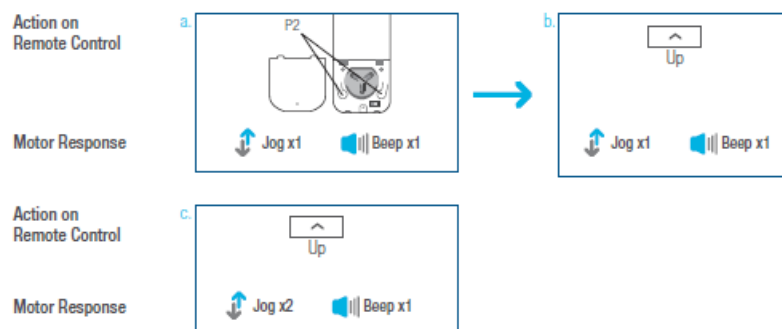
2. New Remote Control

- Follow instructions on page 8 under the section Pair / Unpair Remote Control

Adjust Motor Speed

1. Acceleration Speed

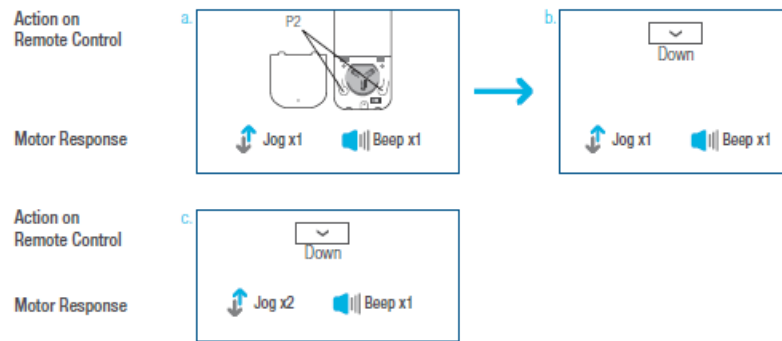
- **a.** Press one “P2” button until motor jog x1 and beep x1.
- **b.** Press “Up” button until motor jog x1 and beep x1.
- **c.** Once more, press “Up” button until motor jog x2 and beep x1.



2. Deceleration Speed

- **a.** Press one “P2” button until motor jog x1 and beep x1.

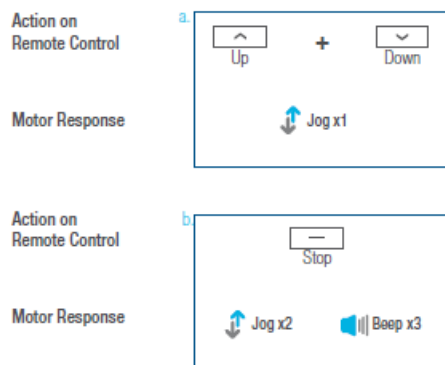
- **b.** Press “Down” button until motor jog x1 and beep x1.
- **c.** Once more, press “Down” button until motor jog x2 and beep x1.
 - If the motor has no response, it already has a Maximum or Minimum speed.



Roller or Sheer Mode

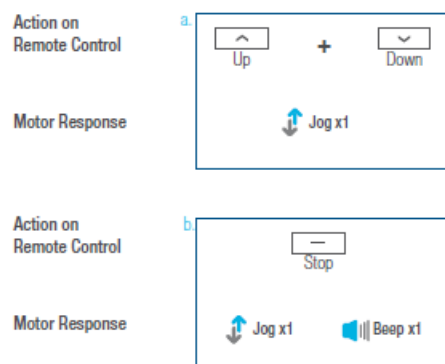
1. Roller Shade Mode – continue movement after a short press – Default Mode

- **a.** Press and hold (about 5 sec) “Up” and “Down” buttons simultaneously until motor jog x1.
- **b.** Press and hold (about 2 sec) “Stop” button until the motor jog x2 and beep x3.



2. Sheer Shade Mode – jog movement after a short press (continue movement after a long press)

- **a.** Press and hold (about 5 sec) “Up” and “Down” buttons simultaneously until motor jog x1.
- **b.** Press and hold (about 2 sec) “Stop” button until motor jog x1 and beep x1.



Quick Index

Settings	Steps
1 Pairing	P1 (hold down for 2s) > Stop (hold down for 2s)
2 Switch Rotating Direction	Up + Down (hold down for 2s)
3 Setting Upper & Lower Limits	Upper Limit: Up (hold down for 2s) > Up + Stop (hold down for 2s) Lower Limit: Down (hold down for 2s) > Down + Stop (hold down for 2s)
4 Add / Remove Favorite Position	P2 > Stop > Stop
5 Roller Mode & Sheer Mode Switch	Up + Down (hold down for 5s) > Stop
6 Adjust Limits	Upper Limit: Up + Stop (hold down for 5s) > Up or Down > Up + Stop (hold down for 2s) Lower Limit: Down + Stop (hold down for 5s) > Up or Down > Down + Stop (hold down for 2s)
7 Pair / Unpair Additional Emitter	P2 (existing) > P2 (existing) > P2 (new)
8 Speed Regulation	Acceleration: P2 > Up > Up Deceleration: P2 > Down > Down

Troubleshooting

Issues	Possible Causes	Solution
The motor has no response	Battery in motor is depleted	Recharge with compatible AC adaptor and check connection and positioning of solar PV panel
	Insufficient charging from Solar PV Panel	Check connection and orientation of solar PV panel
	Remote control battery is discharged	Replace battery
	Battery is inserted incorrectly into remote control	Check battery polarity
	Radio interference/shielding	Ensure remote control and the antenna on the motor are positioned away from metal objects
	Receiver distance is too far from Remote Control	Move remote control to a closer position
	Power failure	Check power supply to motor is connected and active
	Incorrect wiring	Check that wiring is connected correctly (refer to motor installation instructions)
Motor beeps 10 times when in use	Battery voltage is low / PV (solar panel issue)	Recharge with AC adapter or check connection and positioning of solar PV panel
Cannot program a single motor (multiple motors responded)	Multiple motors are paired to the same channel.	Always reserve an individual channel for programming functions
		SYSTEM BEST PRACTICE – Provide an extra 15 channel remote in your multi-motor projects that provides individual control for each motor for programming purposes
		Place all other motors into sleep mode (ref to P1 button instructions)

Upgrade to the industry's most advanced Motor Program:

- Motorization features 2-way technology with superior value and innovation paired with a smart, seamless user interface.

Documents / Resources

	<p>AMP RF2W15 Channel Remote Control [pdf] User Guide</p> <p>RF2W15 Channel Remote Control, Channel Remote Control, Remote Control, Control</p>
---	---

References

- [User Manual](#)

Manuals+, Privacy Policy

This website is an independent publication and is neither affiliated with nor endorsed by any of the trademark owners. The "Bluetooth®" word mark and logos are registered trademarks owned by Bluetooth SIG, Inc. The "Wi-Fi®" word mark and logos are registered trademarks owned by the Wi-Fi Alliance. Any use of these marks on this website does not imply any affiliation with or endorsement.