



3M LBL143-1 Littmann CORE Digital Stethoscope User Guide

[Home](#) » [3M](#) » 3M LBL143-1 Littmann CORE Digital Stethoscope User Guide 



Littmann
CORE Stethoscope
Connects to Eko Software



Contents

- 1 3M™ Littmann® CORE Digital Stethoscope
- 2 In the Box
- 3 Notifications
- 4 Charging
- 5 Service and Support
- 6 Documents / Resources
 - 6.1 References
- 7 Related Posts

3M™ Littmann® CORE Digital Stethoscope

Quick Start Guide

Charge the Littmann CORE stethoscope prior to first use. After it is charged, your stethoscope is ready to use. Download the Eko App (where available) from the Apple App Store® or the Google Play Store® to access additional features of the Littmann CORE stethoscope including wireless listening, advanced sound and filtering control, automated cardiac disease detection (where available, may require additional subscription), as well as saving and sharing recordings.



<https://qrco.de/bcLIsA>

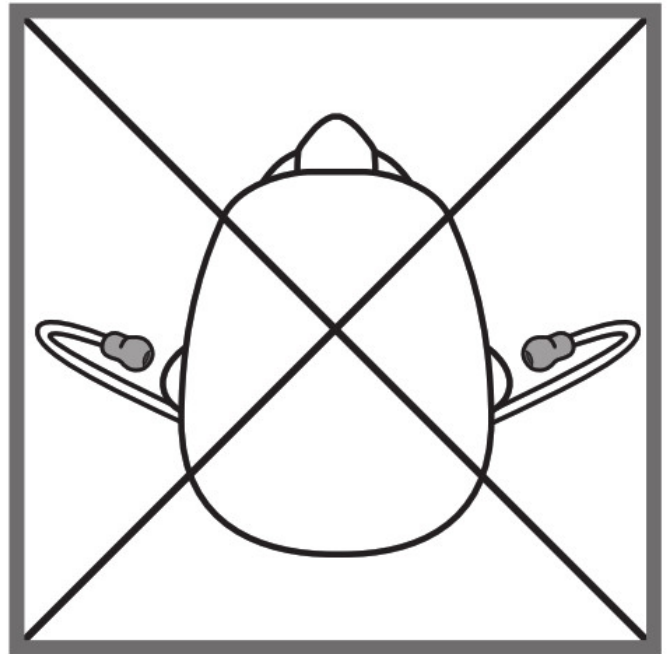
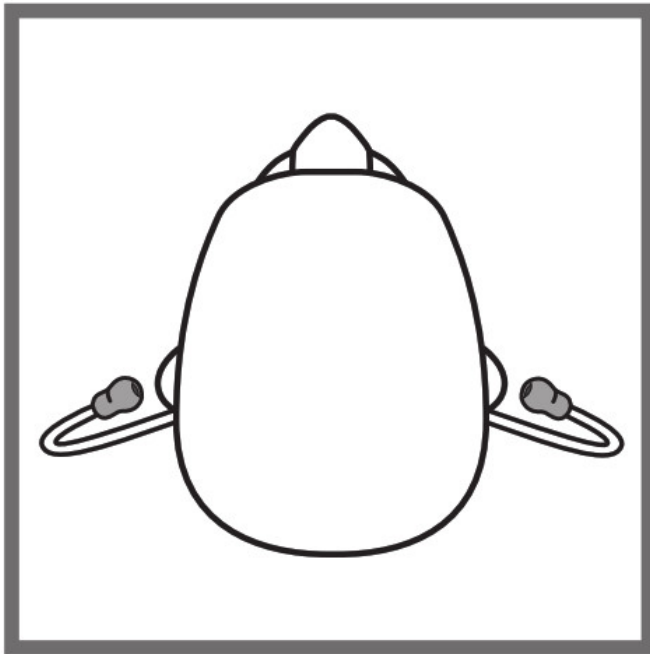
Scan with your phone's camera to download the Eko App.

In the Box

- Eko CORE Digital Attachment and 3M™ Littmann® Cardiology IV™ Stethoscope
- Additional set of 3M Littmann Snap Tight Soft-Sealing Eartips (small)
- Nonchill Bell Sleeve
- USB Charging Cable
- Quick Start Guide

Eartips

Insert eartips in a forward direction.



Volume

Use the (+) and (-) buttons to adjust volume. There are 7 volume steps.

Turn On and Off

When the CORE stethoscope is off, it functions as an unamplified stethoscope.

To turn the CORE stethoscope on, press the power toggle in. The light will begin flashing. You will now hear amplified and filtered sound in the eartips.

Telemedicine and AI Features

Eko offers telemedicine and AI features that require a software subscription (where available, sold separately).

You can setup a subscription online at ekohealth.com Active Noise Cancelling The CORE stethoscope includes active noise cancelling to remove ambient noise from the

surrounding environment. Active noise cancelling can be turned off or on through the Eko App.

Notifications

((())) (blinking)

CORE

stethoscope is on & seeking device

(yellow)

CORE stethoscope is off & charging

((●)) (yellow)

CORE stethoscope is low on battery

CORE stethoscope is on & connected

(green)

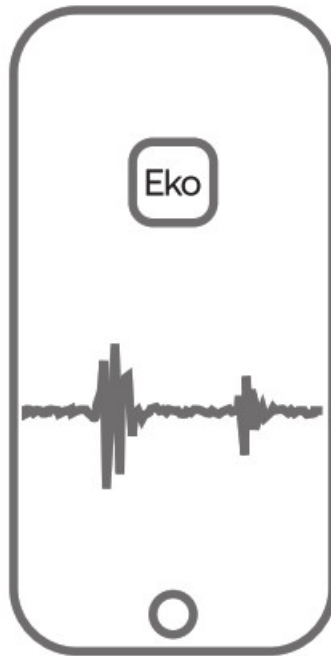
CORE stethoscope is fully charged

((●)) (blue)

CORE stethoscope is recording

Recording

When connected to the Eko App, press the (o) button to begin recording.



Charging

Connect the micro USB cable to the CORE stethoscope and use a UL-certified or CE-marked 5V USB wall charger. The CORE stethoscope will take about 2 hours to fully charge. The light will turn green when it is fully charged.

User Manual

Review the user manual before using your Littmann CORE Stethoscope. To view the manual visit: ekohealth.com/getstarted

For more information on 3M devices, see HCBGregulatory.3M.com







Service and Support

In the USA, please visit littmann.com/service or call 1-800-228-3957. If you are outside of the USA, please visit littmann.com for the contact information of your local 3M office.

Apple App Store is a trademark of Apple Inc.

Google Play and the Google Play logo are trademarks of Google LLC.

Bluetooth ® is a registered trademark of Bluetooth SIG LBL 143 Rev B

 <p>made in USA with Globally Sourced Materials 3M Company 2510 Conway Ave. St. Paul, MN 55144 USA</p>	  <p>3M Deutschland GmbH Health Care Business Carl-Schurz-Str. 1 41453 Neuss, Germany</p>	   <p>ysia Eko Devices, Inc. 1212 Broadway, Suite 100 Oakland, CA 94612 USA</p> <p>Made in Mala</p>
---	---	---

System assembled by 3M Company

3M Deutschland GmbH

Health Care Business

www.littmann.com

©2022 3M; Eko Devices Inc. All rights reserved.

3M, Littmann, the L Littmann logo, the L, and Cardiology IV are marks and/or registered marks of 3M.

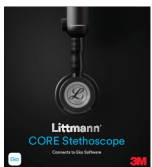
Unauthorized use prohibited.

Eko trademarks, including CORE, are marks and/or registered marks of Eko Devices Inc.

Issue Date: 2022-03

34-8728-3019-4

Documents / Resources

	<p>3M LBL143-1 Littmann CORE Digital Stethoscope [pdf] User Guide LBL143-1 Littmann CORE Digital Stethoscope, LBL143-1, Littmann CORE Digital Stethoscope, CORE Digital Stethoscope, Digital Stethoscope, Stethoscope</p>
---	---

References

-  [Eko Digital Stethoscopes, AI Disease Detection & Telehealth](#)
-  [User Manuals – Help Center](#)
-  [eIFU Health Care](#)
-  [Littmann Stethoscopes | 3M United States](#)
-  [USA Warranty & Repairs for Littmann Stethoscopes | 3M](#)
-  [Eko Digital Stethoscopes, AI Disease Detection & Telehealth](#)
-  [User Manuals – Help Center](#)

- [3M Littmann Stethoscopes | 3M United States](#)
- [3M USA Warranty & Repairs for Littmann Stethoscopes | 3M](#)

Manuals+.