



[Home](#) » [2E](#) » **2E V285B-TMQ0109 PC Computer Case User Guide** 

## Contents [ [hide](#) ]

- 1 2E V285B-TMQ0109 PC Computer Case
- 2 Cleaning and Maintenance:
- 3 COMPUTER CASE SPECIFICATION
- 4 DISCRIPTION
- 5 COMPLETE SET
- 6 SYSTEM COMPONENTS INSTALLATION
- 7 Motherboard installation.
- 8 VGA installation.
- 9 Fans Installation.
- 10 OPERATING CONDITIONS AND PRECAUTIONS
- 11 WARRANTY CARD
- 12 Frequently Asked Questions
- 13 Documents / Resources
  - 13.1 References



## 2E V285B-TMQ0109 PC Computer Case



### **Specifications:**

- Form Factor: Mini Tower
- Supported Motherboard Sizes: Micro ATX, Mini ITX
- Drive Bays: 2 x 5.25", 3 x 3.5", 5 x 2.5"
- Expansion Slots: 2 (3)
- Front Panel Ports: 1 x USB 3.0, 1 x USB 2.0, 1 x USB Type-C, HD AUDIO+MIC, Power, LED+HDD LED
- Cooling System: 1 x 120mm rear fan included, support for additional cooling options
- Dimensions: 310mm x 188mm x 375mm / 425mm x 240mm x 375mm
- Maximum GPU Length: 300mm
- Maximum CPU Cooler Height: 160mm
- Maximum PSU Length: 2.5" or 3.1"

### **Installation of Components:**

1. Prepare your components, including motherboard, GPU, CPU, storage drives, etc.
2. Open the computer case by removing the side panels.
3. Install the power supply unit (PSU) into the designated area.
4. Mount the motherboard onto the standoffs inside the case.
5. Install the GPU, CPU, and other components into their respective slots.
6. Connect the necessary cables for power and data transfer.
7. Close the case by reattaching the side panels securely.

**Cable Management:**

Proper cable management is essential for airflow and aesthetics. Route cables neatly and use cable ties to secure them along the edges of the case to avoid obstructing components.

**Cooling System:**

Ensure proper airflow by positioning your fans strategically. Consider adding additional fans or liquid cooling solutions for better thermal performance.

**Cleaning and Maintenance:**

Regularly clean dust from your components and fans to prevent overheating. Use compressed air to blow out dust buildup from hard-to-reach areas.

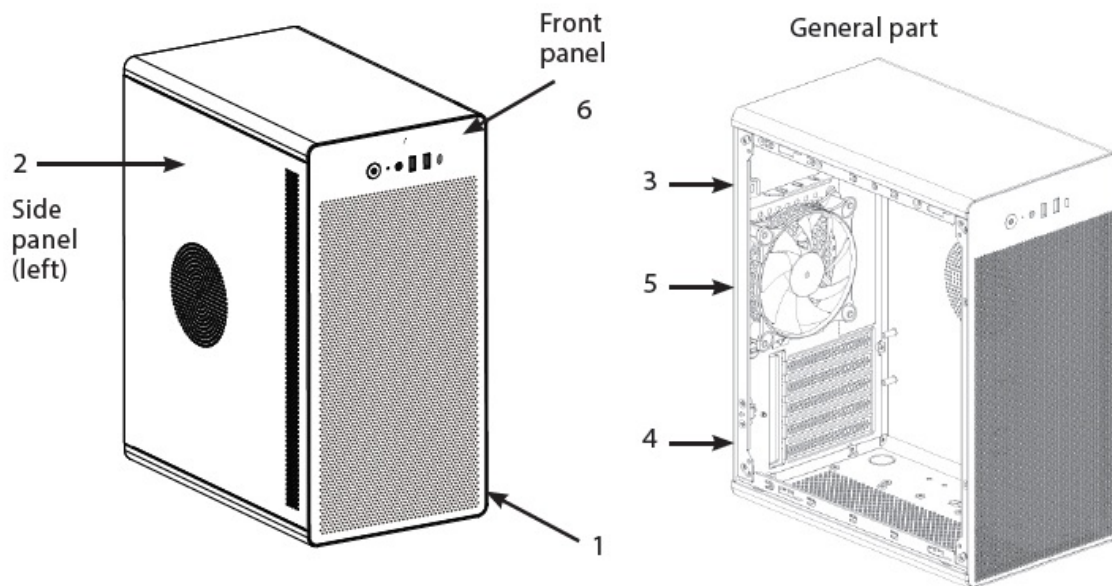
- Product: computer case.
- Using: for placing components of a personal computer system.
- Model: 2E-V285B
- Color: black.

**COMPUTER CASE SPECIFICATION**

Type	Mini Tower
Material	Steel 0,7mm
Motherboards	Micro ATX, Mini ITX
External 5.25"	—
Internal 2.5"	2 (3) pcs
Internal 3.5"	1 (0) pcs
Expansion slots	5 pcs

<b>Optional fans, mm</b>	Front panel: — PSU TOP plate: — Rear panel: 1x 120 Top panel: —
<b>Radiators, mm</b>	Front panel: — Side panel: — Rear panel: — Top panel: —
<b>Included fans, mm</b>	Front panel: — Side panel: — Rear panel: 1x 120 (MOLEX) Top panel: —
<b>Fan control</b>	—
<b>I/O Ports, buttons, indicators</b>	1xUSB3.0, 1x USB 2.0, 1xUSB Type-C,HD AUDIO+MIC, Power, LED, HDD LED
<b>Power supply, W</b>	no / on top
<b>Dust filter</b>	without
<b>Max VGA length, mm</b>	300
<b>CPU cooler height, mm</b>	160
<b>Size (WxHxL), mm</b>	310x 188x 375
<b>Package size (WxHxL), mm</b>	425x 240x 375
<b>Weight without package, kg</b>	2,5
<b>Weight with package, kg</b>	3,1
<b>County of origin</b>	China
<b>Warranty</b>	12 months

## DISCRIPTION



1. Front panel – perforated metal.
2. Side panel (left/right) – Perforated metal.
3. Place for the location of the power supply.
4. Rear panel – expansion slots.
5. 120mm fan built into the rear panel.
6. 1xUSB3.0, 1x USB 2.0, 1xUSB Type-C,HD AUDIO+MIC, Power, LED+ HDD LED

Appearance and equipment of the item can be supplemented or modified for the improvement or the improvement of product quality.

## COMPLETE SET

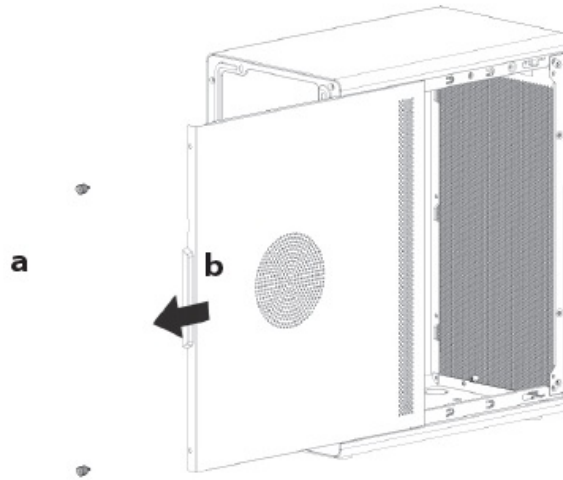
Nº		Name of item	Quantity, pcs
1		MB & SSD 2,5" screws.	14
2		Hex Screws (to fix PSU).	6
3		HDD 3,5" screws.	4
4		PCB nylon colum for M/B	2

Nº		Name of item	Quantity, pcs
5		Fan screws	12
6		Velcro strip	3
7		Rubber pads on feet	4
8		Zip ties	5

## SYSTEM COMPONENTS INSTALLATION

### Remove case panels.

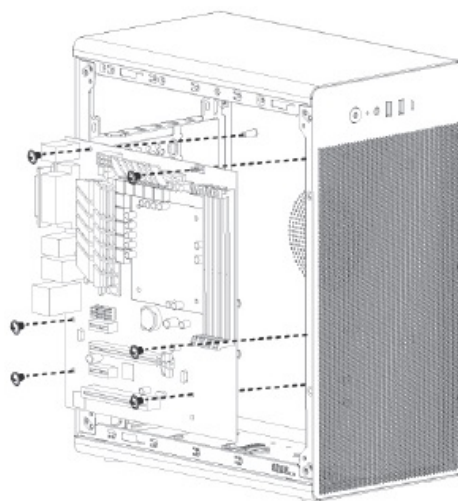
Side (left) panel (perforated metal). Fastened with screws (2 pcs.) – (a). To disassemble the panel, it is necessary to unscrew the screws and carefully remove the panel (b).

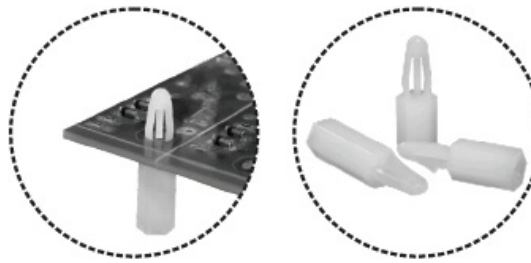


### Motherboard installation.

1. Determine the location of the motherboard.
2. Position so that the external connectors are accessible from the rear panel.
3. Motherboard installation.
4. Secure with motherboard fasteners.

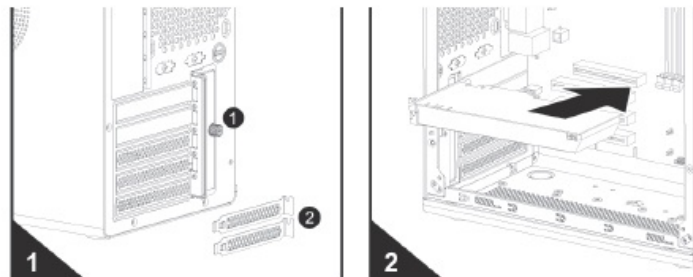
If the motherboard bracket is not in the motherboard mounting holes, check the contents of the case kit.





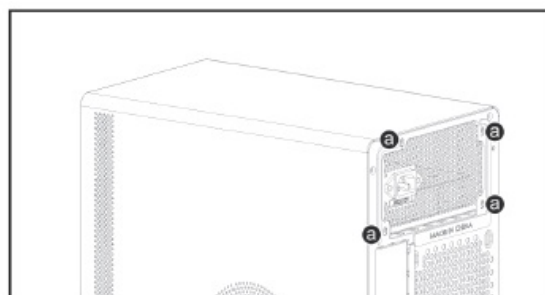
## VGA installation.

1. Expansion slots are on the rear plate of the chassis. Remove the related PCI bay.
2. Insert & fix the VGA in the proper position.



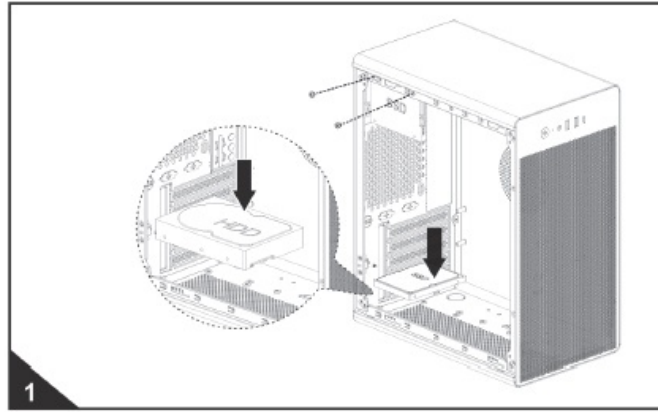
## Power supply installation.

1. PSU Space at the top of the chassis
2. Insert PSU
3. Fix with hex screw from rear plate (a).



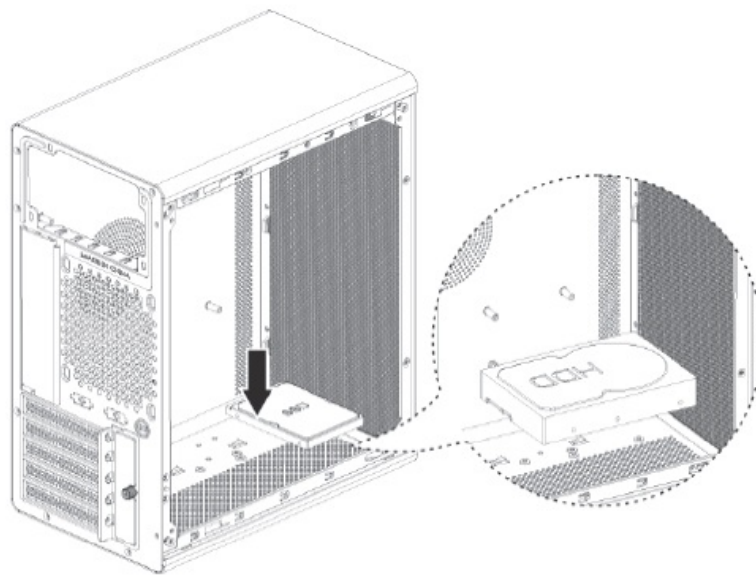
## SSD installation (2,5" bay). HDD installation (3,5" bay).

1. 1x2.5"SSD can be installed on the side position of top panel as shown in the illustration.(Note: SSD installed here can only fixed by 2 screws.)
2. 1x2.5"SSD or 1x3.5" HDD can be installed on bottom panel at rear end position as shown in the illustration, fix SSD or HDD by screws from the bottom.  
(Caution: bottom panel can not be installed with the 2\*HDD in the meantime).



3. 1x2.5" SSD or 1x3.5 "HDD can be installed on bottom panel at front end position as shown in the illustration, fix SSD or HDD by screws from the bottom.

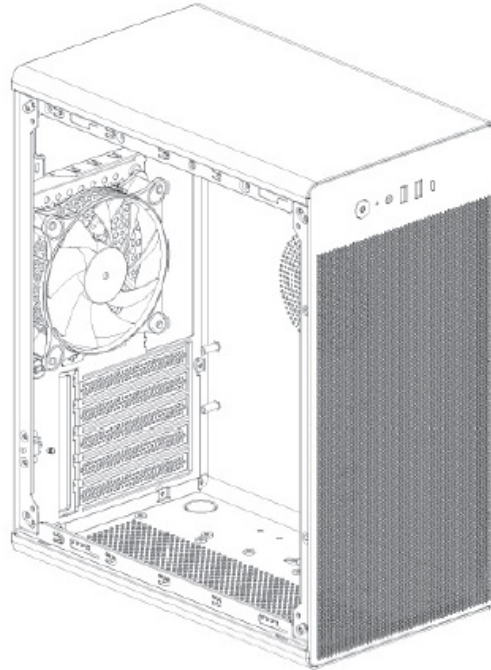
(Caution: bottom panel can not be installed with 2xHDD in the meantime).



## Fans Installation.

1. It is possible to install 1 x 120 mm fan in the case and fix it on the back panel. 2 1x120mm fan with MOLEX connection included.





## **OPERATING CONDITIONS AND PRECAUTIONS**

1. Ensure that you have all the necessary parts before starting to use case.
2. It's important to use gloves during assembly and prevent injuries to your hands.
3. Don't use additional efforts when you fix components to prevent damage to the case or case mounting.
4. Make sure that all components of the product are intact and functioning properly.
5. Do not use abrasive, whitening cleaners to clean the product to avoid scratches and surface damage.
6. Store and operate out of the reach of children and pets.

### **WARNING: RISK OF ELECTRIC SHOCK!**

7. The installation and replacement of the power supply must be carried out according to the manufacturer's instructions and safety warnings. Failure to follow the instructions may result in damage to the power supply or computer system and may result in serious injury or death.
8. A high voltage electric current is applied to the power supply. It is forbidden to open the power supply housing or carry out repairs of the power supply yourself. It does not contain user-service able components.
9. This product is intended for indoor use only.
10. Do not use the power supply close to water, as well as in high temperatures and high humidity.

11. Do not install near any heat sources such as radiators, heat registers, stoves, or other apparatus that produce heat.
12. Do not insert objects into open ventilation openings or the ventilation grill of the power supply.
13. Do not modify the cables and/or connectors supplied with the power supply yourself.
14. If modular cables are used in this power supply, use only cables supplied by the manufacturer. Other cables may be incompatible and cause serious damage to the system and power supply.
15. If any malfunction of the device is detected, it is recommended that you immediately contact an authorized service center.
16. Failure to comply with the manufacturer's instructions and/or these safety instructions will void all warranties.

## **STORAGE, TRANSPORTATION AND UTILISATION**

1. Transportation of the product in its original packaging to avoid damage.
2. Store in individual packaging in closed, dry, heated rooms at temperatures from +5 ° C to +40 ° C, relative humidity not more than 60%. The air in the room should not contain acid and other vapors that adversely affect the materials of the products.
3. The product should be transported in individual packaging in closed, dry rooms at temperatures from -40 ° C to +60 ° C, relative humidity not more than 60%. The air in the transportation room must not contain acid and other vapors that adversely affect the materials of the products.
4. If components have already been installed in cases, please check how securely they are fixed, or remove them before the preparation of the case for transportation.
5. Avoid contact with moisture or water on the surface or inside of the case to prevent corrosion of the material.
6. Utilization of the case and its packing by the utilization regulations in your country.
7. After the end of the product's service life, do not dispose of with ordinary household waste, but in special collection points for electrical or electronic equipment.

## **WARRANTY CARD**

Dear Buyer! Congratulations on your purchase of the 2E brand computer case, which was designed and manufactured to the highest quality standards, and we thank you for

choosing this particular product. a

We ask you to keep the coupon during the warranty period. When purchasing a product, require a full warranty card.

1. Warranty service is carried out only if there is a correctly filled original warranty card, which indicates: product model, date of sale, serial number of power supply, warranty service period, and the seller's seal.
2. The product is intended for consumer use. When using the product in commercial activities, the seller/manufacturer does not bear warranty obligations; after-sales service is performed on a paid basis.
3. Warranty repair is carried out within the period specified in the warranty card for the product in an authorized service center on the conditions and terms determined by applicable law.
4. The product is withdrawn from the warranty in case of violation by the consumer of the operating rules set forth in the instruction manual.
5. The product is removed from warranty service in the following cases:
  - misuse and non-consumer use;
  - mechanical damage;
  - damage caused by the ingress of foreign objects, substances, liquids, or insects;
  - damage caused by natural disasters (rain, wind, lightning, etc.), fire, domestic factors (excessive humidity, dust, aggressive environment, etc.)
  - damage caused by non-compliance with power and cable network parameters with state standards and other similar factors;
  - When operating equipment in the power supply network with a missing single ground loop;
  - In case of violation of seals installed on the product;
  - lack of a serial number of the device, or inability to identify it.
6. The warranty period is 12 months from the date of sale.

Tear-off maintenance tickets are provided by an authorized service center.

The completeness of the product is checked. I have read the terms of the warranty service, no complaints.

### **Warranty card**

- Product
- Model
- Serial number
- Seller Information
- Trade organization name
- The address
- Date of sale
- Seller stamp

### **Coupon2**

- Seller stamp
  - Date of application
  - Cause of damage
  - Date of completion

### **Coupon3**

- Seller stamp
  - Date of application
  - Cause of damage
  - Date of completion

### **Coupon1**

- Seller stamp
  - Date of application
  - Cause of damage
  - Date of completion



2e.ua

## Frequently Asked Questions

**Q: How many drive bays does the computer case have?**

A: The computer case has a total of 10 drive bays – 2 x 5.25", 3 x 3.5", and 5 x 2.5".


**Q: What is the maximum GPU length supported by the case?**

A: The case supports a maximum GPU length of 300mm.

**Q: Can I install a liquid cooling system in this case?**

A: Yes, you can install a liquid cooling system in this case for enhanced cooling performance.

## Documents / Resources

	<p><a href="#">2E V285B-TMQ0109 PC Computer Case [pdf]</a> User Guide</p> <p>V285B, TMQ0109, V285B-TMQ0109 PC Computer Case, V285B-TMQ0109, PC Computer Case, Computer Case, Case</p>
---	---

## References

- [User Manual](#)

2E

2E, Case, Computer Case, PC Computer Case, TMQ0109, V285B, V285B-TMQ0109, V285B-TMQ0109 PC Computer Case

---

## Leave a comment

Your email address will not be published. Required fields are marked \*

Comment \*

Name

Email

Website

☐ Save my name, email, and website in this browser for the next time I comment.

**Post Comment**

**Search:**

e.g. whirlpool wrf535swhz

**Search**

[Manuals+](#) | [Upload](#) | [Deep Search](#) | [Privacy Policy](#) | [@manuals.plus](#) | [YouTube](#)

This website is an independent publication and is neither affiliated with nor endorsed by any of the trademark owners. The "Bluetooth®" word mark and logos are registered trademarks owned by Bluetooth SIG, Inc. The "Wi-Fi®" word mark and logos are registered trademarks owned by the Wi-Fi Alliance. Any use of these marks on this website does not imply any affiliation with or endorsement.