



8BitDo SN30 Mod Kit for SNES/SFC Classic Controller Instructions

[Home](#) » [8Bitdo](#) » 8BitDo SN30 Mod Kit for SNES/SFC Classic Controller Instructions 

Contents

- [1 8BitDo SN30 Mod Kit for SNES/SFC Classic Controller](#)
- [2 InstructionS-SN30 Modkit](#)
- [3 Bluetooth connection](#)
- [4 Windows](#)
- [5 MACOS](#)
- [6 Documents / Resources](#)
- [7 Related Posts](#)

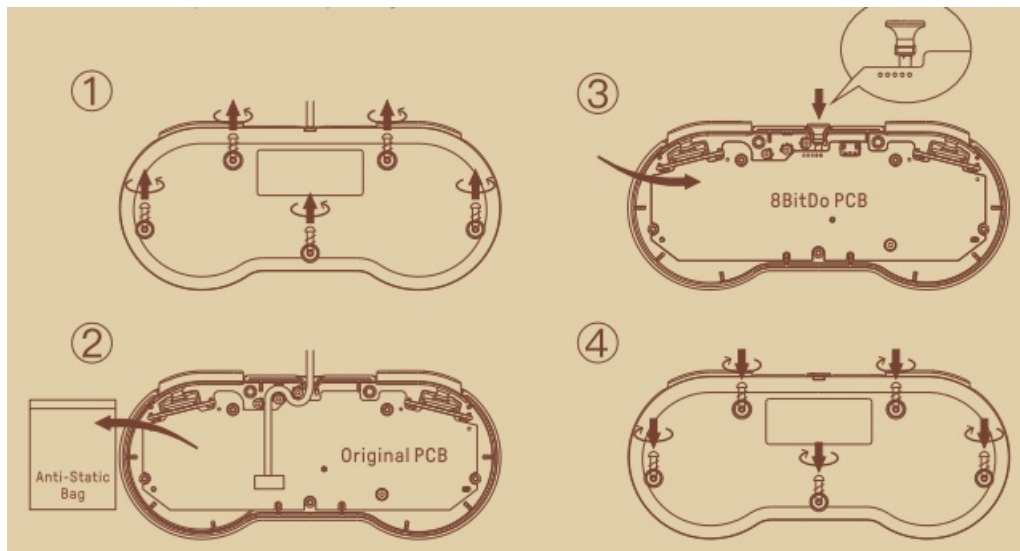


8BitDo SN30 Mod Kit for SNES/SFC Classic Controller



InstructionS-SN30 Modkit

- Please handle it with care.
We are not responsible for any damage caused in use.



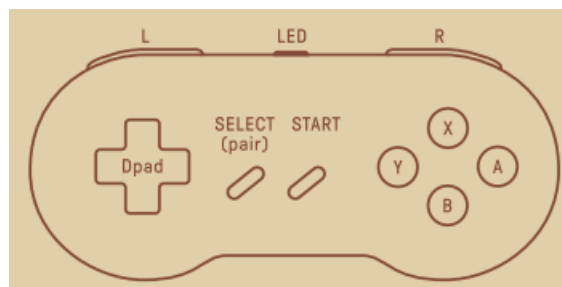
- Press START to turn on the controller

Press and hold START for 3 seconds to turn off the controller Press and hold START for 8 seconds to force turn off the controller

Bluetooth connection

Switch

1. Press START + Y to turn on the controller, LED will blink 4 times per cycle.
 2. Press and hold SELECT for 3 seconds to enter pairing mode. LED will rapidly blink.
 3. Go to your Switch Home Page to click on Controllers, then click on Change Grip/Order and wait for the controller to sync up. LED will become solid when connection is successful.
 4. Controller will auto-reconnect to your Switch with the press of START once it has been paired.
- When connected to your Switch, the OOWN+SELECT = Switch HOME button.



Android

1. Press START + B to turn on the controller, LED will blink once per cycle.
2. Press and hold SELECT for 3 seconds to enter pairing mode. LED will rapidly blink.
3. Go to your Android device's Bluetooth setting, pair with [8Bitdo SN30 Mod kit]. LED will become solid when connection is successful.
4. Controller will auto-reconnect to your Android device with the press of START once it has been paired.

Windows

1. Press START + X to turn on the controller, LED will blink twice per cycle.
2. Press and hold SELECT for 3 seconds to enter pairing mode. LED will rapidly blink.

3. Go to your Windows device's Bluetooth setting, and pair with [8Bitdo SN30 Modkit]. LEO will become solid when connection is successful.
4. Controller will auto-reconnect to your Windows device with the press of START once it has been paired

MACOS

1. Press and hold START +A to turn on the controller, LEO will blink 3 times per cycle.
2. Press and hold SELECT for 3 seconds to enter pairing mode. LEO will rapidly blink.
3. Go to your macOS device's Bluetooth setting, pair with [Wireless Controller]. LEO will become solid when connection is successful.
4. Controller will auto-reconnect to your macOS device with the press of START once it has been paired.

Bitte Retro Receivers and USB Adapter

1. Press START +B to turn on the controller, LED will blink once per cycle.
2. Press both PAIR button on the receiver/Adapter and SELECT on the controller to sync them.
3. Both LEDs on the receiver/Adpter and controller will become solid when connection is successful.

Button Mapping

Press and hold HOTKEY for 3 seconds to map OPAO and other buttons, LEO will blink once in red when successful:

SELECT+UP: DPAD UP

SELECT+LEFT: DPAD LEFT JOYSTICK SELECT+ RIGHT: OPAO • RIGHT JOYSTICK SELECT+DOWN: Swap A-Band X-Y

Battery

Status-LED Indicator

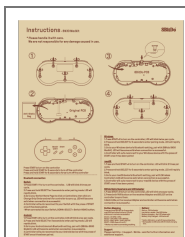
Low battery mode-Red LED blinks Battery charging – Red LED stays solid Battery fully charged – LED turns off

- Built-in 230mAh Li-ion with 10 hours of playtime.
- Rechargeable via USB cable with 30 minute charging time.

Support

Please visit <http://support.8bitdo.com/forfurtherinformationandadditionalsupport>.

Documents / Resources



[8BitDo SN30 Mod Kit for SNES/SFC Classic Controller](#) [pdf] Instructions
 SN30, Mod Kit for SNES SFC Classic Controller, SN30 Mod Kit for SNES SFC Classic Controller