



## 8BitDo Retro Receiver for SNES Instruction Manual

[Home](#) » [8Bitdo](#) » 8BitDo Retro Receiver for SNES Instruction Manual 

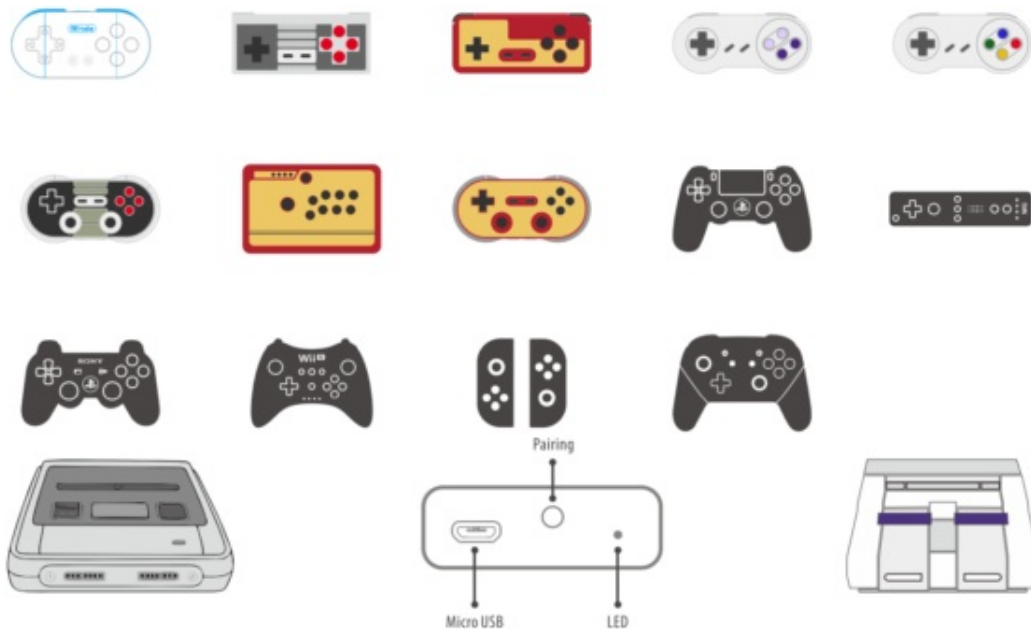
# 8BitDo<sup>®</sup>

Retro receiver for SNES  
Instruction Manual

### Contents

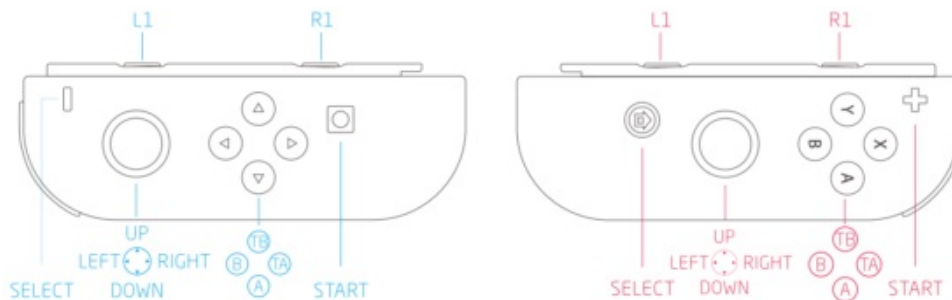
- 1 Supported controllers
- 2 For Nintendo Switch Joy-Con
- 3 For the Nintendo Switch Pro controller
- 4 For 8Bitdo controllers
- 5 For Wii Remote/Wii MotionPlus controller
- 6 For Wii U Pro controller
- 7 For PS3 controller
- 8 For PS4 controller
- 9 For 8Bitdo controllers
- 10 For Wii Remote/Wii MotionPlus controller
- 11 For Wi U Pro controller
- 12 For PS3 controller
- 13 For PS4 controller
- 14 For 8Bitdo controllers
- 15 For Wii Remote/Wii MotionPlus controller
- 16 For Wii U Pro controller
- 17 Documents / Resources
- 18 Related Posts

### Supported controllers



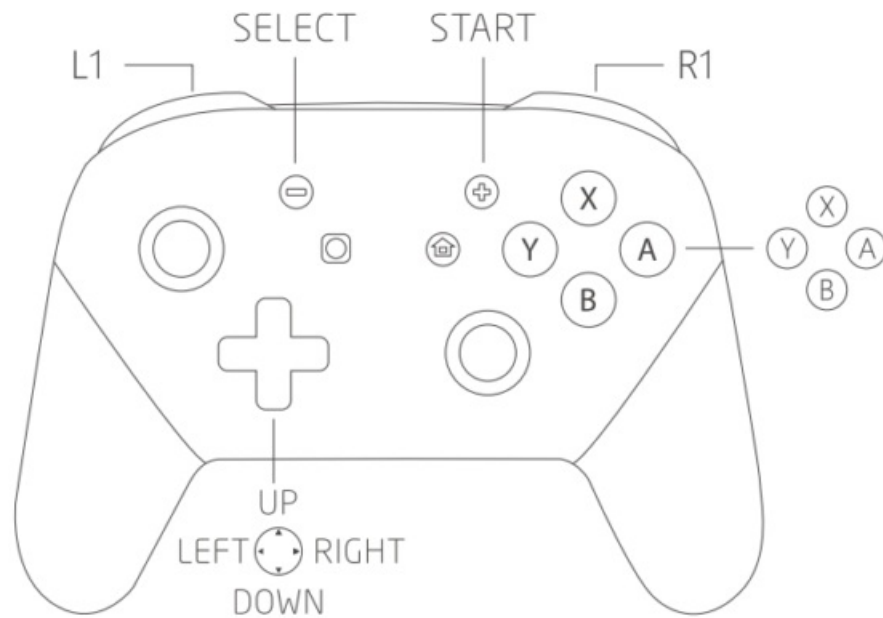
## For Nintendo Switch Joy-Con

1. Insert Retro Receiver into the console and then press the pairing button (the LED will rapidly blink).
2. Press your Joy-Con's sync button.
3. Wait until your Retro Receiver's LED is solid blue and the controller's #1 LED stay on.
4. For the next connection only need to press the A button.



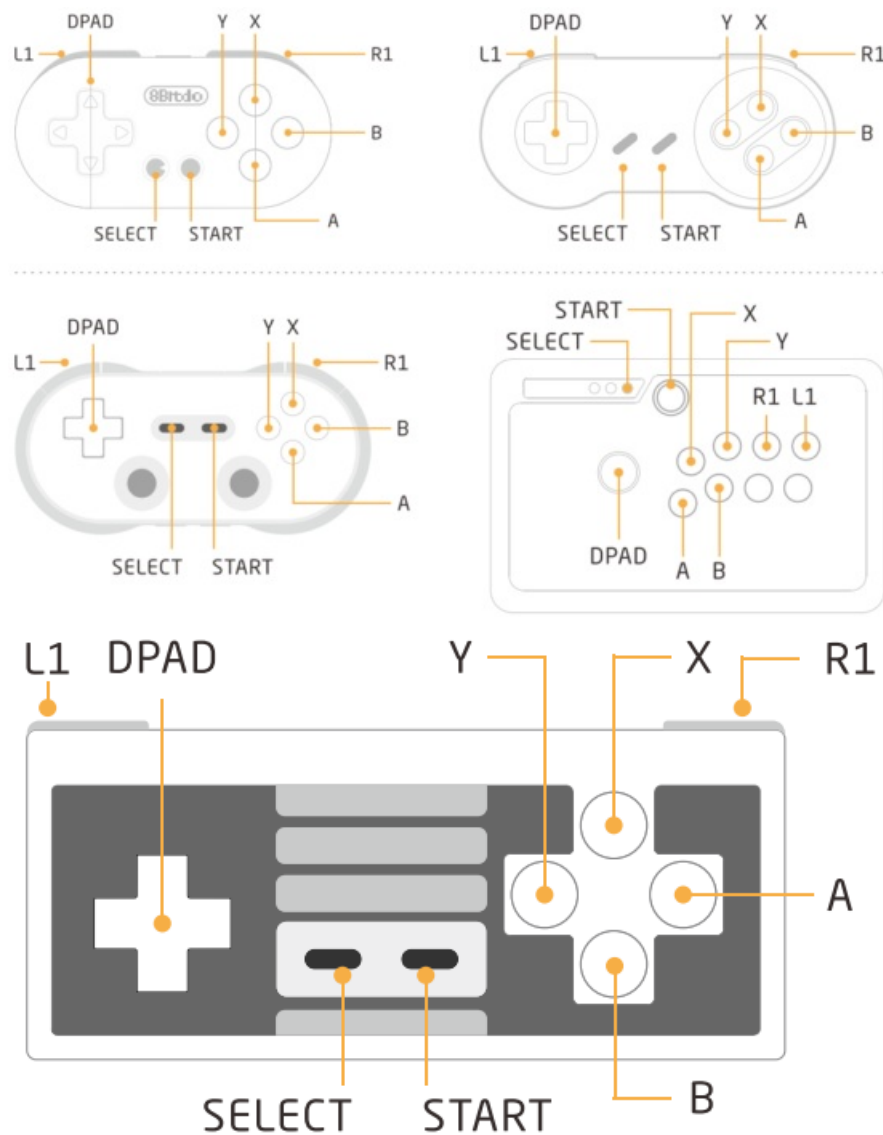
## For the Nintendo Switch Pro controller

1. Insert Retro Receiver into the console and then press the pairing button (the LED will rapidly blink).
2. Press your Switch Pro controller's sync button.
3. Wait until your Retro Receiver's LED is solid blue and the controller's #1 LED stay on.
4. For the next connection only need to press the A button.



### For 8Bitdo controllers

1. Power on 8Bitdo controller (Dinput) to enter pairing mode.
2. Insert Retro Receiver into the console and then press the pairing button (the LED will rapidly blink).
3. Wait until your Retro Receiver and your 8Bitdo controller's LEDs are both solid blue.
4. Your controller is now paired.



## For Wii Remote/Wii MotionPlus controller

1. Insert Retro Receiver into the console and then press the pairing button (the LED will rapidly blink).
2. Press the Wii Remote/Wii MotionPlus controller's sync button.
3. Wait until your Retro Receiver's LED is solid blue and the controller's #1 LED stay on.
4. To re-sync after powering your console down.

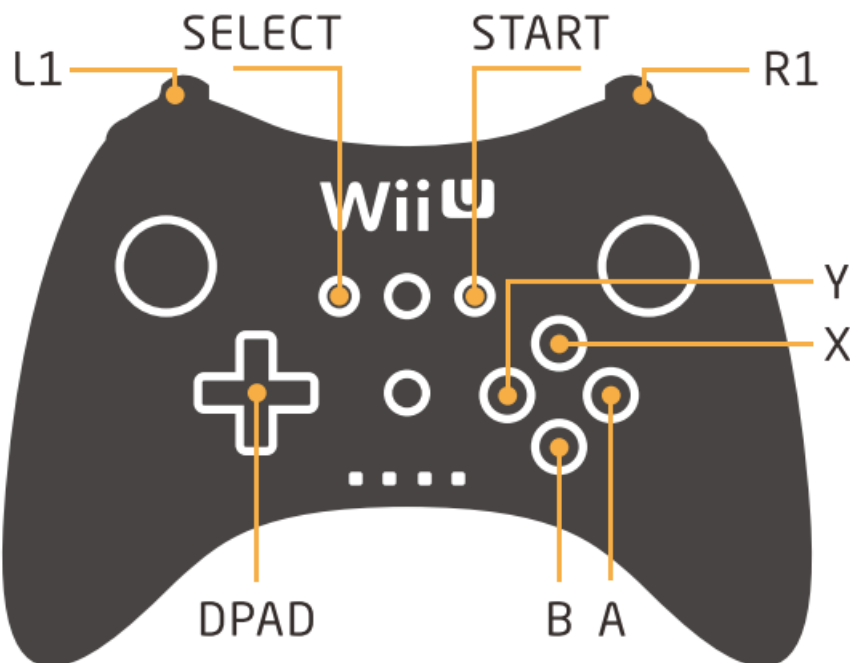
**For Wii Remote: press 1 and 2 buttons.**

**For Wii MotionPlus: press the A button.**



## For Wii U Pro controller

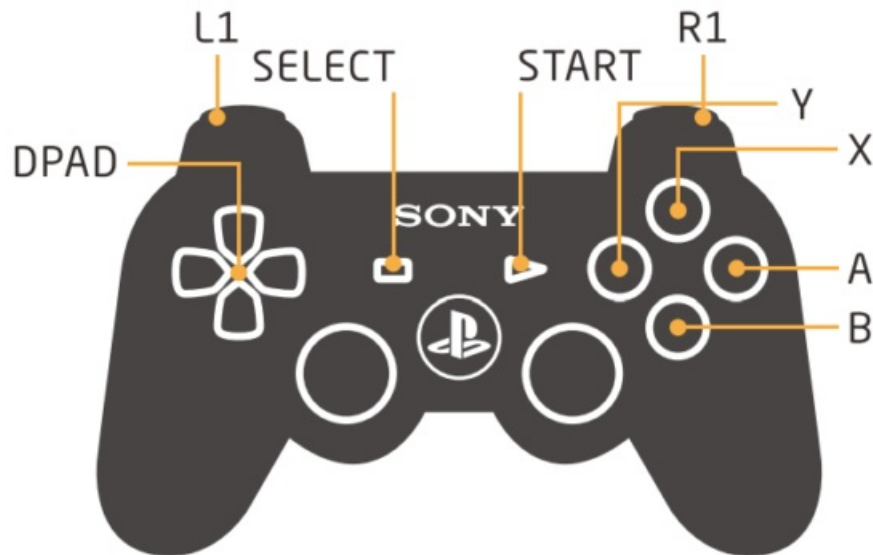
1. Insert Retro Receiver into the console and then press the pairing button (the LED will rapidly blink).
2. Press your Wii U Pro controller's sync button.
3. Wait until your Retro Receiver's LED is solid blue and the controller's #1 LED stay on.
4. For the next connection only need to press the A button.



## For PS3 controller

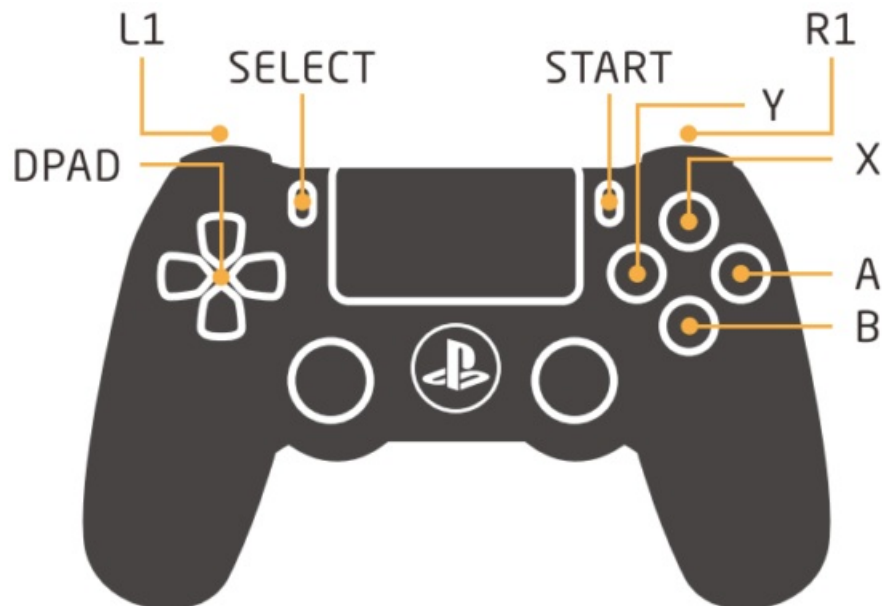
1. Download and Run 8Bitdo Retro Receiver Tools on your PC available for Mac and PC.
2. On your Retro Receiver, hold down the pairing button and connect it to your MAC/PC via USB.
3. Connect your PS3 controller to MAC/PC via USB.
4. Once your Retro Receiver and PS3 controller are both connected via USB, click the "Pair" button in the software.
5. Once pairing is complete, you can insert your Retro Receiver into your console.
6. Now press the PS button on your PS3 controller.

7. Wait until your Retro Receiver's LED is solid blue and the controller's #1 LED stay on.
8. To re-sync after powering your console down, begin from step 6.



### For PS4 controller

1. Insert Retro Receiver into the console and then press the pairing button (the LED will rapidly blink)
2. Press and hold the PS and Share buttons until the lightbar begins to strobe quickly in double.
3. Wait until your Retro Receiver's LED is solid blue and the controller's lightbar stay co.
4. For the next connection only need to press the PS button and wait until the receiver LED is solid blue.

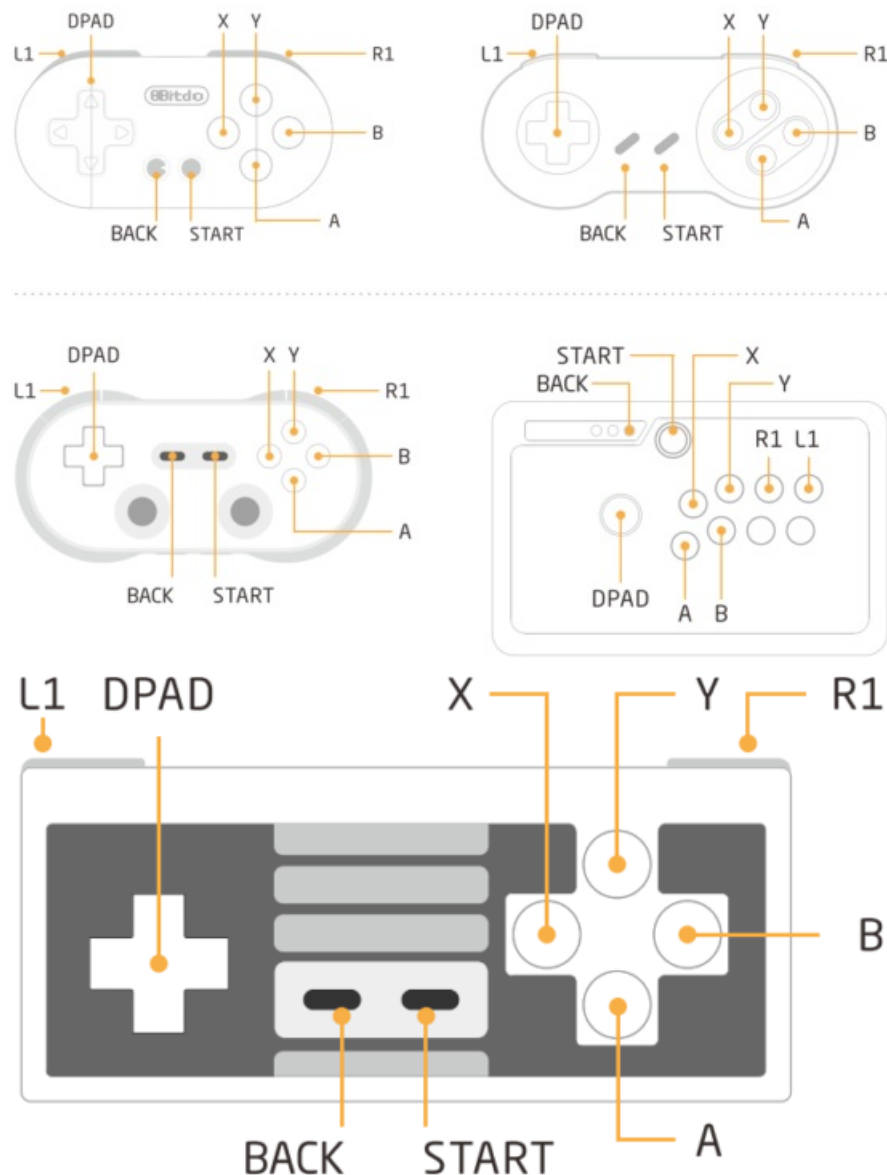


### Instruction Manual for X-input



### For 8Bitdo controllers

1. Power on 88ltdo controller (Dinput) to enter pairing mode.
2. Insert Retro Receiver into the console and then press the pairing button (the LED will rapidly blink).
3. Wait until your Retro Receiver and your 88ltdo controller's LEDs are both solid blue.
4. Your controller is now paired.



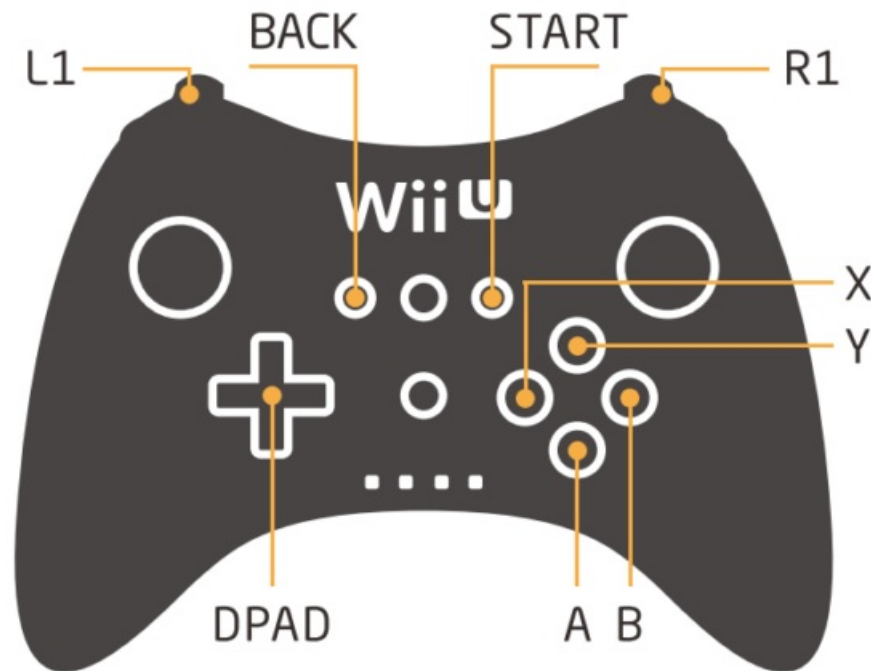
### For Wii Remote/Wii MotionPlus controller

1. Insert Retro Receiver into the console and then press the pairing button (the LED will rapidly blink)
2. Press the Wii Remote/Wii MotionPlus controller's sync button.
3. Wait until your Retro Receiver's LED is solid blue and the controller's #1 LED stay on.
4. To re-sync after powering your console down. For Wii Remote: press 1 and 2 buttons. For Wii MotionPlus: press the A button.



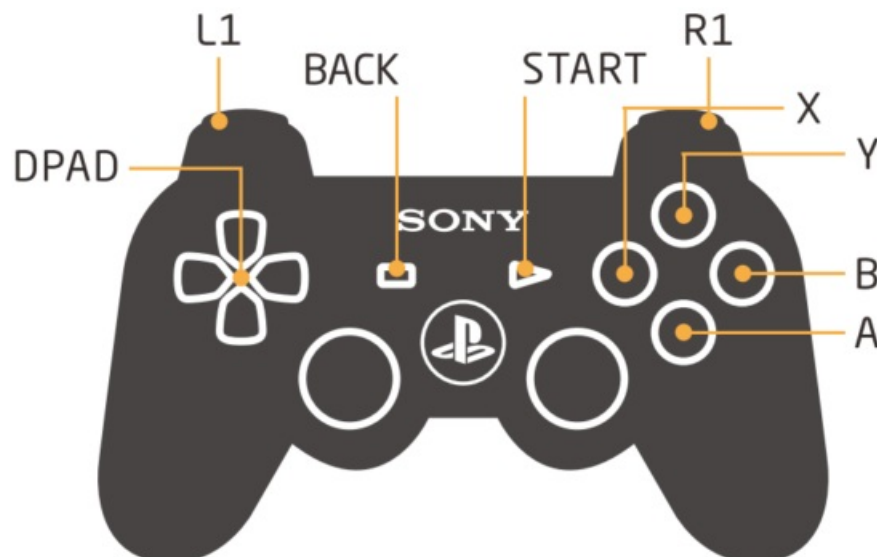
### For Wi U Pro controller

1. Insert Retro Receiver into the console and then press the pairing button (the LED will rapidly blink).
2. Press your Wii U Pro controller's sync button.
3. Wait until your Retro Receiver's LED is solid blue and the controller's #1 LED stay on.
4. For the next connection only need to press the A button.



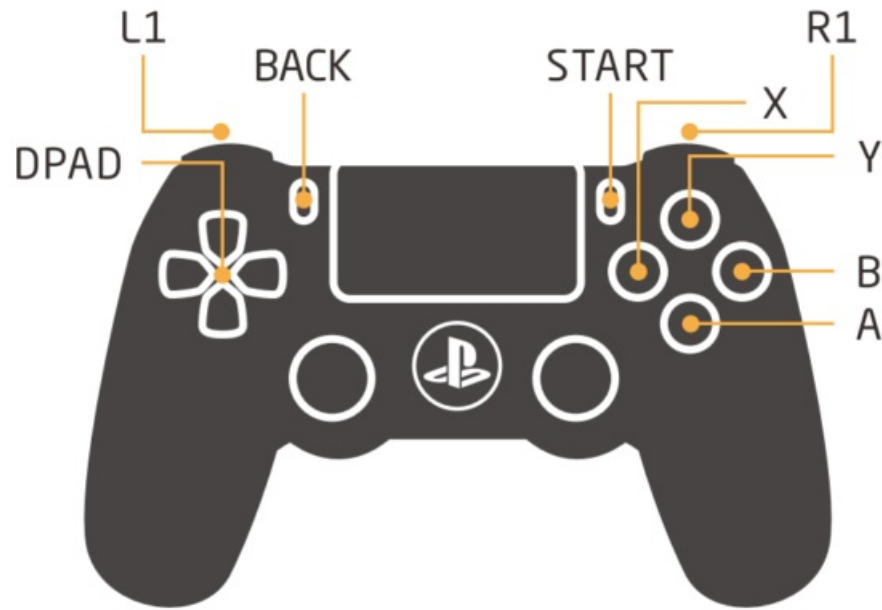
### For PS3 controller

1. Download and Run 8Bitdo Retro Receiver Tools on your PC available for Mac and PC.
2. On your Retro Receiver, hold down the pairing button and connect it to your MAC/PC via USB.
3. Connect your PS3 controller to MAC/PC via USB.
4. Once your Retro Receiver and PS3 controller are both connected via USB, click the "Pair" button in the software.
5. Once pairing is complete, you can insert your Retro Receiver into your console.
6. Now press the PS button on your PS3 controller.
7. Wait until your Retro Receiver's LED is solid blue and the controller's #1 LED stay on.
8. To re-sync after powering your console down, begin from step 6.

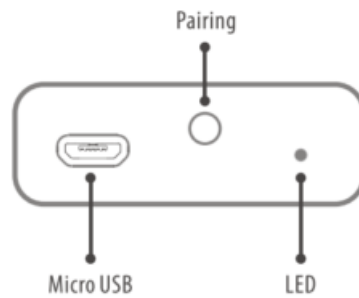


### For PS4 controller

1. Insert Retro Receiver into the console and then press the pairing button (the LED will rapidly blink)
2. Press and hold the PS and Share buttons until the lightbar begins to strobe quickly in double.
3. Wait until your Retro Receiver's LED is solid blue and the controller's lightbar stay on.
4. For the next connection only need to press the PS button and wait until the receiver's LED is solid blue.



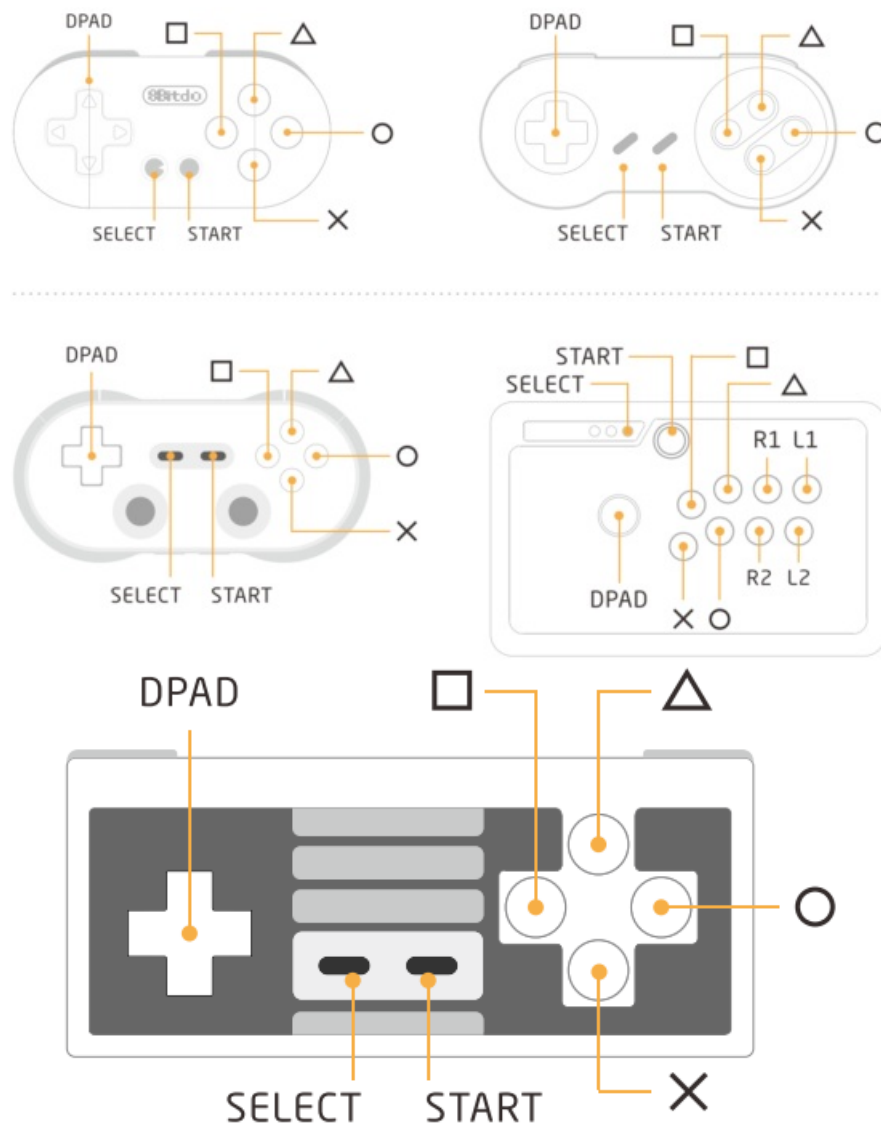
#### Instruction Manual for PS3



#### For 8Bitdo controllers

1. Power on 8Bitdo controller (Dinput) to enter pairing mode.
2. Insert Retro Receiver into the console and then press the pairing button (the LED will rapidly blink).
3. Wait until your Retro Receiver and your 8Bitdo controller's LEDs are both solid blue.
4. Your controller is now paired.





### For Wii Remote/Wii MotionPlus controller

1. Insert Retro Receiver into the console and then press the pairing button (the LED will rapidly blink).
2. Press the Wii Remote/Wii MotionPlus controller's sync button.
3. Wait until your Retro Receiver's LED is solid blue and the controller's #1 LED stay on.
4. To re-sync after powering your console down.

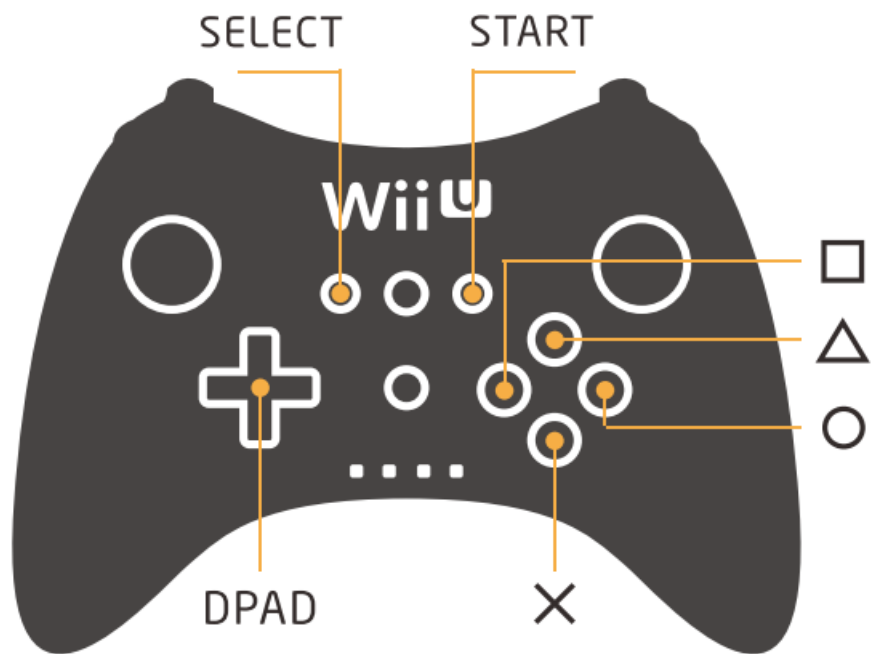
**For Wii Remote: press 1 and 2 buttons.**

**For Wii MotionPlus: press the A button.**

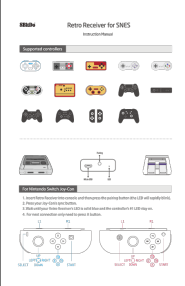


### For Wii U Pro controller

1. Insert Retro Receiver into the console and then press the pairing button (the LED will rapidly blink).
2. Press your Wii U Pro controller's sync button.
3. Wait until your Retro Receiver's LED is solid blue and the controller's #1 LED stay on.
4. For the next connection only need to press the A button.



## Documents / Resources

	<p><a href="#">8BitDo Retro Receiver for SNES</a> [pdf] Instruction Manual Retro Receiver for SNES, Retro Receiver</p>
--	--