



# 8BitDo P30 Classic Modkit for Playstation Classic Controller Instructions

[Home](#) » [8Bitdo](#) » 8BitDo P30 Classic Modkit for Playstation Classic Controller Instructions 

## Contents

- [1 8BitDo P30 Classic Modkit for Playstation Classic](#)
- [2 instructions- P30classicModkit](#)
- [3 Switch](#)
- [4 Android CD – input\)](#)
- [5 Windows \(X – input\)](#)
- [6 macOS](#)
- [7 battery](#)
- [8 support](#)
- [9 Documents / Resources](#)
- [10 Related Posts](#)

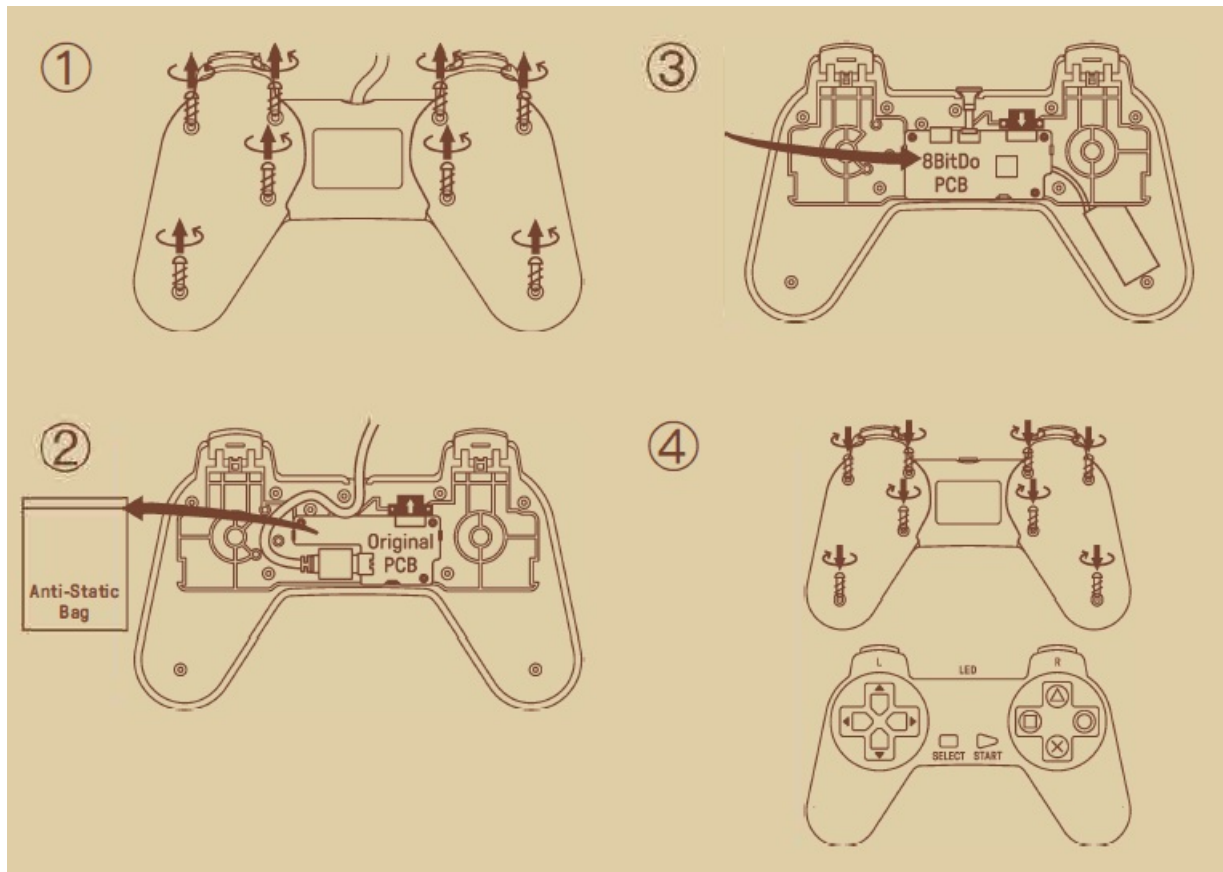


## 8BitDo P30 Classic Modkit for Playstation Classic



### instructions- P30classicModkit

- Please handle it with care.  
We are not responsible for any damage caused in use.



Switch

1. press  $\square$  + start to turn on the controller
2. press and hold select for 3 seconds to enter pairing mode. Blue LED will rapidly blink 3 – go to your Switch Home Page to click on Controllers, then click on Change Grip/Order. LED becomes solid when connection is successful
3. controller will auto-reconnect to your Switch with the press of start once it has been paired
  - when connected to your Switch, select+ down= Switch HOME button

## **Android CD – input)**

1. Press X + start to turn on the controller
2. press and hold select for 3 seconds to enter pairing mode. Blue LED will rapidly blink
3. go to your Android device's Bluetooth setting, pair with [8Bitdo P30 classic Modkit].  
LED becomes solid when connection is successful
4. controller will auto-reconnect to your Android device with the press of start once it has been paired

## **Windows (X – input)**

1. Press, . + Start to turn on the controller
2. press and hold select for 3 seconds to enter pairing mode. Blue LED will rapidly blink
3. go to your Windows device's Bluetooth setting, pair with [BBitDo P30 classic Modkit].  
LED becomes solid when connection is successful
4. controller will auto-reconnect to your Windows device with the press of start once it has been paired

## **macOS**

1. press O + start to turn on the controller
2. press and hold select for 3 seconds to enter pairing mode. Blue LED will rapidly blink
3. go to your macOS device's Bluetooth setting, pair with [Wireless Controller]. LED  
becomes solid when connection is successful
4. controller will auto-reconnect to your macOS device with the press of start once it has been paired

## **battery**

status -LED indicator –

low battery mode LED blinks in red

battery charging LED stays solid red

- rechargeable via USB cable with 90 minute charging time

## **support**

- please visit [support.bbitdo.com](https://support.bbitdo.com) for further information & additional support

## **Documents / Resources**



**[8BitDo P30 Classic Modkit for Playstation Classic Controller](#)** [pdf] Instructions  
P30, Classic Modkit for Playstation Classic Controller, P30 Classic Modkit for Playstation Classic Controller