



8BitDo Charging Dock for Xbox Wireless Controllers User Guide

[Home](#) » [8Bitdo](#) » 8BitDo Charging Dock for Xbox Wireless Controllers User Guide 

Contents

- [1 8BitDo Charging Dock for Xbox Wireless Controllers](#)
- [2 Top](#)
- [3 Bottom](#)
- [4 Battery Installation](#)
- [5 Power Supply](#)
- [6 Battery Charging](#)
- [7 Power Indicator](#)
- [8 Safety Guidelines](#)
- [9 Documents / Resources](#)
 - [9.1 References](#)
- [10 Related Posts](#)

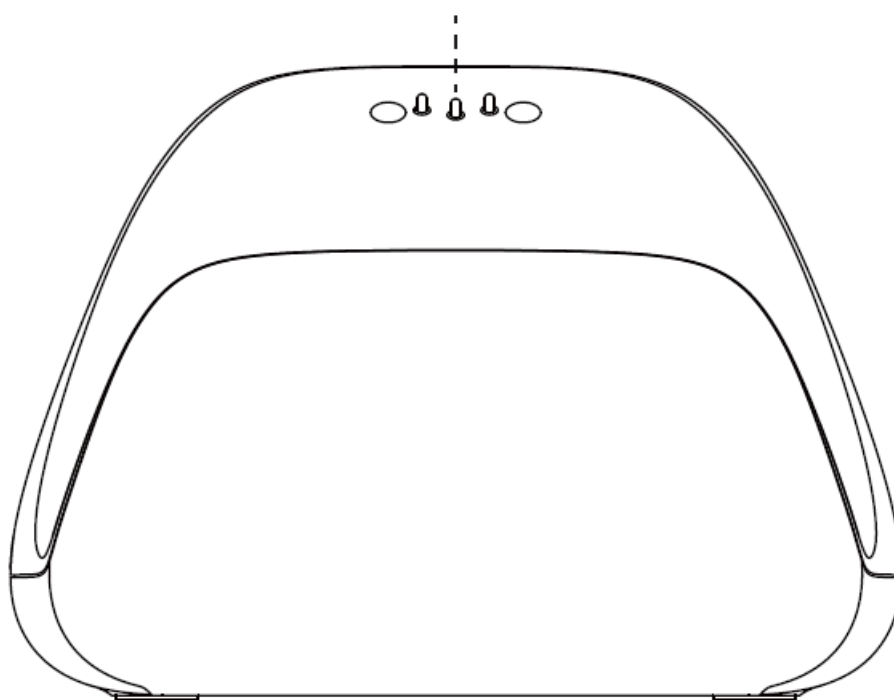
8BitDo®

8BitDo Charging Dock for Xbox Wireless Controllers

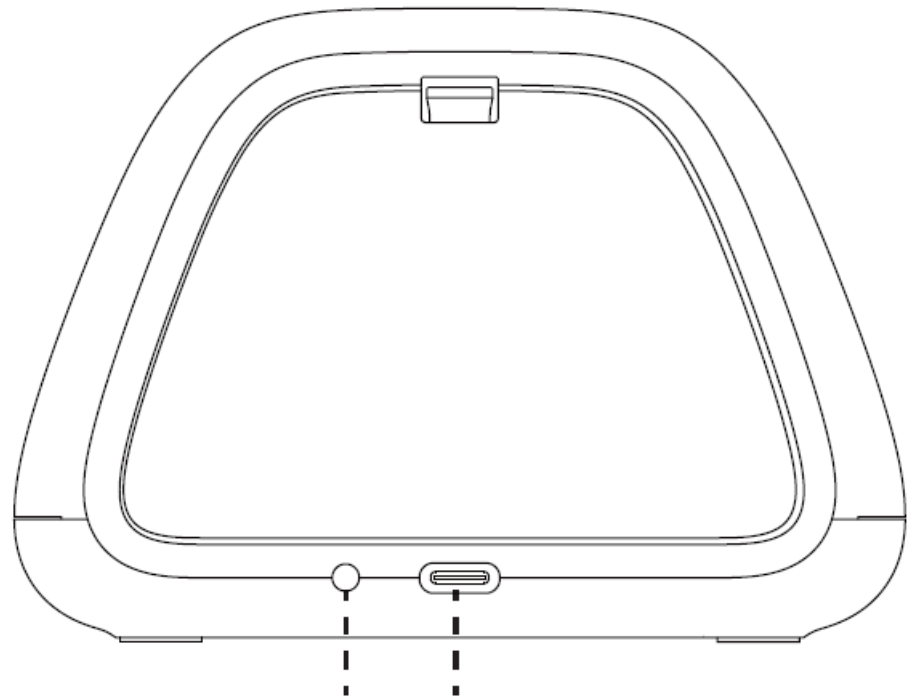


Top

Charging contacts



Bottom

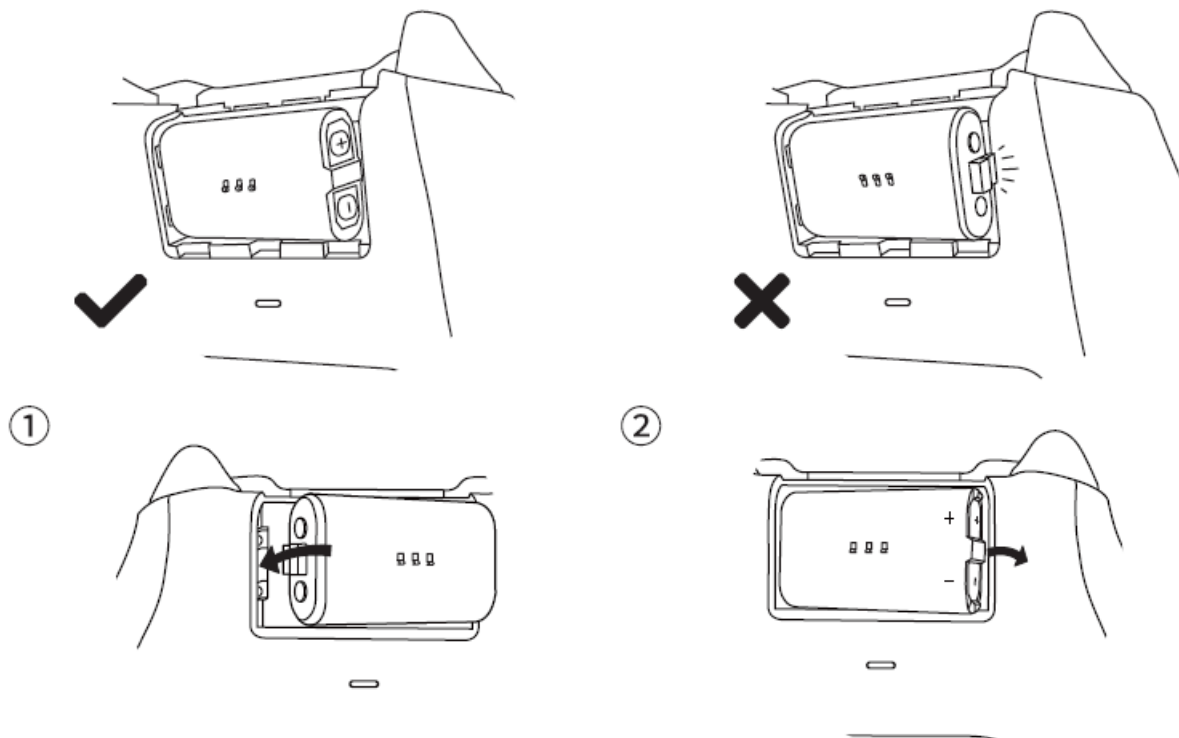


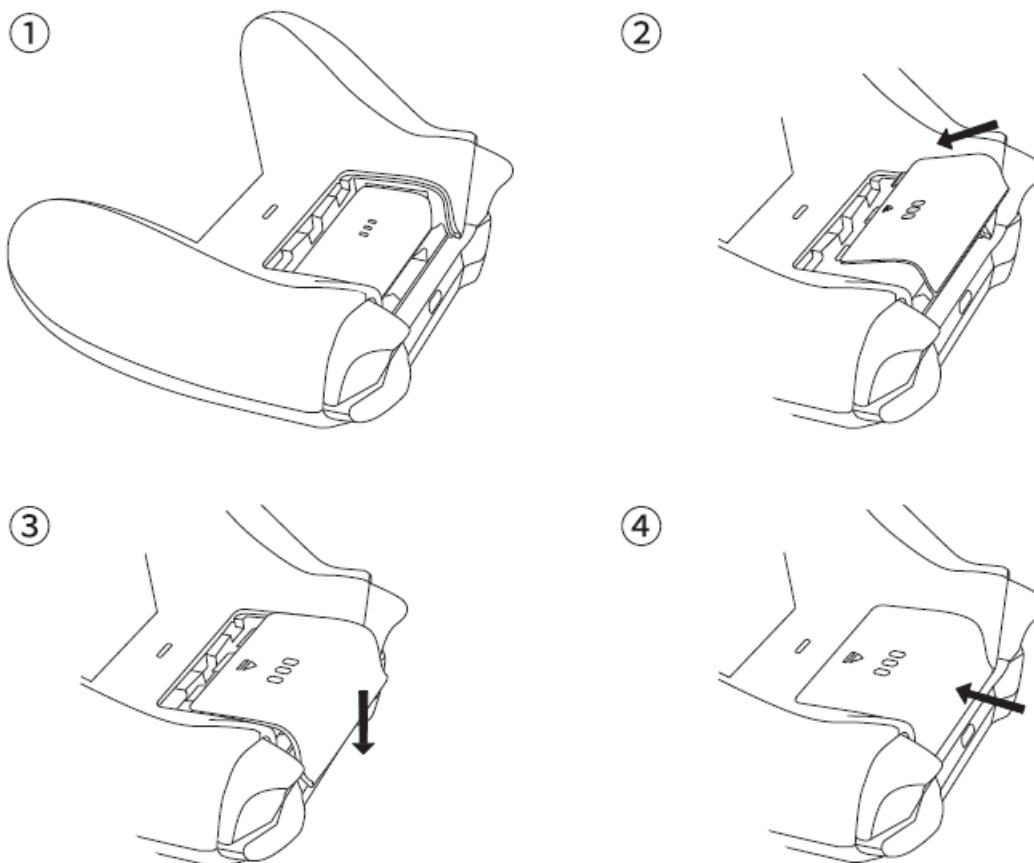
Brightness adjustment button

Type-C power port

Battery Installation

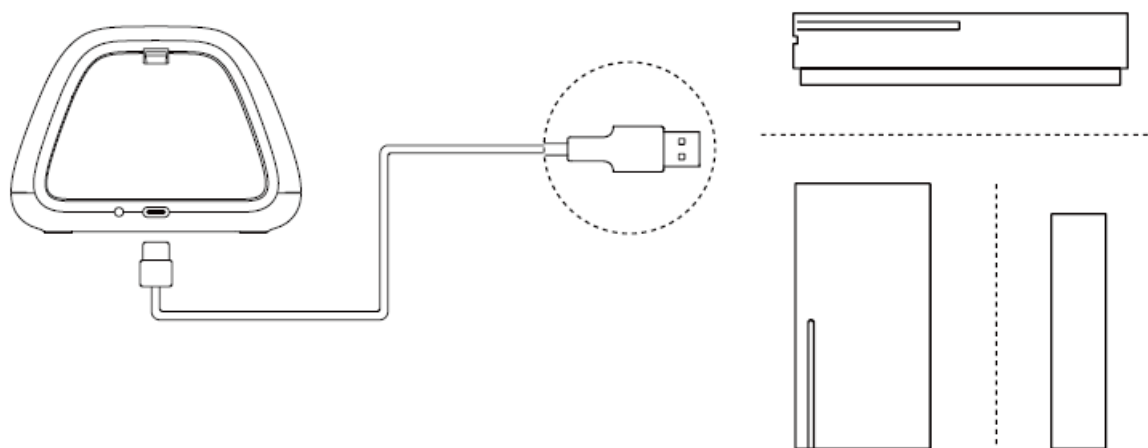
- Please ensure the battery is installed in the correct orientation. Incorrect installation may prevent the battery from charging and could lead to potential malfunctions
- There are two types of battery doors: one is compatible with Xbox One Wireless Controllers, and the other is compatible with Xbox Series Wireless Controllers





Power Supply

- Please connect the charging dock to the USB port of your Xbox console via a USB cable



Battery Charging

- Place the Xbox controller with the installed battery on the charging dock; the amber light will turn on and stay solid
- Built-in 1100mAh rechargeable battery with 22 hours of playtime and 3.5 hours of charging time

Power Indicator

- You can press the brightness control button to switch the power indicator light between bright and dim

Status- LED indicator –

- Power is on..... White LED lights up for 3 seconds
- Battery charging..... Amber light stays solid
- Charging error..... Amber light blinks
- Fully charged..... White LED stays solid

Safety Guidelines

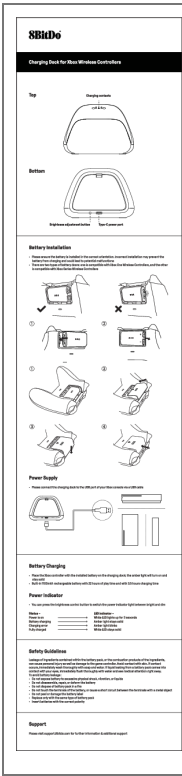
Leakage of ingredients contained within the battery pack, or the combustion products of the ingredients, can cause personal injury as well as damage to the game controller. Avoid contact with skin. If contact occurs, immediately wash thoroughly with soap and water. If liquid leaking from a battery pack comes into contact with your eyes, immediately flush thoroughly with water and see medical attention right away. To avoid battery leakage:

- Do not expose the battery to excessive physical shock, vibration, or liquids
- Do not disassemble, repair, or deform the battery
- Do not dispose of the battery pack in a fire
- Do not touch the terminals of the battery, or cause a short circuit between the terminals with a metal object Do not peel or damage the battery label
- Replace only with the same type of battery pack
- Insert batteries with the correct polarity

Support

Please visit support.8bitdo.com for further information & additional support.

Documents / Resources



[8BitDo Charging Dock for Xbox Wireless Controllers](#) [pdf] User Guide
Charging Dock for Xbox Wireless Controllers, Charging, Dock for Xbox Wireless Controllers, Xbox Wireless Controllers, Wireless Controllers, Controllers

References

- [User Manual](#)