

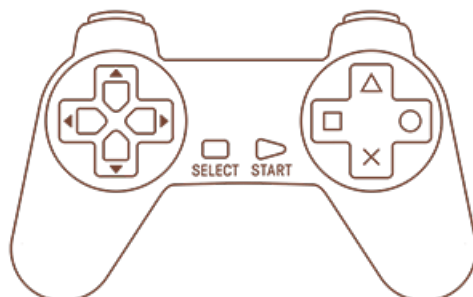
8BitDo DIY For PS Classic User Manual

[Home](#) » [8Bitdo](#) » 8BitDo DIY For PS Classic User Manual

Contents [[hide](#)]

- [1 8BitDo DIY For PS Classic User Manual](#)
- [2 Instructions- P30 classic Modkit](#)
- [3 Switch](#)
- [4 Android \(D – input \)](#)
- [5 Windows \(X – input \)](#)
- [6 MacOS](#)
- [7 Battery](#)
- [8 Support](#)
- [9 FAQ – Frequently Asked Questions](#)
- [10 Download](#)
- [11 Related Posts](#)

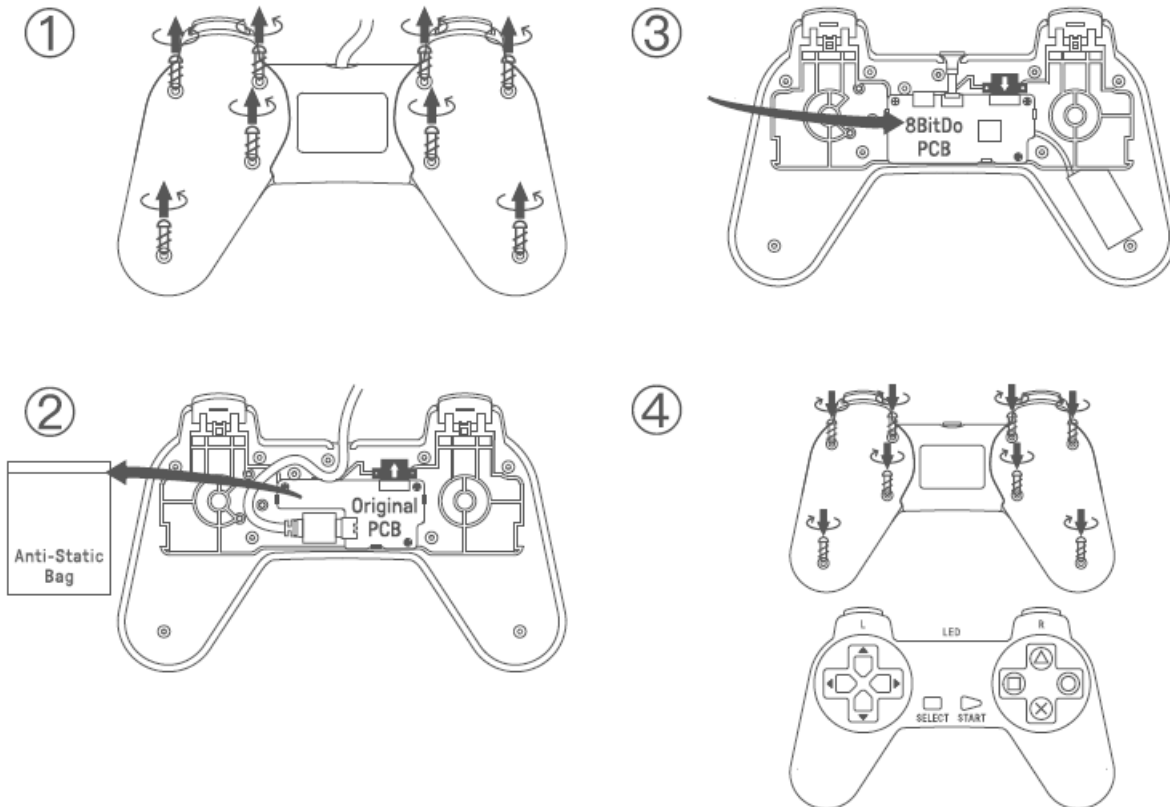
8BitDo DIY For PS Classic User Manual



Instructions- P30 classic Modkit

- Please handle it with care.

We are not responsible for any damage caused in use.



Switch

1. Press \square + start to turn on the controller
2. Press and hold select for 3 seconds to enter pairing mode. Blue LED will rapidly blink
3. Go to your Switch Home Page to click on Controllers, then click on Change Grip/Order. LED becomes solid when connection is successful
4. Controller will auto reconnect to your Switch with the press of start once it has been paired

- When connected to your Switch. select+ down= Switch HOME button

Android (D – input)

1. Press X + start to turn on the controller
2. Press and hold select for 3 seconds to enter pairing mode. Blue LED will rapidly blink
3. Go to your Android device's Bluetooth setting, pair with [8Bitdo P30 classic Modkit]. LED becomes solid when connection is successful
4. Controller will auto reconnect to your Android device with the press of start once it has been paired

Windows (X – input)

1. Press Δ + start to turn on the controller
2. Press and hold select for 3 seconds to enter pairing mode. Blue LED will rapidly blink
3. Go to your Windows device's Bluetooth setting, pair with [8BitDo P30 classic Modkit]. LED becomes solid when connection is successful

4. Controller will auto reconnect to your Windows device wrth the press of start once it has been paired

MacOS

1. Press **O +** start to turn on the controller
2. Press and hold eelect for 3 seconds to enter pairing mode. Blue LED will rapidly blink
3. Go to your macOS device's Bluetooth setting, pair with [Wi reless Controller]. LED becomes solid when connection is successful

4. Controlle rw ill auto reconnect to your macOS device with the press of start once it has been paired

Battery

Status	LED indicator
Low battery mode	LED blinks in red
Battery charging	LED stays solid red

Support

- Please visit support.8bitdo.com for further information & additional support

FAQ – Frequently Asked Questions

Can the Classic Kit and Original Kit be used interchangeably? What are the differences? How can I differentiate them from each other?

No, they can not be used interchangeably. The differences include the dimensions of the board and the placement of the buttons.

When choosing the right kit to buy, please refer to the controller port of your controller:

- A. The long and flat one is the original model.
- B. The short and narrow one is the Classic model.

Can I use it with an original PS controller with joysticks?

No, you can only use it with a standard original PS controller which has no joysticks.

What devices are they compatible with?

They are compatible with Switch, Windows 10, Android, macOS, Raspberry Pi.

They will auto reconnect to any device with the press of START once it has they paired successfully.

How can I charge the controller when modded?

The cable included in the packaging and the circular port attached to the port are for charging the battery.

What should I do if my controller does not charge and there is no LED indication of its charging?

- A. Open up the controller enclosure with the screwdriver provided in the packaging.
 - B. Connect the board to your PC via a USB cable.
 - C. LED turns on.
- If there is no LED, it means the power port is damaged.

Can I map the buttons? What can I do if I incorrectly mapped the buttons?

Yes, you can map the buttons. This is what you can do if the buttons are incorrectly mapped:

LEFT + Select : set Dpad as left analogue stick

Up + Select : reset Dpad

Right + Select : set Dpad as right analogue stick

Down + Select : Swap A/B and X/Y mapping

*Press and hold any of the key combinations above for 5 seconds to map the buttons.

*LED will blink in red to indicate the success of each button mapping.

*You need to reset the buttons manually.

How can I charge my controller after modifying it? How long can the battery last when fully charged?

We suggest you use a phone power adapter to charge the battery.

It uses a 180mAh rechargeable battery. It takes about one and half an hour to fully and can last for about 10 hours.

Can I use it as a wired controller?

No, you can not. The cable which comes with the board is a USB DC2.0 powering charging cable only.

Download

8BitDo DIY For PS Classic User Manual – [[Download PDF](#)]
