

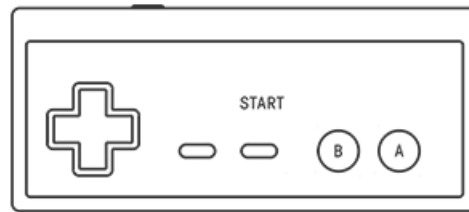
8BitDo DIY for NES/NES Classic User Manual

[Home](#) » [8Bitdo](#) » 8BitDo DIY for NES/NES Classic User Manual

Contents [[hide](#)]

- [1 8BitDo DIY for NES/NES Classic User Manual](#)
- [2 Instruction S-N30 Modkit](#)
- [3 Bluetooth Connection](#)
 - [3.1 Switch](#)
 - [3.2 Android](#)
 - [3.3 Windows](#)
- [4 8Bitdo Retro Receivers and use Adapter](#)
- [5 Button Mapping](#)
- [6 Battery](#)
- [7 Support](#)
- [8 FAQ – Frequently Asked Questions](#)
- [9 Download](#)
- [10 Related Posts](#)

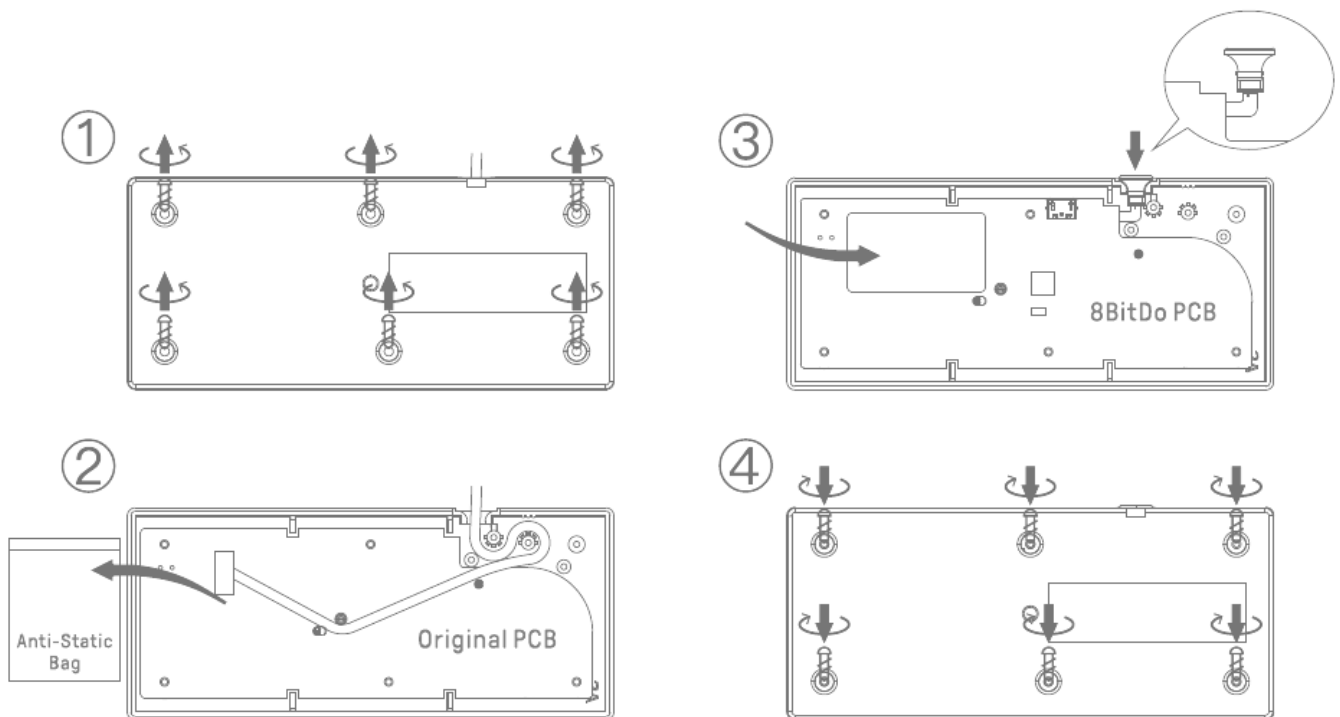
8BitDo DIY for NES/NES Classic User Manual

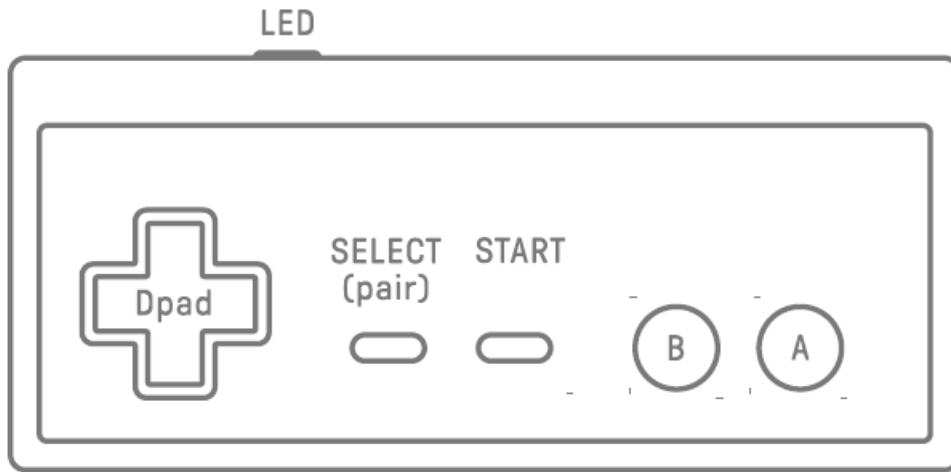


Instruction S-N30 Modkit

* Please handle it with care.

We are not responsible for any damage caused in use.





- Press START to turn on the controller
- Press and hold START for 3 seconds to turn off the controller
- Press and hold START for 8 seconds to force turn off the controller

Bluetooth Connection

Switch

1. Press START+ LEFT to turn on the controller, LEO will blink 4 times per cycle.
 2. Press and hold SELECT for 3 seconds to enter pairing mode. LEO will rapidly blink.
 3. Goto your Switch Home Page to click on Controllers, then click on Change Grip/Order and wait for controller to sync up. LEO will become solid when connection is successful.
 4. Controller will auto reconnect to your Switch with the press of START once it has been paired.
- When connected to your Switch, OOWN+SELECT = Switch HOME button.

Android

1. Press START+ 8 to turn on the controller, LEO will blink once per cycle.
2. Press and hold SELECT for 3 seconds to enter pairing mode. LED will rapidly blink.
3. Go to your Android device's Bluetooth setting, pair with [8Bitdo N30 Modkit]. LEO will become solid when connection is successful.
4. Controller will auto reconnect to your Android device with the press of START once it has been paired.

Windows

1. Press START+ UP to turn on the controller, LEO will blink twice per cycle.
2. Press and hold SELECT for 3 seconds to enter pairing mode. LED will rapidly blink.
3. Go to your Windows device's Bluetooth setting, pair with [8Bitdo N30 Mod kit]. LEO will become solid when connection is successful.
4. Controller will auto reconnect to your Windows device with the press of START once it has been paired

MacOS

1. Press and hold START+ A to turn on the controller, LED will blink 3 times per cycle.
2. Press and hold SELECT for 3 seconds to enter pairing mode. LED will rapidly blink.

3. Go to your macOS device's Bluetooth setting, pair with [Wireless Controller]. LED will become solid when connection is successful.
4. Controller will auto reconnect to your macOS device with the press of START once it has been paired.

8Bitdo Retro Receivers and use Adapter

1. Press START+ B to turn on the controller, LED will blink once per cycle.
2. Press both PAIR button on the receiver/Adapter and SELECT on the controller to sync them.
3. Both LEDs on the receiver/Adapter and controller will become solid when connection is successful.

Button Mapping

Press and hold HOT KEY for 3 seconds to map DPAD and other buttons, LED will blink once in red when successful:

SELECT+UP: DPAD=DPAD

SELECT+ LEFT: DPAD=LEFT JOYSTICK

SELECT+RIGHT: DPAD= RIGHT JOYSTICK

SELECT+DOWN: Swap A-B and X-Y

- Works only before connecting anything.

Battery

Status – LED Indicator

Low battery mode – Red LED blinks

Battery charging – Red LED stays solid

Battery fully charged – LED turns off

- Built-in 230mAh Li-ion with 10 hours of play time.
- Rechargeable via USB-C with 30 minute charging time.

Support

Please visit <http://support.8bitdo.com/> for further information and additional support.

FAQ – Frequently Asked Questions

Can the Classic Kit and Original Kit be used interchangeably? What are the differences? How can I differentiate them from each other?

No, they can not be used interchangeably. The differences include the thickness of the board and the placement of the buttons.

When choosing the right kit to buy, please refer to the controller port of your controller:

- A. The long and flat one is the original model
- B. The short and narrow one is the Classic model

What devices are they compatible with?

They are compatible with Switch, Windows 10, Android, macOS, Raspberry Pi.

They will auto reconnect to any device with the press of START once it has been paired successfully.

How can I upgrade the firmware?

- A. Download the Firmware Updater from <https://support.8bitdo.com/firmware-updater.html> first
- B. Connect the board to your computer via a USB cable
- C. Choose the right file for your kit to run

Note:

- a. the cable included in the packaging and the circular port attached to the port are for power charging only.
- b. be extra careful with power port during the procedure to avoid damaging it.

How can I charge the controller when modded?

The cable included in the packaging and the circular port attached to the port are for charging the battery.

What should I do if my controller does not charge and there is no LED indication of its charging?

- A. Open up the controller enclosure with the screwdriver provided in the packaging
- B. Connect the board to your PC via a USB cable
- C. LED turns on

If there is no LED, it means the power port is damaged

Can I map the buttons? What can I do if I incorrectly mapped the buttons?

Yes, you can map the buttons. This is what you can do if the buttons are incorrectly mapped:

LEFT + Select : set Dpad as left analogue stick

Up + Select : reset Dpad

Right + Select : set Dpad as right analogue stick

Down + Select : Swap A/B and X/Y mapping

*Press and hold any of the key combinations above for 5 seconds to map the buttons.

*LED will blink in red to indicate the success of each button mapping.

*You need to reset the buttons manually.

How can I charge my controller after modifying it? How long can the battery last when fully charged?

We suggest you use a phone power adapter to charge the battery.

It uses a 180mAh rechargeable battery. It takes about one and half an hour to fully and can last for about 10 hours.

Can I use it as a wired controller?

No, you can not. The cable which comes with the board is a USB DC2.0 powering charging cable only.

Download

8BitDo DIY for NES/NES Classic User Manual – [[Download PDF](#)]
