



## 76 PROJECTS TT Mount 2.0 Race and Modular Instructions

[Home](#) » [76 PROJECTS](#) » 76 PROJECTS TT Mount 2.0 Race and Modular Instructions 



### Contents

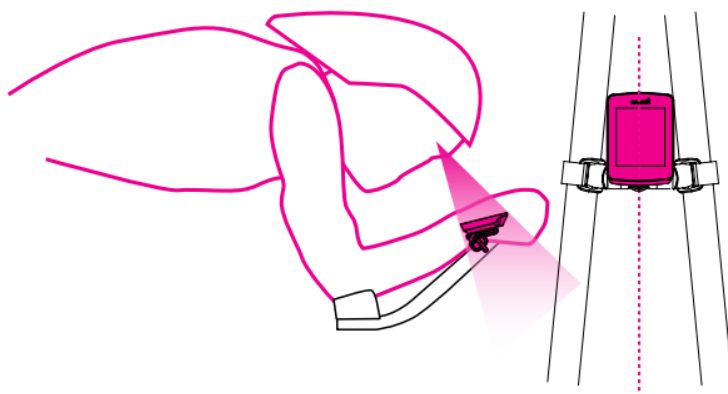
- [1 TT Mount 2.0 Race and Modular](#)
- [2 SPACERS GUIDE](#)
- [3 EXPLODED DIAGRAM](#)
- [4 Documents / Resources](#)
  - [4.1 References](#)

### TT Mount 2.0 Race and Modular

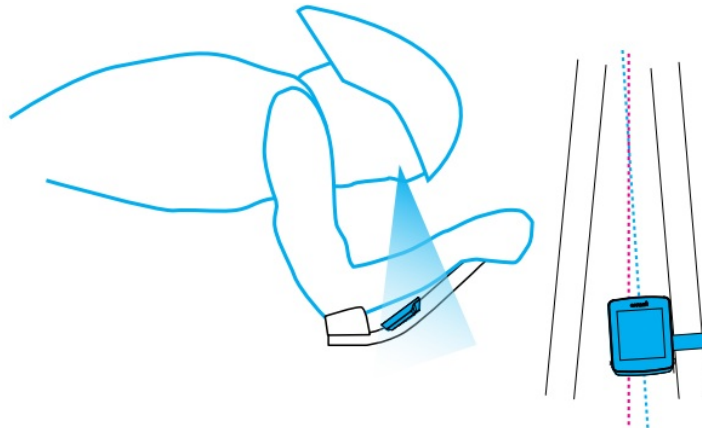
#### **STAY AERO. MOVE YOUR COMPUTER, NOT YOUR HEAD.**

With the unique range of adjustability, the 76 Projects TT Mount allows the rider to maintain an aero position whilst viewing key data from their computer screen.

We recommend the mount be placed behind the hands whilst in riding position and angling the screen for perfect viewing. This will minimise head movement and helps to maintain concentration.



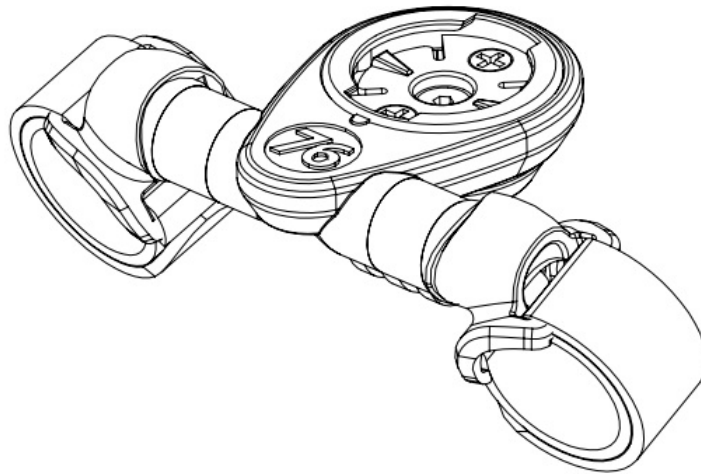
- Aero position maintained
- Perfect symmetry
- Optimised viewing
- 3 way adjustability



### Standard

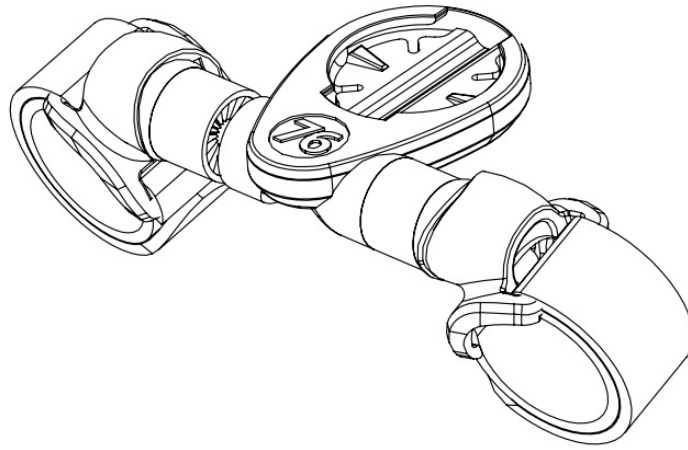
- Negatively impacts aerodynamics (increased head movement)
- Limited ability for positioning

### TT MODULAR



- Replaceable insert
- Module system for lights & devices.
- Bar centres 65-105mm

### TT RACE



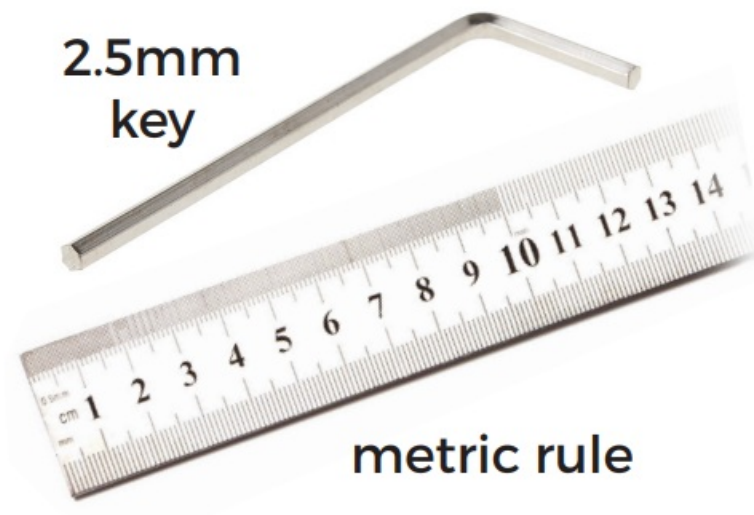
- Low profile
- Computer only
- Bar centres 60-100mm

## CONTENTS



**MOUNT**  
includes 20mm screws

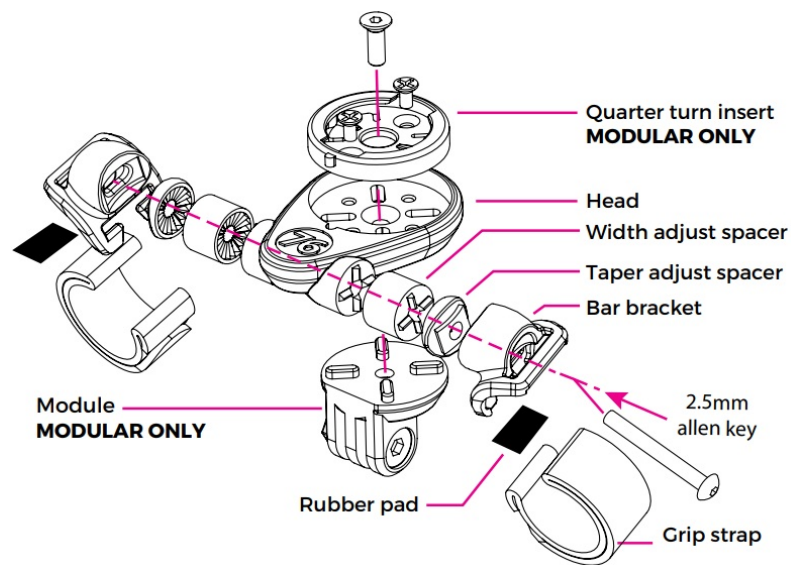
## TOOLS REQUIRED



## SPACERS GUIDE

Pace – Centre to Centre mm	Modular – Centre to Centre mm	Screws mm	Spacers mm
60	65	20	
64	69	20	2
66	71	20	3
70	75	25	5
74	79	25	5+2
76	81	25	5+3
80	85	30	10
84	89	30	10+2
86	91	30	10+3
90	95	35	10+5
94	98	35	10+5+2
96	101	35	10+5+3
100	105	40	10+5+3+2

## EXPLODED DIAGRAM



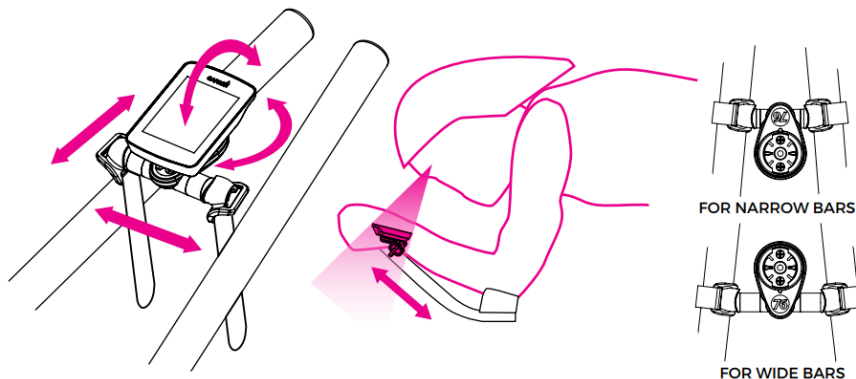
## STEP ONE

Choose your desired position for optimum viewing.

Tilt = 15° Step

Taper = 0° to 10°

Width (see guide)



## STEP TWO

Measure width of bar centres.

Use guide to calculate screws and spacers required.

Fit rubber pads and assemble see exploded diagram



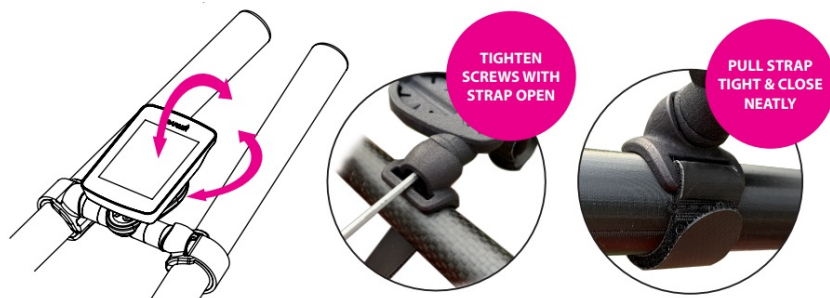
## STEP THREE

Make final adjustments.

Thread strap, pull to remove slack only.

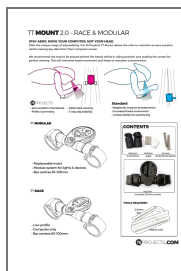
**DO NOT OVERTIGHTEN**

See video link below



<https://cdn.shopify.com/videos/c/o/v/1de97f88be964663bc05a8366c6c8d2d.mp4>  
[76PROJECTS.COM](https://76PROJECTS.COM)

## Documents / Resources



[76 PROJECTS TT Mount 2.0 Race and Modular](#) [pdf] Instructions  
TT Mount 2.0 Race and Modular, TT Mount, 2.0 Race and Modular, Race and Modular, Modular

## References

- [User Manual](#)

[Manuals+](#), [Privacy Policy](#)

This website is an independent publication and is neither affiliated with nor endorsed by any of the trademark owners. The "Bluetooth®" word mark and logos are registered trademarks owned by Bluetooth SIG, Inc. The "Wi-Fi®" word mark and logos are registered trademarks owned by the Wi-Fi Alliance. Any use of these marks on this website does not imply any affiliation with or endorsement.