

70mai

70mai M310
Dash Cam K
Resolution
Type-C
Interface
Voice
Control



70mai M310 Dash Cam K Resolution Type-C Interface Voice Control User Manual

[Home](#) » [70mai](#) » 70mai M310 Dash Cam K Resolution Type-C Interface Voice Control User Manual 

Contents

- 1 70mai M310 Dash Cam K Resolution Type-C Interface Voice Control
- 2 Product overview
- 3 Package contents
- 4 Installation
- 5 Button functions
- 6 Voice control
- 7 Specifications
- 8 Precautions
- 9 Safety information
- 10 Memory card instructions
- 11 Regulatory compliance information
- 12 ISED compliance statement
- 13 FCC STATEMENT
- 14 Documents / Resources
 - 14.1 References
- 15 Related Posts

70mai

70mai M310 Dash Cam K Resolution Type-C Interface Voice Control



Specifications:

- Brand: 70mai
- Model: Dash Cam M310
- Power Source: Car charger
- Memory Card Slot: Yes
- Connectivity: Wi-Fi
- Compatibility: Android 5.0 & iOS 11.0 or above

Product Overview:

The 70mai Dash Cam M310 is a compact and user-friendly device designed to capture high-quality footage while driving. It features a mounting bracket, ventilation holes, a camera with a ring-shaped indicator, a power button, microphone, speaker, memory card slot, and power port.

Installation:

1. **Installing the Electrostatic Sticker:** Paste the sticker on the windshield, remove air bubbles, and ensure a clean, dry surface.
2. **Installing the Memory Card:** Insert the card into the slot with contacts facing left.
3. **Mounting the Dash Cam:** Paste the dash cam onto the sticker.
4. **Connecting the Power Cord:** Connect the dash cam to the car charger.
5. **Routing Cable:** Connect the charger to the power outlet and start the car engine.
6. **Adjusting the Camera Angle:** Use the 70mai app to adjust the camera angle.

Button Functions:

Action	Function
Press once	Turn on the device

Connecting with the 70mai App:

1. **Download the App:** Scan the QR code or search for “70mai” in the app store.
2. **Connect to Dash Cam:** Turn on the dash cam, enable Wi-Fi, and connect it to the app following on-screen instructions.

3. **View Live Video:** Once connected, access the dash cam's homepage in the app to view live video and configure settings.

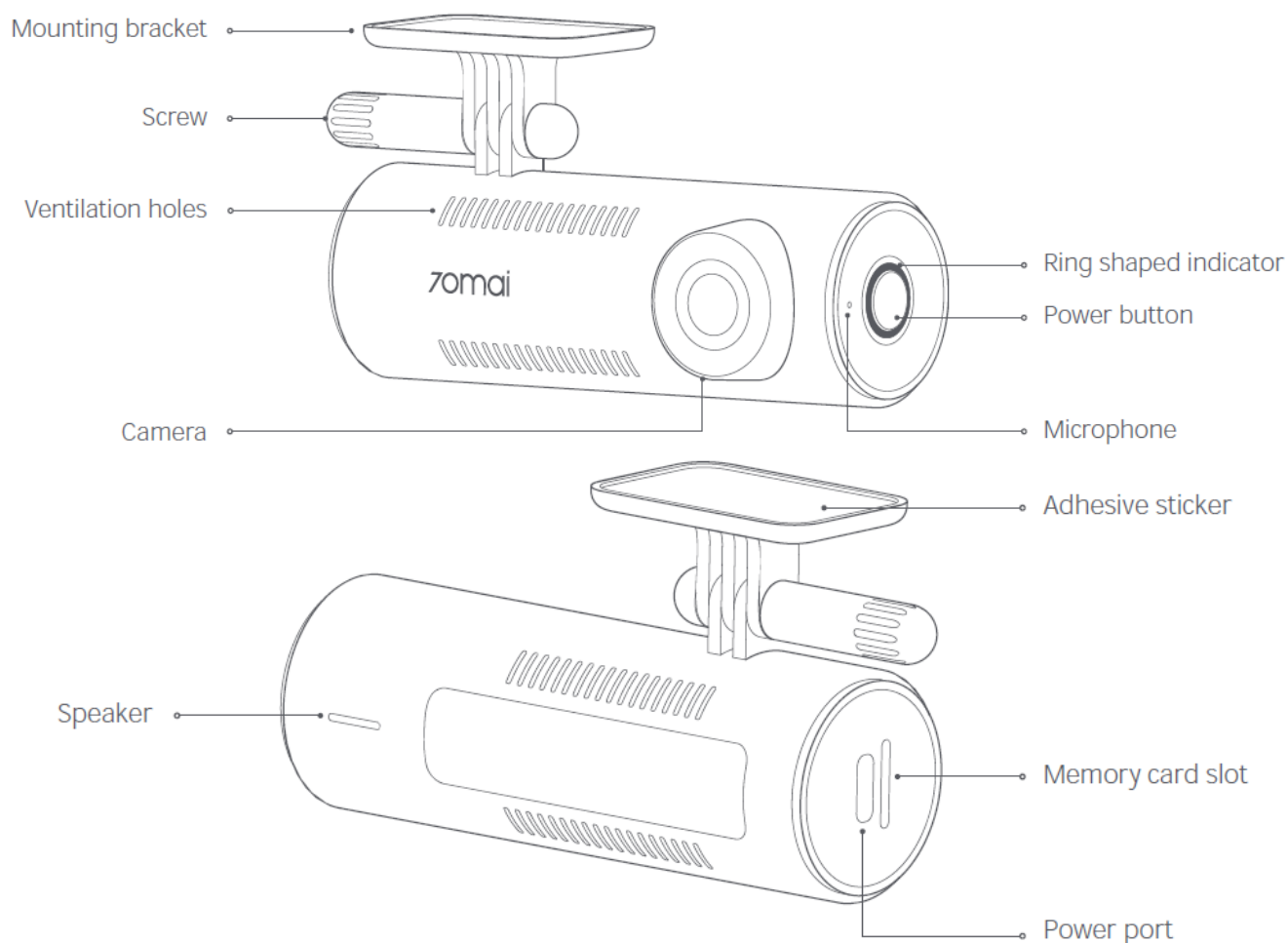
FAQ:

• **Q: What should I do if the dash cam does not turn on?**

A: Make sure the dash cam is properly connected to the power source and try pressing the power button for about 3 seconds.

Product overview

Please read this manual carefully before using the product and keep it in a safe place.



Package contents

1. Dash Cam × 1
2. Power cord × 1
3. Car charger × 1
4. Electrostatic sticker × 2
5. Adhesive sticker × 1

6. Wiring trim tool × 1
7. User manual × 1

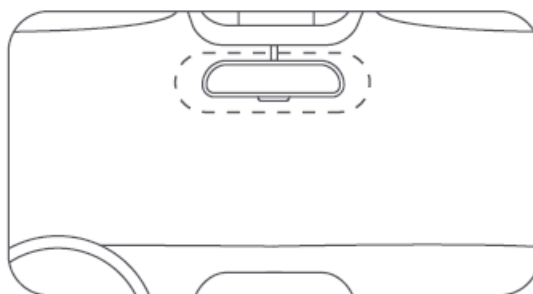
Note: Illustrations of the product, accessories, and user interface in the user manual are for reference purposes only. The actual product and functions may vary due to product enhancements.

Installation

1. Installing the electrostatic sticker

Paste the electrostatic sticker on the recommended area on the front windshield. Press the sticker to remove air bubbles out.

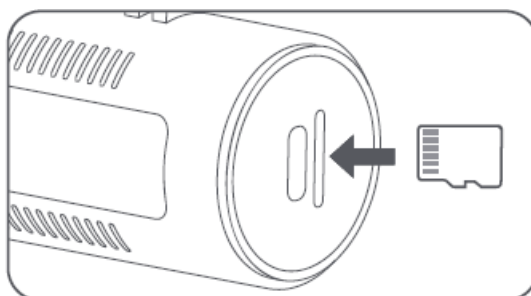
Avoid the edge of the windshield and select the flat and smooth area for the installation.



Note: Keep windshield clean and dry without liquid residue to prevent the sticker from losing adhesion and dash cam from dropping.

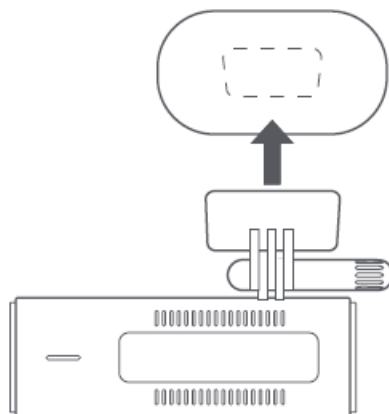
2. Installing the memory card

Insert the memory card into the card slot with the contacts side facing left, as illustrated in the figure.



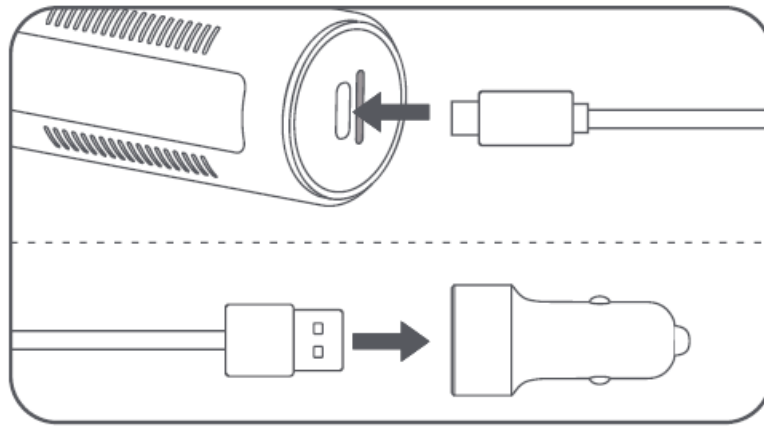
3. Mounting the dash cam

Paste the dash cam onto the electrostatic sticker.



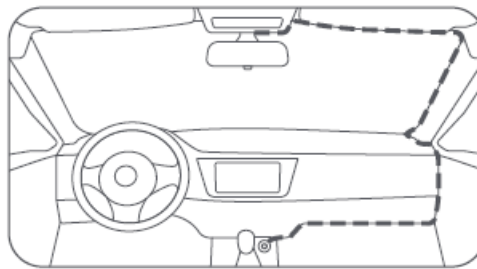
4. Connecting the power cord

Connect the dash cam and car charger with the power cord.



5. Routing cable

Route the power cord to the vehicle's power outlet and plug the car charger into the power outlet. Start the car engine, and the dash cam will automatically turn on.

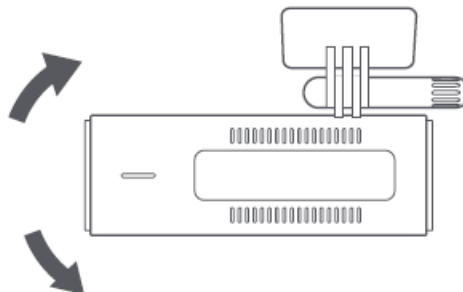


Notes:

- Use the included wiring trim tool to hide the power cord underneath the vehicle's headliner and rubber seal along the A-pillar.
- Depending on the vehicle, the power outlet may be located in a different position. The provided figure is for reference only.

Adjusting the camera angle

Bind the dash cam to the 70mai app and enter the dash cam's homepage. Adjust the camera angle based on the real-time image on the screen.



Button functions

Dash cam status	Operation	Function
Turned off (Dash cam should connect with power source)	Press once	Turn on the device
Turned on	Press and hold for about 3 seconds	Turn off the device
	Press once	Turn the Wi-Fi on/off
	Press 4 times in a row	Format the memory card
	Press 5 times in a row	Reset factory settings
	Press and hold for about 15 seconds	Force restart the device
Receiving the connection request from the phone	Press once	Confirm the connection authorization

Connecting with the 70mai app

This product needs to be used in conjunction with the 70mai app. Follow the steps below to connect it with the app.

1. Scan the QR code to download and install the app. Or search for “70mai” in the app store to download and install it.
- 2.



Scan to download the app

- Open the app, tap “+” in the device page, find the corresponding dash cam type and tap the dash cam image.
3. Turn on the dash cam and enable the Wi-Fi hotspot. Follow the on-screen instructions to connect the dash cam’s Wi-Fi hotspot in your phone’s settings.
 4. Once successfully connected, go back to the 70mai app. In the device page, connect the dash cam and enter the dash cam’s homepage. You can view the live video and configure the dash cam settings.

Note: Android 5.0 & iOS 11.0 or above is required to connect to the dash cam’s Wi-Fi hotspot with a mobile phone. If you need more help when connecting the app, please scan the QR code below to view the tutorial video.



Scan to view the video

The Wi-Fi hotspot information is as follows:

Hotspot name: 70mai_M310_XXXX (Please check the label on the device for the hotspot name.) Default password: 12345678]

Voice control

Dash cam supports voice control. When the dash cam is operating, voice commands from the user will trigger the corresponding functions. If the system language of the dash cam is set to Traditional Chinese, the Mandarin voice commands are supported. If any other language is set, only the English voice commands are supported. The voice commands are as follows:

Voice command	Function
Take photo	Dash cam will take a photo and save it to the album.
Lock the video	Dash cam will record an emergency video and store it in the emergency video directory.
Turn on audio	Dash cam will record audio as well as videos.
Turn off audio	Dash cam will not record audio but only videos.
Turn on hotspot	Dash cam's Wi-Fi hotspot will turn on.
Turn off hotspot	Dash cam's Wi-Fi hotspot will turn off.

Note: When the dash cam is connected to the 70mai app, voice control is not supported.

Specifications

- Product: Dash Cam Model: M310
- Input: 5V 2A
- Battery capacity: 300mAh
- Resolution: 2304 × 1296 Lens: FOV 130°/ F2.0
- Battery type: Li-ion battery
- Power supply: Car cigarette lighter
- Item dimensions: 100.3 × 52.5 × 36.1mm
- Wireless connectivity: Wi-Fi IEEE 802.11b/g/n 2.4GHz Wi-Fi
- operation frequency: 2400–2483.5MHz
- Wi-Fi maximum output: < 20dBm

Precautions

Before using this dash cam, please read all the precautions and user guide to ensure correct and safe use.

- This dash cam is a driving aid designed to record external images of the vehicle. And it does not have the function of ensuring the user's driving safety. Users must abide by local traffic rules and regulations and take

driving safety as a priority consideration. Do not operate this product while driving.

- Due to differences in vehicle conditions, driving style, driving environment, and other factors, some functions may not work properly. A power failure, usage in environments outside the normal operating temperature or humidity range, a collision, or a damaged memory card may cause the dash cam to function abnormally. There is no guarantee that this dash cam will function normally under all circumstances. Videos recorded by this dash cam are for reference purposes only.
- Please install this dash cam correctly, and do not block the driver's line of sight, or block the vehicle's airbag, in order to avoid product failure or personal injury.
- If the front windshield where the dash cam is installed is covered with colored automotive film, it may affect the video recording quality or cause video distortion. If metallic film is applied to the front windshield, it may lead to a decrease in GPS signal quality for dash cam models equipped with built-in GPS modules.
- Avoid collisions or forceful jolts to the dash cam, otherwise the product may malfunction. Keep this dash cam away from any strong magnetic fields.
- Never use chemical solvent or detergent to wash the dash cam.
- Do not use this dash cam in environments with temperatures over 60°C or below -10°C.
- When the dash cam has been operating for a period of time, the temperature of the outer casing will rise, so use caution when touching it.
- Please only use this dash cam within the scope permitted by law.

Safety information

- Please use the included car charger, power cord, and other accessories in order to avoid product failure due to non-conformance. We shall not be held liable for any loss or damage caused by the use of a non-genuine car charger or power cord.
- If you use power adapter to charge the dash cam, only use the power adapters that comply with the local safety standards or certified and supplied by qualified manufacturers.
- Disposal of a battery into fire or a hot oven, or mechanically crushing or cutting of a battery, that can result in an explosion.
- Leaving a battery in an extremely high temperature surrounding environment that can result in an explosion or the leakage of flammable liquid or gas.
- A battery subjected to extremely low air pressure that may result in an explosion or the leakage of flammable liquid or gas.
- This device is equipped with a built-in battery that cannot be removed or replaced. Do not disassemble or modify the battery by yourself.
- Replacement of a battery with an incorrect type can defeat a safeguard (for example, in the case of some lithium battery types).
- The dash cam and its accessories may contain small parts. To avoid choking or other hazards or damages caused by the children, keep the dash cam out of the reach of children.

Memory card instructions

- A memory card (sold separately) must be installed in the dash cam before use.
- The dash cam supports standard microSD cards. Please use memory cards with capacity of 32GB ~ 128GB and rating of class 10, U1 or higher.

- The default file partition format of the memory card may be inconsistent with the format supported by the dash cam. When inserting the memory card for the first time, please format it in the dash cam before use. Formatting the memory card will delete all files on the card. Please back up important data to another device beforehand.
- The memory card may become damaged or deteriorated after repeated cycles of overwriting, and this may affect its ability to save video and image files. If this occurs, immediately replace it with a new memory card.
- Please use a high-quality memory card purchased from a reputable vendor. Inferior memory cards may have issues such as actual reading/writing speeds that do not match the stated speeds, and an actual storage capacity that does not match the stated storage capacity. We shall not be held liable for lost or damaged videos caused by the use of a low-quality memory card.
- Do not insert or remove a memory card while the dash cam is turned on.

Regulatory compliance information

WEEE information



■ All products bearing this symbol are waste electrical and electronic equipment (WEEE as in directive 2012/19/EU) which should not be mixed with unsorted household waste. Instead, you should protect human health and the environment by handing over your waste equipment to a designated collection point for the recycling of waste electrical and electronic equipment, appointed by the government or local authorities. Correct disposal and recycling will help prevent potential negative consequences to the environment and human health. Please contact the installer or local authorities for more information about the location as well as terms and conditions of such collection points.

EU declaration of conformity



The manufacturer hereby, declares that this equipment is in compliance with the applicable Directives and European Norms, and amendments. The full text of the EU declaration of conformity is available at the following internet address: <https://help.70mai.asia/1193.html>



Hereby, 70mai Co.,Ltd. declares that the radio equipment type M310 is in compliance with Radio Equipment Regulations 2017. The full text of the UKCA declaration of conformity is available at the following internet address: <https://help.70mai.asia/2145.html>

ISED compliance statement

This device contains licence-exempt transmitter(s)/receiver(s) that comply with Innovation, Science and Economic Development Canada's licence-exempt RSS(s). Operation is subject to the following two conditions:

1. This device may not cause interference.
2. This device must accept any interference, including interference that may cause undesired operation of the device.

ISED Radiation Exposure statement

This equipment complies with IC RSS-102 radiation exposure limits set forth for an uncontrolled environment. This

equipment should be installed and operated with minimum distance 20 cm between the radiator and your body.

FCC STATEMENT

Changes or modifications not expressly approved by the party responsible for compliance could void the user's authority to operate the equipment. This equipment has been tested and found to comply with the limits for a Class B digital device, pursuant to Part 15 of the FCC Rules. These limits are designed to provide reasonable protection against harmful interference in a residential installation. This equipment generates, uses and can radiate radio frequency energy and, if not installed and used in accordance with the instructions, may cause harmful interference to radio communications. However, there is no guarantee that interference will not occur in a particular installation. If this equipment does cause harmful interference to radio or television reception, which can be determined by turning the equipment off and on, the user is encouraged to try to correct the interference by one or more of the following measures:

- Reorient or relocate the receiving antenna.
- Increase the separation between the equipment and receiver.
- Connect the equipment into an outlet on a circuit different from that to which the receiver is connected.
- Consult the dealer or an experienced radio/TV technician for help.

This device complies with Part 15 of the FCC Rules. Operation is subject to the following two conditions:

1. This device may not cause harmful interference, and
2. This device must accept any interference received, including interference that may cause undesired operation.


This equipment complies with FCC radiation exposure limits set forth for an uncontrolled environment. This equipment should be installed and operated with a minimum distance of 20 cm between the radiator & your body. This transmitter must not be co-located or operating in conjunction with any other antenna or transmitter.

FCC ID: 2AOK9-M310



- Service: help@70mai.com
- For further information, please go to www.70mai.com
- Manufacturer: 70mai Co., Ltd.
- Address: Room 2220, Building 2, No. 588 Zixing Road, Minhang District, Shanghai, China

Documents / Resources

	<p>70mai M310 Dash Cam K Resolution Type-C Interface Voice Control [pdf] User Manual M310 Dash Cam K Resolution Type-C Interface Voice Control, M310, Dash Cam K Resolution Type-C Interface Voice Control, Resolution Type-C Interface Voice Control, Interface Voice Control, Voice Control, Control</p>
---	--

References

- [70mai: Innovator in Smart Dash Cams](#)
- [User Manual](#)

[Manuals+](#), [Privacy Policy](#)

This website is an independent publication and is neither affiliated with nor endorsed by any of the trademark owners. The "Bluetooth®" word mark and logos are registered trademarks owned by Bluetooth SIG, Inc. The "Wi-Fi®" word mark and logos are registered trademarks owned by the Wi-Fi Alliance. Any use of these marks on this website does not imply any affiliation with or endorsement.