



509 Ignite S1 Flow Goggle Instruction Manual

[Home](#) » [509](#) » 509 Ignite S1 Flow Goggle Instruction Manual 

Contents

- [1 509 Ignite S1 Flow Goggle](#)
- [2 QUICK SETUP INSTRUCTIONS](#)
- [3 MANUAL MODE](#)
- [4 AUTO MODE](#)
- [5 LED ALERTS](#)
- [6 BATTERY LIFE](#)
- [7 LENS REPLACEMENT](#)
- [8 IMPORTANT SAFETY INSTRUCTIONS](#)
- [9 WARRANTY](#)
- [10 FCC WARNING](#)
- [11 Documents / Resources](#)
- [12 Related Posts](#)




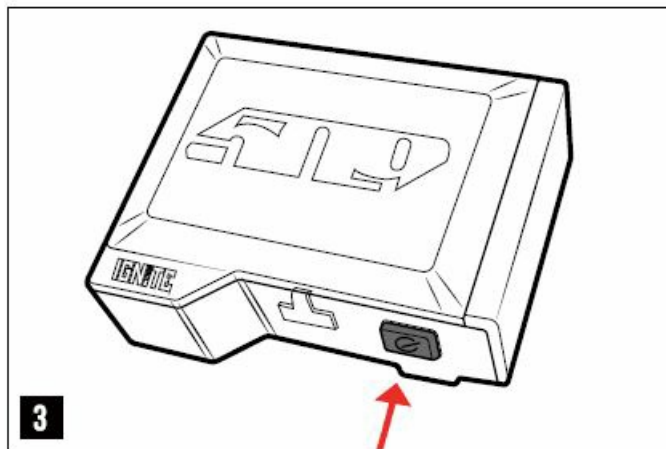
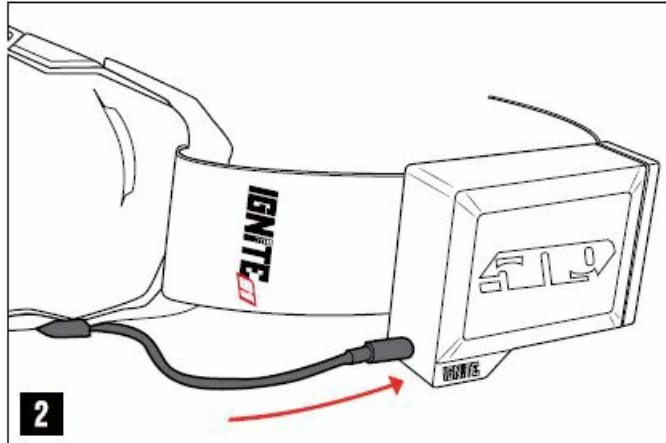
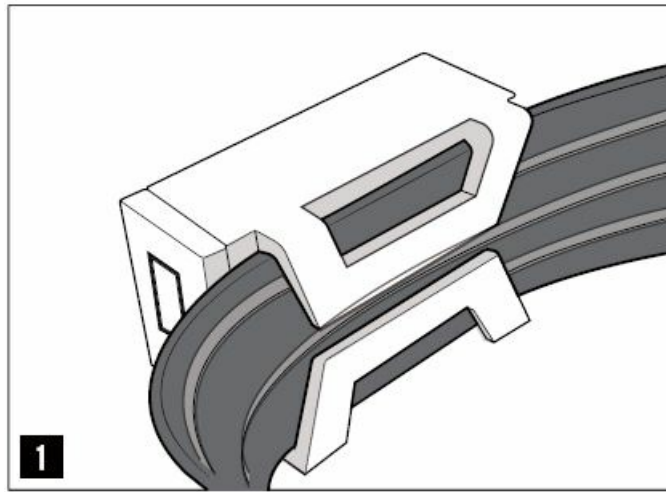
509 Ignite S1 Flow Goggle




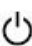

CHARGE YOUR IGNITE BATTERY PACK TO FULL POWER WITH PROVIDED POWER CORD BEFORE SETUP.

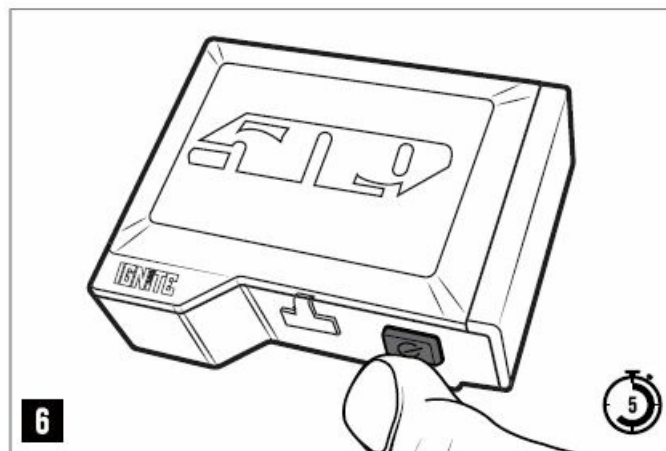
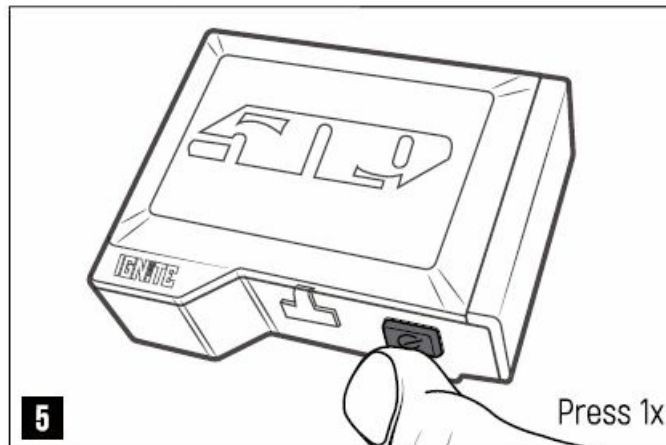
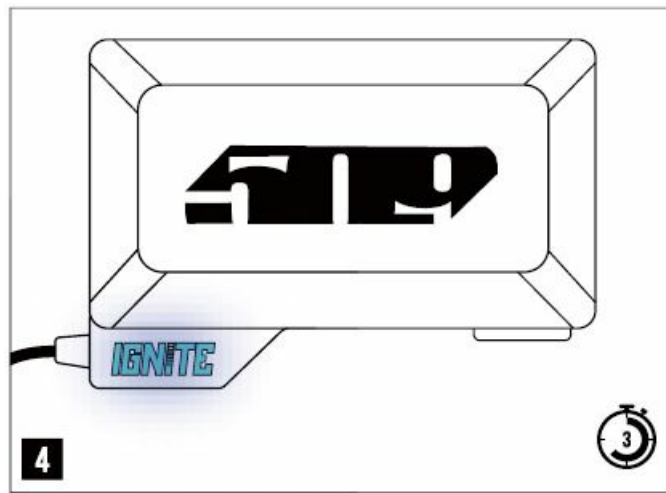
QUICK SETUP INSTRUCTIONS

1. Secure the IGNITE battery pack to your goggle strap.
2. Connect lens cable plug to IGNITE battery pack jack.
3. Press and hold  (the button for 3 seconds. The LED indicator will be BLUE.






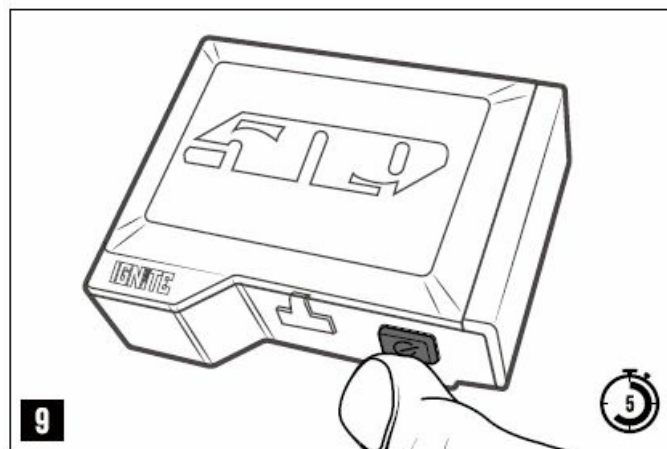
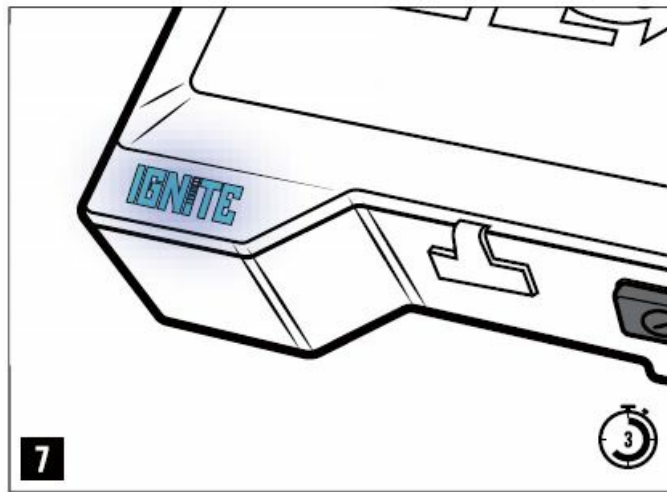
MANUAL MODE

- Power ON IGNITE battery pack. Press and hold  the button for 3 seconds. The LED indicator will be BLUE.
- Use the mobile app to select the desired mode of operation. Press the  (1 time to toggle through the Low, Medium, and High settings).
- Turn off IGNITE battery pack by pressing the  button for 5 seconds.



AUTO MODE

1. Press and hold the  button for 3 seconds. The LED indicator will be BLUE.
2. Press  2 times to enter AUTO MODE. The LEO will turn ORANGE and remain solid orange while in use. Or use the mobile app to select desired mode of operation.
3. To turn off IGNITE battery pack press and hold the  for 5 seconds.



LED ALERTS



CHARGING

- Flashing GREEN – charging in progress (0 to 99%)
- Solid GREEN = 100% charged

MODES

- **Solid BLUE** = MANUAL MODE (User Select) active
- **Solid ORANGE** = AUTO MODE (Sensor Select) active

BATTERY LIFE

-  8 hours in MANUAL MODE
-  4 hours in AUTO MODE
- Flashing RED 3 times – low power warning <20%
- If the battery is above 20% indicator light will flash GREEN 3 times every 15 minutes.
- The charging port is located on the battery pack.

LENS REPLACEMENT

For how to change out an ignite lens please go to: <https://lanite.ride509.com>.

IMPORTANT SAFETY INSTRUCTIONS

1. Read these instructions in their entirety.
2. Provide careful attention to all warnings.
3. follow all instructions.
4. Do not submerge in water.
5. Clean only with a dry cloth.
6. Do not store near any extreme heat sources.

WARNINGS/CAUTIONS:

- The battery may present the risk of electrical shock do not dispose of batteries in a fire, as they may explode. follow all local ordinances regarding the proper disposal of batteries.
- This 509 product is designed to aid comfort and provide some protection from wind, snow, and fogging while participating in certain outdoor alpine sports activities. This goggle is not intended for any other use.

REGULATORY INFORMATION:

NOTE:

This device complies with part 15 of the FCC rules. Operation is subject to the following two conditions: (1) This device may not cause harmful interference, and [2] this device must accept any interference received, including interference that may cause undesired operation.

C€509. here by declares that this product is in compliance with the essential requirements and other relevant provisions of Directive 2014/30/EU and all other EU directive requirements.

WARRANTY

Lifetime warranty on frame, strap, nose masks, outriggers, hinges, and trim pieces against manufacturer defects. 1-year warranty on the lens, foam, wiring, power pack, and charger against manufacturer's defects. Normal wear from typical use is not covered. For more information please visit <https://ride509.com/customer-service>.

RF EXPOSURE STATEMENT:

This equipment complies with the FCC and ISED radiation exposure limits set forth for an uncontrolled environment. This transmitter must not be co-located or operating in conjunction with any other antenna or transmitter.

FCC WARNING

This device complies with Part 15 of the FCC Rules. Operation is subject to the following two conditions:

1. This device may not cause harmful interference, and
2. This device must accept any interference received, including interference that may cause undesired operation.

Note:

This equipment has been tested and found to comply with the limits for a Class B digital device, pursuant to part 15 of the FCC Rules.

These limits are designed to provide reasonable protection against harmful interference in a residential installation. This equipment generates, uses, and can radiate radio frequency energy and, if not installed and used in accordance with the instructions, may cause harmful interference to radio communications. However, there is no guarantee that interference will not occur in a particular installation. If this equipment does cause harmful interference to radio or television reception, which can be determined by turning the equipment off and on, the user is encouraged to try to correct the interference by one or more of the following measures:

- Reorient or relocate the receiving antenna.
- Increase the separation between the equipment and the receiver.
- Connect the equipment to an outlet on a circuit different from that to which the receiver is connected.
- Consult the dealer or an experienced radio/TV technician for help.

NOTE:

Any changes or modifications to this unit not expressly approved by the party responsible for compliance could void the user's authority to operate the equipment.

IC WARNING:


This device contains license-exempt transmitters] that comply with Innovation, Science and Economic Development Canada's license-exempt RSSs]. Operation is subject to the following two conditions:

1. This device may not cause interference.
2. This device must accept any interference, including interference that may cause undesired operation of the device.

Contact Information

- **PHONE:** (877) 743-3509
- RIDE509.COM.

Documents / Resources

	509 Ignite S1 Flow Goggle [pdf] Instruction Manual Ignite S1 Flow Goggle, Ignite S1, Flow Goggle, Goggle
---	---