




403A CAT2BCD RS232/CI-V to BCD Decoder User Guide

[Home](#) » [403A](#) » 403A CAT2BCD RS232/CI-V to BCD Decoder User Guide 

Contents

- [1 403A CAT2BCD RS232/CI-V to BCD Decoder](#)
- [2 Product Information](#)
- [3 Hardware](#)
- [4 Software](#)
- [5 Product Usage Instructions](#)
- [6 Hardware](#)
- [7 Software](#)
- [8 Documents / Resources](#)
 - [8.1 References](#)
- [9 Related Posts](#)



403A CAT2BCD RS232/CI-V to BCD Decoder



Product Information

The CAT2BCD is a device that converts frequency data from a RS232 CAT or CI-V to a BCD output. The BCD

output can be used to control Antenna Genius or any other BCD compatible device. The device comes with a rear panel, BCD output pin layout, and front panel. It also requires software for configuration.

Hardware

- 1.1 Rear Panel: It is used to connect the device to other compatible devices like Antenna Genius or amplifiers, etc. The user should check the PIN layout on photo 1 before making any connections.
- 1.2 BCD OUT Pin Layout (connector 7, DB9 female): This is where the user can find the BCD output.
- 1.3 Front Panel: This is the user interface with LED indicators to show device status and a button to reset the device.

Software

Use the Windows application for configuring the device. Once the device is connected to a PC via USB, the user just needs to click connect. The device allows configuring the CAT/CI-V and verifying the radio band data input.

Product Usage Instructions

Follow the steps below to use the CAT2BCD device:

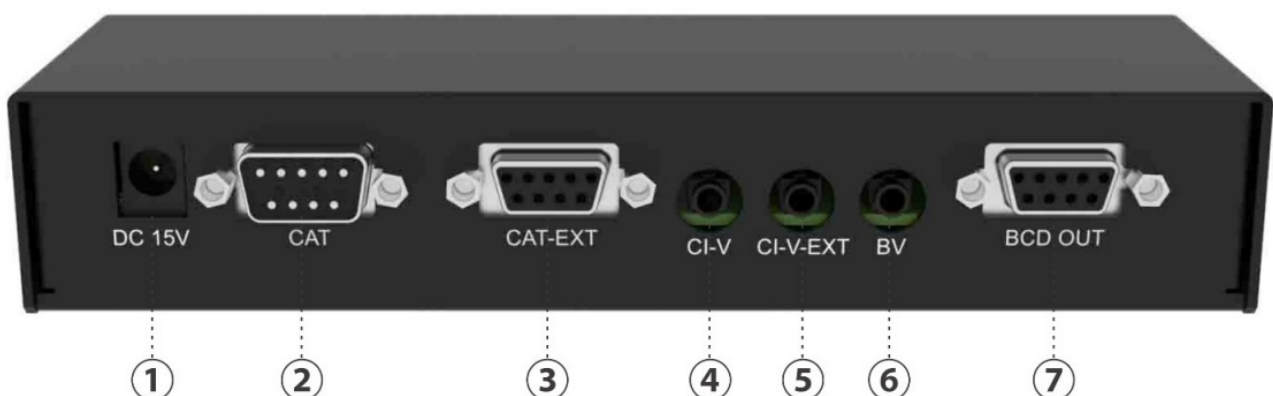
1. Connect the device to other compatible devices using the rear panel.
2. Connect the device to a PC via USB.
3. Download and install the Windows application from 4O3A.com downloads page:
<https://4o3a.com/support/downloads>
4. Open the Windows application and click "Connect".
5. Configure the CAT/CI-V using the software.
6. Verify the radio band data input.

Note: The CI-V address should be typed in decimal format, and the hexadecimal value can be seen on the right of the input box. Also, the user can reset the device using the button on the front panel.

This interface converts frequency data from a RS232 CAT or CI-V to a BCD output. The BCD output can be used to control Antenna Genius or any other BCD compatible device.

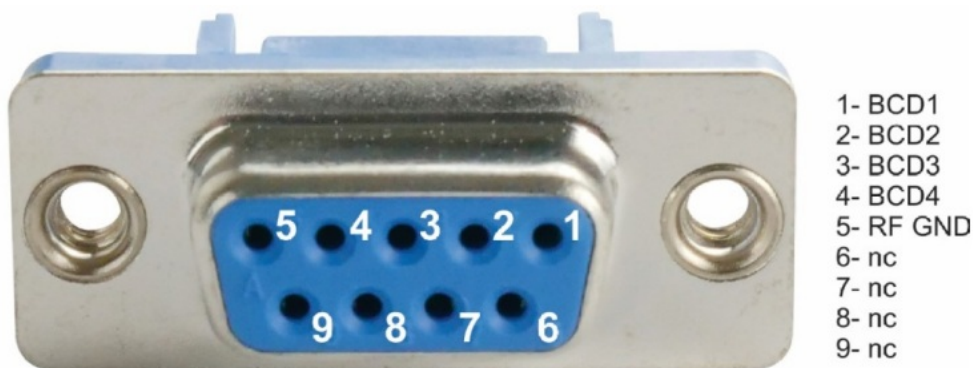
Hardware

]The Rear Panel

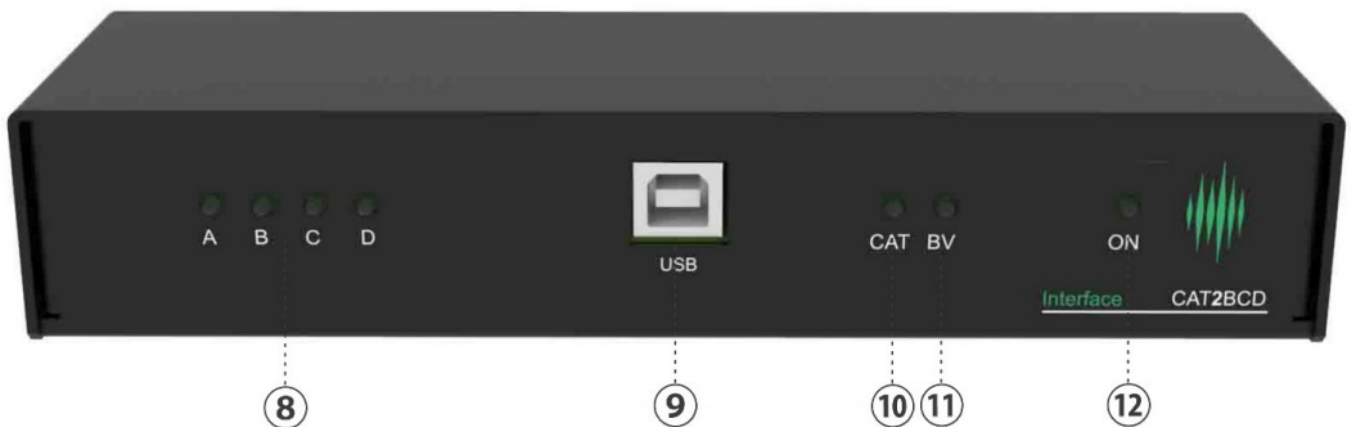


1. **DC connector** – to the external power supply, 15V DC/500mA
2. **RS232 input connector** – DB9 male, used to connect to your transceivers CAT output
3. **RS232 output connector** – DB9 female, used to connect any other device which need RS232 CAT data, like USB interface, amplifier etc
4. **CI-V input connector** – 3.5mm stereo, used to connect your ICOM transceivers CI-V output
5. **CI-V output connector** – 3.5mm stereo, used to connect any other device which need CI-V data, like USB interface, amplifier etc
6. **Icom voltage control band input connector** – 2.5mm mono, used to connect your older ICOM transceivers band data output
7. **BCD output connector** – DB9 female, used to control peripherals with BCD data, like Antena Genius, amplifiers etc (check PIN layout on photo 1)

The BCD OUT Pin Layout (connector 7, DB9 female):



The Front Panel:



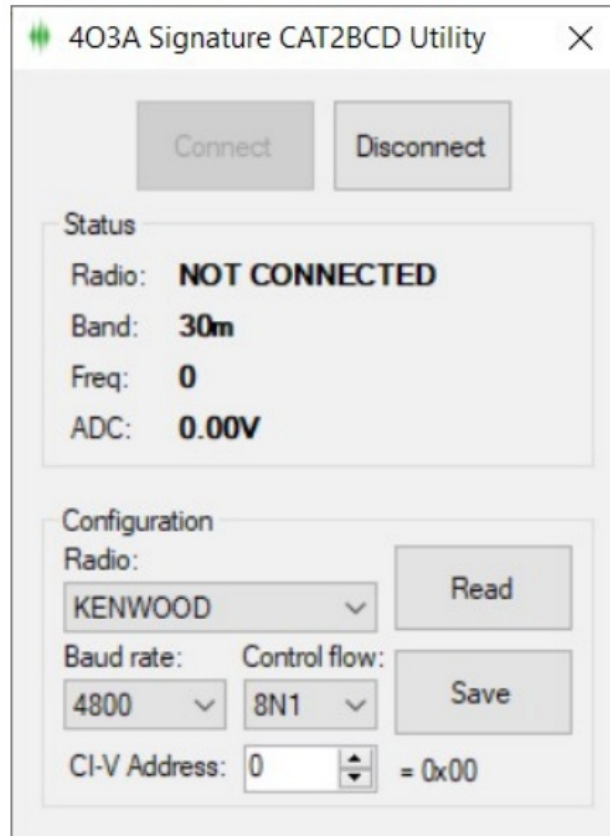
- 8. Four BDC LEDs, showing you the current BCD output status
- 9. **USB connector** – for communication with PC
- 10. **CAT LED** – status of CAT
- 11. **BV LED** – Showing status of BV Band data
- 12. **ON LED** – showing power supply status

Software


- Use the Winows Applicaton for configuring the device.
- Once you connect the device to your PC via USB all you need to do is click connect.
- The device allows you to configure the CAT/CI-V as well as verify the radio band data input.
- You can find the latest version on the 4O3A.com downloads page: <https://4o3a.com/support/downloads>

Important note:

The CI-V address is typed in decimal format, you can see the hexadecimal value on the right of the input box.



Documents / Resources

	<p>4O3A CAT2BCD RS232/CI-V to BCD Decoder [pdf] User Guide CAT2BCD, RS232 CI-V to BCD Decoder, CAT2BCD RS232 CI-V to BCD Decoder, BCD Decoder, Decoder</p>
---	--

References

- [4O3A Signature - Home](#)
- [4O3A Signature | Software, Firmware and Manuals](#)