




403A CAT2BCD RS232-CI-V to BCD Decoder Instructions

[Home](#) » [403A](#) » 403A CAT2BCD RS232-CI-V to BCD Decoder Instructions 

Contents

- [1 403A CAT2BCD RS232-CI-V to BCD Decoder](#)
- [2 Product Information](#)
- [3 Hardware](#)
- [4 Software](#)
- [5 Documents / Resources](#)
 - [5.1 References](#)
- [6 Related Posts](#)



403A CAT2BCD RS232-CI-V to BCD Decoder



Product Information

- **Product Name:** CAT2BCD
- **Description:** RS232/CI-V to BCD decoder
- **Revision:** 1

- **Date:** 25-Jan-23
- **Function:** This interface converts frequency data from a RS232 CAT or CI-V to a BCD output. The BCD output can be used to control Antenna Genius or any other BCD compatible device.

Hardware

1. The Rear Panel

Connect the CAT2BCD interface to Genius, amplifiers, etc. Refer to photo 1 for PIN layout.

2. The BCD OUT Pin Layout (connector 7, DB9 female):

3. The Front Panel:

Software

Use the Windows Application to configure the device. Follow these steps:

1. Connect the CAT2BCD interface to your PC via USB.
2. Open the Windows Application.
3. Click on the "Connect" button.
4. Configure the CAT/CI-V settings according to your requirements.
5. Verify the radio band data input.

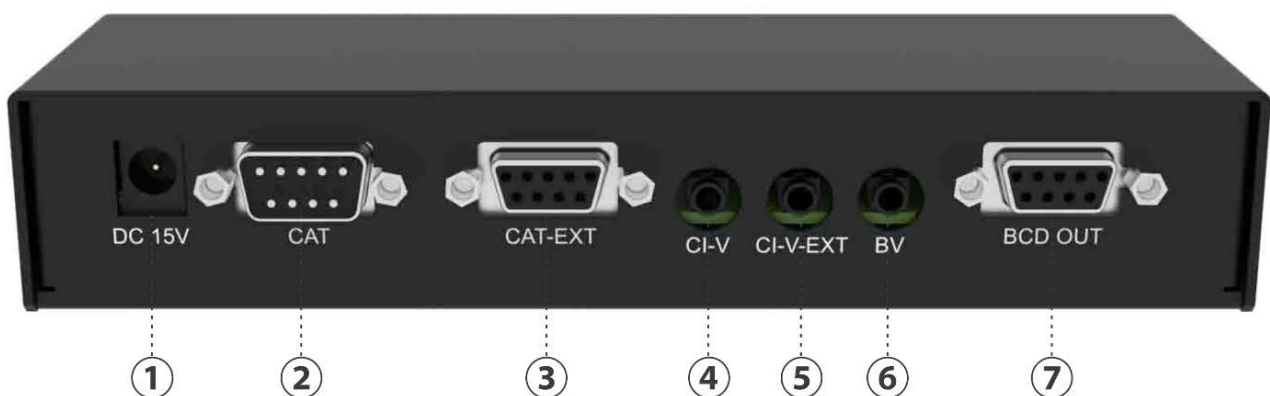
You can download the latest version of the Windows Application from the 4O3A.com downloads page:

<https://4o3a.com/support/downloads>

This interface converts frequency data from a RS232 CAT or CI-V to a BCD output. The BCD output can be used to control Antenna Genius or any other BCD compatible device.

Hardware

The Rear Panel



1. DC connector – to the external power supply, 15V DC/500mA
2. RS232 input connector – DB9 male, used to connect to your transceivers CAT output
3. RS232 output connector – DB9 female, used to connect any other device which need RS232 CAT data, like USB interface, amplifier etc
4. CI-V input connector – 3.5mm stereo, used to connect your ICOM transceivers CI-V output
5. CI-V output connector – 3.5mm stereo, used to connect any other device which need CI-V data, like USB

interface, amplifier etc

6. Icon voltage control band input connector – 2.5mm mono, used to connect your older ICOM transceivers band data output
7. BCD output connector – DB9 female, used to control perishes with BCD data, like Antenna Genius, amplifiers etc (check PIN layout on photo 1)

The BCD OUT Pin Layout (connector 7, DB9 female):



- 1- BCD1
- 2- BCD2
- 3- BCD3
- 4- BCD4
- 5- RF GND
- 6- nc
- 7- nc
- 8- nc
- 9- nc

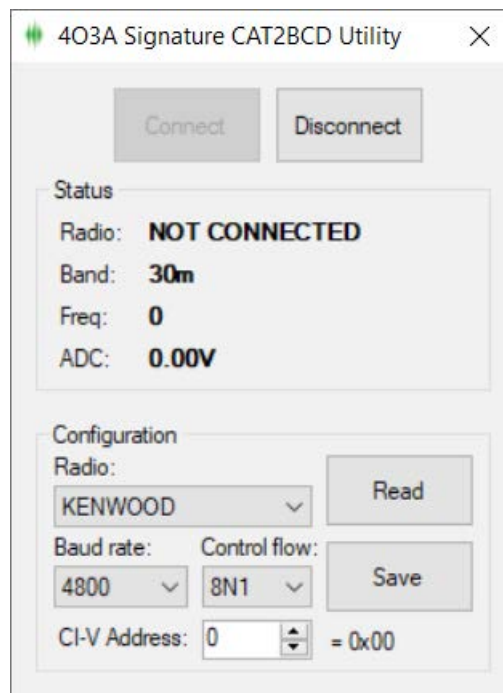
The Front Panel:



8. Four BDC LEDs, showing you the current BCD output status
9. USB connector – for communication with PC
10. CAT LED – status of CAT
11. BV LED – Showing status of BV Band data
12. ON LED – showing power supply status


Software

- Use the Windows Application for configuring the device.
- Once you connect the device to your PC via USB all you need to do is click connect.
- The device allows you to configure the CAT/CI-V as well as verify the radio band data input.
- You can find the latest version on the 4O3A.com downloads page: <https://4o3a.com/support/downloads>



Revision 1, 25-Jan-23

Documents / Resources

	<p>4O3A CAT2BCD RS232-CI-V to BCD Decoder [pdf] Instructions CAT2BCD RS232-CI-V to BCD Decoder, CAT2BCD, RS232-CI-V to BCD Decoder, BCD Decoder, Decoder</p>
--	--

References

- [4O3A Signature - Home](#)
- [4O3A Signature | Software, Firmware and Manuals](#)

[Manuals+](#).