



403A B2BCD Decoder Windows Application User Guide













[Home](#) » [403A](#) » 403A B2BCD Decoder Windows Application User Guide 

403A B2BCD Decoder Windows Application User Guide

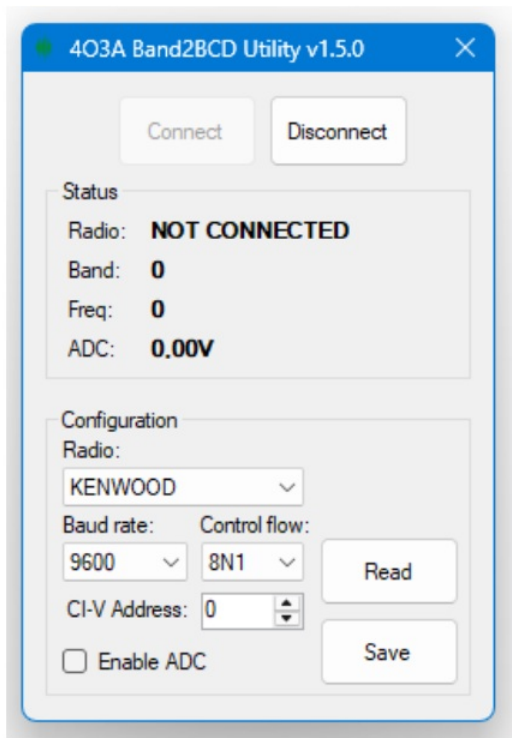
B2BCD Firmware Update Guide Firmware version 1.5.0.

Download the latest B2BCD utility found on the website, under Other Devices – B2BCD:
<https://4o3a.com/support/downloads>

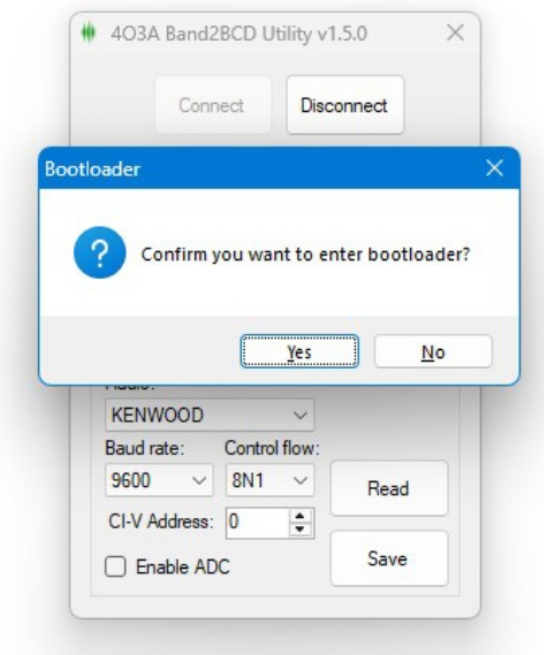
Other Devices

-  1A2R
-  8xAB Switch
-  8x2 Switch
-  B2BCD - Band to BCD Decoder
 -  Band to BCD Decoder Windows Application v1.5.0
 -  Band to BCD Decoder Quick Start Guide
-  NC-1 Headset
-  6x2 Switch (obsolete)
-  Lock X (obsolete)
-  RX Master (obsolete)
-  SAC X (obsolete)
-  Interface Genius (obsolete)

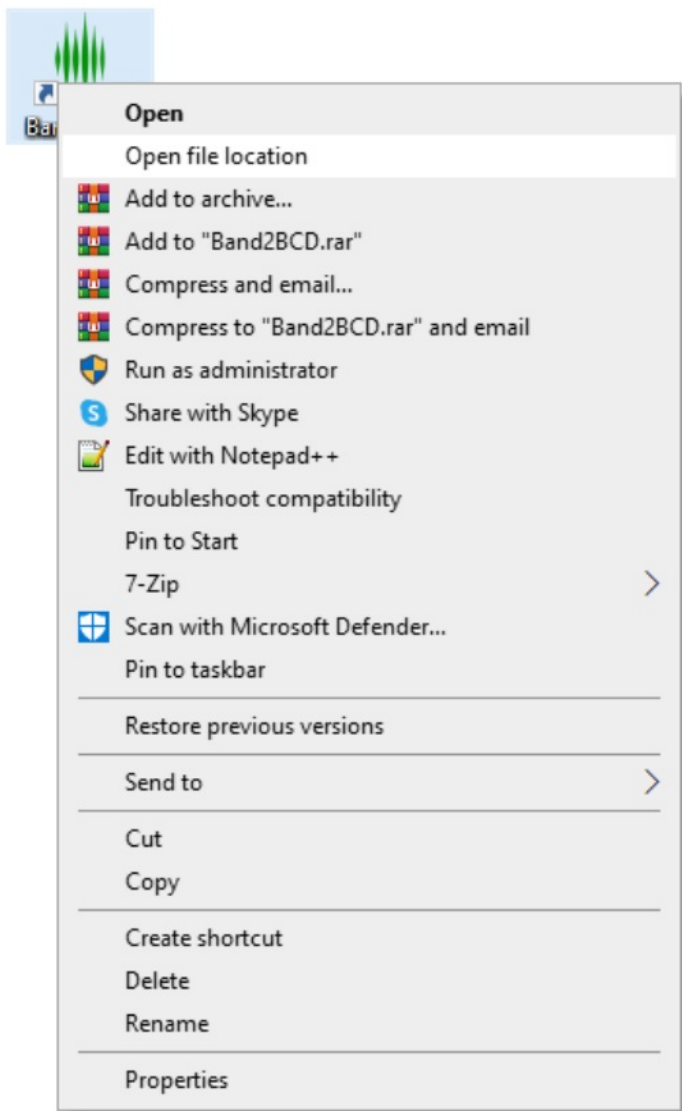
Install the application, connect your B2BCD to your PC via USB and connect using the B2BCD Utility.



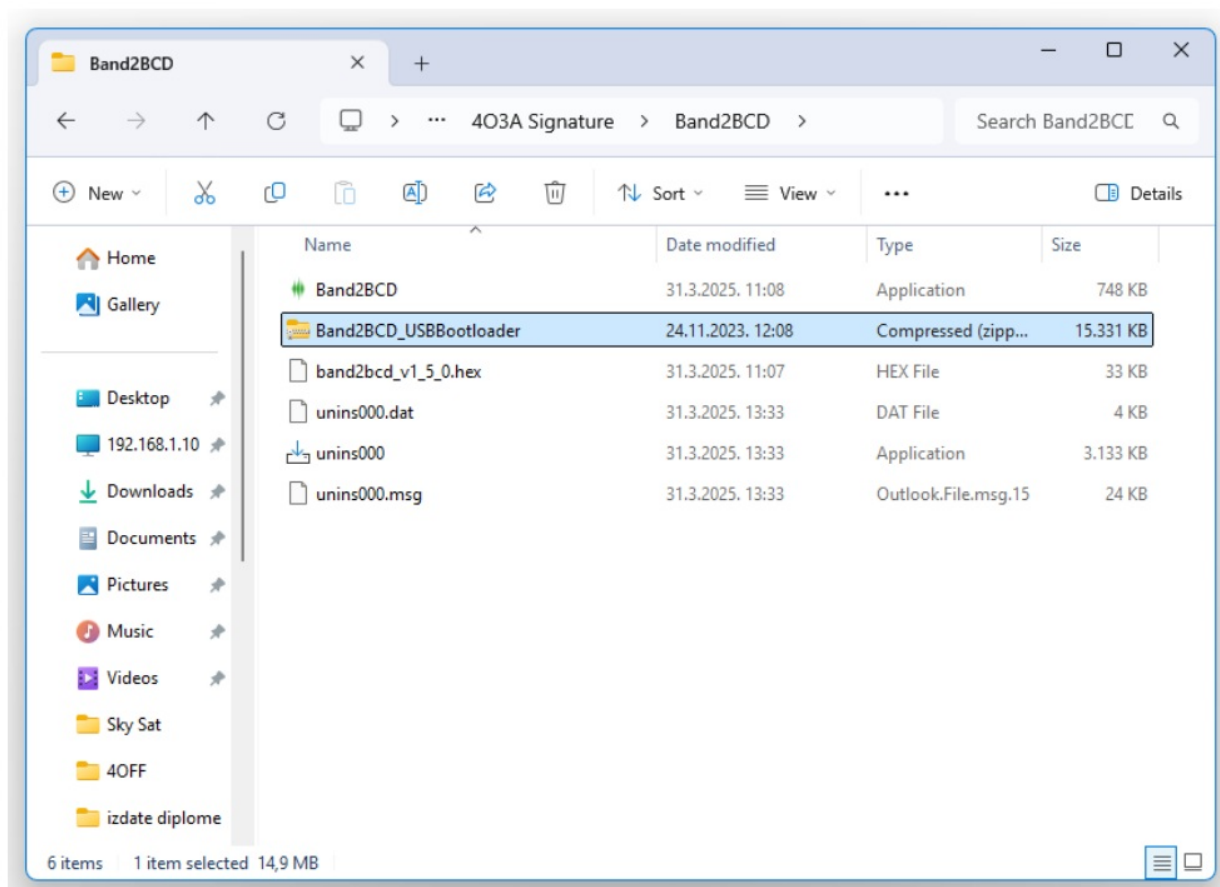
In order to upgrade the firmware on the device you need to enter the bootloader mode. While focusing the utility, hold **Ctrl + Alt + B**. Confirm entering the bootloader mode.



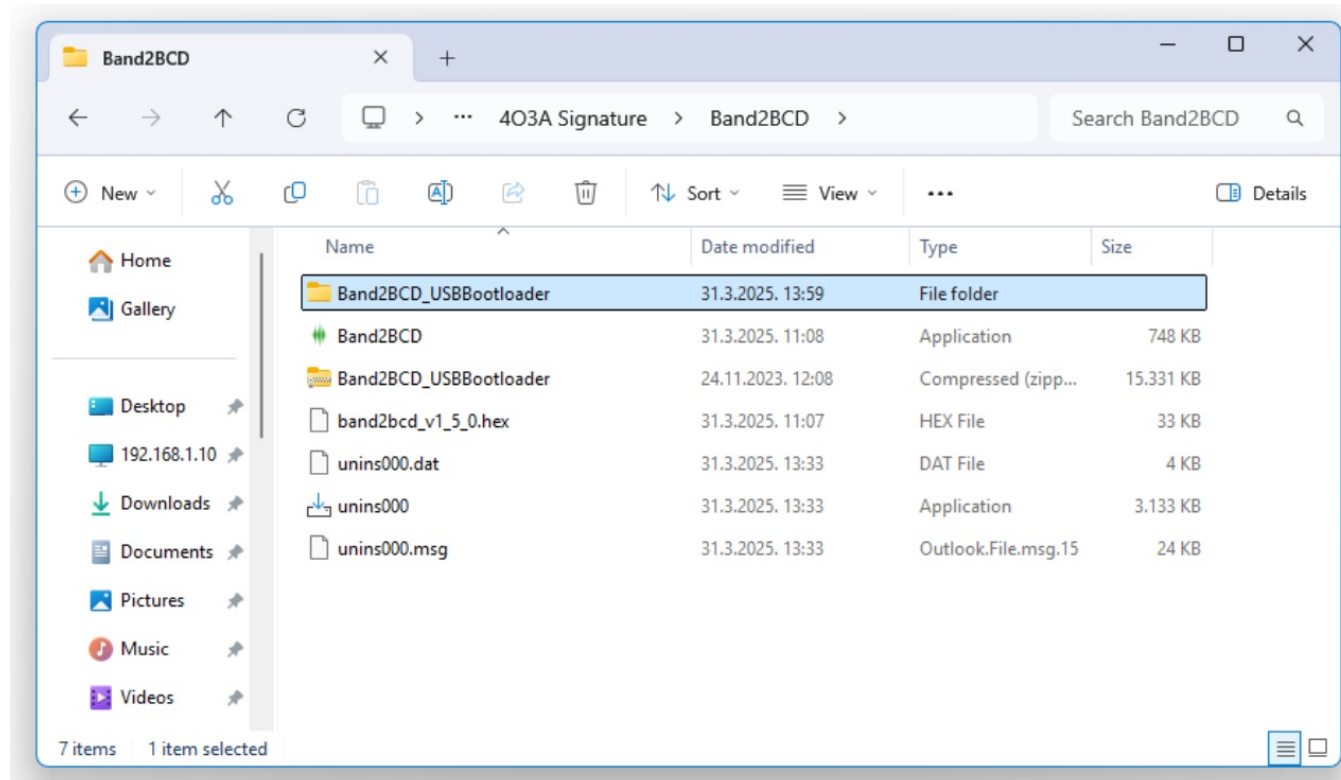
Right click on your Band2BCD icon and select **Open File Location**.



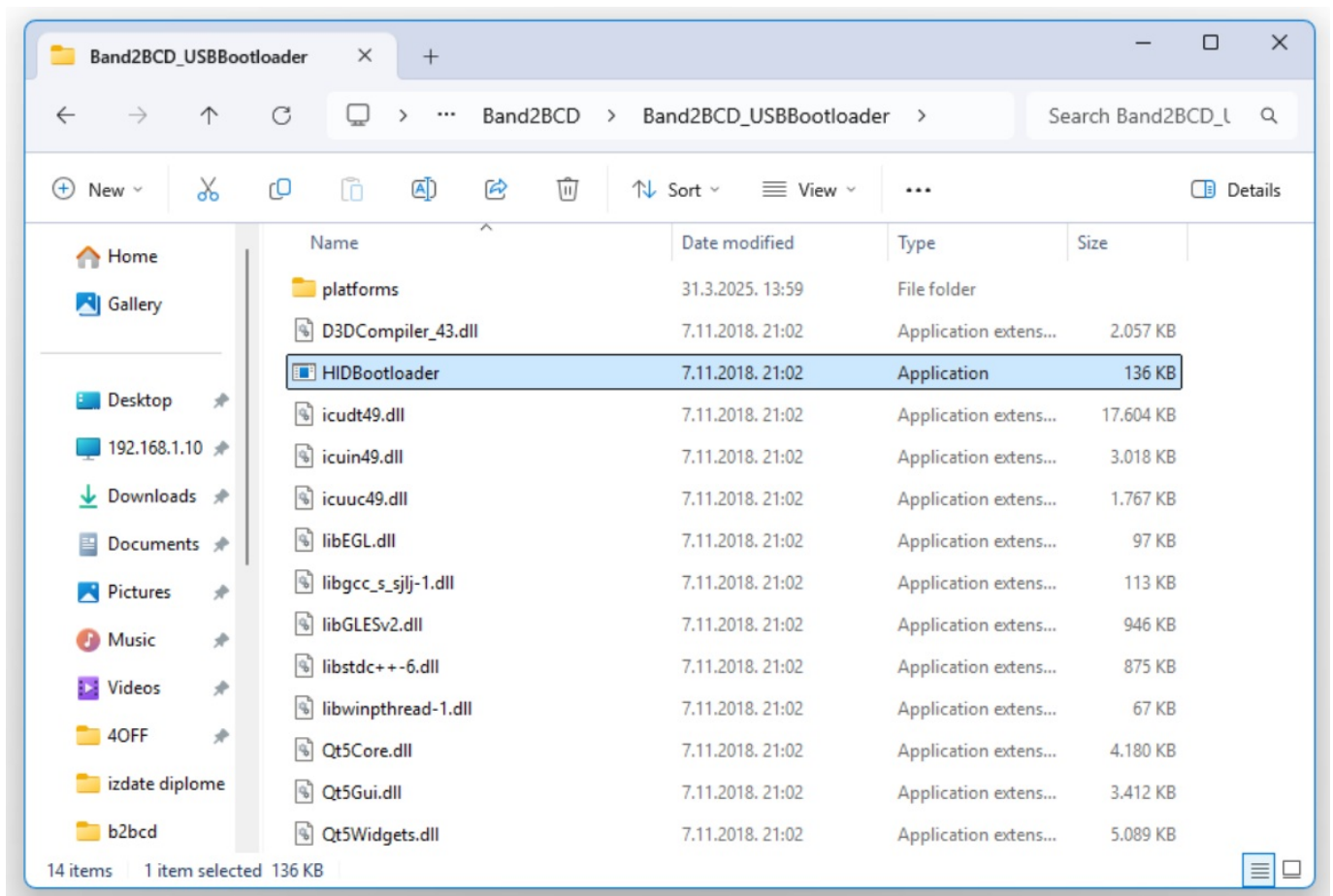
In the same folder where the B2BCD Utility is installed you will find **Band2BCD_USBBootloader.zip**



Extract this zip and and it will create a new folder. run the **HIDBootloader.exe**

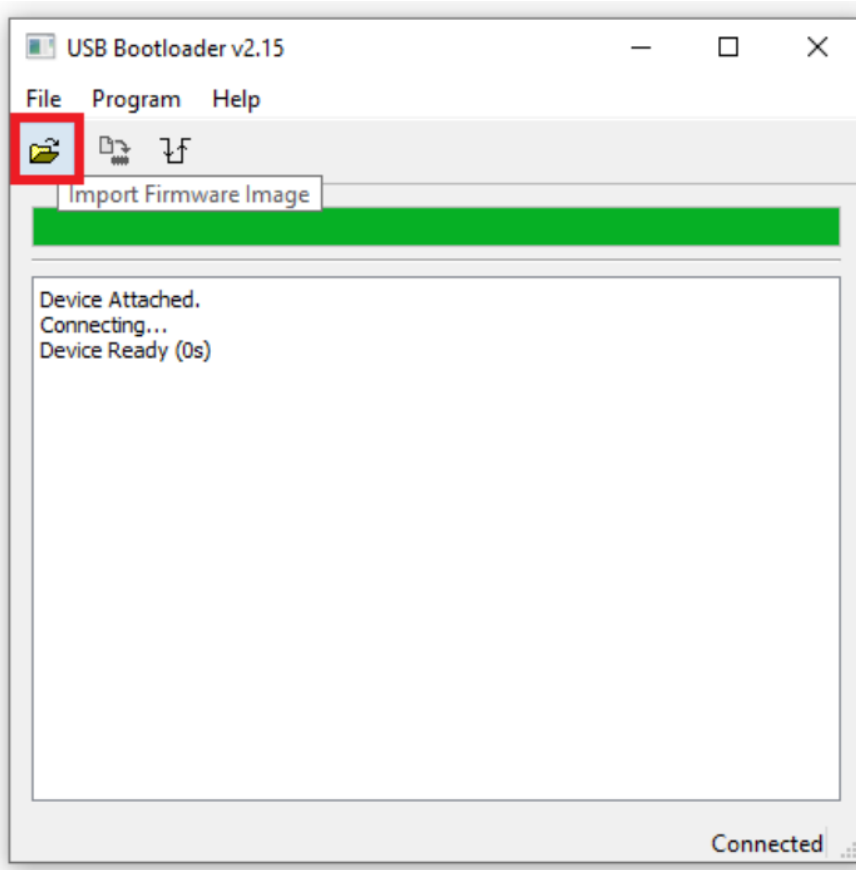


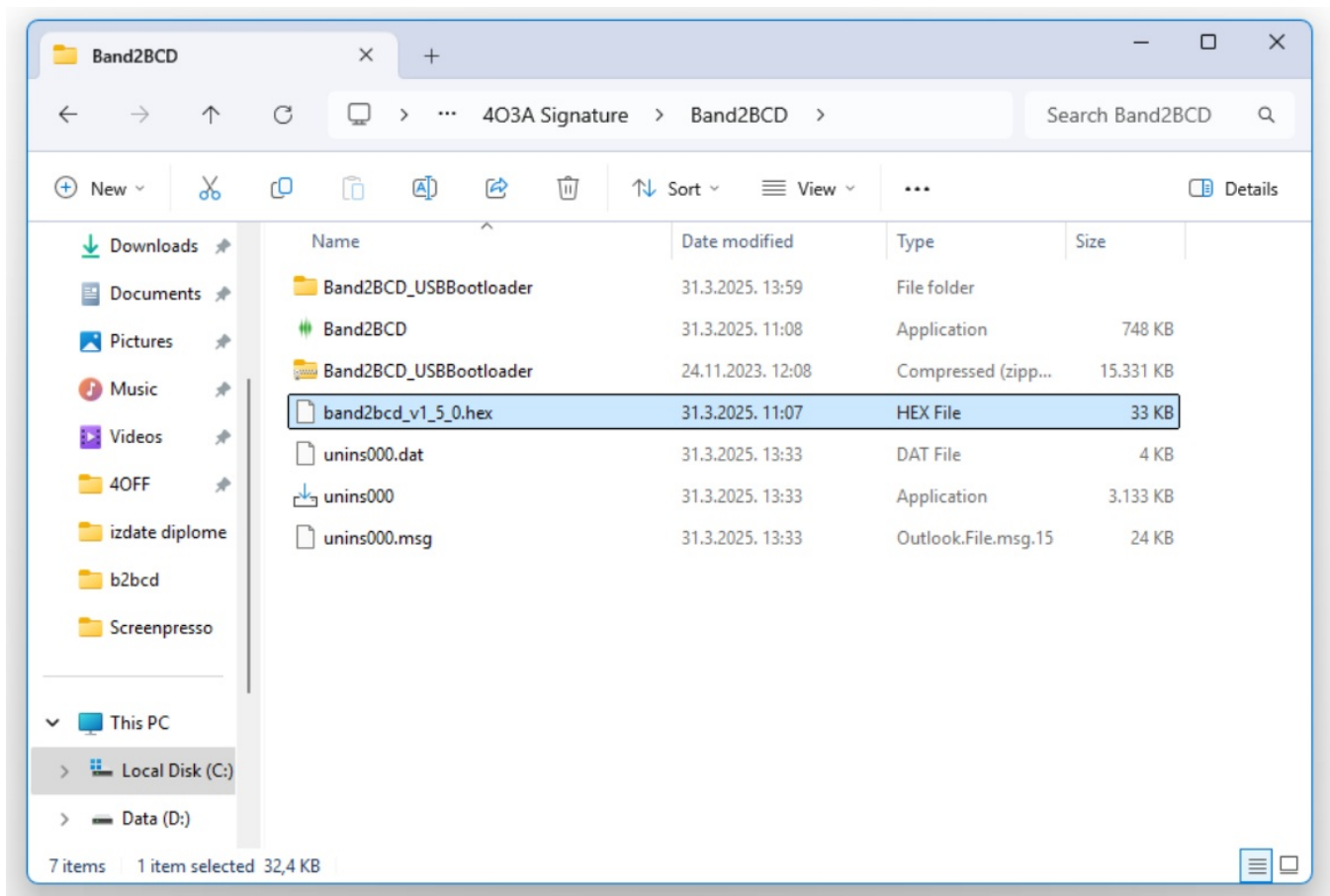
Run the **HIDBootloader.exe**



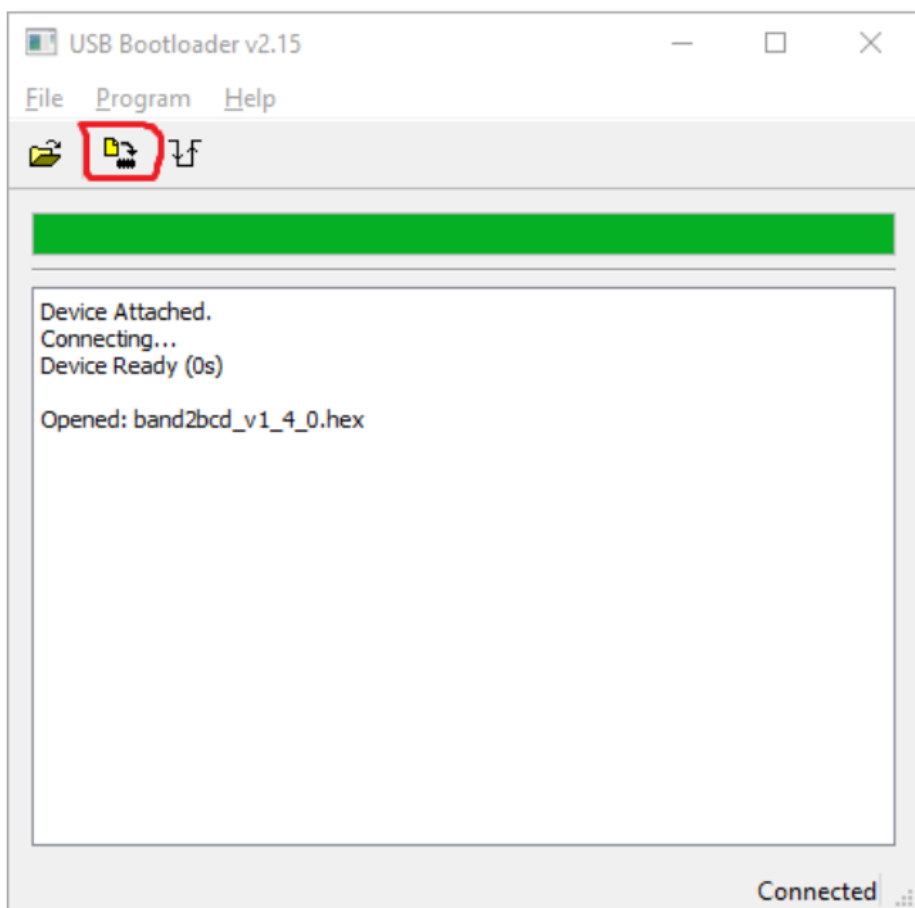
Click on the **Open Firmware Image** button and load the new firmware image. The version of the firmware must match your app version, in this case **band2bcd_v1_5_0.hex**

The default file path is **C:\Program Files (x86)\403A Signature\Band2BCD**



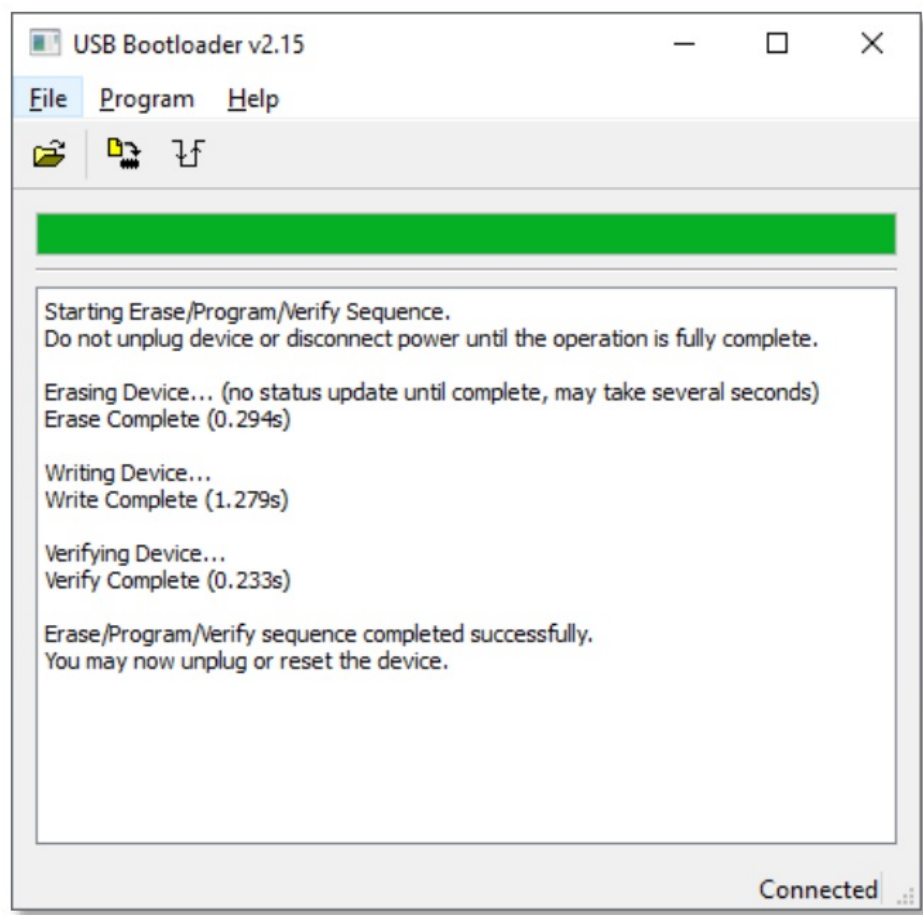


Click the **Erase/Program/Verify** Device and wait for the process to end.



After installing the new firmware, **power cycle the device by unplugging and plugging in the power**

connector.




Contents

[1 Documents / Resources](#)

[1.1 References](#)

Documents / Resources

	403A B2BCD Decoder Windows Application [pdf] User Guide B2BCD Decoder Windows Application, Decoder Windows Application, Windows Application
-------------------------------------------------------------------------------------	----------------------------------------------------------------------------------------------------------------------------------------------------------------

References

- [User Manual](#)