



# 403A Signature CAT2BCD Bcd Decoder Instruction Manual

[Home](#) » [403A Signature](#) » 403A Signature CAT2BCD Bcd Decoder Instruction Manual 

### Contents

- 1 403A Signature CAT2BCD Bcd Decoder
- 2 Product Usage Instructions
- 3 B2BCD Firmware Update Guide
- 4 Documents / Resources
  - 4.1 References
- 5 Related Posts

## 403A Signature

### 403A Signature CAT2BCD Bcd Decoder



### Specifications:

- Product Name: B2BCD Firmware Update Guide
- Compatibility: Works with B2BCD devices
- Version: 1.4.0

### Product Usage Instructions

## Step 1: Connect and Prepare

1. Install the application provided with the B2BCD device on your PC.
2. Connect your B2BCD to your PC via USB.
3. Launch the B2BCD Utility application.

## Step 2: Enter Bootloader Mode

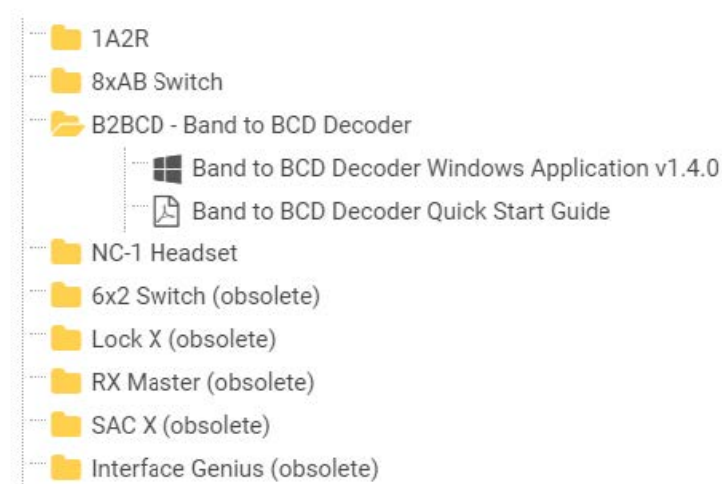
1. While focusing on the utility, press and hold Ctrl + Alt + B to enter the bootloader mode.
2. Confirm entering the bootloader mode.
3. Right-click on your CAT2BCD icon within the utility and select "Open File Location".
4. Locate the CAT2BCD\_USBBootloader.zip file in the folder where the B2BCD Utility is installed.
5. Extract the zip file and run HIDBootloader.ex

## B2BCD Firmware Update Guide

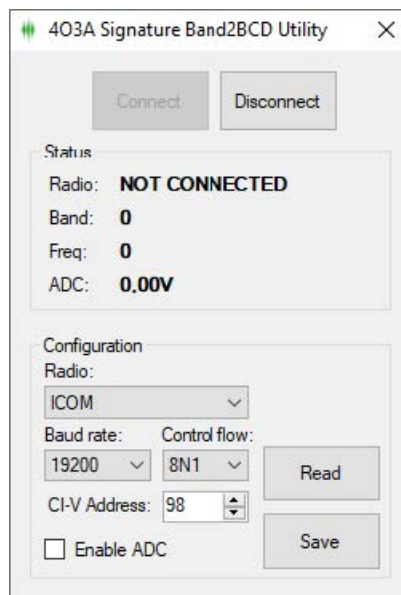
- Download the latest B2BCD utility found on the website, under Other Devices – B2BCD:

<https://4o3a.com/support/downloads>

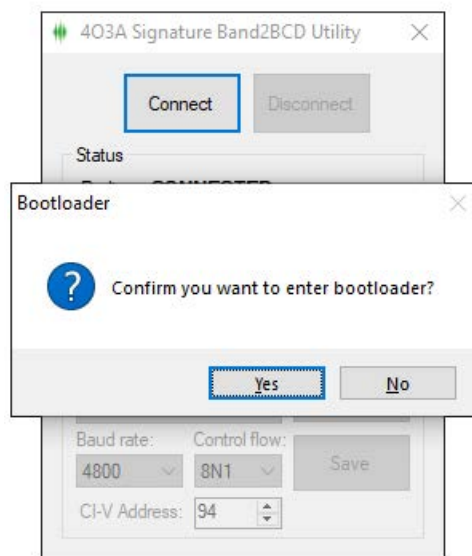
### Other Devices



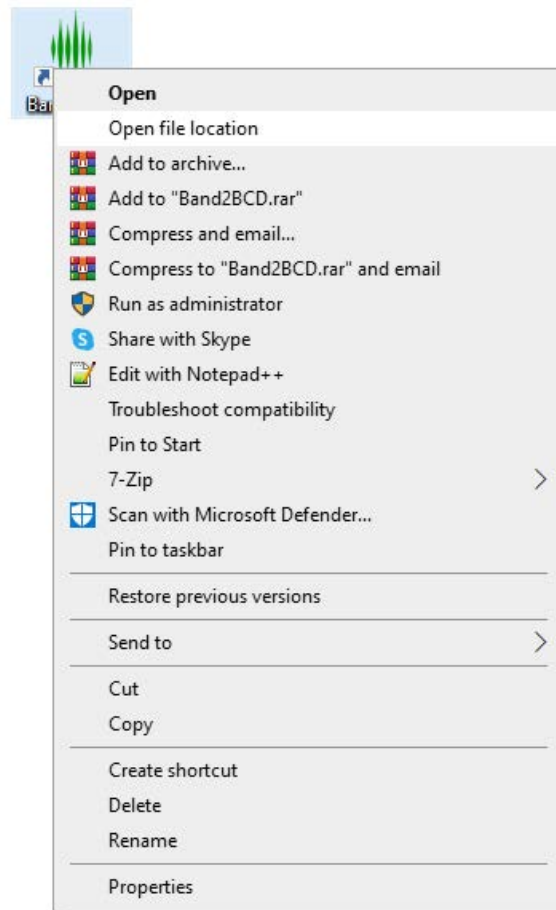
- Install the application, connect your B2BCD to your PC via USB and connect using the B2BCD Utility.



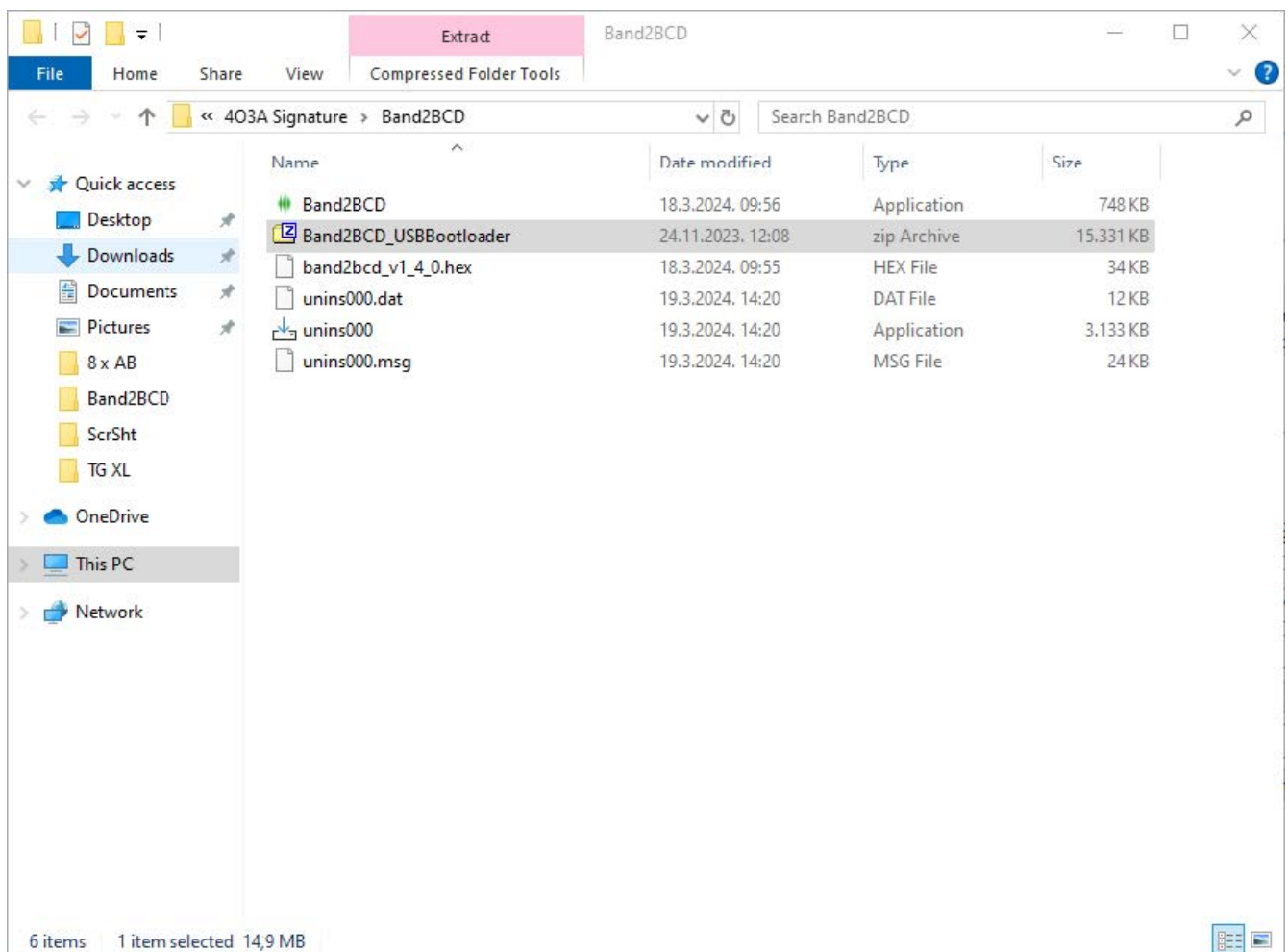
- In order to upgrade the firmware on the device you need to enter the bootloader mode. While focusing the utility, hold Ctrl + Alt + B. Confirm entering the bootloader mode.



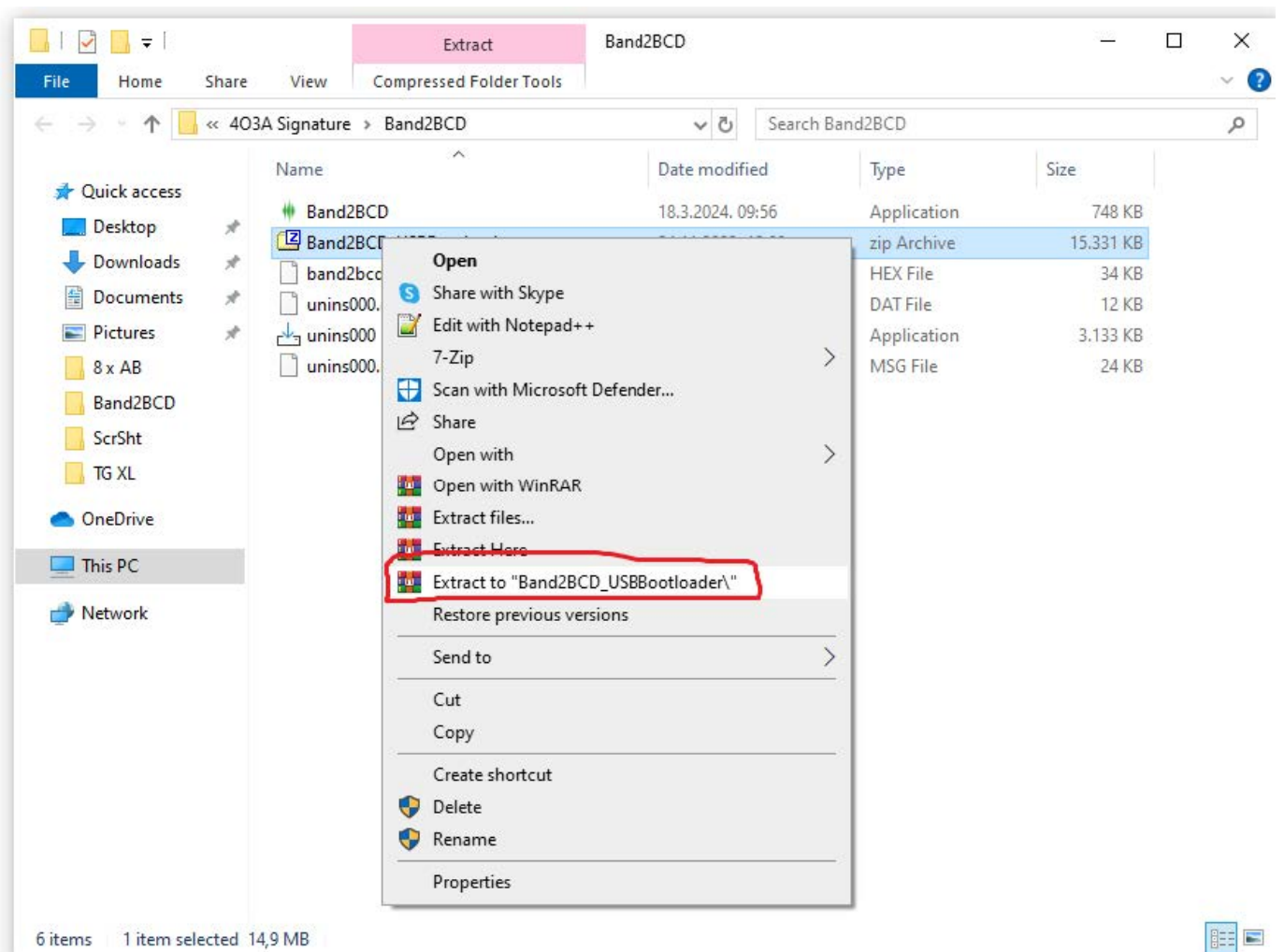
- Right click on your CAT2BCD icon and select Open File Location.



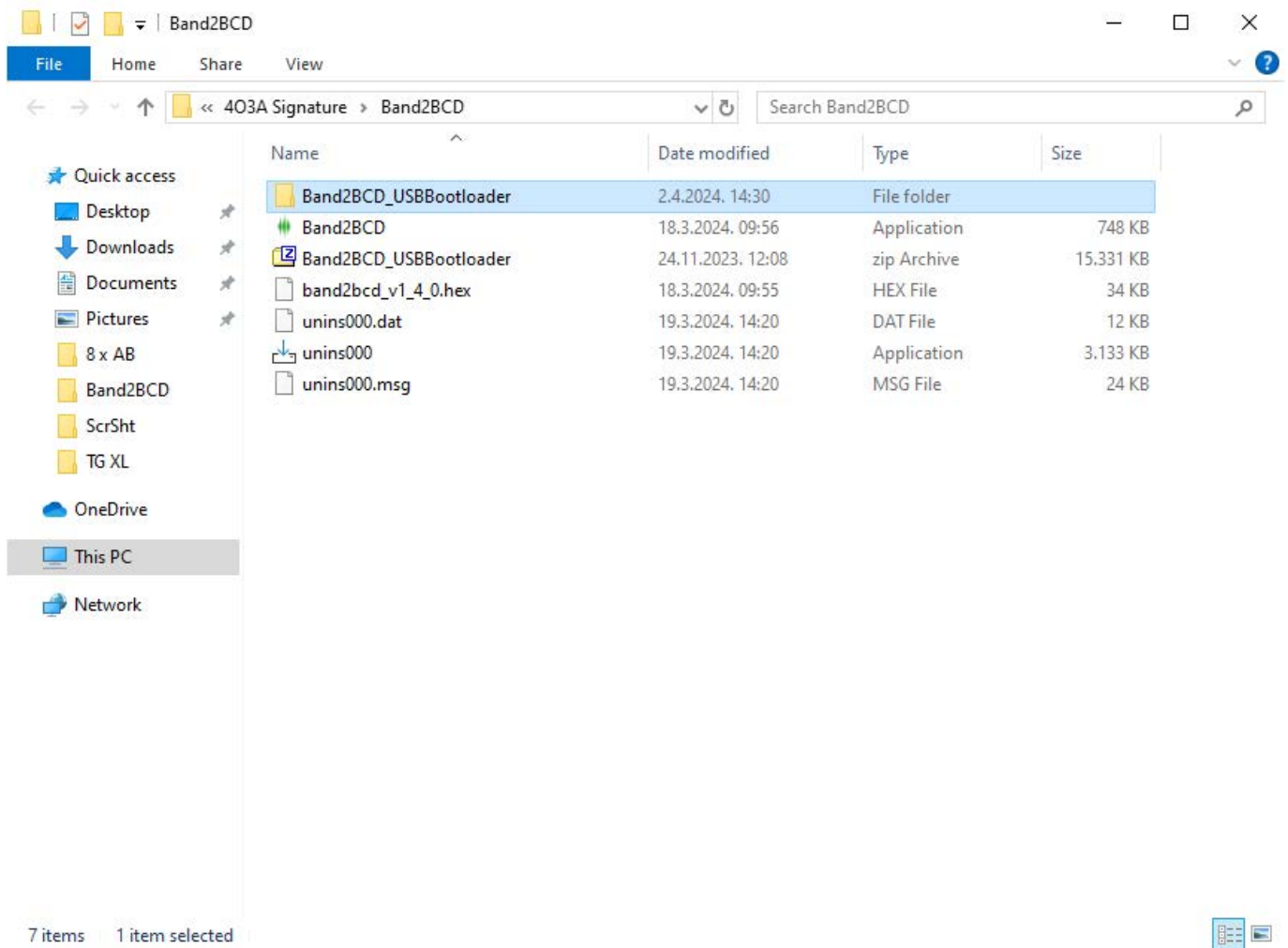
- In the same folder where the B2BCD Utility is installed you will find CAT2BCD\_USBBootloader.zip



- Extract this zip and run the HIDBootloader.exe



**This will create a new folder**

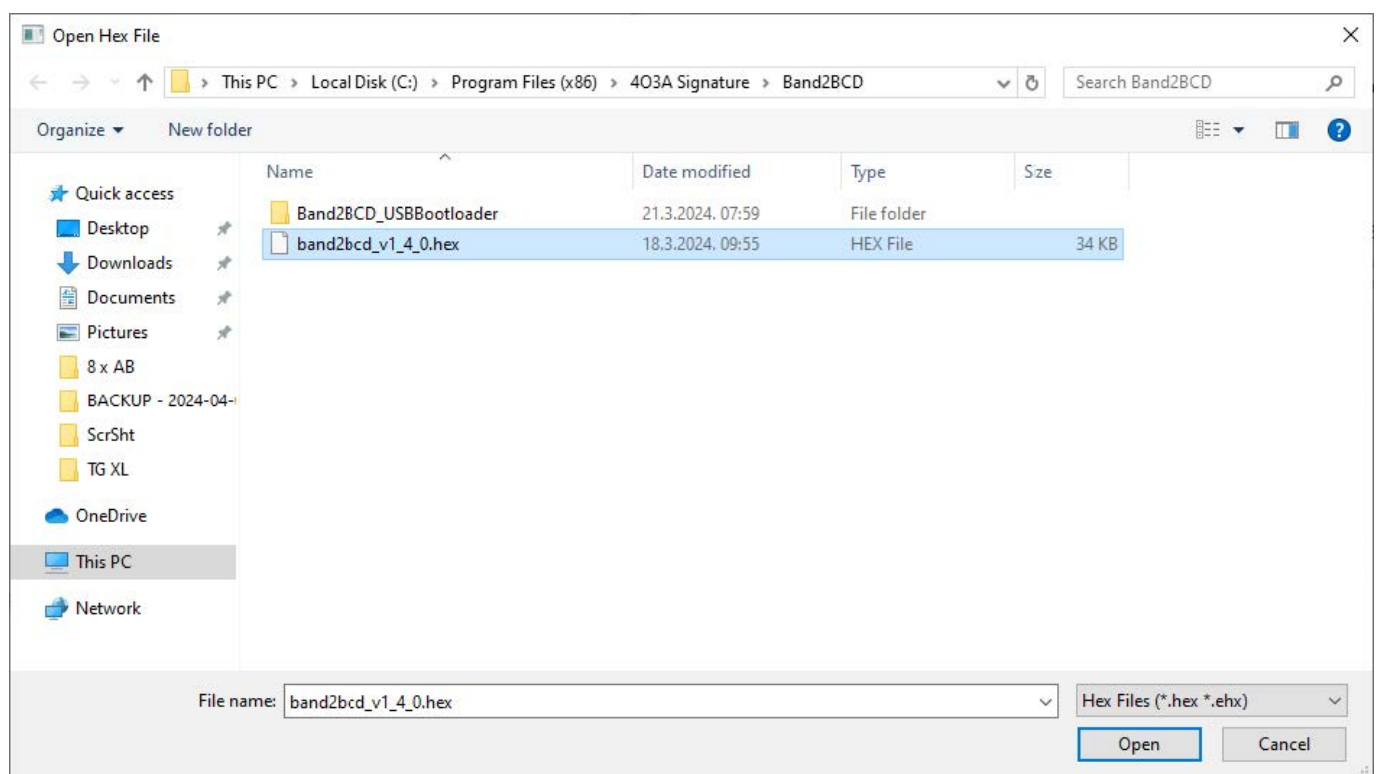
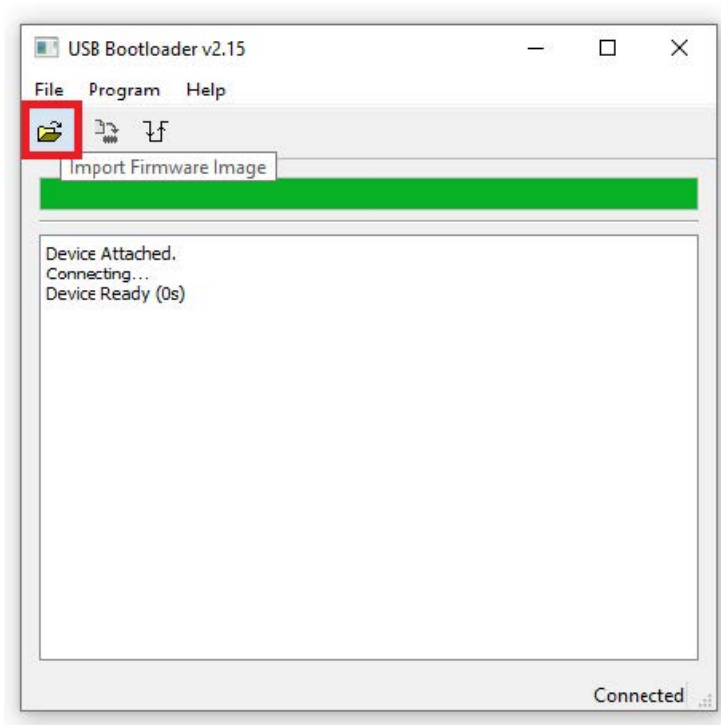


## Run HIDBootloader.exe

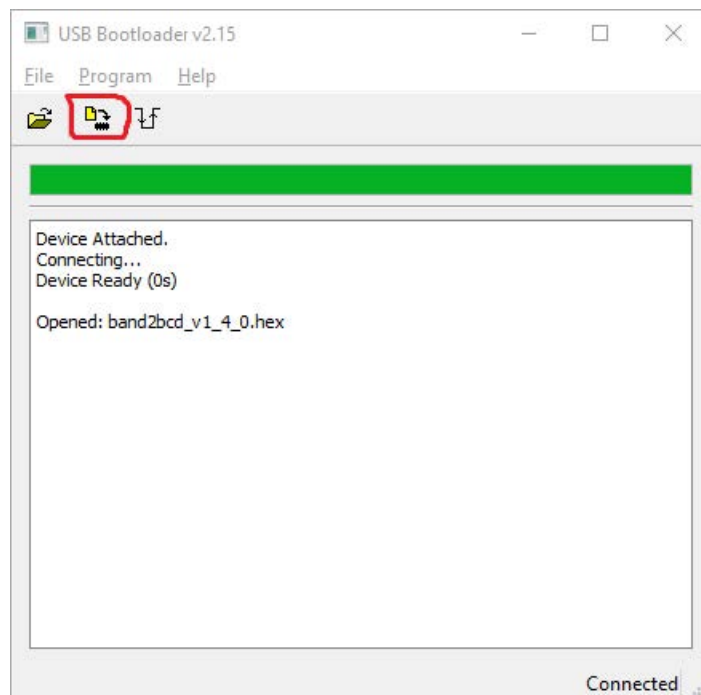
gram Files (x86) > 403A Signature > Band2BCD > Band2BCD_USBBootloader				
Name	Date modified	Type	Size	
platforms	8.4.2021, 11:24	File folder		
D3DCompiler_43.dll	7.11.2018, 21:02	Application exten...	2.057 KB	
HIDBootloader	7.11.2018, 21:02	Application	136 KB	
icudt49.dll	7.11.2018, 21:02	Application exten...	17.604 KB	
icuin49.dll	7.11.2018, 21:02	Application exten...	3.018 KB	
icuuc49.dll	7.11.2018, 21:02	Application exten...	1.767 KB	
libEGL.dll	7.11.2018, 21:02	Application exten...	97 KB	
libgcc_s_sjlj-1.dll	7.11.2018, 21:02	Application exten...	113 KB	
libGLSv2.dll	7.11.2018, 21:02	Application exten...	946 KB	
libstdc++-6.dll	7.11.2018, 21:02	Application exten...	875 KB	
libwinpthread-1.dll	7.11.2018, 21:02	Application exten...	67 KB	
Qt5Core.dll	7.11.2018, 21:02	Application exten...	4.180 KB	
Qt5Gui.dll	7.11.2018, 21:02	Application exten...	3.412 KB	
Qt5Widgets.dll	7.11.2018, 21:02	Application exten...	5.089 KB	

Click on the Open Firmware Image button and load the new firmware image. The version of the firmware must match your app version, in this case cat2bcd\_v1\_4\_0.hex

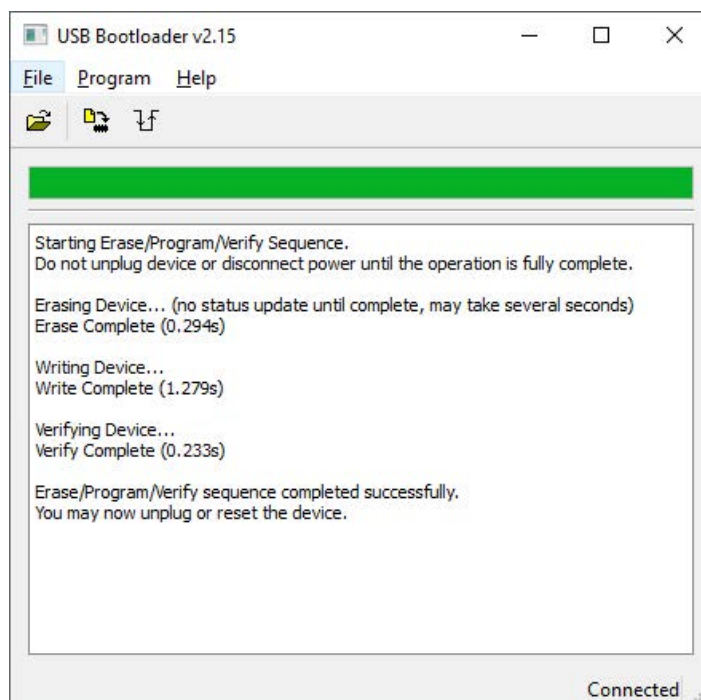
The default file path is C:\Program Files (x86)\403A Signature\Band2BCD




Click the Erase/Program/Verify Device and wait for the process to end.



After installing the new firmware, power cycle the device by unplugging and plugging in the power connector.



## Documents / Resources

	<p><a href="#">403A Signature CAT2BCD Bcd Decoder</a> [pdf] Instruction Manual CAT2BCD Bcd Decoder, CAT2BCD, Bcd Decoder, Decoder</p>
-------------------------------------------------------------------------------------	-------------------------------------------------------------------------------------------------------------------------------------------



## References

- [User Manual](#)

[Manuals+](#), [Privacy Policy](#)

This website is an independent publication and is neither affiliated with nor endorsed by any of the trademark owners. The "Bluetooth®" word mark and logos are registered trademarks owned by Bluetooth SIG, Inc. The "Wi-Fi®" word mark and logos are registered trademarks owned by the Wi-Fi Alliance. Any use of these marks on this website does not imply any affiliation with or endorsement.