



4lite 4L2-102 Floodlight Range Instructions

[Home](#) » [4lite](#) » 4lite 4L2-102 Floodlight Range Instructions 

4lite 4L2-102 Floodlight Range Instructions

Installation Instructions



Contents

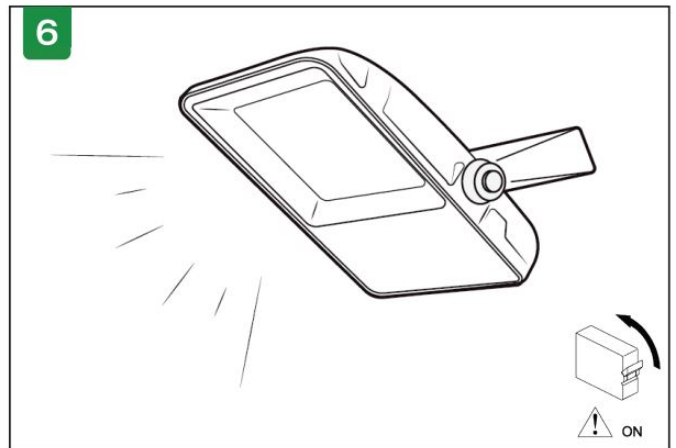
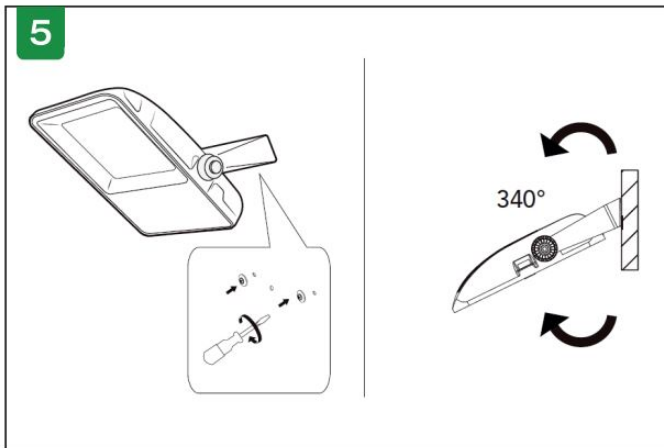
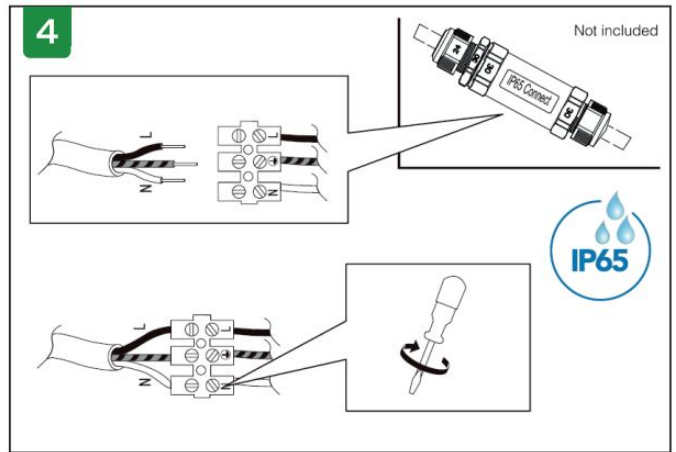
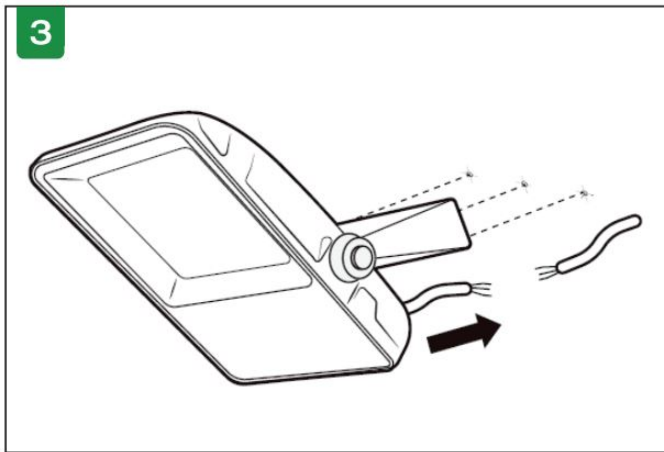
- [1 Warranty Information](#)
- [2 PIR Settings](#)
- [3 Documents / Resources](#)
- [4 Related Posts](#)

Warranty Information

For warranty details please contact your local representative or visit our website: www.anselluk.com

It is highly recommended that all Ansell luminaires are installed / maintained by a fully qualified electrician and wired in accordance to the latest IEC standards or national equivalent.

Mains power must be switched off during any installation or maintenance.



PIR Settings

94.7mm

34.6mm

69.1mm

5mm

5mm

SPECIFICATION:

Power Source: 220 -240V/AC

Power Frequency: 50Hz

Ambient Light: 3-2000LUX (adjustable)

Time-Delay: min: 10sec±3sec
max: 7min±3min

Detection Range: 120°

Working Temperature: -25~+40℃

Working Humidity: <93%RH

Detection Distance: Max.8m (<24℃)

Rated Load: 100W.Max (led lamp)

IP Rate: IP65

TIME

SENS

LUX

- Approx. 8m Max
 - 10 seconds to 7min
 - 3 Lux - 2000Lux

Off/On X 2 = On ➡
 Reset - Off 10 - 20 Sec

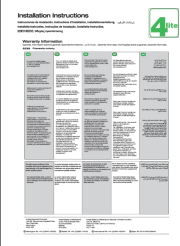
Ansell Electrical Products
Unit 6B, Stonecross Industrial Park, Yew Tree Way, Wanington, WA33JD
Warrington Tel: +44 (0)1942 433333

Ansell (Sales & Distribution)
Unit 2, M2 Business Park,
Duncrue Street, Belfast, BT39AQ
Belfast Tel: +44 (0)2890 773750

Ansell (Sales & Distribution) Republic of Ireland Limited
Unit G1, Block G,
Calmount Park, Calmount Avenue
Dublin 12,
D12TH56

International Tel: +44 (0)1942 433343 (
Spain Tel: 00 34 938 005642

Documents / Resources

	<p>4lite 4L2-102 Floodlight Range [pdf] Instructions 4L2-102 Floodlight Range, 4L2-102, Floodlight Range, Range</p>
--	---