



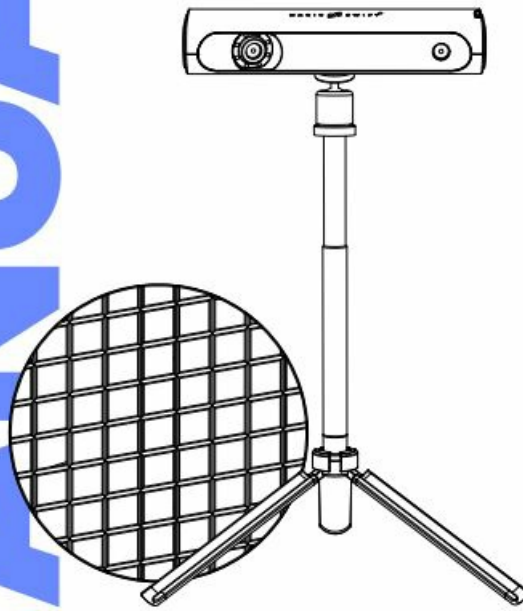
3DMAKERPRO MagicSwift Plus 3D Scanner Instruction Manual

[Home](#) » [3DMakerpro](#) » 3DMAKERPRO MagicSwift Plus 3D Scanner Instruction Manual 

3DMAKERPRO MagicSwift Plus 3D Scanner
Instruction Manual

V2.0

3DMAKERPRO
store.3dmakerpro.com



MAGICSWIFT Plus

Hardware Connection **P1**

Packing List **P3**

3DMAKERPRO

f @3DMakerProCares
@official3DMakerPro
@3DMakerPro
https://store.3dmakerpro.com/
service@3dmakerpro.com

JimuMeta

f @JimuMeta
@JimuMeta
https://www.jimumeta.com/
service@jimumeta.com

Download latest **JMStudio** from
<https://forum.jimumeta.com/home/help/download.html>

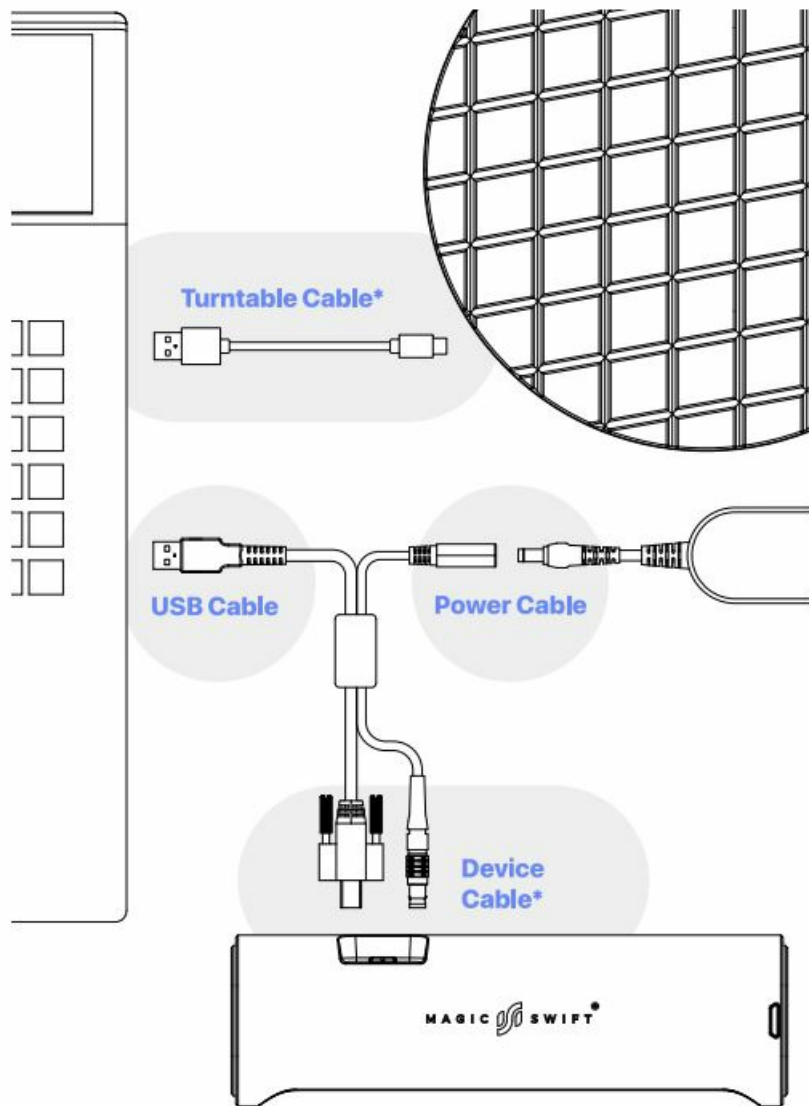
Get latest **Manual** from
<https://forum.jimumeta.com/home/help/manual.html>



Contents

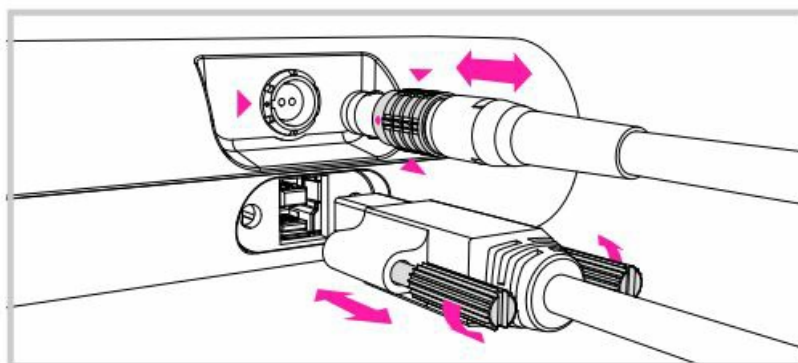
- 1 **HARDWARE CONNECTION**
- 2 Device Cable
- 3 **PACKING LIST**
- 4 Documents / Resources

HARDWARE CONNECTION



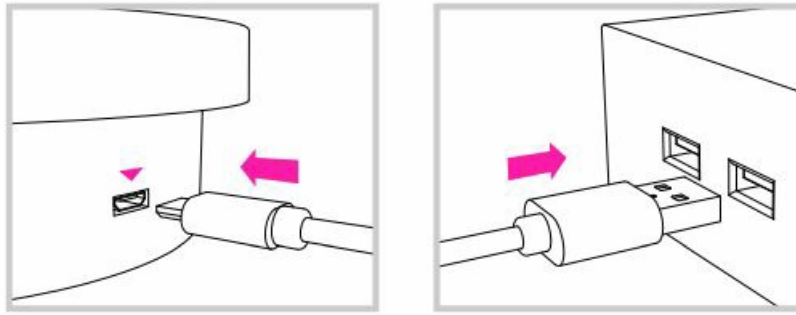
Plug one side of the data transmission cable (as it's showing Device Cable) into the scanner, another into the computer USB port and power adapter; The turntable cable is for powering up the turntable.

Device Cable



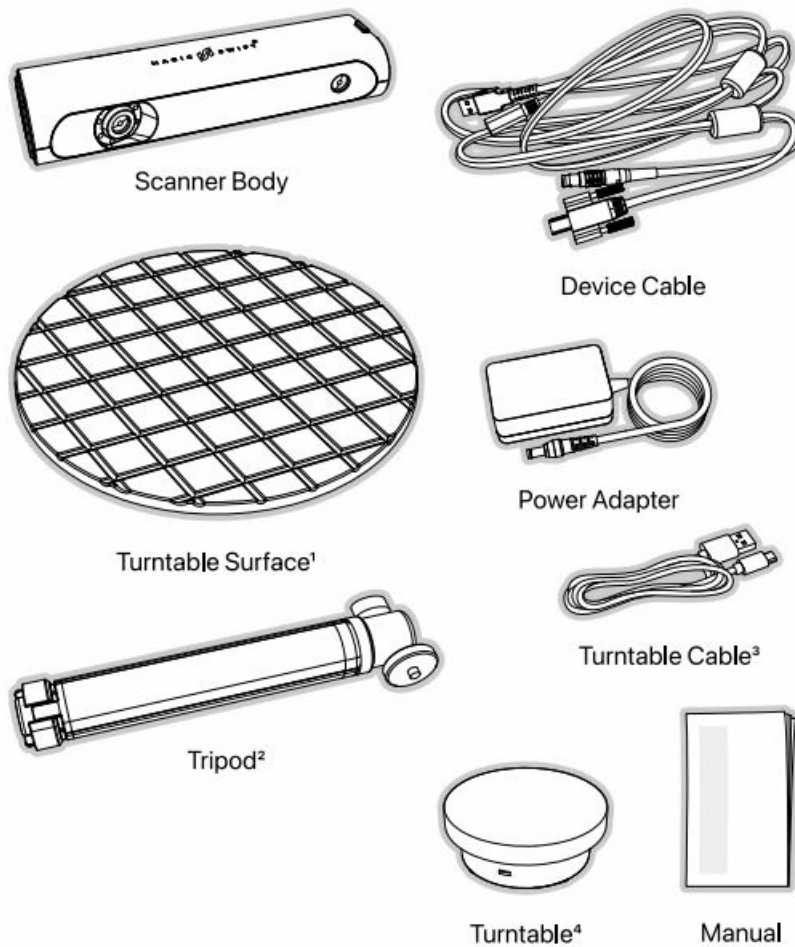
Plug the device cable into the port of the scanner, make sure the red dot is lined up with the groove on the port; To unplug the cable, move backwards the bushing (as marked with the red triangles) and pull out the cable directly.

* Turntable Cable



The turntable can be powered up by connecting it to the computer or the power adapter with the turntable cable.

PACKING LIST



* Product images are for illustrative purposes only.


* 1234Not included in the Standard Combo.

Operating System Requirement

Minimum Intel Core i5 8th, 16GB RAM, MX250 GPU with 2GB VRAM

Recommended Intel Core i7 8th, 16GB RAM, NVIDIA1060 GPU with 4GB VRAM

⚠ To prevent antivirus software from blocking the driver, AA please uninstall the antivirus software.

	<p>3DMAKERPRO MagicSwift Plus 3D Scanner [pdf] Instruction Manual</p> <p>JMSM 4064161255293, MagicSwift Plus, MagicSwift Plus 3D Scanner, 3D Scanner, Scanner</p>
---	---