



3Dconnexion Keyboard Pro Normal USB Keyboard with Numpad User Manual

[Home](#) » [3Dconnexion](#) » 3Dconnexion Keyboard Pro Normal USB Keyboard with Numpad User Manual 

3Dconnexion

Contents

- [1 3Dconnexion Keyboard Pro Normal USB Keyboard with Numpad User Manual](#)
- [2 Setting up your 3Dconnexion Keyboard Pro with Numpad](#)
 - [2.1 Quickstart Guide](#)
 - [2.2 Connecting Keyboard Pro](#)
 - [2.3 Pairing options for the Numpad Pro](#)
 - [2.4 Configure your 3Dconnexion Keyboard/Numpad](#)
 - [2.5 Advanced Settings](#)
 - [2.6 Assigning Commands using the flyout window](#)
 - [2.7 Creating Macros](#)
 - [2.8 Creating Radial Menus](#)
 - [2.9 Working with the On-Screen Display](#)
- [3 Documents / Resources](#)
 - [3.1 References](#)
- [4 Related Posts](#)

3Dconnexion Keyboard Pro Normal USB Keyboard with Numpad User Manual



Find out how to customize your 3Dconnexion Keyboard to suit your needs. From basic settings through to advanced button customization, macros and the setup of your 3Dconnexion Numpad, you'll soon be enjoying new levels of speed, comfort and performance!

Setting up your 3Dconnexion Keyboard Pro with Numpad

Quickstart Guide

Connecting Keyboard Pro

3Dconnexion Keyboard Pro is a normal USB keyboard. Make sure the Keyboard Pro is connected to a USB port of your PC before starting the installation process.

Download and install the latest software package

Make sure you have the latest 3Dconnexion software installed. The latest version can be downloaded at 3dconnexion.com/drivers. After installation, you can access all important functions and settings via the 3Dconnexion Home app.

Pairing options for the Numpad Pro

Turn on the Numpad Pro

Turn on the device with the power switch located on the right rear side of the Numpad.

You have three different options to connect your Numpad Pro to your computer:

- **Connect Numpad Pro (wireless)** – In option 1 (described in the Quickstart Guide above), you connect your Numpad Pro to the Keyboard Pro's built-in Universal Receiver via an encrypted connection. Since this connection is already pre-configured, you only need to make sure that your Keyboard Pro is connected to the computer and turn on the Numpad Pro when you use it for the first time. The Numpad Pro will connect automatically and will be ready to use.

- **Connect Numpad Pro (Bluetooth)** – With option 2, you connect your Numpad Pro directly to your computer via Bluetooth. To put your device into Bluetooth pairing mode, you must first remove the pre-configured connection with the Keyboard Pro. To do this, first go to >Settings in the 3Dconnexion Home app, then >Paired Devices and remove the Numpad from the list of connected devices (alternatively, you can unplug the Keyboard Pro). Now, turn on the device via the power switch located on the right rear side of the Numpad – the status LED on your Numpad Pro will start flashing blue. Next, make sure Bluetooth is active on your PC and in discover mode. You will now be able to choose your device from the list and it.

will pair to your PC. If pairing was successful, the device will appear on the list of connected devices and the status LED will turn off.

- **Connect Numpad Pro (with cable)** – Connect the Numpad to your PC using the supplied USB cable and turn on the device via the power switch located on the right rear side of the Numpad. The device will automatically start charging (LED pulses green) and is ready to be used. When the device is fully charged, the status LED will stop pulsing and will remain permanently green.

How to read the status LED

The Numpad Pro comes with a status LED that shows the connection status as well as the battery status. Battery status:

Immediately after turning on the device, before it enters pairing mode, the LED will show you the current charge level for 2 seconds.

- **Green:** The 3Dconnexion Numpad Pro is sufficiently charged.
- **Red:** The Numpad Pro does not have enough charge and requires charging. Connect the device with the included USB cable to your computer to charge – the status LED will now start pulsing green. When the device is fully charged, the LED will stop pulsing and turn solid green.

Connection status:

After the charging status is displayed for two seconds, the device will show the current pairing mode.

Flashing white: Wireless pairing with 3Dconnexion Keyboard Pro.

Blue flashing: Bluetooth pairing

When the device has been successfully paired, the light will turn off and will only light up (in the corresponding color) when an input is made.

Getting started

Once you have successfully installed the latest 3Dconnexion software, the 3Dconnexion Home App gives you access to the different 3Dconnexion apps (such as the 3Dconnexion Viewer), allows you to change the settings of your devices, and enables you to register your products:

3Dconnexion Home – training applications:

Here you will find a trainer and a demo environment for the SpaceMouse as well as our 3Dconnexion Viewer optimized for CAD users.

3Dconnexion Properties:

This is where you can customize settings for your 3Dconnexion Keyboard Pro with Numpad, including the On-Screen-Display, Button Mapping, Paired Devices, and a lot more.

3Dconnexion Manual:

This help file, which provides general help in working with the properties panel settings and Keyboard/Numpad

usage.

Website:

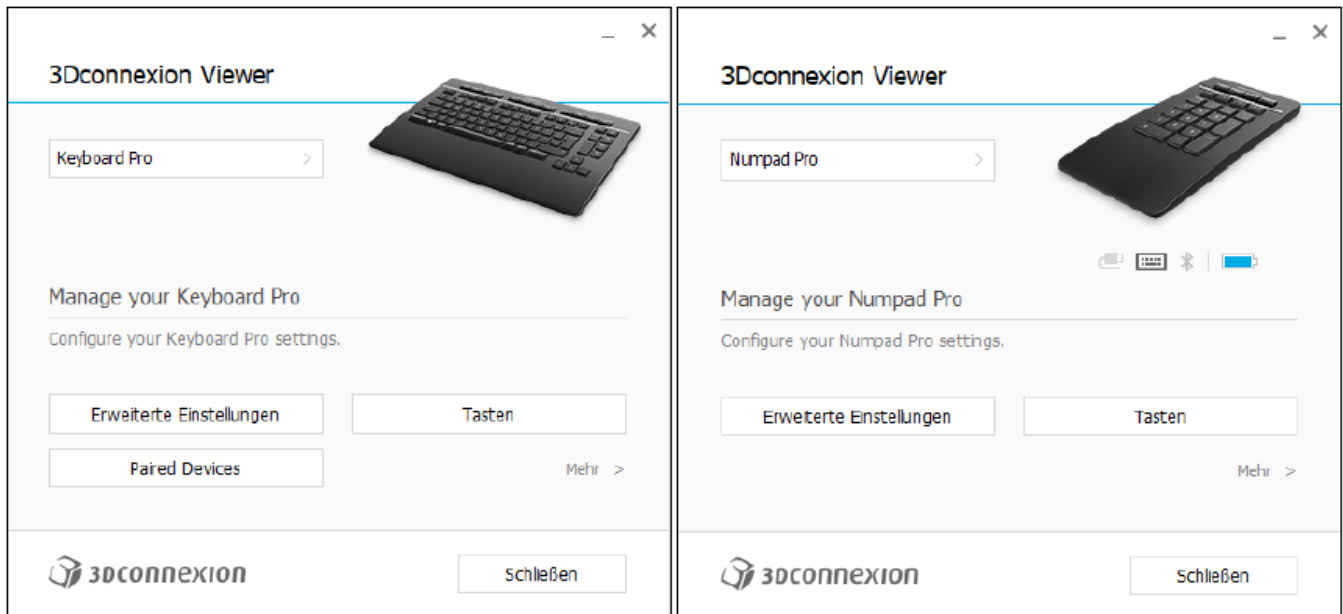
Our website, 3dconnexion.com/drivers, also provides additional information on our Keyboard/Numpad and answers to frequently asked questions as well as the product registration.

Welcome from 3Dconnexion Page 5 of 13

3Dconnexion Properties

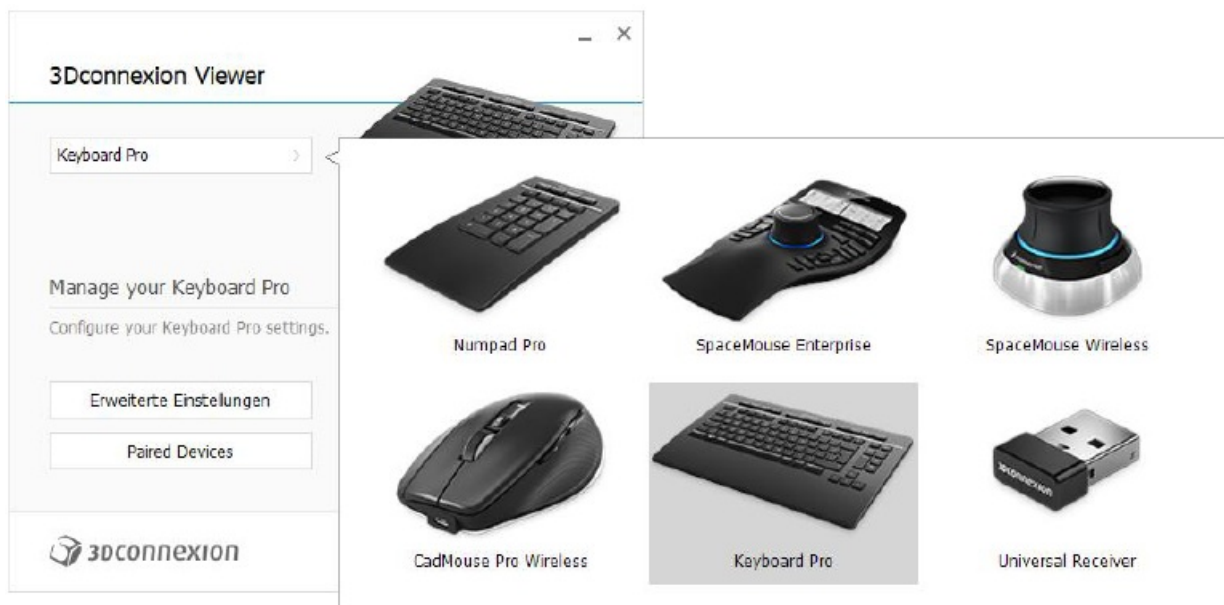
You can access the 3Dconnexion Properties panel either via the 3Dconnexion Home icon (on your desktop), the icon in your notification area (systray), or the start menu.

At the top of the panel you see the active application. Any changes you make to Keyboard's/Numpad's Key settings are relevant to this application only.



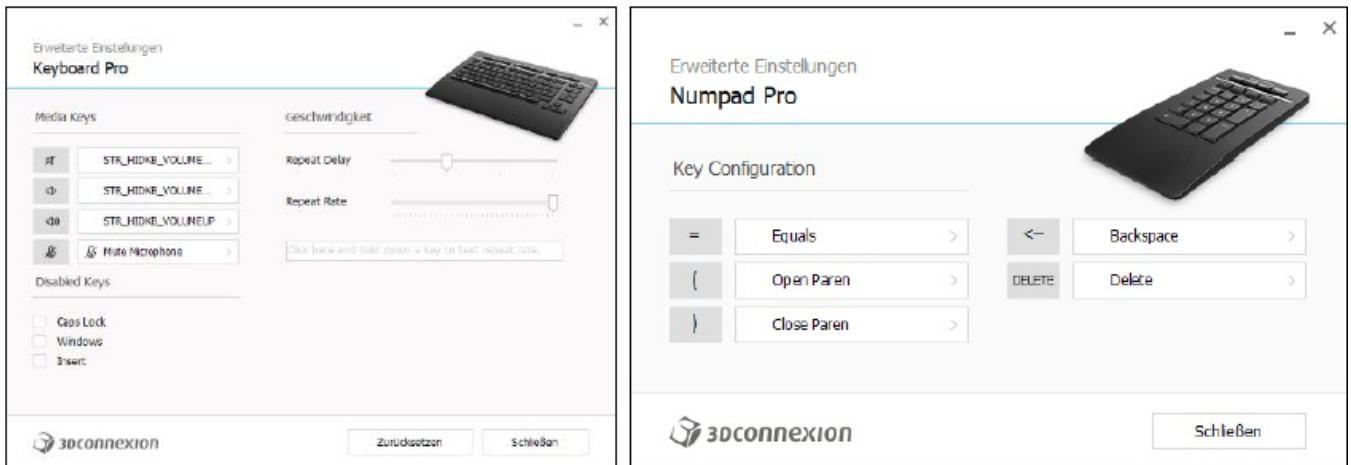
Configure your 3Dconnexion Keyboard/Numpad

If you have multiple 3Dconnexion devices connected, you can select the one you want to configure by clicking on the flyout button at the top left of the panel and then selecting the relevant device.



Advanced Settings

The “Advanced Settings” panel allows you to configure Keyboard/Numpad settings. These settings are not program-specific but are the same for all programs system-wide.



Keyboard Pro

Media Keys

By clicking on the “>” arrow on the right-hand side of the key field you open a flyout window with the help of which you can assign commands, Macros or Radial Menus to the Media Keys (see also: Assigning Commands using the flyout window).

Speed

By moving the two sliders you can change the repeat delay (the time between when you press and hold a key and when the computer detects the keystroke as multiple keystrokes) and the repeat rate (the speed at which the computer outputs the multiple keystrokes). In the field below you can test your changes.

Disabled Keys

Disable Caps Lock: by checking this box, the Caps Lock Key is deactivated.

Windows: by checking this box, the Windows Key is deactivated.

Insert: by checking this box, the Insert Key is deactivated.

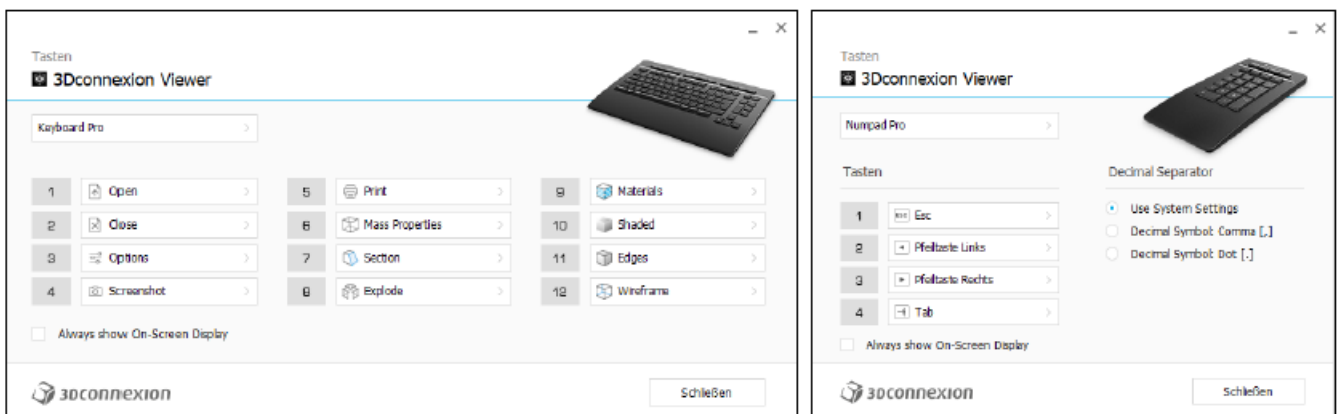
Numpad Pro

Key Configuration

By clicking on the “>” arrow on the right-hand side of the key field you open a flyout window with the help of which you can assign commands, Macros or Radial Menus to the Keys (see also: Assigning Commands using the flyout window).

Buttons

The Buttons panel within 3Dconnexion Properties allows you to assign commands, Macros or Radial Menus to the programmable 3Dconnexion keys on top of your Keyboard/Numpad. At the top of the panel, you see the active application. Any changes you make to Keyboard/Numpad settings are relevant to this application only. While you are working in an application, the On-Screen Display always shows you the current assignment of the keys for this app. To hide the On-Screen Display, simply uncheck “Always show On-Screen Display”.



A note about Environment sensitivity:

Some applications feature environment sensitive key mapping.

In those applications you can have different key assignments depending on the current active environment.

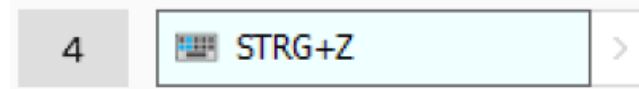
Numpad Pro

Decimal Separator

You can decide whether the decimal separator is automatically selected based on the system settings or whether you manually choose the “Comma” or “Dot” setting.

Assigning Commands using the Quick Macro function

The Quick Macro function allows you to quickly and easily assign any key combination to a 3Dconnexion key of your choice. Simply click in the field on the right of the 3Dconnexion key you want to assign and then press the desired keys on your keyboard.



When you are done, you can close the window, your input will be saved automatically. Pressing the key you have just programmed will now trigger the key combination you have set.

Assigning Commands using the flyout window

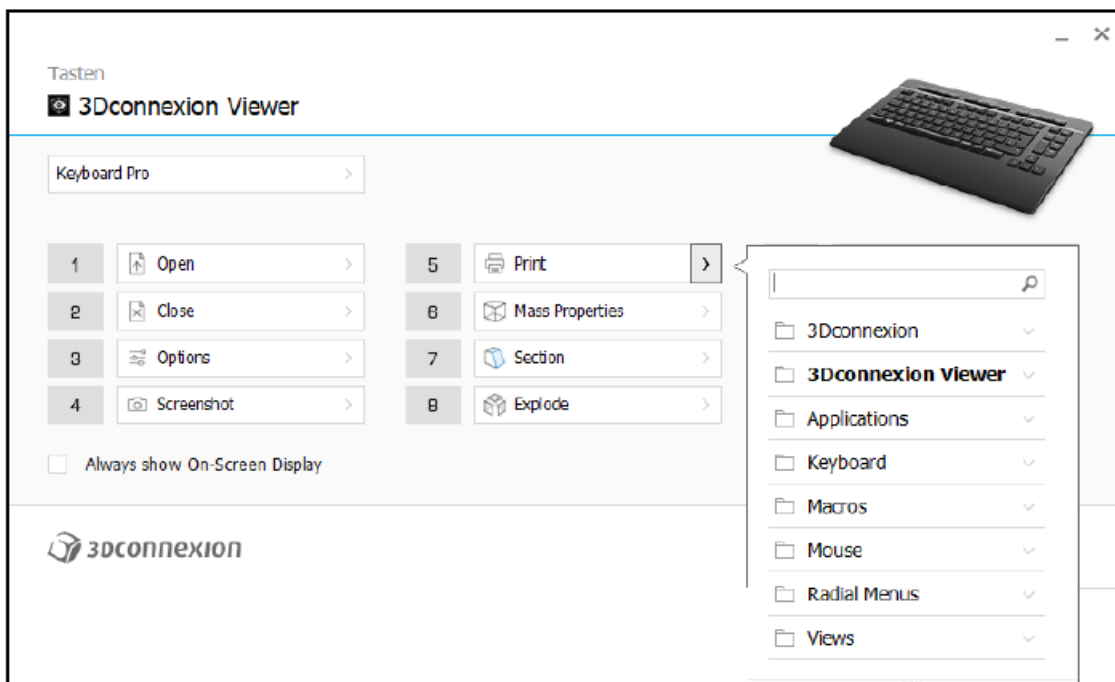
Clicking on the “>” arrow on the right-hand side of the key field opens a flyout window for that Keyboard/Numpad key:

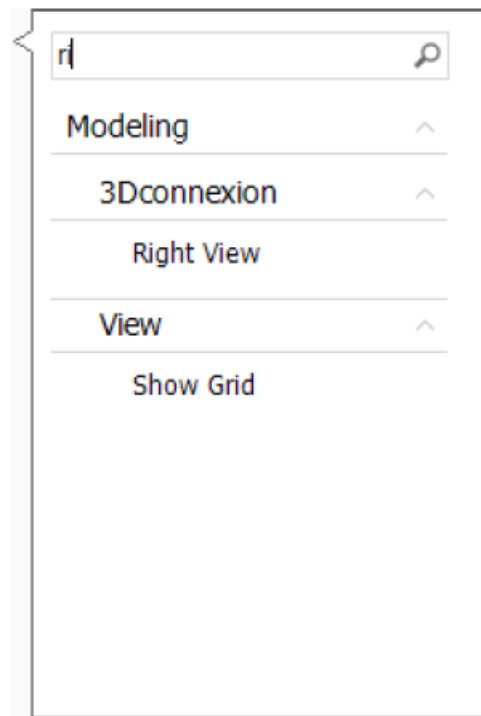
The category of the command that is currently assigned to that key is highlighted in bold.

The flyout window allows you to browse or search for commands in different categories such as 3Dconnexion or application commands. When you select a command by clicking on it, it is automatically assigned to the Keyboard/Numpad Key.

Using the Live Search field

You can search for specific commands by typing text into the Live Search field. Only commands (and their parent categories) which contain the text sequence you enter are shown in the flyout window.



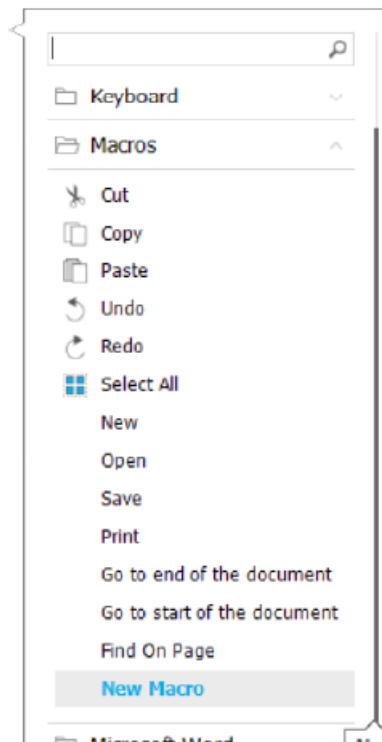


Creating Macros

To create a new Macro, click in the field on the right of a programmable key, expand the “Macro” category and click on “New Macro”.

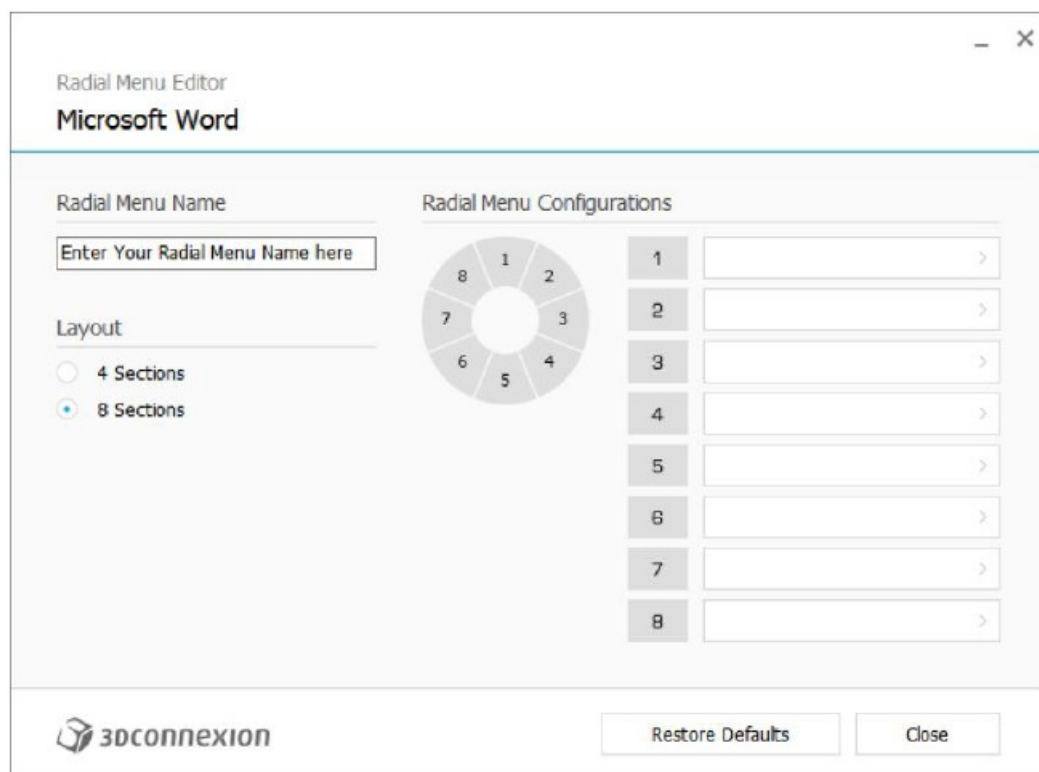
This opens the Macro Editor where you can assign a name for your Macro and a sequence of keystrokes in the corresponding fields. Clicking on “Save” will automatically assign the new Macro to the button from where you opened the panel.

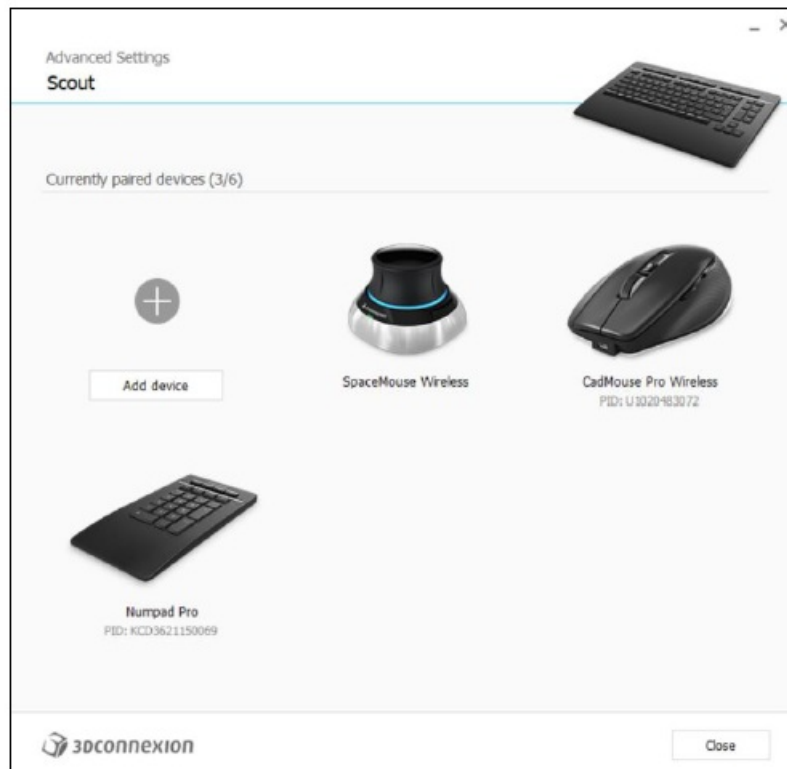
A screenshot of a dialog box titled 'Macro Editor'. The dialog has a title bar with standard window controls (minimize, maximize, close). Below the title bar, the text 'Your Macro' is displayed. The main area of the dialog contains two sections. The first section is labeled 'Macro Name' and has a text input field with the placeholder text 'Enter your macro name here'. The second section is labeled 'Key Combination' and contains a text input field with the placeholder text 'Click here to enter your key combination'. Below this input field is a small 'X' icon followed by the text 'Delete key combination'. At the bottom of the dialog are two buttons: 'Save' and 'Cancel'.



Creating Radial Menus

To create a new Radial Menu, expand the “Radial Menu” category and click on “New Radial Menu”. This brings up the Radial Menu Editor where you can assign a name and commands to the different sections. Your new Radial Menu will be automatically assigned to the key from where you opened the panel.





To do so, click the “Add Device” or “+” button, choose your device and follow the instructions of the pairing tool.

Important information

Product Specification

Manufacturer: 3Dconnexion

Product Name: Keyboard Pro with Numpad

Voltage / Current: 5V 50mA (Keyboard Pro), 5V 100mA (Numpad Pro)

Models (Language layout): 3DX-700090, 3DX-700091, 3DX-700092, 3DX-700093, 3DX-700094, 3DX-700095, 3DX-700096, 3DX-700097, 3DX-700098, 3DX-700099, 3DX-700100, 3DX-700101, 3DX-700102, 3DX-700103, 3DX-700104

Manufacturer: 3Dconnexion

Product Name: Keyboard Pro

Voltage / Current: 5V 50mA

Models (Language layout): 3DX-600100, 3DX-600101, 3DX-600102, 3DX-600103, 3DX-600104, 3DX-600105, 3DX-600106, 3DX-600107, 3DX-600108, 3DX-600109, 3DX-600110, 3DX-600111, 3DX-600112, 3DX-600113, 3DX-600114

Manufacturer: 3Dconnexion

Product Name: Numpad Pro

Voltage / Current: 5V 100mA

Models (Language layout): 3DX-600080, 3DX-600081, 3DX-600082, 3DX-600083, 3DX-600084, 3DX-600085, 3DX-600086, 3DX-600087, 3DX-600088, 3DX-600089, 3DX-600090, 3DX-600091, 3DX-600092, 3DX-600093, 3DX-600094, 3DX-600095, 3DX-700105

Guidelines for Safe and Efficient Use

Do not attempt to disassemble the products unless it is for end-of-life disposal.

Do not expose your products to liquid, humidity, or moisture.

Do not operate your products when the temperature is outside the specified operation range of 0°C (32°F) to 45°C (104°F).

Battery Warning!

The 3Dconnexion Numpad has a non-user-serviceable battery. Please do not attempt to change the battery yourself. Instead, contact 3Dconnexion Technical Support for repair or replacement information.

Battery information: Rechargeable Li-ion Battery, PL432335, 360mAh, 1.30Wh, 3.7V, Huizhou Everpower Technology Co., Ltd. Risk of explosion or personal injury if batteries are exposed to conducting materials, liquid, fire, or heat. Dispose of spent or damaged device including batteries according to local laws

Warning: – replacement of a battery with an incorrect type that can defeat a safeguard (for example, in the case of some lithium battery types), – disposal of a battery into fire or a hot oven, or mechanically crushing or cutting of a battery, that can result in an explosion, – leaving a battery in an extremely high temperature surrounding environment that can result in an explosion or the leakage

of flammable liquid or gas, and – a battery subjected to extremely low air pressure that may result in an explosion or the leakage of flammable liquid or gas.

Risk of explosion or personal injury if batteries are exposed to conducting materials, liquid, fire, or heat. Dispose of spent or damaged device including batteries according to local laws.

Environment and Disposal

The 3Dconnexion Keyboard Pro with Numpad is compliant to RoHS Directive (EU) 2015/863, WEEE Directive 2012/19/EU, Packaging and Packaging Waste Directive (EU) 2015/720. The 3Dconnexion Numpad is compliant with the Battery Directive 2013/56/EU for environment conformity.

Wireless Product

Hereby, 3Dconnexion declares that these radio-frequency products are in compliance with the essential requirements and other relevant provisions of RED (Radio Equipment Directive 2014/53/EU).

The Declaration of Conformity (CE DoC) can be retrieved from www.3dconnexion.com/compliance.

Compliance

CE		<p>This product is in conformity with LVD 2014/35/EU, EMC Directive 2014/30/EU, RED Directive 2014/53/EU, RoHS</p> <p>Directive 2011/65/EU, and WEEE Directive 2012/19/EU under the following specifications:</p>
----	--	---

UKCA		<p>This product is in conformity with Electromagnetic Compatibility Regulations 2016, Electrical Equipment (Safety) Regulations 2016, Radio Equipment Regulations 2017, The Restriction of the Use of Certain Hazardous Substances in</p> <p>Electrical and Electronic Equipment Regulations 2012</p>
EAC		<p>This product meets the requirements of TR EAEU 037/2016 “On restricting the use of hazardous substances in electrical and radioelectronic products”</p>

FCC		<p>FCC ID: 2AAHQ-KBP (3Dconnexion Keyboard Pro), 2AAHQ-NPP (3Dconnexion Numpad Pro) This device complies with Part 15 of the FCC Rules. Operation is subject to the following two conditions: (1) this device may not cause harmful interference, and (2) this device must accept any interference received, including interference that may cause undesired operation</p> <p>Warning: Changes or modifications to this unit not expressly approved by the party responsible for compliance could void the user's authority to operate the equipment.</p> <p>NOTE: This equipment has been tested and found to comply with the limits for a Class B digital device, pursuant to Part 15 of the FCC Rules. These limits are designed to provide reasonable protection against harmful interference in a residential installation. This equipment generates, uses and can radiate radio frequency energy and, if not installed and used in accordance with the instructions, may cause harmful interference to radio communications.</p> <p>However, there is no guarantee that interference will not occur in a particular installation. If this equipment does cause harmful interference to radio or television reception, which can be determined by turning the equipment off and on, the user is encouraged to try to correct the interference by one or more of the</p> <p>following measures:</p> <ul style="list-style-type: none">I Reorient or relocate the receiving antenna.I Increase the separation between the equipment and receiver.I Connect the equipment into an outlet on a circuit different from that to which the receiver is connected.I Consult the dealer or an experienced radio/TV technician for help <p>The device must not be co-located or operating in conjunction with any other antenna or transmitter.</p> <p>Responsible party located in the United States: 3Dconnexion Inc., 40 Richards Ave – 4th floor Norwalk, Connecticut 06854, United States, Phone: 203-838-1800, Email: info@3dconnexion.com</p>
-----	--	--

IC		<p>IC ID: 11297A-KBP (3Dconnexion Keyboard Pro), 11297A-NPP (3Dconnexion Numpad Pro) This device complies with Industry Canada licence-exempt RSS standard(s). Operation is subject to the following two conditions: (1) This device may not cause interference, and (2) This device must accept any interference, including interference that may cause undesired operation of the device. Changes or modifications not expressly approved by the responsible party for compliance could void the user's authority to operate the equipment. Please visit www.3dconnexion.com/compliance for additional compliance information</p> <p>CAN ICES-003(B) / NMB-003(B)</p>
RCM		<p>This product is in conformity with AS/NZS 4417.2:2018.</p>

WEEE		<p>This product must be handled pursuant to European directive 2012/19/EU in order to be recycled or dismantled to minimize its impact on the environment. User has the choice to give his product to a competent recycling organization or to the retailer when he buys a new electrical or electronic equipment.</p>
RoHS EU		<p>This product is in compliance with Directive (EU) 2015/863 amendment of the RoHS DIRECTIVE 2011/65/EU, RoHSRecast, Article 4(1) on the restriction of the use of certain hazardous substances in electrical and electronic equipment.</p>
RoHS China		<p>The Environment Friendly Use Period (EFUP) of this product is 10 years.</p>

Supported Operating Systems

Windows 10, Windows 8.1

Wireless Technologies

3Dconnexion Wireless Technology 2,4 GHz, Bluetooth 5.0 Low Energy Technology (encrypted)


Warranty Information

3Dconnexion Keyboard Pro with Numpad comes with a 3-year limited hardware warranty. Please refer to www.3dconnexion.com/warranty for further information.

Technical Support

Contact information can be found on the web at www.3dconnexion.com/support.

Documents / Resources

	<p>3Dconnexion Keyboard Pro Normal USB Keyboard with Numpad [pdf] User Manual KBP, 2AAHQ-KBP, 2AAHQKBP, Numpad Pro, Keyboard Pro, Keyboard Pro with Numpad, Keyboard Pro Normal USB Keyboard with Numpad, Normal USB Keyboard with Numpad</p>
---	--

References

-  [Product Compliance - 3Dconnexion UK](#)
-  [Support. Knowledge. Articles.](#)
-  [Limited Hardware Warranty - 3Dconnexion](#)
-  [3DxWare 10 Archives - 3Dconnexion DE](#)
-  [3DxWare 10 Archives - 3Dconnexion US](#)