

**3 Legged Thing<sup>®</sup>  
OM1 Dedicated  
L-Bracket For  
OM System**



## 3 Legged Thing OM1 Dedicated L-Bracket For OM System Instruction Manual

[Home](#) » [3 Legged Thing](#) » 3 Legged Thing OM1 Dedicated L-Bracket For OM System Instruction Manual 

### Contents

- [1 3 Legged Thing OM1 Dedicated L-Bracket For OM System](#)
- [2 Product Usage Instructions](#)
- [3 OVERVIEW](#)
- [4 INSTALLATION](#)
- [5 WARRANTY](#)
- [6 FAQs](#)
- [7 Documents / Resources](#)
  - [7.1 References](#)



**3 Legged Thing OM1 Dedicated L-Bracket For OM System**



## **Product Usage Instructions**

### **Anatomy of Ollie QD:**

1. Base Plate
2. Upright
3. Cut-out for screen
4. Open aspect for cable access
5. Weight-saving cut out in base
6. Peak Design Capture v3 Adapter Plate with longer 1/4-20 screw
7. Toolz Multi Tool
8. QD Socket – Only for QD accessories

### **Attachment of PD Adapter Plate:**

1. To attach the Peak Design Capture v3 adapter plate, remove the 1/4-20 screw from the camera.
2. Insert the longer 1/4-20 screw through the PD plate.
3. Align the small pin hole with the 1/4-20 thread.
4. Securely tighten the adapter plate onto your camera.

### **Warranty Information:**

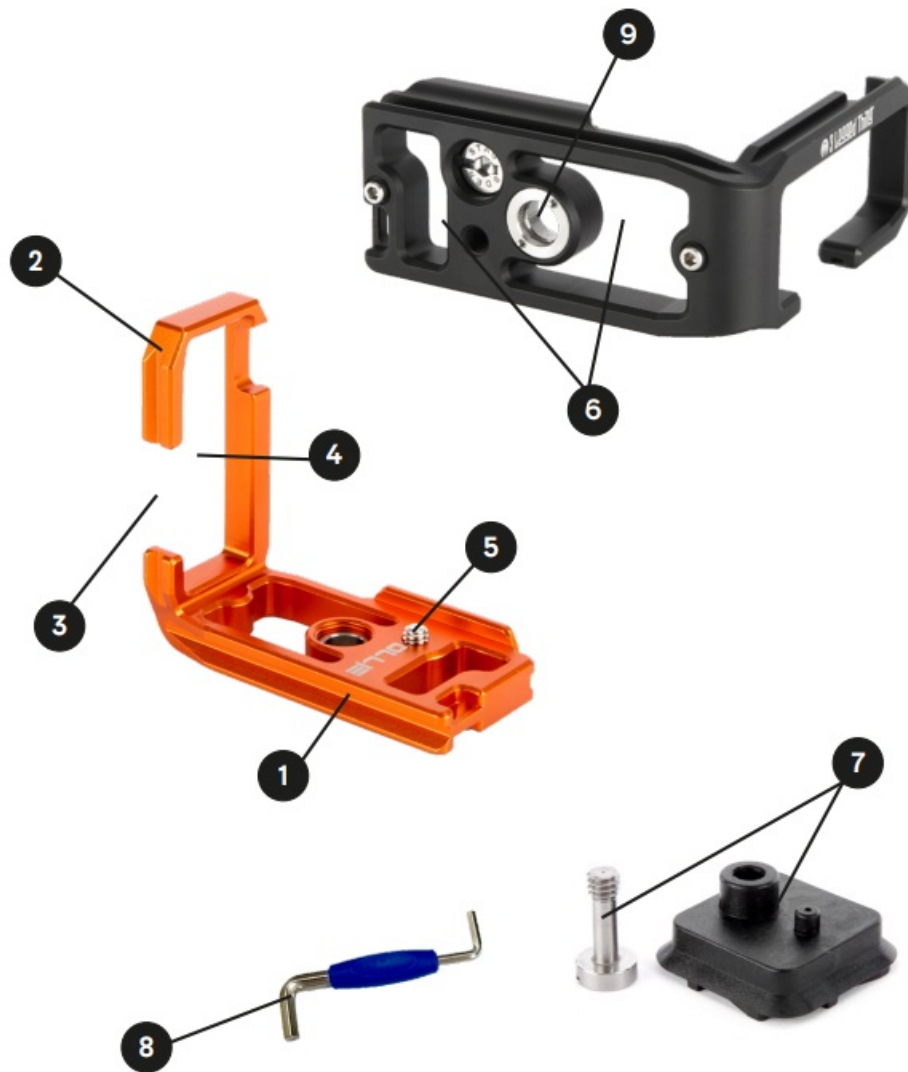
Your OLLIE QD product comes with a 5-Year Global Warranty. Register your product using the serial number found on the box at [www.3leggedthing.com/register](http://www.3leggedthing.com/register).

**For warranty details and coverage, visit**

[www.3leggedthing.com/faq](http://www.3leggedthing.com/faq). The warranty covers only 3 Legged Thing products. Contact [www.3leggedthing.com/support](http://www.3leggedthing.com/support) for any questions or faults.

## OVERVIEW

### Anatomy of Ollie QD

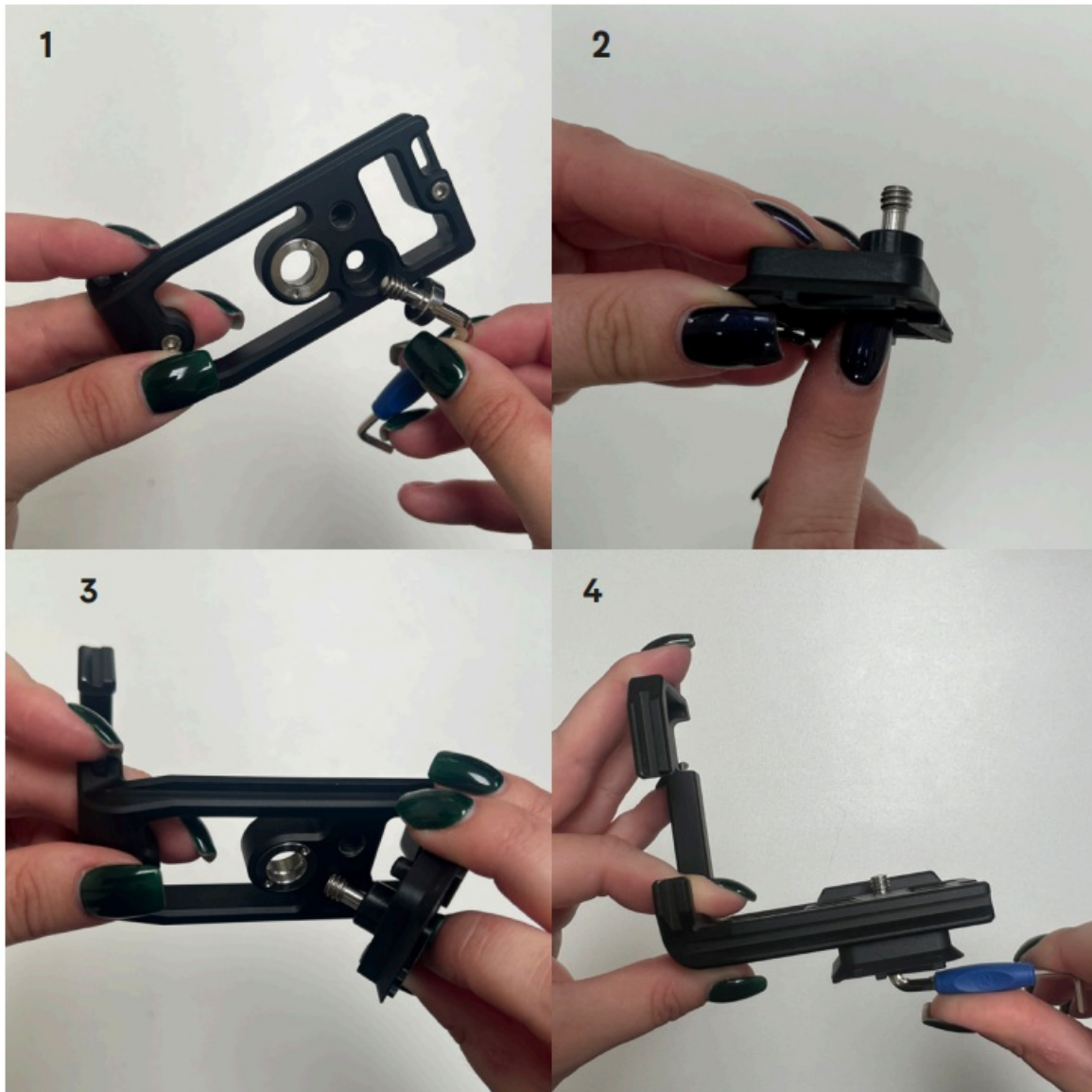


1. Base Plate
2. Upright
3. Cut-out for screen
4. Open aspect for cable access
5. 1/4"-20 stainless steel mounting screw
6. Weight-saving cut out in base
7. Peak Design Capture v3 Adapter Plate with longer 1/4"-20 screw
8. Toolz Multi Tool
9. QD Socket – Only for QD accessories

## INSTALLATION

## Attachment of PD adapter plate

To fit the Peak Design Capture v3 adapter plate to the bracket, simply remove the 1/4"-20 from the camera(1), slot in the longer 1/4"-20 screw through the PD plate (2) and line-up the small pin hole with the 1/4"-20 thread (3). The PD plate will simply slot into place and then you can tighten this onto your camera (4).



## WARRANTY

### Warranty Information

- Your 3LT product comes with a 5 5-year global Warranty. On the box you will find a sticker with a unique serial number and QR code. Use this serial number to register your products at [www.3leggedthing.com/register](http://www.3leggedthing.com/register)
- Details of your warranty can be found at [www.3leggedthing.com/faq](http://www.3leggedthing.com/faq) Your warranty covers 3 Legged Thing products only.
- If you have a question or suspect you have a fault, contact us first at [www.3leggedthing.com/support](http://www.3leggedthing.com/support)



## MORE INFO

### Unit 2A Kinsbourne Farm

- Bury End
- Stagsden
- Bedfordshire
- MK43 8TS
- United Kingdom of Fadeless Splendour

## FAQs

- **Q: What should I do if I suspect a fault in my OLLIE QD?**
  - A: Contact us first at [www.3leggedthing.com/support](http://www.3leggedthing.com/support) for assistance.
- **Q: Can I use the L-Bracket without following the instructions?**
  - A: It is important to read and follow all instructions before using the L-Bracket to avoid misuse and warranty issues.

## Documents / Resources

	<p><a href="#">3 Legged Thing OM1 Dedicated L-Bracket For OM System</a> [pdf] Instruction Manual OM1 Dedicated L-Bracket For OM System, OM1, Dedicated L-Bracket For OM System, L-Bracket For OM System, OM System, System</p>
--	--

## References

- [User Manual](#)

This website is an independent publication and is neither affiliated with nor endorsed by any of the trademark owners. The "Bluetooth®" word mark and logos are registered trademarks owned by Bluetooth SIG, Inc. The "Wi-Fi®" word mark and logos are registered trademarks owned by the Wi-Fi Alliance. Any use of these marks on this website does not imply any affiliation with or endorsement.