



# 1Mii ML301 Transmitter and Receiver 2-in-1 User Manual

[Home](#) » [1Mii](#) » 1Mii ML301 Transmitter and Receiver 2-in-1 User Manual 

## Contents

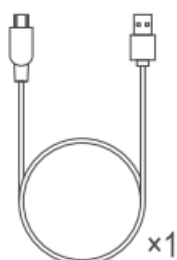
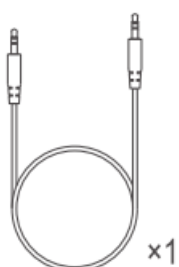
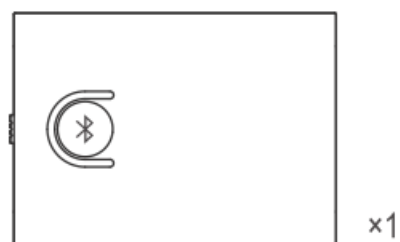
- [1 1Mii ML301 Transmitter and Receiver 2-in-1](#)
- [2 IN The Box](#)
- [3 Product Overview](#)
- [4 Control Functions](#)
- [5 Disposal](#)
- [6 Documents / Resources](#)
- [7 Related Posts](#)



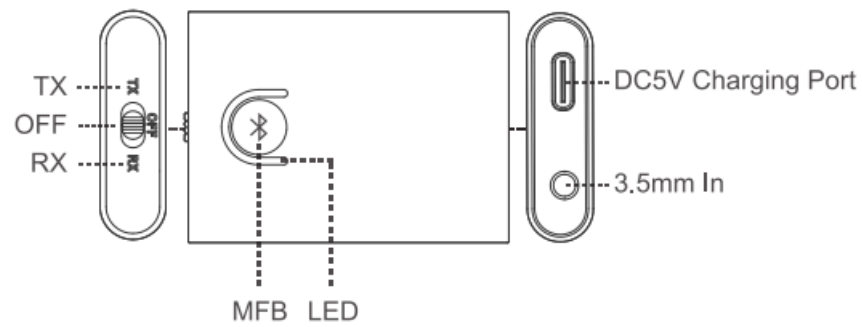
**1Mii ML301 Transmitter and Receiver 2-in-1**



## IN The Box



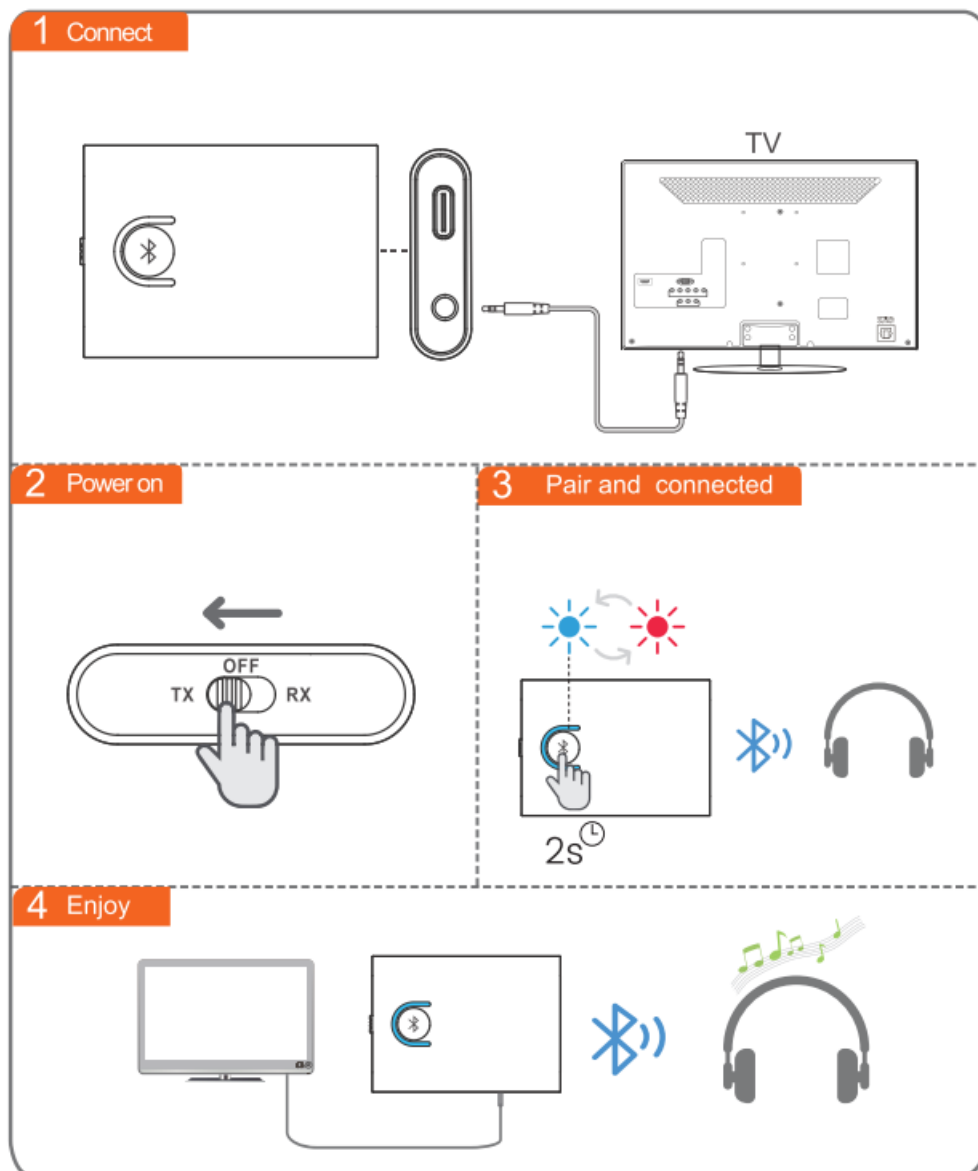
## Product Overview



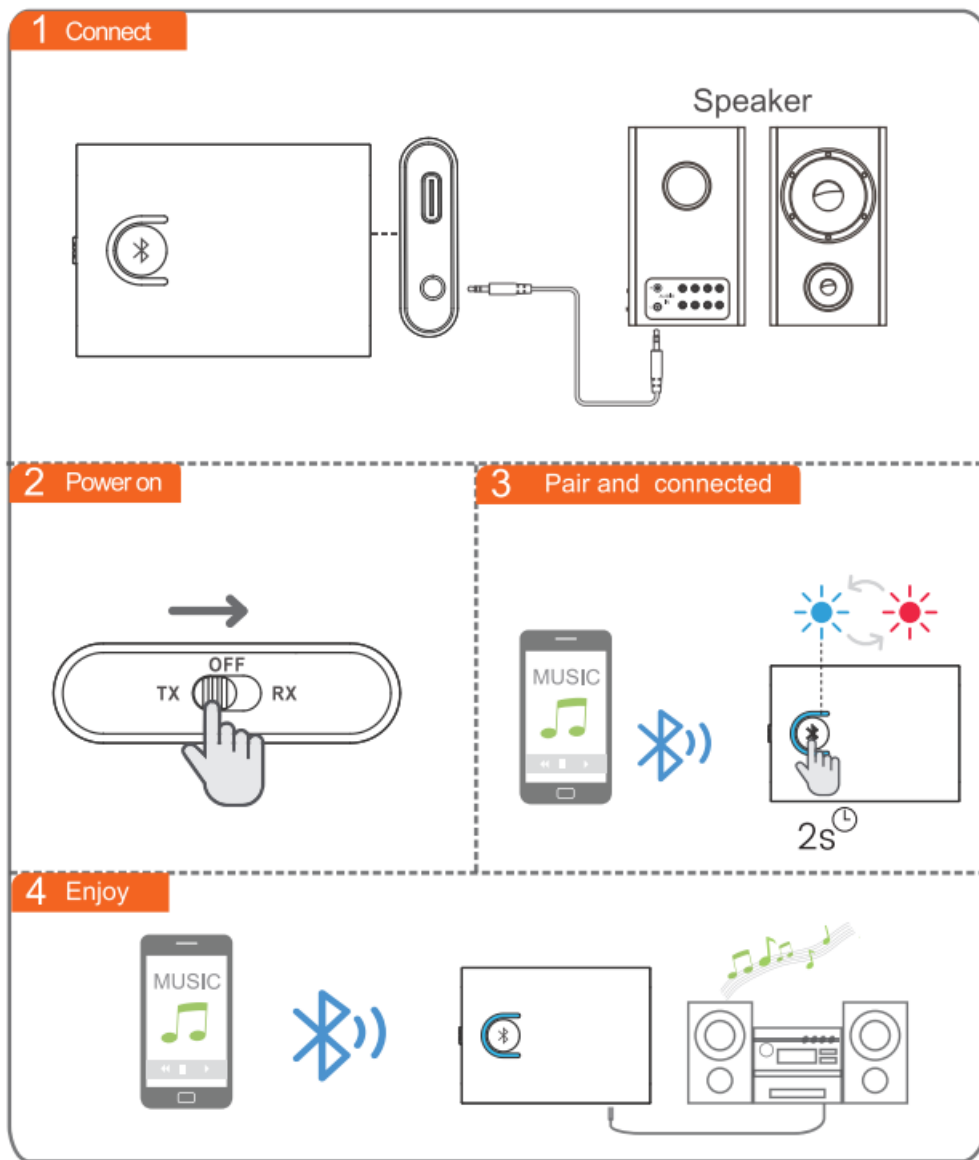
Button	Function	Operation
Bluetooth Symbol	Enter pairing mode	Hold this button for about 2 seconds.
TX	Transmitter mode	Slide to TX to enter transmitting mode
OFF	Power off	Slide to "OFF" to turn off the device
RX	Receiver mode	Slide to RX to enter receiving mode

Status	LED Indicator
Pairing mode	LED flashes fast blue and red
Connected 1 device	LED stays blue
Connected 2 device	LED stays purple
Disconnected	LED flashes blue once every 3 seconds
Restored factory default settings	Hold this button for about 10 seconds. all Leds flash 2 time

## TX MODE

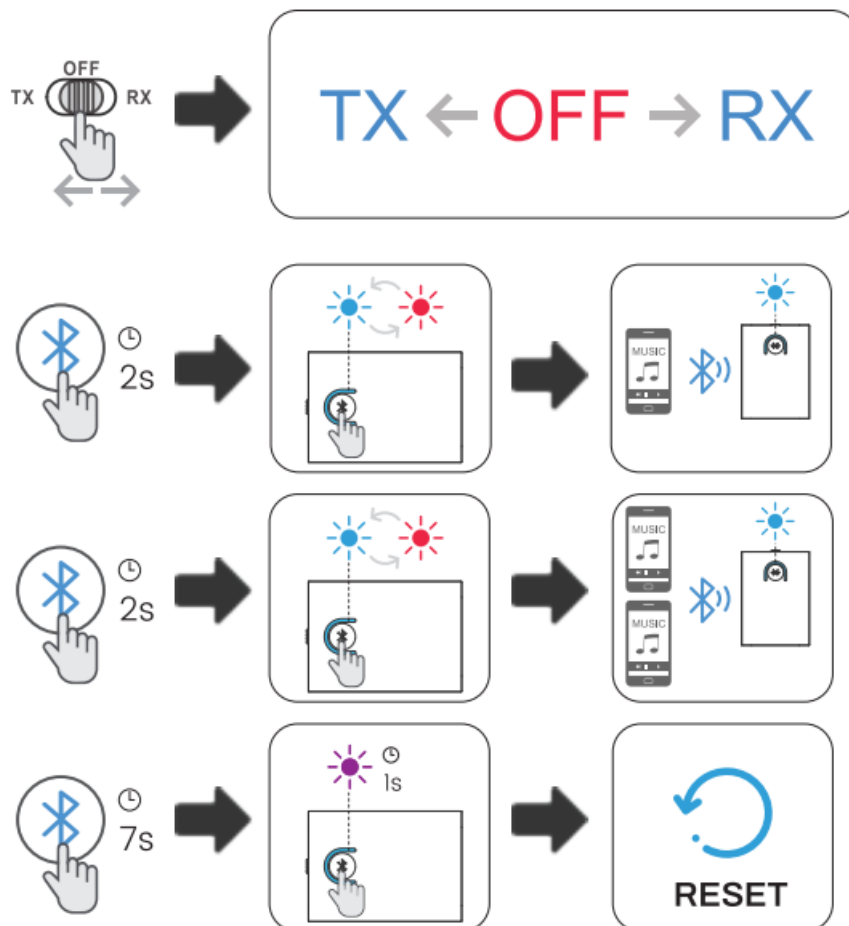


**RX MODE**



## Control Functions

Connect ML301 to device with 3.5mm audio cable. 2.Slide mode switch to "TX/ RT side 3.Adapter will auto-enter pairing mode. set your device to pairing mode. Wait, they will pair and Connected. Pair with the second device Set second device to pairing mode. Set ML301 to pairing mode again, hold the bluetooth button for 2s until the LED flashes Blue and Red. Wait until connected.



## Warnings

Warranty service is limited to normal use only. Any man-made damages such as connecting to an unsuitable power source, using an unsuitable device, or not following the instructions, damages by misusing the product, careless use of the equipment, or improper installation, repairs and adjustments not approved by the company as well as damages that did not occur during shipping may cause the warranty to be ineffective immediately. This warranty does not include shipping fees.

## Disposal

Always dispose of the used appliance at a recycling centre. Do not dispose the used appliance together with household waste.

## Documents / Resources

	<a href="#">1Mii ML301 Transmitter and Receiver 2-in-1 [pdf] User Manual</a> ML301, Transmitter and Receive
---	--