



1Mii B06 Plus Bluetooth Receiver User Manual

[Home](#) » [1Mii](#) » 1Mii B06 Plus Bluetooth Receiver User Manual 

Contents

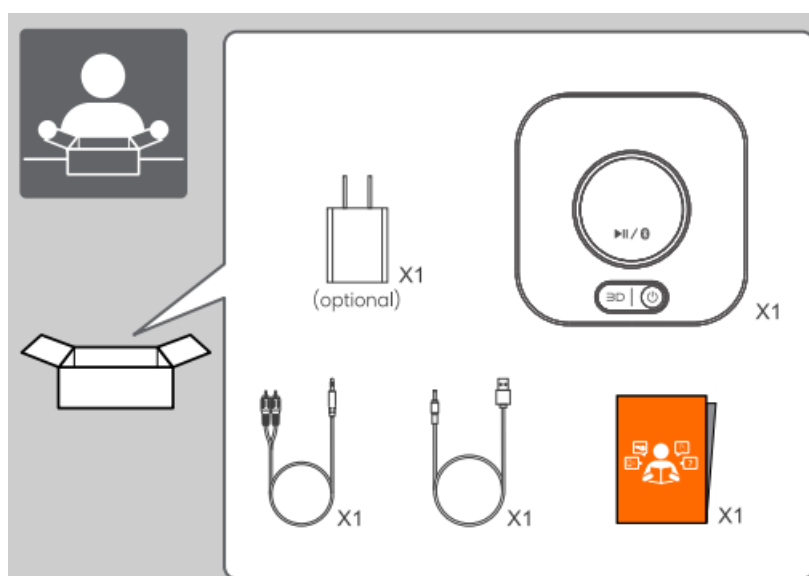
- [1 1Mii B06 Plus Bluetooth Receiver](#)
- [2 WHAT'S IN THE BOX](#)
- [3 Control functions](#)
- [4 Wiring installation](#)
- [5 Dual connection](#)
- [6 Button controls](#)
- [7 LED Indicator](#)
- [8 Warranty](#)
- [9 Documents / Resources](#)
 - [9.1 References](#)
- [10 Related Posts](#)



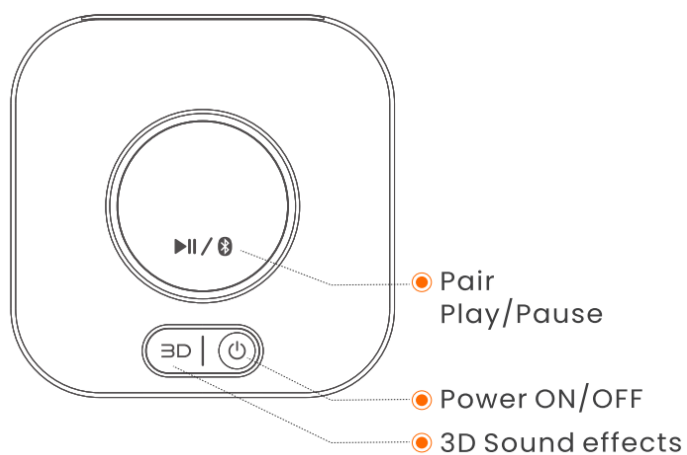
1Mii B06 Plus Bluetooth Receiver










WHAT'S IN THE BOX



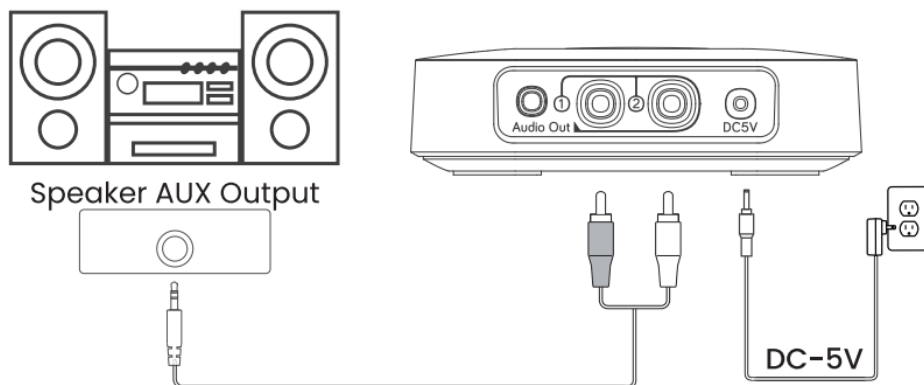
Control functions



Button	Function	Operation
	Power ON/OFF	Long press to power ON/OFF
	Play / Pause	Short press to Play/Pause
	Pair first device	Press and hold for 2s to enter pairing mode
	Pair second device	After pairing the first device, press and hold again for 2 seconds to enter pairing mode.
	Sound effects select	Short press to switch 3D sound effects, LED light will change to green
 + 	Reset	Press and hold  and  for 5 seconds to reset the device

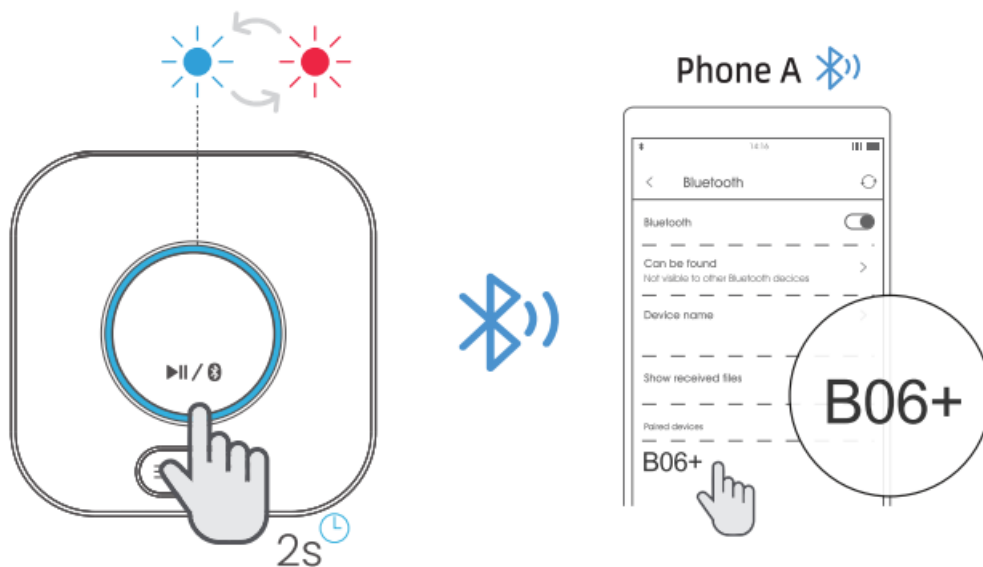
Wiring installation

- Connect the DC-5V power supply. Connect B06+ to the audio input of the speaker. The 806* will automatically power on and enter pairing mode (LED flashing red and blue)



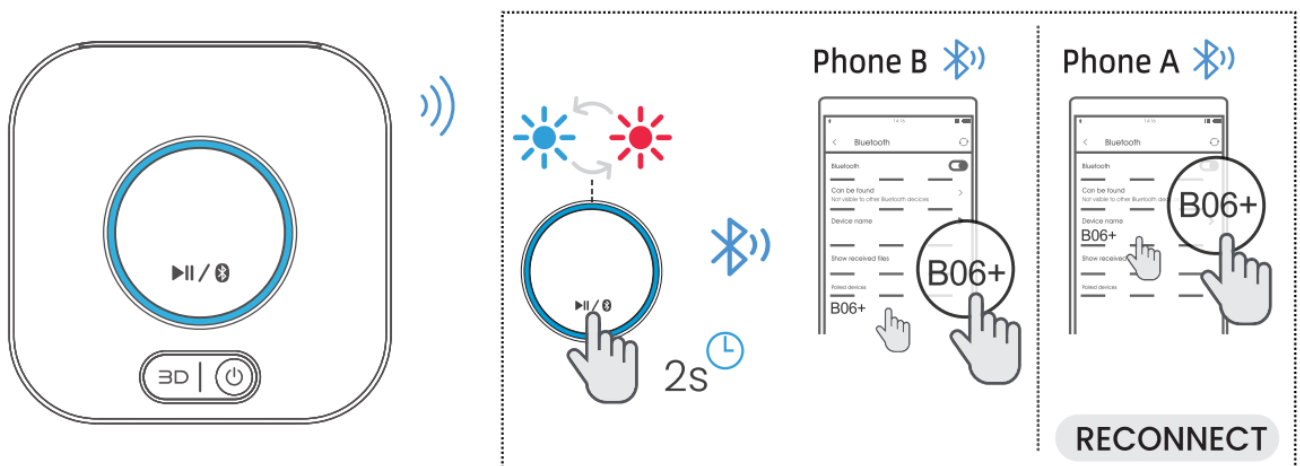
Pair and connect

- In non-pairing mode, please press and hold the  button for 2s to enter pairing mode (LED light flashes red and blue). Activate Bluetooth on your phone.



Dual connection

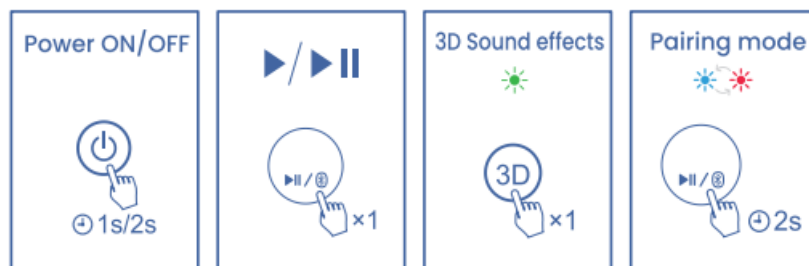
- Press and hold the button again for 2s to enter pairing mode (LED light flashes red and blue). Click “B06+” to connect.



Note: You need to click “B06+” again on the first device to reconnect.

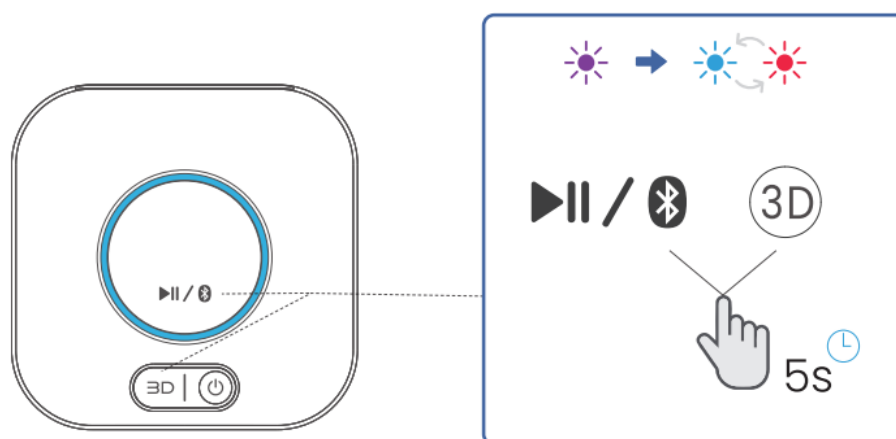
Button controls

- x1**: Press once
- 1s**: Press and hold for second

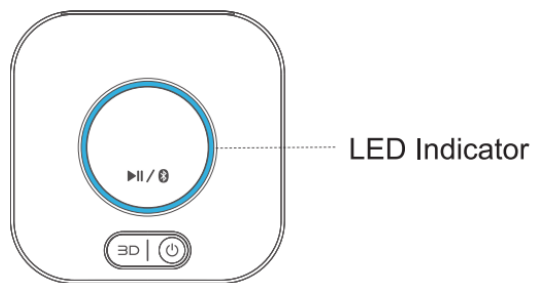


Reset

- Press the button simultaneously for 5 seconds to reset the device(LED flash purple, then red and blue flash quickly).



LED Indicator



LED Indicator	Status
	Pairing mode
	Connected
	Disconnect
	3D Sound effects mode
	Reset
	Power OFF

FCC STATEMENT

This device complies with part 15 of the FCC Rules. Operation is subject to the condition that this device does not cause harmful interference this device may not cause harmful interference, and this device must accept any interference received, including interference that may cause undesired operation. Changes or modifications not expressly approved by the party responsible for compliance could void the user's authority to operate the equipment.

ANK81T international. hereby declares that this product is in compliance with the essential requirements and other relevant provisions of Directive 2014/53/EU. In accordance with Article 10(2) and Article 10(10), this product is allowed to be used in all EU member states.

Warranty

Warranty service is limited to normal use. Any man-made damages such as from connecting to an unsuitable power source, using an unsuitable device, or not following the instructions, as well as damages that did not occur during shipping, repairs, and adjustments not approved by the company, damages from misuse, inattention, or improper installation may cause the warranty to be ineffective immediately. This warranty does not include shipping fees.

Disposal

Always dispose Of the used appliance at a recycling center, DO not dispose of the used appliance together with household waste. Qualcomm aptX is a product Of Qualcomm Technologies, Inc. and/or its subsidiaries.

evatmaster Consulting GmbH Bettinastr 30 60325 Frankfurt am Main, Germany contact@evatmaster.com

Operator: Ankbit International Limited

Address: 45-51 Chatham Road South, Tsim Sha Tsui, Kowloon, Hong Kong

Manufacturer: Shenzhen Ankbit Electronics Limited


Address: Runfeng Industrial Park, No. 4197 Baoan Blvd., Xixiang St., Baoan Dist., Shenzhen, China

FCC ID: 2AJU3RT615 IC: 29252-803

HVIN: 806



Documents / Resources

	<p>1Mii B06 Plus Bluetooth Receiver [pdf] User Manual</p> <p>B06 Plus Bluetooth Receiver, B06 Plus, Bluetooth Receiver, Receiver</p>
---	--

References

- [User Manual](#)