



1Mii B03 Long Range Bluetooth 5.0 Transmitter Receiver User Guide

[Home](#) » [1Mii](#) » 1Mii B03 Long Range Bluetooth 5.0 Transmitter Receiver User Guide

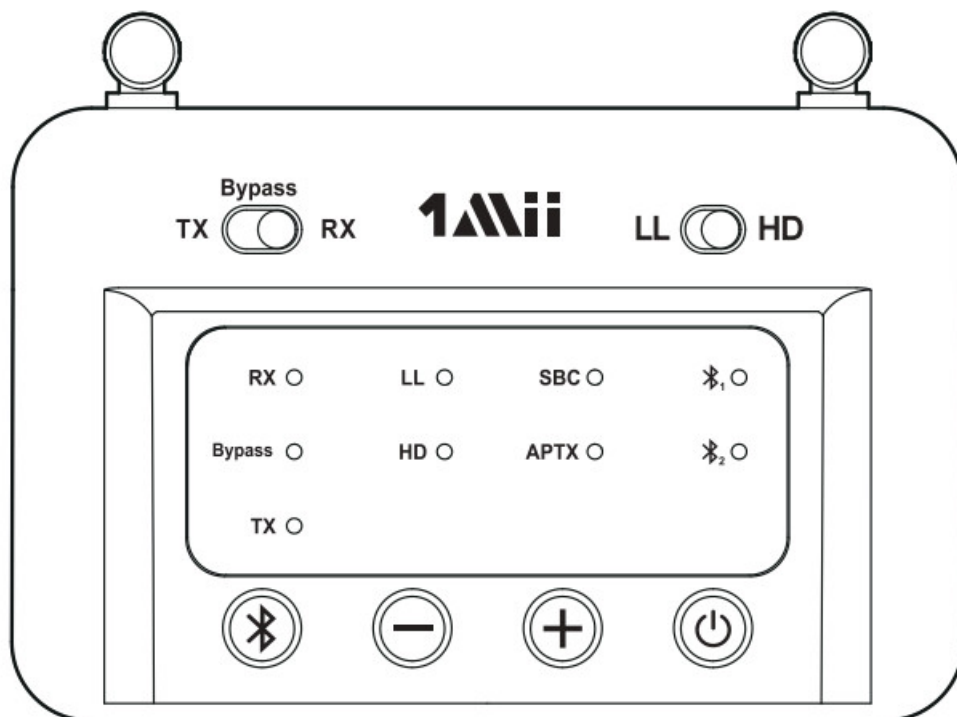


Bring Music to Life
Bluetooth
Transmitter and Receiver 2-in-1
Quick User Guide









Contents [[hide](#)]

- [1 Product Overview & Basic operation](#)
- [2 Basic operation](#)
- [3 Status indicators](#)
- [4 As a Wireless Transmitter\(TX mode\)](#)
- [5 As a Wireless Receiver \(RX mode\)](#)
- [6 Bypass mode \(Non-Bluetooth\)](#)
- [7 Troubleshooting](#)
- [8 Documents / Resources](#)
- [9 Related Posts](#)

Product Overview & Basic operation

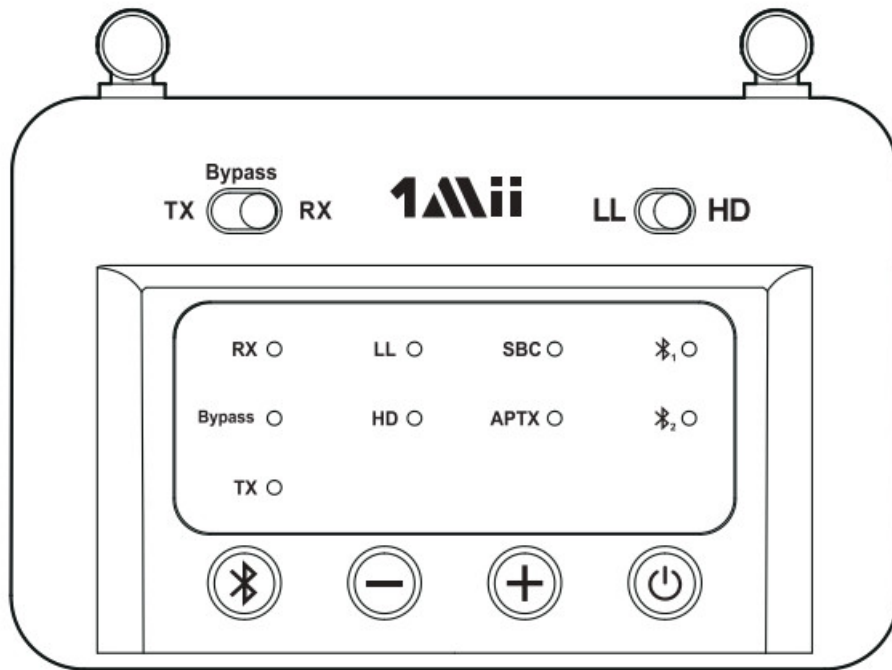


Basic operation

Button	Function	Operation
LL  HD	Low latency mode	Slide to LL to enter low latency mode.
	High definition mode	Slide to HD to enter high definition mode.
Bypass TX  RX	Transmitter mode	Slide to TX to enter transmitting + bypass mode.
	Receiver mode	Slide to RX to enter receiving mode.
	Bypass mode	Slide to Bypass" to enter Bypass mode.
	Enter pairing mode	Hold this button for about 2 seconds.
	Reconnect	Short press once.
	Restored factory default settings	Hold this button for about 10 seconds. All the LED flashes together 2 times
	Volume down/Previous song	In AUX audio mode, short press once (TX mode doesn't support).
	Volume up/Next song	In AUX audio mode, short press once. (TX mode doesn't support).
	Power on Power off	Short press  to power on
		Press and hold  1 second to power off


Qualcomm aptX is a product of Qualcomm Technologies, Inc. and/or its subsidiaries.

Status indicators



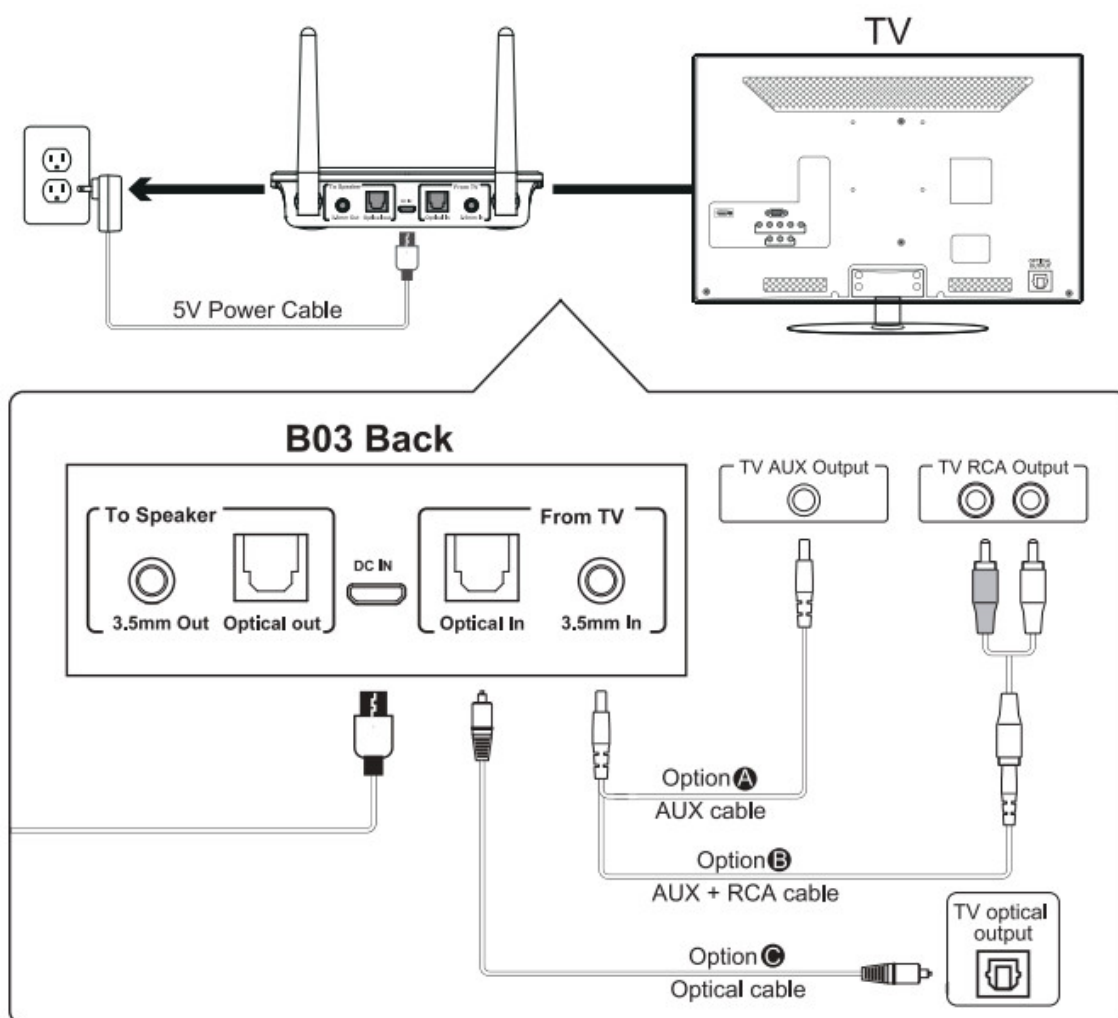
Indicator	Status
RX	In receiving mode
	Flashes Blue and Red alternately to indicate B03 in pairing mode
TX	In transmitting + bypass mode
	Flashes Blue and Red alternately to indicate B03 in pairing mode
Bypass	Bypass mode
LL	Connected with aptX low latency or Fast stream codec
HD	Connected with aptX HD codec
SBC	Connected with SBC codec
APTX	Connected with APTX codec
Bluetooth 1	Device 1 is connected
Bluetooth 2	Device 2 is connected

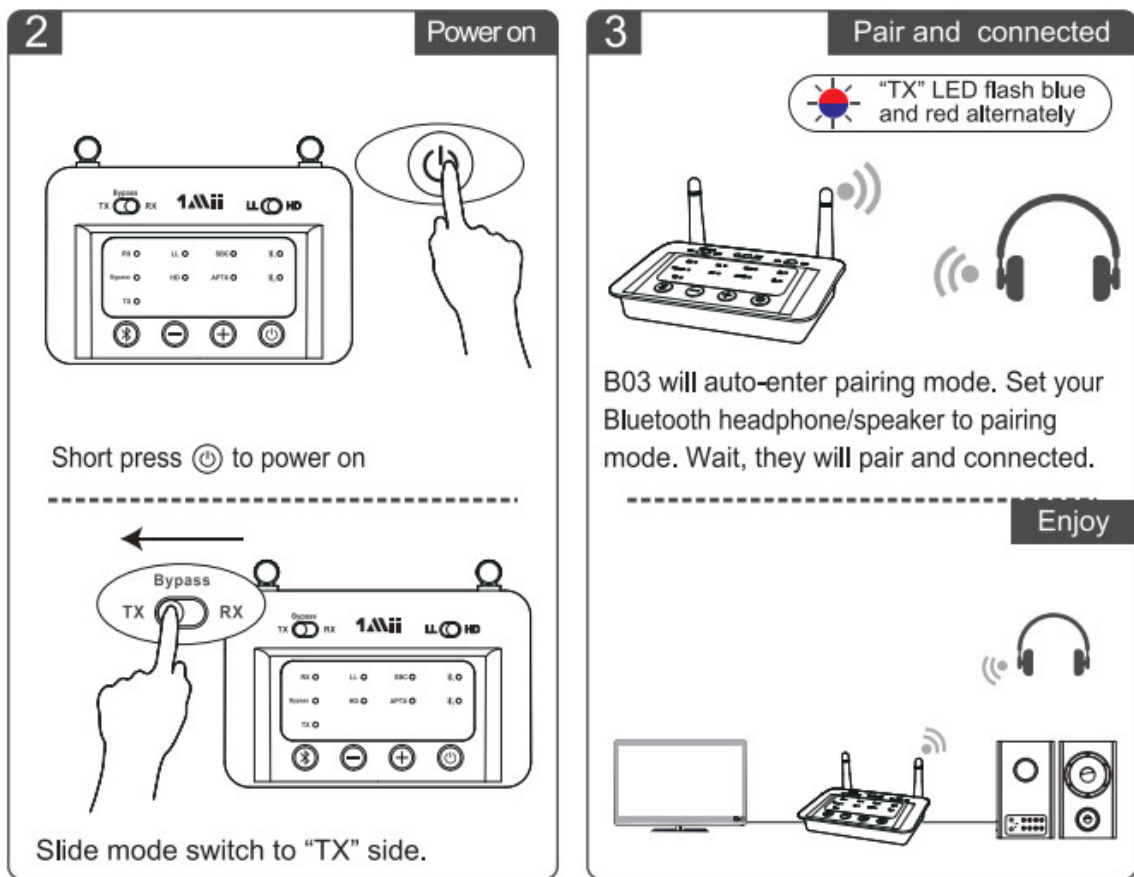
Note If B03 fail to pair, hold  button for 2s to enter pairing mode
Pair with the second device

- Set second headphones/speaker to pairing mode
- Set B03 to pairing mode again, hold the  button for 2s until the TX LED flashes Blue and Red
- Wait until connected

As a Wireless Transmitter(TX mode)

Connect B03 to the power supply & Connect the suitable cable to the TV



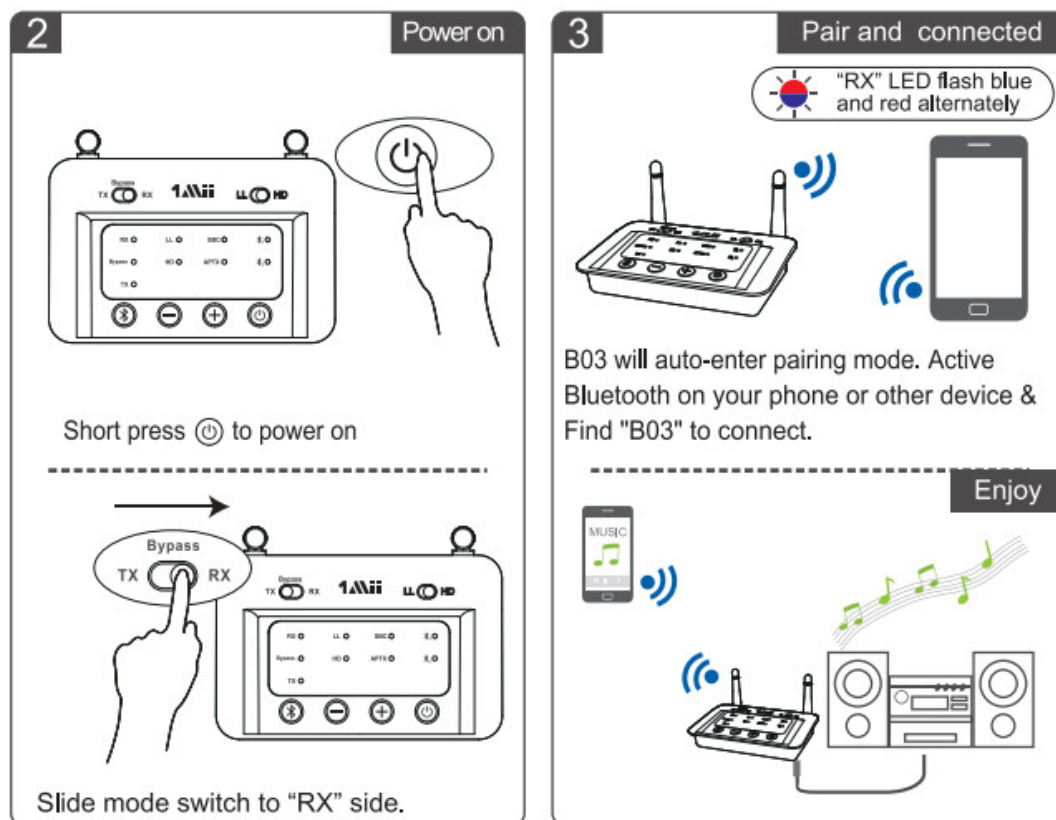
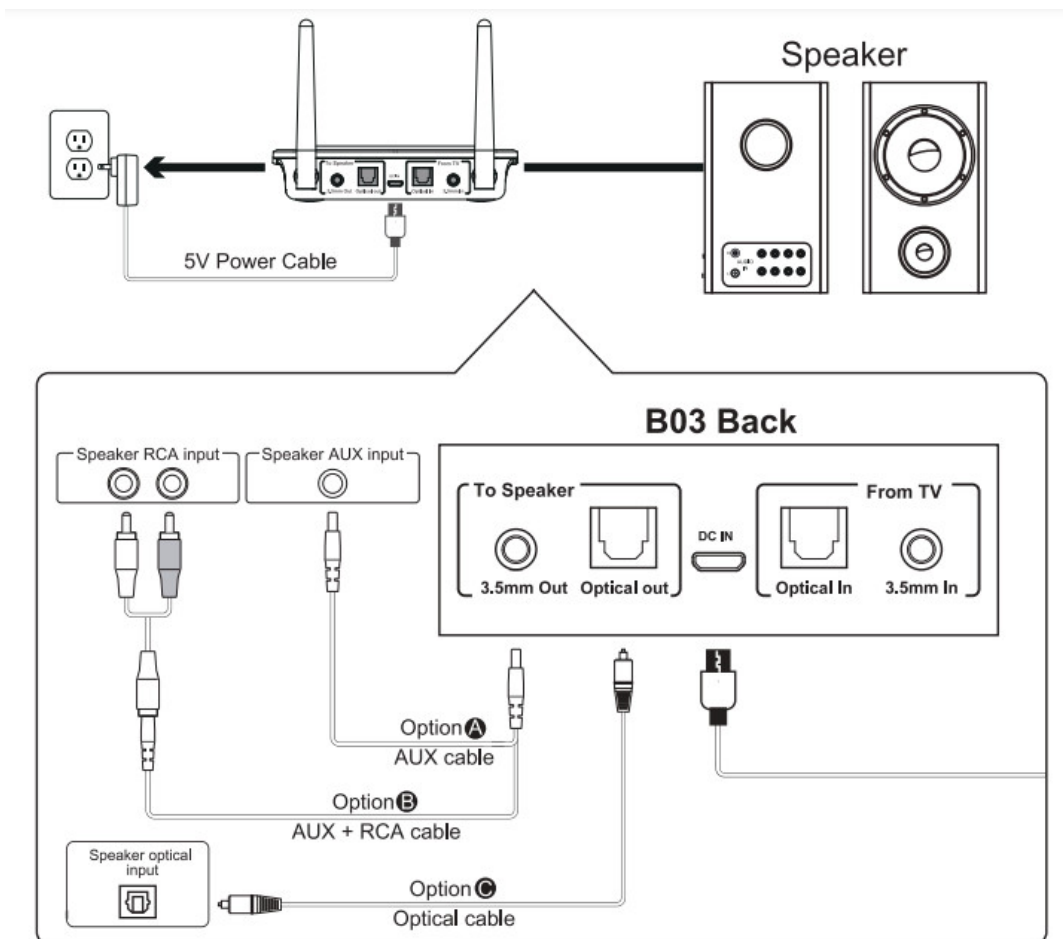


Bluetooth& Wired Simultaneous Support

B03 allows the user the Bluetooth & Wied Simultaneous allows the user to place& connect the B03 in between the TV and the Soundbar (or Sound system) to share the same optical/audio output port on TV while being able to get audio through both devices simultaneously. This allows the headphone user to listen at different volume levels;
NOTE. Bypass can only work with the same type of input/output. AUX input to AUX output Or OPT input to OPT output.

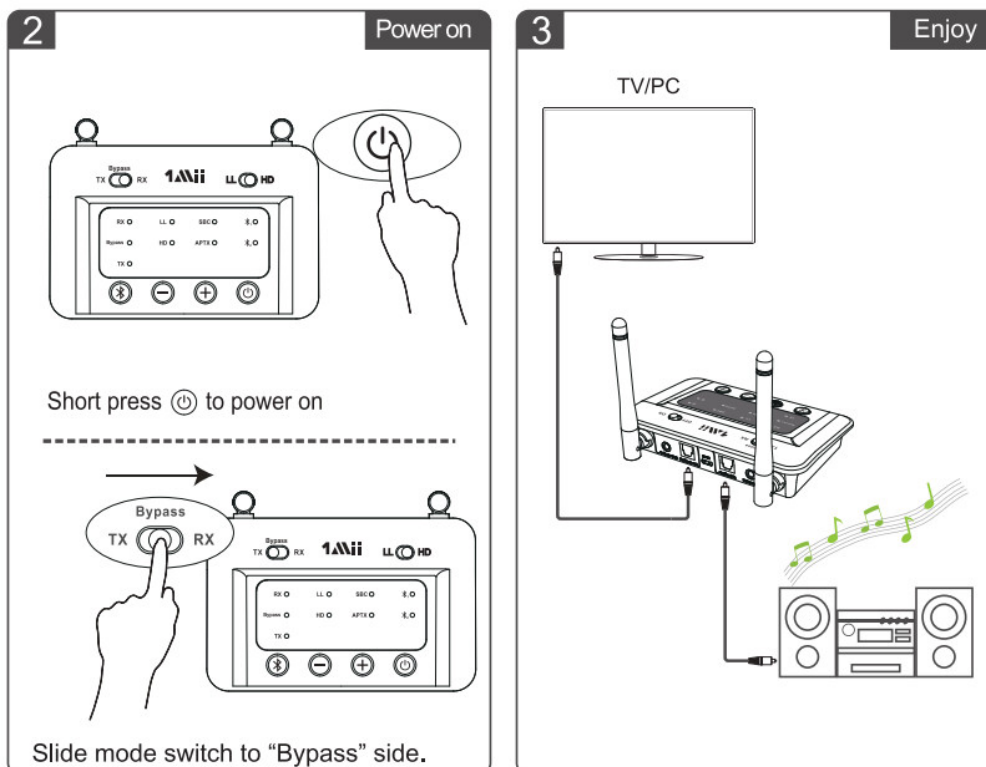
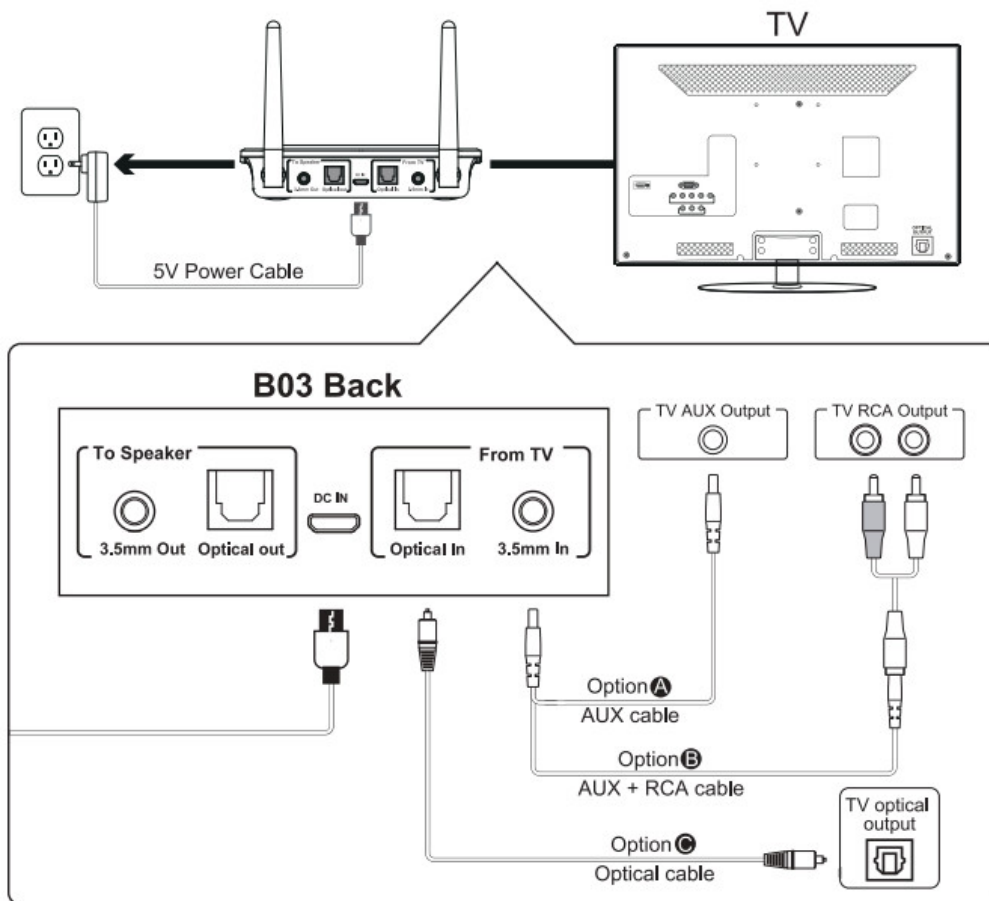
As a Wireless Receiver (RX mode)

connect 803 to the power supply & Connect the suitable cable to the speaker.




Bypass mode (Non-Bluetooth)

Connect B03 Pro to power supply & Connect suitable cable to speaker and TV





Note


1. Bypass mode = Direct cable connection
2. Bypass can only work with the same type of input/output i.e. AUX input to AUX output or OPT input to OPT output

- Afterward: press the  button for 2 seconds to enter
- Set your headsets/speakers to pairing mode refer to its user manual
- Wait and connected

As a Wireless Receiver (RX mode)

1. Connect your speaker to the 803 To Speaker” port with the audio cable provided (optical or AUX/RCA)
2. Connect B03 to a power source with a US8 cable and adapter.
3. Short press  button to power on.
4. Slide Mode switch to the DRY” position.
5. Pair B03 with your Bluetooth-enabled phone/pc/tablet.
 1. B03 pairing mode = RX LED flash blue / red alternately fast
 - First-time use: B03 auto enter pairing mode (with clear memory)
 - Afterward: press  button for 2 seconds to enter
 2. Active Bluetooth on your phone or another device to find “B03 to connect
 3. Wait and connected

Bypass mode (Non-Bluetooth mode)

1. Connect audio source (TV, DVD, etc.) to 1mi B03 From TV port with the audio cables provided (optical or AUX/RCA)
2. Connect your speaker to the B03 To Speaker” port with your own audio cable (optical or AUX/RCA)
3. Connect B03 to a power source with a USB cable and adapter
4. Short press  button to power on.
5. Slide Mode switch to the Bypass” position.
6. Ready for use.

Important Notice:

1. Make sure your (TV output is valid. AUX test with earphones
2. Does NOT support Dolby / DTS under opT
3. Bypass can only work with the same type of input/output i.e. AUX input to AUX output or OPT input to OPT output

Bluetooth & Wired Simultaneous Support

B03 allows the user to use the Bluetooth & Wired Simultaneous, allows the user to place & connect the B03 in between the TV and the Soundbar (or Sound system) to share the same optical/audio output port on TV while being able to get audio through both devices simultaneously. This allows the headphone user to listen at a different volume level

Troubleshooting

1. I am having trouble pairing and connecting to my Bluetooth device

Please check the following

- Your wireless device supports the wireless profiles listed in the specifications
- B3 and your device are next to each other or within 3 feet/ 1 meter
- Make sure both B03 and the wireless device are in pairing mode

2. After connecting and pairing with my wireless device, I cannot hear any music from my sound system In Optical mode, the B03 support device with a sampling rate under 48kHz.

Note: Need to make sure TV audio format is set to PCM(Fig-1) and TV sound out as External Speakers”(Fig-2)

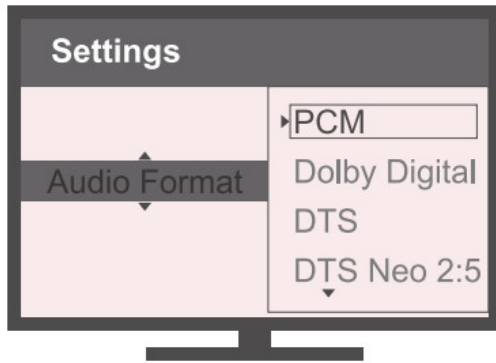


Fig-1 Set your TV Audio Format to “PCM”(IMPORTANT)

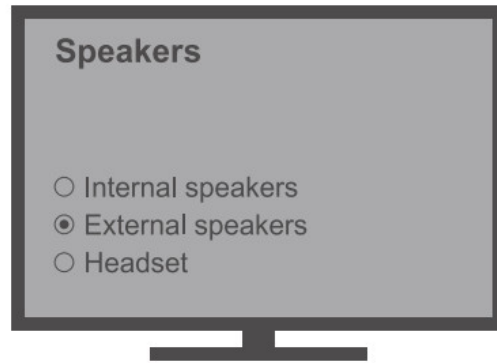


Fig-2 Set your TV Speaker to “External Speaker”

FCC notice

This device complies with Part 15 of the FCC Rules. Operation is subject to the following two conditions:

1. This device may not cause harmful interference, and (2) this device must accept any interference received, including interference that may cause undesired operation

NOTE 1: This equipment has been tested and found to comply with the limits for a Class B digital device, pursuant to part 15 of the FCC Rules. These limits are designed to provide reasonable protection against harmful interference in a residential installation. This equipment generates uses and can radiate radio frequency energy and, if not installed and used in accordance with the instructions, may cause harmful interference to radio communications. However, there is no guarantee that interference will not occur in a particular installation. If this equipment does cause harmful interference to radio or television reception, which can be determined by turning the equipment off and on, the user is encouraged to try to correct the interference by one or more of the following measures:

- Reorient or relocate the receiving antenna
- Increase the separation between the equipment and receiver
- Connect the equipment into an outlet on a circuit different from that to which the receiver is connected
- Consult the dealer or an experienced radio/TV technician for help

NOTE 2: Any changes or modifications to this unit not expressly approved by the party responsible for compliance could void the user's authority to operate the equipment

Any questions? Contact:
support@lmii.com

(Response Time:4-24h,excl holidays)

MANUFACTURER

Shenzhen 1Mii Technology Limited

Address: 4th Fl, Bldg B, Runfeng Industrial Park, No. 4197 Ba0an
Blvd., Gushu Community. Xiang St., Baoan Dist. Shenzhen, China



www.1mii.com

Documents / Resources



[1Mii B03 Long Range Bluetooth 5.0 Transmitter Receiver](#) [pdf] User Guide
B03, Long Range Bluetooth 5.0 Transmitter Receiver